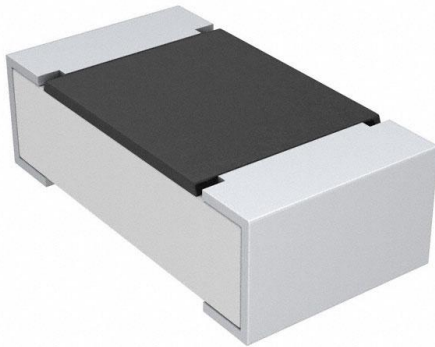


# CRCW060310K0FKTB Datasheet

[www.digi-electronics.com](http://www.digi-electronics.com)



<https://www.DiGi-Electronics.com>

DiGi Electronics Part Number	CRCW060310K0FKTB-DG
Manufacturer	<a href="#">Vishay Dale</a>
Manufacturer Product Number	CRCW060310K0FKTB
Description	RES SMD 10K OHM 1% 1/10W 0603
Detailed Description	10 kOhms $\pm$ 1% 0.1W, 1/10W Chip Resistor 0603 (1608 Metric) Automotive AEC-Q200 Thick Film

This model CRCW060310K0FKTB is available at DiGi Electronics.

DiGi Electronics offers a global database of semiconductor and electronic component datasheets.

We welcome your inquiries regarding pricing, lead time, or other product-related questions.

 [Request a Quote](#)

 [Datasheet Search](#)



Tel: +00 852-30501935

RFQ Email: [Info@DiGi-Electronics.com](mailto:Info@DiGi-Electronics.com)

DiGi is a global authorized distributor of electronic components.

## Purchase and inquiry

Manufacturer Product Number:

CRCW060310K0FKTB

Series:

CRCW

Resistance:

10 kOhms

Power (Watts):

0.1W, 1/10W

Features:

Automotive AEC-Q200

Operating Temperature:

-55°C ~ 155°C

Supplier Device Package:

0603

Size / Dimension:

0.063" L x 0.033" W (1.60mm x 0.85mm)

Number of Terminations:

2

Base Product Number:

CRCW0603

Manufacturer:

Vishay Dale

Product Status:

Discontinued at Digi-Key

Tolerance:

±1%

Composition:

Thick Film

Temperature Coefficient:

±100ppm/°C

Package / Case:

0603 (1608 Metric)

Ratings:

AEC-Q200

Height - Seated (Max):

0.020" (0.50mm)

Failure Rate:

-

## Environmental & Export classification

RoHS Status:

RoHS non-compliant

REACH Status:

REACH Affected

HTSUS:

8533.21.0030

Moisture Sensitivity Level (MSL):

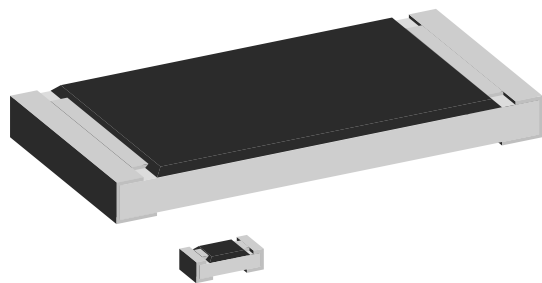
1 (Unlimited)

ECCN:

EAR99



## Lead (Pb)-Bearing Thick Film Chip Resistors



### FEATURES

HALOGEN  
FREE

- Stability at different environmental conditions  
 $\Delta R/R \leq 1\%$  (1000 h rated power at 70 °C)
- AEC-Q200 qualified
- Material categorization: for definitions of compliance please see [www.vishay.com/doc?99912](http://www.vishay.com/doc?99912)

### APPLICATIONS

- Military
- Industrial

### LINKS TO ADDITIONAL RESOURCES



The lead (Pb)-bearing D/CRCW thick film chip resistors series are the perfect choice for most fields of modern electronics where lead (Pb)-bearing terminations are mandatory and high reliability and stability are of major concern.

Typical applications include military and industrial.

TECHNICAL SPECIFICATIONS								
DESCRIPTION	D10/CRCW0402	D11/CRCW0603	D12/CRCW0805	D25/CRCW1206	CRCW1210	CRCW1218	CRCW2010	CRCW2512
Imperial size	0402	0603	0805	1206	1210	1218	2010	2512
Metric size code	RR1005M	RR1608M	RR2012M	RR3216M	RR3225M	RR3246M	RR5025M	RR6332M
Resistance range	1 Ω to 10 MΩ; jumper (0 Ω)					1 Ω to 2.2 MΩ; jumper (0 Ω)	1 Ω to 10 MΩ; jumper (0 Ω)	
Resistance tolerance	± 5 %; ± 1 %							
Temperature coefficient	± 200 ppm/K; ± 100 ppm/K							
Rated dissipation, $P_{70}$ <sup>(1)</sup>	0.063 W	0.10 W	0.125 W	0.25 W	0.5 W	1.0 W	0.75 W	1.0 W
Operating voltage, $U_{max, AC_{RMS}/DC}$	50 V	75 V	150 V	200 V	200 V	200 V	400 V	500 V
Permissible film temperature, $\vartheta_{F max.}$ <sup>(1)</sup>	155 °C							
Operating temperature range	-55 °C to +155 °C							
Max. resistance change at $P_{70}$ for resistance range, $ \Delta R/R $ , after <sup>(2)</sup> :								
1000 h	≤ 1 %							
8000 h	≤ 2 %							
Permissible voltage against ambient (insulation):								
1 min, $U_{ins}$	75 V	100 V	200 V	300 V	300 V	300 V	300 V	300 V
Failure rate: FIT <sub>observed</sub>	≤ 0.1 × 10 <sup>-9</sup> /h							

#### Notes

<sup>(1)</sup> Please refer to "Application Information" below

<sup>(2)</sup> Apply to components with stability class 1



## APPLICATION INFORMATION

When the resistor dissipates power, a temperature rise above the ambient temperature occurs, dependent on the thermal resistance of the assembled resistor together with the printed circuit board. The rated dissipation applies only if the permitted film temperature is not exceeded.

These resistors do not feature a limited lifetime when operated within the permissible limits. However, resistance value drift increasing over operating time may result in exceeding a limit acceptable to the specific application, thereby establishing a functional lifetime.

TEMPERATURE COEFFICIENT AND RESISTANCE RANGE				
TYPE / SIZE	TCR	TOLERANCE	RESISTANCE	E-SERIES
D10/CRCW0402	± 200 ppm/K	± 5 %	1 Ω to 10 MΩ	E24
	± 100 ppm/K	± 1 %	1 Ω to 10 MΩ	E24; E96
	Jumper, $I_{max.} = 1.5$ A	≤ 20 mΩ	0 Ω	-
D11/CRCW0603	± 200 ppm/K	± 5 %	1 Ω to 10 MΩ	E24
	± 100 ppm/K	± 1 %	1 Ω to 10 MΩ	E24; E96
	Jumper, $I_{max.} = 2.0$ A	≤ 20 mΩ	0 Ω	-
D12/CRCW0805	± 200 ppm/K	± 5 %	1 Ω to 10 MΩ	E24
	± 100 ppm/K	± 1 %	1 Ω to 10 MΩ	E24; E96
	Jumper, $I_{max.} = 2.5$ A	≤ 20 mΩ	0 Ω	-
D25/CRCW1206	± 200 ppm/K	± 5 %	1 Ω to 10 MΩ	E24
	± 100 ppm/K	± 1 %	1 Ω to 10 MΩ	E24; E96
	Jumper, $I_{max.} = 3.5$ A	≤ 20 mΩ	0 Ω	-
CRCW1210	± 200 ppm/K	± 5 %	1 Ω to 10 MΩ	E24
	± 100 ppm/K	± 1 %	1 Ω to 10 MΩ	E24; E96
	Jumper, $I_{max.} = 5.0$ A	≤ 20 mΩ	0 Ω	-
CRCW1218	± 200 ppm/K	± 5 %	1 Ω to 2.2 MΩ	E24
	± 100 ppm/K	± 1 %	1 Ω to 2.2 MΩ	E24; E96
	Jumper, $I_{max.} = 7.0$ A	≤ 20 mΩ	0 Ω	-
CRCW2010	± 200 ppm/K	± 5 %	1 Ω to 10 MΩ	E24
	± 100 ppm/K	± 1 %	1 Ω to 10 MΩ	E24; E96
	Jumper, $I_{max.} = 6.0$ A	≤ 20 mΩ	0 Ω	-
CRCW2512	± 200 ppm/K	± 5 %	1 Ω to 10 MΩ	E24
	± 100 ppm/K	± 1 %	1 Ω to 10 MΩ	E24; E96
	Jumper, $I_{max.} = 7.0$ A	≤ 20 mΩ	0 Ω	-

### Note

- The temperature coefficient of resistance (TCR) is not specified for 0 Ω jumpers



PACKAGING						
TYPE / SIZE	CODE	QUANTITY	PACKAGING STYLE	WIDTH	PITCH	PACKAGING DIMENSIONS
D10/CRCW0402	TD = RT7	10 000	Paper tape acc. to IEC 60286-3, Type 1a	8 mm	2 mm	Ø 180 mm / 7"
	TE = RF4	50 000				Ø 330 mm / 13"
D11/CRCW0603	TA = RT1	5000		8 mm	4 mm	Ø 180 mm / 7"
	TC = RT6	20 000				Ø 330 mm / 13"
D12/CRCW0805	TA = RT1	5000		8 mm	4 mm	Ø 180 mm / 7"
	TC = RT6	20 000				Ø 330 mm / 13"
D25/CRCW1206	TA = RT1	5000	8 mm	4 mm	Ø 180 mm / 7"	
	TC = RT6	20 000			Ø 330 mm / 13"	
CRCW1210	TA = RT1	5000	12 mm	4 mm	Ø 180 mm / 7"	
CRCW1218	TC = RT6	20 000			Ø 330 mm / 13"	
CRCW1218	TK = RT9	4000	Blister tape acc. to IEC 60286-3, Type 2a	12 mm	4 mm	Ø 180 mm / 7"
CRCW2010	TF = R02	4000				Ø 180 mm / 7"
CRCW2512	TG = R67	2000				8 mm
	TH = R82	4000	Ø 180 mm / 7"			

PART NUMBER AND PRODUCT DESCRIPTION																	
Part Number: CRCW0805562RFKTA																	
Part Number: CRCW08050000ZSTA																	
C	R	C	W	0	8	0	5	5	6	2	R	F	K	T	A		
TYPE / SIZE		RESISTANCE			TOLERANCE			TCR		PACKAGING			SPECIAL				
CRCW0402 CRCW0603 CRCW0805 CRCW1206 CRCW1210 CRCW1218 CRCW2010 CRCW2512		R = decimal K = thousand M = million 0000 = jumper			F = ± 1 % J = ± 5 % Z = jumper			K = ± 100 ppm/K N = ± 200 ppm/K S = jumper		TA, TC, TD, TE, TF, TG, TH, TK			Up to 2 digits				
Product Description: D12/CRCW0805 100 562R 1 % RT1																	
Product Description: D12/CRCW0805 0R0 RT1																	
D12/CRCW0805		100			562R			1 %			RT1						
TYPE / SIZE		TCR			RESISTANCE			TOLERANCE			PACKAGING						
D10/CRCW0402 D11/CRCW0603 D12/CRCW0805 D25/CRCW1206 CRCW1210 CRCW1218 CRCW2010 CRCW2512		± 100 ppm/K ± 200 ppm/K			10R = 10 Ω 562R = 562 Ω 10K = 10 kΩ 1M = 1 MΩ 0R0 = jumper			± 1 % ± 5 %			RT1, RT6, RT7, RF4, R02, R67, R82, RT9						



## DESCRIPTION

Production is strictly controlled and follows an extensive set of instructions established for reproducibility. A cermet film layer and a glass-over are deposited on a high grade ( $Al_2O_3$ ) ceramic substrate with its prepared inner contacts. A special laser is used to achieve the target value by smoothly fine trimming the resistive layer without damaging the ceramics. The resistor elements are covered by a protective coating designed for electrical, mechanical and climatic protection. The terminations receive a SnPb layer on nickel plating.

The result of the determined production is verified by an extensive testing procedure on 100 % of the individual chip resistors. Only accepted products are laid directly into the tape in accordance with **IEC 60286-3 Type 1a and Type 2a** <sup>(1)</sup>.

## ASSEMBLY

The resistors are suitable for processing on automatic SMD assembly systems. They are suitable for automatic soldering using wave, reflow or vapor phase as shown in **IEC 61760-1** <sup>(1)</sup>. The encapsulation is resistant to all cleaning solvents commonly used in the electronics industry, including alcohols, esters and aqueous solutions. The suitability of conformal coatings, potting compounds and their processes, if applied, shall be qualified by appropriate means to ensure the long-term stability of the whole system.

The resistors with SnPb plating provides compatibility with lead (Pb)-free and lead (Pb)-containing soldering processes. Solderability is specified for 2 years after production or requalification. The permitted storage time is 20 years. The immunity of the plating against tin whisker growth has been proven under extensive testing.

## MATERIALS

Vishay acknowledges the following systems for the regulation of hazardous substances:

- IEC 62474, Material Declaration for Products of and for the Electrotechnical Industry, with the list of declarable substances given therein <sup>(2)</sup>
- The Global Automotive Declarable Substance List (GADSL) <sup>(3)</sup>
- The REACH regulation (1907/2006/EC) and the related list of substances with very high concern (SVHC) <sup>(4)</sup> for its supply chain

Except for the intentionally added lead (Pb) in the termination finish, the products do not contain any of the banned substances as per IEC 62474, GADSL, or the SVHC list, see [www.vishay.com/how/leadfree](http://www.vishay.com/how/leadfree).

Vishay pursues the elimination of conflict minerals from its supply chain, see the Conflict Minerals Policy at [www.vishay.com/doc?49037](http://www.vishay.com/doc?49037).

## APPROVALS

The resistors are qualified according to AEC-Q200.

Where applicable, the resistors are tested in accordance with **EN 140401-802** which refers to **EN 60115-1**, **EN 60115-8** and the variety of environmental test procedures of the **IEC 60068** <sup>(1)</sup> series.

## RELATED PRODUCTS

The D/CRCW e3 with lead (Pb)-free termination plating is designed for applications where lead (Pb)-free terminations are mandatory. For ordering D/CRCW with lead (Pb)-free terminations please refer to latest edition of datasheet D/CRCW e3 ([www.vishay.com/doc?20035](http://www.vishay.com/doc?20035)).

For more information about products with better TCR and tighter tolerance please refer to the "Lead (Pb)-Bearing Thick Film, Rectangular, Semi-Precision Chip Resistors" datasheet ([www.vishay.com/doc?20009](http://www.vishay.com/doc?20009)).

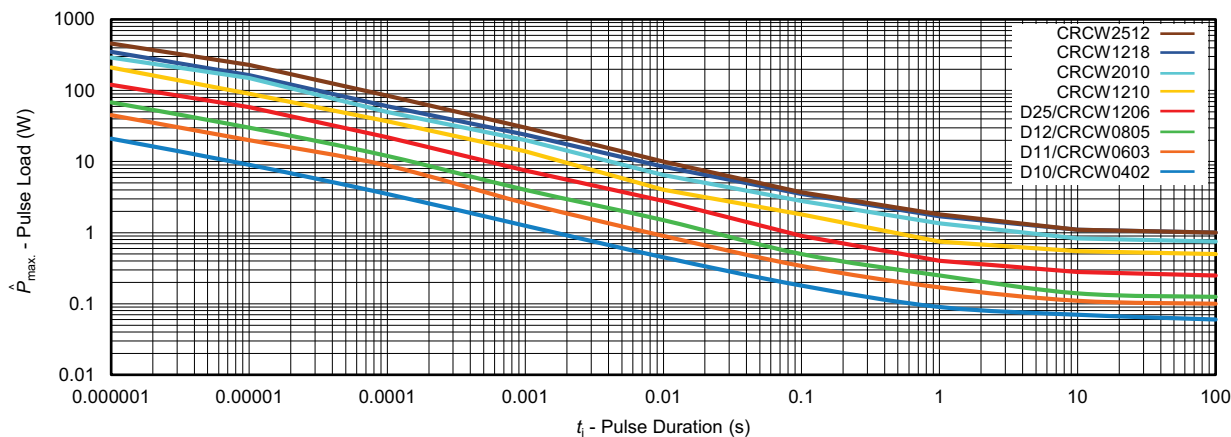
## Notes

- <sup>(1)</sup> The quoted IEC standards are also released as EN standards with the same number and identical contents
- <sup>(2)</sup> The IEC 62474 list of declarable substances is maintained in a dedicated database, which is available at <http://std.iec.ch/iec62474>
- <sup>(3)</sup> The Global Automotive Declarable Substance List (GADSL) is maintained by the American Chemistry Council and available at [www.gadsl.org](http://www.gadsl.org)
- <sup>(4)</sup> The SVHC list is maintained by the European Chemical Agency (ECHA) and available at <http://echa.europa.eu/candidate-list-table>



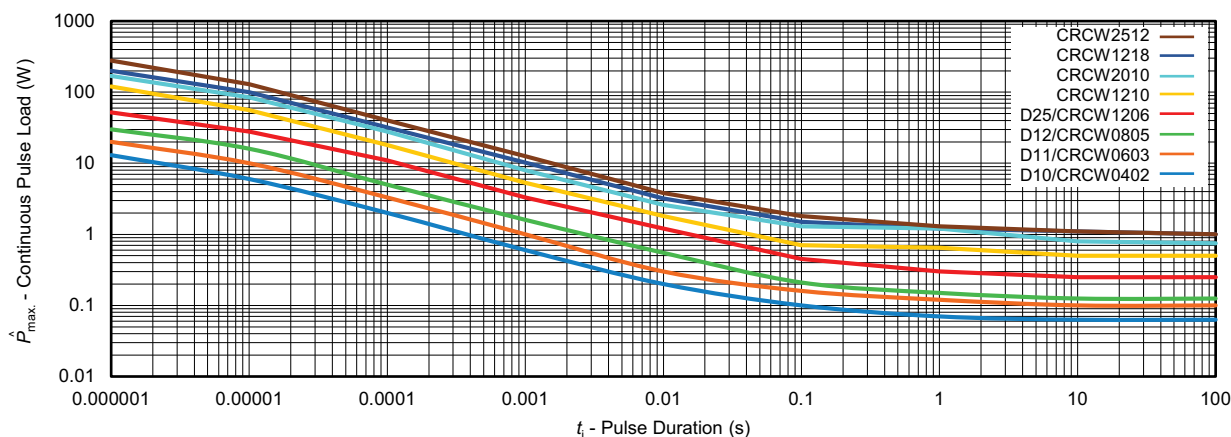
**FUNCTIONAL PERFORMANCE**

**Single Pulse**



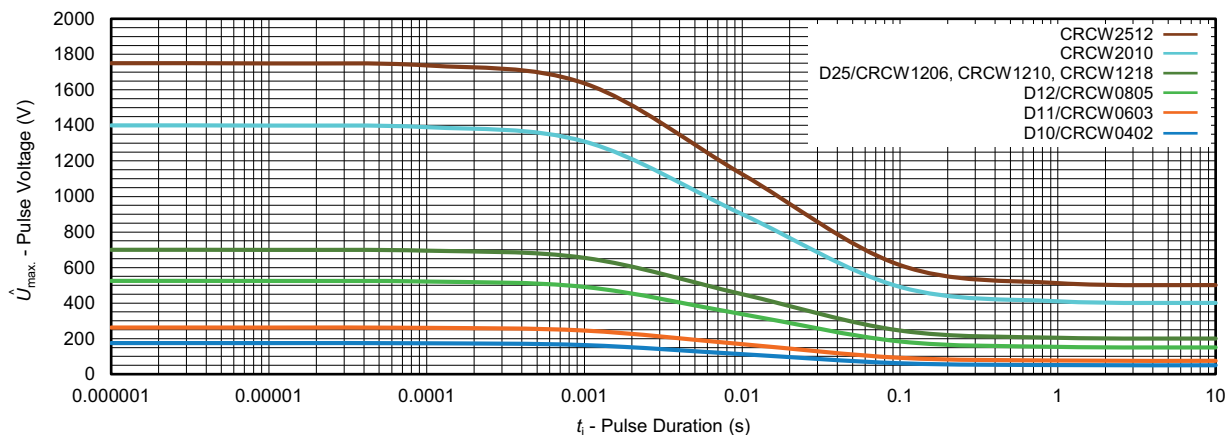
Maximum pulse load, single pulse; applicable if  $\bar{P} \rightarrow 0$  and  $n < 1000$  and  $\hat{U} = \hat{U}_{max.}$ ; for permissible resistance change equivalent to 8000 h operation

**Continuous Pulse**



Maximum pulse load, continuous pulses; applicable if  $\bar{P} \leq P(v_{amb})$  and  $\hat{U} = \hat{U}_{max.}$ ; for permissible resistance change equivalent to 8000 h operation

**Pulse Voltage**



Maximum pulse voltage, single and continuous pulses; applicable if  $\hat{P} = \hat{P}_{max.}$ ; for permissible resistance change equivalent to 8000 h operation



**Derating**



**Non-Linearity**



**Current Noise**





## TESTS AND REQUIREMENTS

All executed tests are carried out in accordance with the following specifications:

EN 60115-1, generic specification

EN 60115-8, sectional specification

EN 140401-802, detail specification

IEC 60068-2-xx, test methods

The parameters stated in the Test Procedures and Requirements table are based on the required tests and permitted limits of EN 140401-802. The table presents only the most important tests, for the full test schedule refer to the documents listed above. However, some additional tests and a number of improvements against those minimum requirements have been included.

The testing also covers most of the requirements specified by EIA/IS-703 and JIS-C-5201-1.

The tests are carried out under standard atmospheric conditions in accordance with IEC 60068-1, 4.3, whereupon the following values are applied:

Temperature: 15 °C to 35 °C

Relative humidity: 25 % to 75 %

Air pressure: 86 kPa to 106 kPa (860 mbar to 1060 mbar).

A climatic category LCT / UCT / 56 is applied, defined by the lower category temperature (LCT), the upper category temperature (UCT), and the duration of exposure in the damp heat, steady state test (56 days). The components are mounted for testing on boards in accordance with EN 60115-8, 2.4.2 unless otherwise specified.

TEST PROCEDURES AND REQUIREMENTS					
EN 60115-1 CLAUSE	IEC 60068-2 (1) TEST METHOD	TEST	PROCEDURE	REQUIREMENTS PERMISSIBLE CHANGE ( $\Delta R$ )	
				STABILITY CLASS 1 OR BETTER	STABILITY CLASS 2 OR BETTER
				1 $\Omega$ to 10 M $\Omega$	
			Stability for product types: <b>D/CRCW</b>		
6.1	-	Measurements of resistance and tolerance	-	$\pm 1 \%$	$\pm 5 \%$
6.2	-	Temperature coefficient of resistance	At (20 / -55 / 20) °C and (20 / 155 / 20) °C	$\pm 100$ ppm/K	$\pm 200$ ppm/K
7.1	-	Endurance at rated temperature 70 °C	$U = \sqrt{P_{70} \times R} \leq U_{max.}$ 1.5 h on; 0.5 h off 70 °C; 1000 h 70 °C; 8000 h	$\pm (1 \% R + 0.05 \Omega)$ $\pm (2 \% R + 0.1 \Omega)$	$\pm (2 \% R + 0.1 \Omega)$ $\pm (4 \% R + 0.1 \Omega)$
7.3	-	Endurance at maximum temperature	155 °C; 1000 h	$\pm (1 \% R + 0.05 \Omega)$	$\pm (2 \% R + 0.1 \Omega)$
10.4	78 (Cab)	Damp heat, steady state	(40 $\pm$ 2) °C; 56 days; (93 $\pm$ 3) % RH	$\pm (1 \% R + 0.05 \Omega)$	
10.5	67 (Cy)	Damp heat, steady state, accelerated	(85 $\pm$ 2) °C; (85 $\pm$ 5) % RH; $U = \sqrt{0.1 \times P_{85} \times R} \leq 100$ V; 1000 h	$\pm (1 \% R + 0.05 \Omega)$	$\pm (2 \% R + 0.1 \Omega)$
10.3	-	Climatic sequence:			
10.3.4.2	2 (Ba)	Dry heat	125 °C; 16 h		
10.3.4.3	30 (Db)	Damp heat, cyclic	55 °C; 24 h; $\geq 90$ % RH; 1 cycle		
10.3.4.4	1 (Ab)	Cold	-55 °C; 2 h		
10.3.4.5	13 (M)	Low air pressure	8.5 kPa; 2 h; (25 $\pm$ 10) °C		
10.3.4.6	30 (Db)	Damp heat, cyclic	55 °C; 5 days; > 90 % RH; 5 cycles	$\pm (1 \% R + 0.05 \Omega)$	$\pm (2 \% R + 0.1 \Omega)$
10.3.4.7	-	DC load	$U = \sqrt{P_{70} \times R} \leq U_{max.}$ ; 1 min		
-	1 (Aa)	Cold	-55 °C; 2 h	$\pm (0.25 \% R + 0.05 \Omega)$	$\pm (0.5 \% R + 0.05 \Omega)$
10.1	14 (Na)	Rapid change of temperature	30 min. at -55 °C and 30 min. at 125 °C 1000 cycles	$\pm (1 \% R + 0.05 \Omega)$ no visible damage	
8.1	-	Short-term overload	$U = 2.5 \times \sqrt{P_{70} \times R} \leq 2 \times U_{max.}$ ; whichever is the less severe; 5 s	$\pm (2 \% R + 0.05 \Omega)$	
8.2	-	Single pulse high voltage overload	Severity no. 4: $U = 10 \times \sqrt{P_{70} \times R}$ or $U \leq 2 \times U_{max.}$ ; whichever is the less severe; 10 pulses 10 $\mu$ s / 700 $\mu$ s	$\pm (1 \% R + 0.05 \Omega)$ no visible damage	



TEST PROCEDURES AND REQUIREMENTS					
EN 60115-1 CLAUSE	IEC 60068-2 (1) TEST METHOD	TEST	PROCEDURE	REQUIREMENTS PERMISSIBLE CHANGE ( $\Delta R$ )	
				STABILITY CLASS 1 OR BETTER	STABILITY CLASS 2 OR BETTER
				1 $\Omega$ to 10 M $\Omega$	
8.4	-	Periodic electric overload	$U = \sqrt{15 \times P_{70} \times R}$ or $\leq 2 \times U_{max.}$ ; whichever is the less severe; 0.1 s on; 2.5 s off; 1000 cycles	$\pm (1 \% R + 0.05 \Omega)$ no visible damage	
8.5	-	Electrostatic discharge (human body model)	IEC 61340-3-1 (1); 3 positive + 3 negative discharges; ESD voltage acc. to size	$\pm (1 \% R + 0.05 \Omega)$	
9.11	6 (Fc)	Vibration	Endurance by sweeping; 10 Hz to 2000 Hz; no resonance; amplitude $\leq 1.5$ mm or $\leq 200$ m/s <sup>2</sup> ; 7.5 h	$\pm (0.25 \% R + 0.05 \Omega)$ no visible damage	$\pm (0.5 \% R + 0.05 \Omega)$ no visible damage
11.1	58 (Td)	Solderability	Solder bath method, Sn60Pb40; non-activated flux (235 $\pm$ 5) °C; (2 $\pm$ 0.2) s Solder bath method, Sn96.5Ag3Cu0.5 or Sn99.3Cu0.7 non-activated flux (245 $\pm$ 5) °C; (3 $\pm$ 0.3) s	Good tinning ( $\geq 95$ % covered); no visible damage	
11.2	58 (Td)	Resistance to soldering heat	Soldering bath method; (260 $\pm$ 5) °C; (10 $\pm$ 1) s	$\pm (0.25 \% R + 0.05 \Omega)$	$\pm (0.5 \% R + 0.05 \Omega)$
11.3	45 (XA)	Component solvent resistance	Isopropyl alcohol; +50 °C; method 2	No visible damage	
9.7	21 (Ue <sub>3</sub> )	Shear (adhesion)	D11/CRCW0603 and smaller: 9 N D12/CRCW0805 to CRCW2512: 45 N	No visible damage	
9.8	21 (Uu <sub>1</sub> )	Substrate bending	Depth 2 mm; 3 times	$\pm (0.25 \% R + 0.05 \Omega)$ no visible damage, no open circuit in bent position	
12.2	-	Voltage proof	$U = 1.4 \times U_{ins.}$ ; 60 s	No flashover or breakdown	
12.4	-	Flammability, needle flame test	IEC 60695-11-5 (1); 10 s	No burning after 30 s	

**Note**

(1) The quoted IEC standards are also released as EN standards with the same number and identical contents



## DIMENSIONS



DIMENSIONS AND MASS						
TYPE / SIZE	L (mm)	W (mm)	H (mm)	T1 (mm)	T2 (mm)	MASS (mg)
D10/CRCW0402	1.0 ± 0.05	0.5 ± 0.05	0.35 ± 0.05	0.25 ± 0.10	0.2 ± 0.10	0.65
D11/CRCW0603	1.55 + 0.10 / - 0.05	0.85 ± 0.10	0.45 ± 0.05	0.3 ± 0.20	0.3 ± 0.20	2
D12/CRCW0805	2.0 + 0.20 / - 0.10	1.25 ± 0.15	0.5 ± 0.10	0.3 + 0.20 / - 0.10	0.3 ± 0.20	5.5
D25/CRCW1206	3.2 + 0.10 / - 0.20	1.6 ± 0.15	0.55 ± 0.05	0.45 ± 0.20	0.4 ± 0.20	10
CRCW1210	3.2 ± 0.20	2.5 ± 0.20	0.55 ± 0.05	0.45 ± 0.20	0.4 ± 0.20	16
CRCW1218	3.2 + 0.10 / - 0.20	4.6 ± 0.15	0.55 ± 0.05	0.45 ± 0.20	0.4 ± 0.20	29.5
CRCW2010	5.0 ± 0.15	2.5 ± 0.15	0.6 ± 0.10	0.6 ± 0.20	0.6 ± 0.20	25.5
CRCW2512	6.3 ± 0.20	3.15 ± 0.15	0.6 ± 0.10	0.6 ± 0.20	0.6 ± 0.20	40.5

## SOLDER PAD DIMENSIONS



RECOMMENDED SOLDER PAD DIMENSIONS								
TYPE / SIZE	WAVE SOLDERING				REFLOW SOLDERING			
	G (mm)	Y (mm)	X (mm)	Z (mm)	G (mm)	Y (mm)	X (mm)	Z (mm)
D10/CRCW0402	-	-	-	-	0.45	0.60	0.60	1.65
D11/CRCW0603	0.65	1.10	1.25	2.85	0.75	0.75	1.00	2.25
D12/CRCW0805	0.90	1.30	1.60	3.50	1.00	0.95	1.45	2.90
D25/CRCW1206	1.40	1.40	1.95	4.20	1.50	1.05	1.80	3.60
CRCW1210	1.80	1.45	2.95	4.70	1.70	1.10	2.80	3.90
CRCW1218	1.80	1.30	5.10	4.40	1.90	1.10	4.90	4.10
CRCW2010	3.40	1.65	2.85	6.70	3.50	1.45	2.80	6.40
CRCW2512	4.60	1.60	3.65	7.80	4.75	1.45	3.50	7.65

### Note

- The rated dissipation applies only if the permitted film temperature is not exceeded. Furthermore, a high level of ambient temperature or of power dissipation may raise the temperature of the solder joint, hence special solder alloys or board materials may be required to maintain the reliability of the assembly.

The given solder pad dimensions reflect the considerations for board design and assembly as outlined e.g. in standards IEC 61188-5-x or in publication IPC-7351. They do not guarantee any supposed thermal properties, particularly as these are also strongly influenced by many other parameters. Still, the given solder pad dimensions will be found adequate for most general applications



## Disclaimer

ALL PRODUCT, PRODUCT SPECIFICATIONS AND DATA ARE SUBJECT TO CHANGE WITHOUT NOTICE TO IMPROVE RELIABILITY, FUNCTION OR DESIGN OR OTHERWISE.

Vishay Intertechnology, Inc., its affiliates, agents, and employees, and all persons acting on its or their behalf (collectively, "Vishay"), disclaim any and all liability for any errors, inaccuracies or incompleteness contained in any datasheet or in any other disclosure relating to any product.

Vishay makes no warranty, representation or guarantee regarding the suitability of the products for any particular purpose or the continuing production of any product. To the maximum extent permitted by applicable law, Vishay disclaims (i) any and all liability arising out of the application or use of any product, (ii) any and all liability, including without limitation special, consequential or incidental damages, and (iii) any and all implied warranties, including warranties of fitness for particular purpose, non-infringement and merchantability.

Statements regarding the suitability of products for certain types of applications are based on Vishay's knowledge of typical requirements that are often placed on Vishay products in generic applications. Such statements are not binding statements about the suitability of products for a particular application. It is the customer's responsibility to validate that a particular product with the properties described in the product specification is suitable for use in a particular application. Parameters provided in datasheets and / or specifications may vary in different applications and performance may vary over time. All operating parameters, including typical parameters, must be validated for each customer application by the customer's technical experts. Product specifications do not expand or otherwise modify Vishay's terms and conditions of purchase, including but not limited to the warranty expressed therein.

Hyperlinks included in this datasheet may direct users to third-party websites. These links are provided as a convenience and for informational purposes only. Inclusion of these hyperlinks does not constitute an endorsement or an approval by Vishay of any of the products, services or opinions of the corporation, organization or individual associated with the third-party website. Vishay disclaims any and all liability and bears no responsibility for the accuracy, legality or content of the third-party website or for that of subsequent links.

Vishay products are not designed for use in life-saving or life-sustaining applications or any application in which the failure of the Vishay product could result in personal injury or death unless specifically qualified in writing by Vishay. Customers using or selling Vishay products not expressly indicated for use in such applications do so at their own risk. Please contact authorized Vishay personnel to obtain written terms and conditions regarding products designed for such applications.

No license, express or implied, by estoppel or otherwise, to any intellectual property rights is granted by this document or by any conduct of Vishay. Product names and markings noted herein may be trademarks of their respective owners.

## OUR CERTIFICATE

DiGi provide top-quality products and perfect service for customer worldwide through standardization, technological innovation and continuous improvement. DiGi through third-party certification, we stricly control the quality of products and services. Welcome your RFQ to

Email: [Info@DiGi-Electronics.com](mailto:Info@DiGi-Electronics.com)



Tel: +00 852-30501935

RFQ Email: [Info@DiGi-Electronics.com](mailto:Info@DiGi-Electronics.com)

DiGi is a global authorized distributor of electronic components.