

IHB4EB330K Datasheet



The DNA of tech.®

| | |
|------------------------------|---|
| DiGi Electronics Part Number | IHB4EB330K-DG |
| Manufacturer | Vishay Dale |
| Manufacturer Product Number | IHB4EB330K |
| Description | FIXED IND 33UH 14.4A 11 MOHM TH |
| Detailed Description | 33 μ H Unshielded Wirewound Inductor 14.4 A 11m Ohm Max Radial, Vertical Cylinder |

<https://www.DiGi-Electronics.com>



Tel: +00 852-30501935

RFQ Email: Info@DiGi-Electronics.com

DiGi is a global authorized distributor of electronic components.



Purchase and inquiry

Manufacturer Product Number:

IHB4EB330K

Series:

IHB

Manufacturer:

Vishay Dale



Filter Inductors, High Current, Radial Leaded



ELECTRICAL SPECIFICATIONS

Inductance: Measured at 1.0 V with zero DC current

Dielectric: 2500 V_{RMS} between winding and 0.250" [6.35 mm] of insulating covering edge (with optional insulating covering)

Current Rating: Maximum continuous operating current based on a + 50 °C temperature rise

Operating Temperature: - 55 °C to + 130 °C (no load),
- 55 °C to + 80 °C (at full rated current)

FEATURES

- Printed circuit mounting
- Wide range of inductance and current ratings
- Pre-tinned leads
- Optional polyolefin tubing and printing available at additional cost
- Material categorization: For definitions of compliance please see www.vishay.com/doc?99912



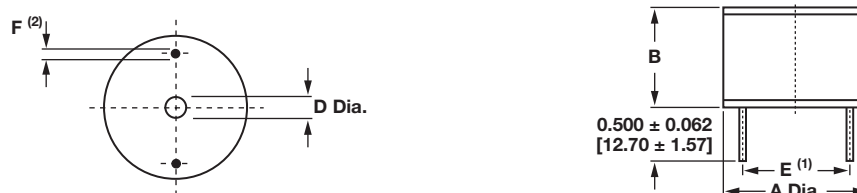
RoHS
COMPLIANT
HALOGEN
FREE

MECHANICAL SPECIFICATIONS

Terminals: Extensions of the winding wire, solder coated to within 0.063" [1.60 mm] of body

Mounting: Center hole for mechanical mounting, insulated bushings recommended for center hole mounting

DIMENSIONS in inches [millimeters]



| MODEL | A (MAX.) | B (MAX.) | D (MIN.) |
|-------|---------------|---------------|--------------|
| IHB-1 | 0.660 [16.76] | 0.840 [21.34] | 0.115 [2.92] |
| IHB-2 | 0.825 [20.96] | 0.840 [21.34] | 0.115 [2.92] |
| IHB-3 | 1.100 [27.94] | 0.840 [21.34] | 0.115 [2.92] |
| IHB-4 | 1.600 [40.64] | 1.030 [26.16] | 0.175 [4.45] |
| IHB-5 | 1.600 [40.64] | 1.450 [36.83] | 0.175 [4.45] |
| IHB-6 | 2.000 [50.80] | 1.500 [38.10] | 0.240 [6.10] |

Notes

- (1) E varies between components, see individual model specifications for details, tolerance of ± 0.035
 (2) F varies between components, see individual model specifications for details

STANDARD ELECTRICAL SPECIFICATIONS

| MODEL | IND. AT 1 kHz (μ H) | TOL. (%) | DCR MAX. (Ω) | RATED DC CURRENT (A) | LEAD "E" SPACING | MAXIMUM LEAD "F" DIAMETER |
|-------|--------------------------|----------|-----------------------|----------------------|------------------|---------------------------|
| IHB-1 | 1.0 | ± 20 | 0.003 | 14.9 | 0.450 [11.43] | 0.045 [1.15] |
| IHB-1 | 1.2 | ± 20 | 0.003 | 14.9 | 0.450 [11.43] | 0.045 [1.15] |
| IHB-1 | 1.5 | ± 20 | 0.004 | 12.9 | 0.450 [11.43] | 0.045 [1.15] |
| IHB-1 | 1.8 | ± 20 | 0.004 | 12.9 | 0.450 [11.43] | 0.045 [1.15] |
| IHB-1 | 2.2 | ± 20 | 0.005 | 11.6 | 0.450 [11.43] | 0.045 [1.15] |
| IHB-1 | 2.7 | ± 20 | 0.005 | 11.6 | 0.450 [11.43] | 0.045 [1.15] |
| IHB-1 | 3.3 | ± 20 | 0.005 | 11.6 | 0.450 [11.43] | 0.045 [1.15] |
| IHB-1 | 3.9 | ± 20 | 0.006 | 10.6 | 0.450 [11.43] | 0.045 [1.15] |
| IHB-1 | 4.7 | ± 20 | 0.007 | 9.8 | 0.450 [11.43] | 0.045 [1.15] |
| IHB-1 | 5.6 | ± 20 | 0.007 | 9.8 | 0.450 [11.43] | 0.045 [1.15] |
| IHB-1 | 6.8 | ± 20 | 0.008 | 9.2 | 0.450 [11.43] | 0.045 [1.15] |
| IHB-1 | 8.2 | ± 20 | 0.009 | 8.6 | 0.450 [11.43] | 0.045 [1.15] |
| IHB-1 | 10 | ± 10 | 0.010 | 8.2 | 0.450 [11.43] | 0.045 [1.15] |
| IHB-1 | 12 | ± 10 | 0.011 | 7.8 | 0.450 [11.43] | 0.045 [1.15] |
| IHB-1 | 15 | ± 10 | 0.015 | 6.7 | 0.450 [11.43] | 0.040 [1.02] |
| IHB-1 | 18 | ± 10 | 0.016 | 6.5 | 0.450 [11.43] | 0.040 [1.02] |
| IHB-1 | 22 | ± 10 | 0.020 | 5.8 | 0.450 [11.43] | 0.040 [1.02] |
| IHB-1 | 27 | ± 10 | 0.030 | 4.7 | 0.450 [11.43] | 0.032 [0.812] |
| IHB-1 | 33 | ± 10 | 0.040 | 4.1 | 0.475 [12.07] | 0.028 [0.723] |
| IHB-1 | 39 | ± 10 | 0.046 | 3.8 | 0.475 [12.07] | 0.028 [0.723] |



| STANDARD ELECTRICAL SPECIFICATIONS | | | | | | |
|------------------------------------|-----------------------------|-------------|--------------------------|-------------------------|------------------|------------------------------|
| MODEL | IND. AT 1 kHz (μ H) | TOL. (%) | DCR MAX. (Ω) | RATED DC CURRENT (A) | LEAD "E" SPACING | MAXIMUM LEAD "F" DIAMETER |
| IHB-1 | 47 | ± 10 | 0.062 | 3.3 | 0.470 [11.94] | 0.025 [0.644] |
| IHB-1 | 56 | ± 10 | 0.069 | 3.1 | 0.470 [11.94] | 0.025 [0.644] |
| IHB-1 | 68 | ± 10 | 0.077 | 2.9 | 0.500 [12.70] | 0.025 [0.644] |
| IHB-1 | 82 | ± 10 | 0.083 | 2.8 | 0.500 [12.70] | 0.025 [0.644] |
| IHB-1 | 100 | ± 10 | 0.095 | 2.7 | 0.500 [12.70] | 0.025 [0.644] |
| IHB-1 | 120 | ± 10 | 0.127 | 2.3 | 0.500 [12.70] | 0.023 [0.573] |
| IHB-1 | 150 | ± 10 | 0.181 | 1.9 | 0.500 [12.70] | 0.020 [0.510] |
| IHB-1 | 180 | ± 10 | 0.217 | 1.8 | 0.500 [12.70] | 0.020 [0.510] |
| IHB-1 | 220 | ± 10 | 0.240 | 1.7 | 0.500 [12.70] | 0.020 [0.510] |
| IHB-1 | 270 | ± 10 | 0.300 | 1.5 | 0.480 [12.19] | 0.018 [0.455] |
| IHB-1 | 330 | ± 10 | 0.336 | 1.4 | 0.480 [12.19] | 0.018 [0.455] |
| IHB-1 | 390 | ± 10 | 0.460 | 1.2 | 0.480 [12.19] | 0.016 [0.405] |
| IHB-1 | 470 | ± 10 | 0.636 | 1.0 | 0.475 [12.07] | 0.014 [0.361] |
| IHB-1 | 560 | ± 10 | 0.696 | 1.0 | 0.475 [12.07] | 0.014 [0.361] |
| IHB-2 | 1.0 | ± 20 | 0.003 | 17.4 | 0.620 [15.75] | 0.051 [1.29] |
| IHB-2 | 1.2 | ± 20 | 0.003 | 17.4 | 0.620 [15.75] | 0.051 [1.29] |
| IHB-2 | 1.5 | ± 20 | 0.003 | 17.4 | 0.620 [15.75] | 0.051 [1.29] |
| IHB-2 | 1.8 | ± 20 | 0.003 | 17.4 | 0.620 [15.75] | 0.051 [1.29] |
| IHB-2 | 2.2 | ± 20 | 0.004 | 15.1 | 0.620 [15.75] | 0.051 [1.29] |
| IHB-2 | 2.7 | ± 20 | 0.005 | 13.5 | 0.620 [15.75] | 0.051 [1.29] |
| IHB-2 | 3.3 | ± 20 | 0.005 | 13.5 | 0.620 [15.75] | 0.051 [1.29] |
| IHB-2 | 3.9 | ± 20 | 0.005 | 13.5 | 0.620 [15.75] | 0.051 [1.29] |
| IHB-2 | 4.7 | ± 20 | 0.005 | 13.5 | 0.620 [15.75] | 0.051 [1.29] |
| IHB-2 | 5.6 | ± 20 | 0.006 | 12.3 | 0.620 [15.75] | 0.051 [1.29] |
| IHB-2 | 6.8 | ± 20 | 0.007 | 11.4 | 0.620 [15.75] | 0.051 [1.29] |
| IHB-2 | 8.2 | ± 20 | 0.007 | 11.4 | 0.620 [15.75] | 0.051 [1.29] |
| IHB-2 | 10 | ± 10 | 0.009 | 10.0 | 0.620 [15.75] | 0.051 [1.29] |
| IHB-2 | 12 | ± 10 | 0.009 | 10.0 | 0.620 [15.75] | 0.051 [1.29] |
| IHB-2 | 15 | ± 10 | 0.013 | 8.4 | 0.620 [15.75] | 0.045 [1.15] |
| IHB-2 | 18 | ± 10 | 0.018 | 7.1 | 0.615 [15.62] | 0.040 [1.02] |
| IHB-2 | 22 | ± 10 | 0.019 | 6.9 | 0.615 [15.62] | 0.040 [1.02] |
| IHB-2 | 27 | ± 10 | 0.026 | 5.9 | 0.575 [14.61] | 0.036 [0.912] |
| IHB-2 | 33 | ± 10 | 0.029 | 5.6 | 0.575 [14.61] | 0.036 [0.912] |
| IHB-2 | 39 | ± 10 | 0.030 | 5.5 | 0.600 [15.24] | 0.036 [0.912] |
| IHB-2 | 47 | ± 10 | 0.035 | 5.1 | 0.600 [15.24] | 0.036 [0.912] |
| IHB-2 | 56 | ± 10 | 0.039 | 4.8 | 0.600 [15.24] | 0.036 [0.912] |
| IHB-2 | 68 | ± 10 | 0.053 | 4.1 | 0.600 [15.24] | 0.032 [0.812] |
| IHB-2 | 82 | ± 10 | 0.060 | 3.9 | 0.600 [15.24] | 0.032 [0.812] |
| IHB-2 | 100 | ± 10 | 0.080 | 3.4 | 0.600 [15.24] | 0.028 [0.723] |
| IHB-2 | 120 | ± 10 | 0.090 | 3.2 | 0.600 [15.24] | 0.028 [0.723] |
| IHB-2 | 150 | ± 10 | 0.098 | 3.0 | 0.600 [15.24] | 0.028 [0.723] |
| IHB-2 | 180 | ± 10 | 0.110 | 2.9 | 0.600 [15.24] | 0.028 [0.723] |
| IHB-2 | 220 | ± 10 | 0.150 | 2.5 | 0.600 [15.24] | 0.025 [0.644] |
| IHB-2 | 270 | ± 10 | 0.213 | 2.1 | 0.600 [15.24] | 0.023 [0.573] |
| IHB-2 | 330 | ± 10 | 0.305 | 1.7 | 0.600 [15.24] | 0.020 [0.510] |
| IHB-2 | 390 | ± 10 | 0.320 | 1.7 | 0.600 [15.24] | 0.020 [0.510] |
| IHB-2 | 470 | ± 10 | 0.355 | 1.6 | 0.590 [14.99] | 0.020 [0.510] |
| IHB-2 | 560 | ± 10 | 0.388 | 1.5 | 0.590 [14.99] | 0.020 [0.510] |
| IHB-2 | 680 | ± 10 | 0.430 | 1.5 | 0.590 [14.99] | 0.020 [0.510] |
| IHB-2 | 820 | ± 10 | 0.590 | 1.2 | 0.590 [14.99] | 0.018 [0.455] |
| IHB-2 | 1000 | ± 10 | 0.818 | 1.1 | 0.590 [14.99] | 0.016 [0.405] |
| IHB-2 | 1200 | ± 10 | 1.140 | 0.9 | 0.590 [14.99] | 0.014 [0.361] |
| IHB-2 | 1500 | ± 10 | 1.260 | 0.8 | 0.590 [14.99] | 0.014 [0.361] |
| IHB-2 | 1800 | ± 10 | 1.390 | 0.8 | 0.590 [14.99] | 0.014 [0.361] |
| IHB-2 | 2200 | ± 10 | 1.540 | 0.8 | 0.590 [14.99] | 0.014 [0.361] |
| IHB-3 | 1.0 | ± 20 | 0.003 | 20.3 | 0.790 [20.07] | 0.072 [1.83] |
| IHB-3 | 1.2 | ± 20 | 0.003 | 20.3 | 0.790 [20.07] | 0.072 [1.83] |
| IHB-3 | 1.5 | ± 20 | 0.003 | 20.3 | 0.790 [20.07] | 0.072 [1.83] |
| IHB-3 | 1.8 | ± 20 | 0.003 | 20.3 | 0.790 [20.07] | 0.072 [1.83] |
| IHB-3 | 2.2 | ± 20 | 0.003 | 20.3 | 0.790 [20.07] | 0.072 [1.83] |
| IHB-3 | 2.7 | ± 20 | 0.003 | 20.3 | 0.790 [20.07] | 0.072 [1.83] |
| IHB-3 | 3.3 | ± 20 | 0.003 | 20.3 | 0.790 [20.07] | 0.072 [1.83] |
| IHB-3 | 3.9 | ± 20 | 0.003 | 20.3 | 0.790 [20.07] | 0.072 [1.83] |
| IHB-3 | 4.7 | ± 20 | 0.003 | 20.3 | 0.790 [20.07] | 0.072 [1.83] |
| IHB-3 | 5.6 | ± 20 | 0.003 | 20.3 | 0.790 [20.07] | 0.072 [1.83] |
| IHB-3 | 6.8 | ± 20 | 0.004 | 17.6 | 0.790 [20.07] | 0.072 [1.83] |
| IHB-3 | 8.2 | ± 20 | 0.004 | 17.6 | 0.790 [20.07] | 0.072 [1.83] |
| IHB-3 | 10 | ± 10 | 0.006 | 14.4 | 0.770 [19.56] | 0.064 [1.63] |
| IHB-3 | 12 | ± 10 | 0.008 | 12.4 | 0.750 [19.05] | 0.057 [1.45] |
| IHB-3 | 15 | ± 10 | 0.009 | 11.7 | 0.750 [19.05] | 0.057 [1.45] |



| STANDARD ELECTRICAL SPECIFICATIONS | | | | | | |
|------------------------------------|-----------------------------|-------------|--------------------------|-------------------------|------------------|------------------------------|
| MODEL | IND. AT 1 kHz (μ H) | TOL. (%) | DCR MAX. (Ω) | RATED DC CURRENT (A) | LEAD "E" SPACING | MAXIMUM LEAD "F" DIAMETER |
| IHB-3 | 18 | ± 10 | 0.010 | 11.1 | 0.750 [19.05] | 0.057 [1.45] |
| IHB-3 | 22 | ± 10 | 0.011 | 10.6 | 0.750 [19.05] | 0.057 [1.45] |
| IHB-3 | 27 | ± 10 | 0.012 | 10.2 | 0.800 [20.32] | 0.057 [1.45] |
| IHB-3 | 33 | ± 10 | 0.017 | 8.5 | 0.780 [19.81] | 0.051 [1.29] |
| IHB-3 | 39 | ± 10 | 0.022 | 7.5 | 0.780 [19.81] | 0.051 [1.29] |
| IHB-3 | 47 | ± 10 | 0.024 | 7.2 | 0.760 [19.30] | 0.045 [1.15] |
| IHB-3 | 56 | ± 10 | 0.026 | 6.9 | 0.760 [19.30] | 0.045 [1.15] |
| IHB-3 | 68 | ± 10 | 0.029 | 6.5 | 0.760 [19.30] | 0.045 [1.15] |
| IHB-3 | 82 | ± 10 | 0.032 | 6.2 | 0.760 [19.30] | 0.045 [1.150] |
| IHB-3 | 100 | ± 10 | 0.034 | 6.0 | 0.760 [19.30] | 0.045 [1.150] |
| IHB-3 | 120 | ± 10 | 0.046 | 5.2 | 0.740 [18.80] | 0.040 [1.020] |
| IHB-3 | 150 | ± 10 | 0.064 | 4.4 | 0.720 [18.29] | 0.036 [0.912] |
| IHB-3 | 180 | ± 10 | 0.072 | 4.1 | 0.720 [18.29] | 0.036 [0.912] |
| IHB-3 | 220 | ± 10 | 0.080 | 3.9 | 0.790 [20.07] | 0.036 [0.912] |
| IHB-3 | 270 | ± 10 | 0.110 | 3.4 | 0.770 [19.56] | 0.032 [0.812] |
| IHB-3 | 330 | ± 10 | 0.122 | 3.2 | 0.770 [19.56] | 0.032 [0.812] |
| IHB-3 | 390 | ± 10 | 0.169 | 2.7 | 0.740 [18.80] | 0.028 [0.723] |
| IHB-3 | 470 | ± 10 | 0.187 | 2.6 | 0.740 [18.80] | 0.028 [0.723] |
| IHB-3 | 560 | ± 10 | 0.205 | 2.5 | 0.740 [18.80] | 0.028 [0.723] |
| IHB-3 | 680 | ± 10 | 0.256 | 2.2 | 0.725 [18.42] | 0.025 [0.644] |
| IHB-3 | 820 | ± 10 | 0.288 | 2.1 | 0.725 [18.42] | 0.025 [0.644] |
| IHB-3 | 1000 | ± 10 | 0.426 | 1.7 | 0.715 [18.16] | 0.023 [0.573] |
| IHB-3 | 1200 | ± 10 | 0.462 | 1.6 | 0.760 [19.30] | 0.023 [0.573] |
| IHB-3 | 1500 | ± 10 | 0.518 | 1.5 | 0.760 [19.30] | 0.023 [0.573] |
| IHB-3 | 1800 | ± 10 | 0.705 | 1.3 | 0.740 [18.80] | 0.020 [0.510] |
| IHB-3 | 2200 | ± 10 | 1.020 | 1.1 | 0.720 [18.29] | 0.018 [0.455] |
| IHB-3 | 2700 | ± 10 | 1.140 | 1.0 | 0.720 [18.29] | 0.018 [0.455] |
| IHB-3 | 3300 | ± 10 | 1.270 | 1.0 | 0.720 [18.29] | 0.018 [0.455] |
| IHB-3 | 3900 | ± 10 | 1.670 | 0.9 | 0.700 [17.78] | 0.016 [0.405] |
| IHB-3 | 4700 | ± 10 | 1.860 | 0.8 | 0.730 [18.54] | 0.016 [0.405] |
| IHB-4 | 1.8 | ± 20 | 0.002 | 33.8 | 1.10 [27.94] | 0.072 [1.83] |
| IHB-4 | 2.2 | ± 20 | 0.002 | 33.8 | 1.10 [27.94] | 0.072 [1.83] |
| IHB-4 | 2.7 | ± 20 | 0.003 | 27.6 | 1.10 [27.94] | 0.072 [1.83] |
| IHB-4 | 3.3 | ± 20 | 0.003 | 27.6 | 1.10 [27.94] | 0.072 [1.83] |
| IHB-4 | 3.9 | ± 20 | 0.003 | 27.6 | 1.10 [27.94] | 0.072 [1.83] |
| IHB-4 | 4.7 | ± 20 | 0.003 | 27.6 | 1.10 [27.94] | 0.072 [1.83] |
| IHB-4 | 5.6 | ± 20 | 0.004 | 23.9 | 1.10 [27.94] | 0.072 [1.83] |
| IHB-4 | 6.8 | ± 20 | 0.004 | 23.9 | 1.10 [27.94] | 0.072 [1.83] |
| IHB-4 | 8.2 | ± 20 | 0.004 | 23.9 | 1.10 [27.94] | 0.072 [1.83] |
| IHB-4 | 10 | ± 10 | 0.005 | 21.4 | 1.10 [27.94] | 0.072 [1.83] |
| IHB-4 | 12 | ± 10 | 0.005 | 21.4 | 1.10 [27.94] | 0.072 [1.83] |
| IHB-4 | 15 | ± 10 | 0.006 | 19.5 | 1.10 [27.94] | 0.072 [1.83] |
| IHB-4 | 18 | ± 10 | 0.008 | 16.9 | 1.10 [27.94] | 0.064 [1.63] |
| IHB-4 | 22 | ± 10 | 0.009 | 15.9 | 1.10 [27.94] | 0.064 [1.63] |
| IHB-4 | 27 | ± 10 | 0.010 | 15.1 | 1.10 [27.94] | 0.064 [1.63] |
| IHB-4 | 33 | ± 10 | 0.011 | 14.4 | 1.10 [27.94] | 0.064 [1.63] |
| IHB-4 | 39 | ± 10 | 0.012 | 13.8 | 1.10 [27.94] | 0.064 [1.63] |
| IHB-4 | 47 | ± 10 | 0.018 | 11.3 | 1.10 [27.94] | 0.057 [1.45] |
| IHB-4 | 56 | ± 10 | 0.019 | 11.0 | 1.11 [28.19] | 0.057 [1.45] |
| IHB-4 | 68 | ± 10 | 0.021 | 10.4 | 1.11 [28.19] | 0.057 [1.45] |
| IHB-4 | 82 | ± 10 | 0.023 | 10.0 | 1.11 [28.19] | 0.057 [1.45] |
| IHB-4 | 100 | ± 10 | 0.025 | 9.6 | 1.11 [28.19] | 0.057 [1.45] |
| IHB-4 | 120 | ± 10 | 0.028 | 9.0 | 1.11 [28.19] | 0.057 [1.45] |
| IHB-4 | 150 | ± 10 | 0.040 | 7.6 | 1.10 [27.94] | 0.051 [1.29] |
| IHB-4 | 180 | ± 10 | 0.045 | 7.1 | 1.10 [27.94] | 0.051 [1.29] |
| IHB-4 | 220 | ± 10 | 0.050 | 6.8 | 1.10 [27.94] | 0.051 [1.29] |
| IHB-4 | 270 | ± 10 | 0.056 | 6.4 | 1.10 [27.94] | 0.051 [1.29] |
| IHB-4 | 330 | ± 10 | 0.074 | 5.6 | 1.16 [29.46] | 0.045 [1.15] |
| IHB-4 | 390 | ± 10 | 0.082 | 5.3 | 1.13 [28.70] | 0.045 [1.15] |
| IHB-4 | 470 | ± 10 | 0.114 | 4.5 | 1.13 [28.70] | 0.040 [1.02] |
| IHB-4 | 560 | ± 10 | 0.125 | 4.3 | 1.13 [28.70] | 0.040 [1.02] |
| IHB-4 | 680 | ± 10 | 0.139 | 4.1 | 1.13 [28.70] | 0.040 [1.02] |
| IHB-4 | 820 | ± 10 | 0.154 | 3.9 | 1.13 [28.70] | 0.040 [1.02] |
| IHB-4 | 1000 | ± 10 | 0.216 | 3.3 | 1.10 [27.94] | 0.036 [0.912] |
| IHB-4 | 1200 | ± 10 | 0.232 | 3.1 | 1.10 [27.94] | 0.036 [0.912] |
| IHB-4 | 1500 | ± 10 | 0.324 | 2.7 | 1.14 [28.96] | 0.032 [0.812] |
| IHB-4 | 1800 | ± 10 | 0.360 | 2.5 | 1.14 [28.96] | 0.032 [0.812] |
| IHB-4 | 2200 | ± 10 | 0.494 | 2.2 | 1.11 [28.19] | 0.028 [0.723] |
| IHB-4 | 2700 | ± 10 | 0.555 | 2.0 | 1.11 [28.19] | 0.028 [0.723] |
| IHB-4 | 3300 | ± 10 | 0.773 | 1.7 | 1.09 [27.69] | 0.025 [0.644] |



| STANDARD ELECTRICAL SPECIFICATIONS | | | | | | |
|------------------------------------|-----------------------------|-------------|--------------------------|-------------------------|------------------|------------------------------|
| MODEL | IND. AT 1 kHz (μ H) | TOL. (%) | DCR MAX. (Ω) | RATED DC CURRENT (A) | LEAD "E" SPACING | MAXIMUM LEAD "F" DIAMETER |
| IHB-4 | 3900 | ± 10 | 0.845 | 1.6 | 1.09 [27.69] | 0.025 [0.644] |
| IHB-4 | 4700 | ± 10 | 1.140 | 1.4 | 1.07 [27.18] | 0.023 [0.573] |
| IHB-4 | 5600 | ± 10 | 1.600 | 1.2 | 1.05 [26.67] | 0.020 [0.510] |
| IHB-4 | 6800 | ± 10 | 1.760 | 1.1 | 1.05 [26.67] | 0.020 [0.510] |
| IHB-4 | 8200 | ± 10 | 1.950 | 1.1 | 1.09 [27.69] | 0.020 [0.510] |
| IHB-4 | 10 000 | ± 10 | 2.760 | 0.9 | 1.07 [27.18] | 0.018 [0.455] |
| IHB-4 | 12 000 | ± 10 | 3.040 | 0.9 | 1.07 [27.18] | 0.018 [0.455] |
| IHB-4 | 15 000 | ± 10 | 3.390 | 0.8 | 1.07 [27.18] | 0.018 [0.455] |
| IHB-5 | 1.8 | ± 20 | 0.002 | 36.2 | 1.13 [28.70] | 0.081 [2.05] |
| IHB-5 | 2.2 | ± 20 | 0.002 | 36.2 | 1.13 [28.70] | 0.081 [2.05] |
| IHB-5 | 2.7 | ± 20 | 0.002 | 36.2 | 1.13 [28.70] | 0.081 [2.05] |
| IHB-5 | 3.3 | ± 20 | 0.002 | 36.2 | 1.13 [28.70] | 0.081 [2.05] |
| IHB-5 | 3.9 | ± 20 | 0.003 | 29.5 | 1.13 [28.70] | 0.081 [2.05] |
| IHB-5 | 4.7 | ± 20 | 0.003 | 29.5 | 1.13 [28.70] | 0.081 [2.05] |
| IHB-5 | 5.6 | ± 20 | 0.003 | 29.5 | 1.13 [28.70] | 0.081 [2.05] |
| IHB-5 | 6.8 | ± 20 | 0.003 | 29.5 | 1.13 [28.70] | 0.081 [2.05] |
| IHB-5 | 8.2 | ± 20 | 0.003 | 29.5 | 1.13 [28.70] | 0.081 [2.05] |
| IHB-5 | 10 | ± 10 | 0.004 | 25.6 | 1.13 [28.70] | 0.081 [2.05] |
| IHB-5 | 12 | ± 10 | 0.004 | 25.6 | 1.13 [28.70] | 0.081 [2.05] |
| IHB-5 | 15 | ± 10 | 0.005 | 22.9 | 1.13 [28.70] | 0.081 [2.05] |
| IHB-5 | 18 | ± 10 | 0.007 | 19.3 | 1.10 [27.94] | 0.072 [1.83] |
| IHB-5 | 22 | ± 10 | 0.007 | 19.3 | 1.10 [27.94] | 0.072 [1.83] |
| IHB-5 | 27 | ± 10 | 0.008 | 18.1 | 1.10 [27.94] | 0.072 [1.83] |
| IHB-5 | 33 | ± 10 | 0.009 | 17.0 | 1.10 [27.94] | 0.072 [1.83] |
| IHB-5 | 39 | ± 10 | 0.010 | 16.2 | 1.10 [27.94] | 0.072 [1.83] |
| IHB-5 | 47 | ± 10 | 0.011 | 15.4 | 1.10 [27.94] | 0.072 [1.83] |
| IHB-5 | 56 | ± 10 | 0.013 | 14.2 | 1.10 [27.94] | 0.072 [1.83] |
| IHB-5 | 68 | ± 10 | 0.015 | 13.2 | 1.10 [27.94] | 0.072 [1.83] |
| IHB-5 | 82 | ± 10 | 0.017 | 12.4 | 1.10 [27.94] | 0.072 [1.83] |
| IHB-5 | 100 | ± 10 | 0.018 | 12.1 | 1.10 [27.94] | 0.072 [1.83] |
| IHB-5 | 120 | ± 10 | 0.022 | 10.9 | 1.08 [27.43] | 0.064 [1.63] |
| IHB-5 | 150 | ± 10 | 0.025 | 10.2 | 1.08 [27.43] | 0.064 [1.63] |
| IHB-5 | 180 | ± 10 | 0.035 | 8.6 | 1.12 [28.45] | 0.057 [1.45] |
| IHB-5 | 220 | ± 10 | 0.040 | 8.1 | 1.12 [28.45] | 0.057 [1.45] |
| IHB-5 | 270 | ± 10 | 0.044 | 7.7 | 1.12 [28.45] | 0.057 [1.45] |
| IHB-5 | 330 | ± 10 | 0.049 | 7.3 | 1.12 [28.45] | 0.057 [1.45] |
| IHB-5 | 390 | ± 10 | 0.070 | 6.1 | 1.09 [27.69] | 0.051 [1.29] |
| IHB-5 | 470 | ± 10 | 0.078 | 5.8 | 1.09 [27.69] | 0.051 [1.29] |
| IHB-5 | 560 | ± 10 | 0.105 | 5.0 | 1.07 [27.18] | 0.045 [1.15] |
| IHB-5 | 680 | ± 10 | 0.115 | 4.8 | 1.07 [27.18] | 0.045 [1.15] |
| IHB-5 | 820 | ± 10 | 0.127 | 4.5 | 1.07 [27.18] | 0.045 [1.15] |
| IHB-5 | 1000 | ± 10 | 0.176 | 3.9 | 1.05 [26.67] | 0.040 [1.02] |
| IHB-5 | 1200 | ± 10 | 0.195 | 3.7 | 1.05 [26.67] | 0.040 [1.02] |
| IHB-5 | 1500 | ± 10 | 0.274 | 3.1 | 1.03 [26.16] | 0.036 [0.912] |
| IHB-5 | 1800 | ± 10 | 0.302 | 2.9 | 1.10 [27.94] | 0.036 [0.912] |
| IHB-5 | 2200 | ± 10 | 0.338 | 2.8 | 1.10 [27.94] | 0.036 [0.912] |
| IHB-5 | 2700 | ± 10 | 0.459 | 2.4 | 1.08 [27.43] | 0.032 [0.812] |
| IHB-5 | 3300 | ± 10 | 0.642 | 2.0 | 1.06 [26.92] | 0.028 [0.723] |
| IHB-5 | 3900 | ± 10 | 0.699 | 1.9 | 1.06 [26.92] | 0.028 [0.723] |
| IHB-5 | 4700 | ± 10 | 0.775 | 1.8 | 1.06 [26.92] | 0.028 [0.723] |
| IHB-5 | 5600 | ± 10 | 0.843 | 1.8 | 1.06 [26.92] | 0.028 [0.723] |
| IHB-5 | 6800 | ± 10 | 1.150 | 1.5 | 1.04 [26.42] | 0.025 [0.644] |
| IHB-5 | 8200 | ± 10 | 1.260 | 1.4 | 1.09 [27.69] | 0.025 [0.644] |
| IHB-5 | 10 000 | ± 10 | 1.740 | 1.2 | 1.07 [27.18] | 0.023 [0.573] |
| IHB-5 | 12 000 | ± 10 | 1.920 | 1.2 | 1.07 [27.18] | 0.023 [0.573] |
| IHB-5 | 15 000 | ± 10 | 2.170 | 1.1 | 1.07 [27.18] | 0.023 [0.573] |
| IHB-6 | 4.7 | ± 20 | 0.002 | 43.5 | 1.43 [36.32] | 0.102 [2.59] |
| IHB-6 | 5.6 | ± 20 | 0.002 | 43.5 | 1.43 [36.32] | 0.102 [2.59] |
| IHB-6 | 6.8 | ± 20 | 0.003 | 35.5 | 1.43 [36.32] | 0.102 [2.59] |
| IHB-6 | 8.2 | ± 20 | 0.003 | 35.5 | 1.43 [36.32] | 0.102 [2.59] |
| IHB-6 | 10 | ± 10 | 0.003 | 35.5 | 1.43 [36.32] | 0.102 [2.59] |
| IHB-6 | 12 | ± 10 | 0.004 | 30.7 | 1.43 [36.32] | 0.102 [2.59] |
| IHB-6 | 15 | ± 10 | 0.004 | 30.7 | 1.43 [36.32] | 0.102 [2.59] |
| IHB-6 | 18 | ± 10 | 0.005 | 27.5 | 1.43 [36.32] | 0.102 [2.59] |
| IHB-6 | 22 | ± 10 | 0.005 | 27.5 | 1.43 [36.32] | 0.102 [2.59] |
| IHB-6 | 27 | ± 10 | 0.006 | 25.1 | 1.43 [36.32] | 0.102 [2.59] |
| IHB-6 | 33 | ± 10 | 0.006 | 25.1 | 1.43 [36.32] | 0.102 [2.59] |
| IHB-6 | 39 | ± 10 | 0.006 | 25.1 | 1.43 [36.32] | 0.102 [2.59] |
| IHB-6 | 47 | ± 10 | 0.008 | 21.7 | 1.53 [38.86] | 0.102 [2.59] |
| IHB-6 | 56 | ± 10 | 0.009 | 20.5 | 1.53 [38.86] | 0.102 [2.59] |



STANDARD ELECTRICAL SPECIFICATIONS

| MODEL | IND. AT 1 kHz (μ H) | TOL. (%) | DCR MAX. (Ω) | RATED DC CURRENT (A) | LEAD "E" SPACING | MAXIMUM LEAD "F" DIAMETER |
|-------|-----------------------------|-------------|--------------------------|-------------------------|------------------|------------------------------|
| IHB-6 | 68 | ± 10 | 0.009 | 20.5 | 1.53 [38.86] | 0.102 [2.59] |
| IHB-6 | 82 | ± 10 | 0.010 | 19.4 | 1.53 [38.86] | 0.102 [2.59] |
| IHB-6 | 100 | ± 10 | 0.014 | 16.4 | 1.45 [36.83] | 0.081 [2.05] |
| IHB-6 | 120 | ± 10 | 0.015 | 15.9 | 1.45 [36.83] | 0.081 [2.05] |
| IHB-6 | 150 | ± 10 | 0.023 | 12.8 | 1.41 [35.81] | 0.072 [1.83] |
| IHB-6 | 180 | ± 10 | 0.025 | 12.3 | 1.41 [35.81] | 0.072 [1.83] |
| IHB-6 | 220 | ± 10 | 0.028 | 11.6 | 1.41 [35.81] | 0.072 [1.83] |
| IHB-6 | 270 | ± 10 | 0.030 | 11.2 | 1.41 [35.81] | 0.072 [1.83] |
| IHB-6 | 330 | ± 10 | 0.040 | 9.7 | 1.38 [35.05] | 0.064 [1.63] |
| IHB-6 | 390 | ± 10 | 0.055 | 8.3 | 1.35 [34.29] | 0.057 [1.45] |
| IHB-6 | 470 | ± 10 | 0.061 | 7.9 | 1.35 [34.29] | 0.057 [1.45] |
| IHB-6 | 560 | ± 10 | 0.068 | 7.5 | 1.35 [34.29] | 0.057 [1.45] |
| IHB-6 | 680 | ± 10 | 0.094 | 6.3 | 1.33 [33.78] | 0.051 [1.29] |
| IHB-6 | 820 | ± 10 | 0.104 | 6.0 | 1.33 [33.78] | 0.051 [1.29] |
| IHB-6 | 1000 | ± 10 | 0.143 | 5.1 | 1.31 [33.27] | 0.045 [1.15] |
| IHB-6 | 1200 | ± 10 | 0.156 | 4.9 | 1.40 [35.56] | 0.045 [1.15] |
| IHB-6 | 1500 | ± 10 | 0.219 | 4.2 | 1.37 [34.80] | 0.040 [1.02] |
| IHB-6 | 1800 | ± 10 | 0.241 | 4.0 | 1.37 [34.80] | 0.040 [1.02] |
| IHB-6 | 2200 | ± 10 | 0.270 | 3.7 | 1.37 [34.80] | 0.040 [1.02] |
| IHB-6 | 2700 | ± 10 | 0.364 | 3.2 | 1.34 [34.04] | 0.036 [0.912] |
| IHB-6 | 3300 | ± 10 | 0.498 | 2.8 | 1.32 [33.53] | 0.032 [0.812] |
| IHB-6 | 3900 | ± 10 | 0.548 | 2.6 | 1.32 [33.53] | 0.032 [0.812] |
| IHB-6 | 4700 | ± 10 | 0.608 | 2.5 | 1.32 [33.53] | 0.032 [0.812] |
| IHB-6 | 5600 | ± 10 | 0.671 | 2.4 | 1.38 [35.05] | 0.032 [0.812] |
| IHB-6 | 6800 | ± 10 | 0.750 | 2.2 | 1.38 [35.05] | 0.032 [0.812] |
| IHB-6 | 8200 | ± 10 | 1.030 | 1.9 | 1.35 [34.29] | 0.028 [0.723] |
| IHB-6 | 10 000 | ± 10 | 1.160 | 1.8 | 1.35 [34.29] | 0.028 [0.723] |
| IHB-6 | 12 000 | ± 10 | 1.540 | 1.6 | 1.33 [33.78] | 0.025 [0.644] |
| IHB-6 | 15 000 | ± 10 | 1.750 | 1.5 | 1.33 [33.78] | 0.025 [0.644] |
| IHB-6 | 18 000 | ± 10 | 1.940 | 1.4 | 1.38 [35.05] | 0.025 [0.644] |
| IHB-6 | 22 000 | ± 10 | 2.740 | 1.2 | 1.36 [34.54] | 0.023 [0.573] |
| IHB-6 | 27 000 | ± 10 | 3.710 | 1.0 | 1.33 [33.78] | 0.020 [0.510] |
| IHB-6 | 33 000 | ± 10 | 4.160 | 1.0 | 1.33 [33.78] | 0.020 [0.510] |
| IHB-6 | 39 000 | ± 10 | 5.550 | 0.8 | 1.31 [33.27] | 0.018 [0.455] |
| IHB-6 | 47 000 | ± 10 | 6.190 | 0.8 | 1.34 [34.04] | 0.018 [0.455] |

MARKING

- Model
- Value
- Date code

ORDERING INFORMATION

| IHB-1 | 10 μ H | ± 10 % | EB | e2 |
|-------|------------------|----------------------|--------------|--------------------------------|
| MODEL | INDUCTANCE VALUE | INDUCTANCE TOLERANCE | PACKAGE CODE | JEDEC® LEAD (Pb)-FREE STANDARD |

GLOBAL PART NUMBER

| | | | |
|---|--|--|---|
| <div style="display: flex; justify-content: space-around;"> <div style="border: 1px solid black; padding: 2px;">I</div> <div style="border: 1px solid black; padding: 2px;">H</div> <div style="border: 1px solid black; padding: 2px;">B</div> <div style="border: 1px solid black; padding: 2px;">1</div> </div> <p>MODEL</p> | <div style="display: flex; justify-content: space-around;"> <div style="border: 1px solid black; padding: 2px;">E</div> <div style="border: 1px solid black; padding: 2px;">B</div> </div> <p>PACKAGE CODE</p> | <div style="display: flex; justify-content: space-around;"> <div style="border: 1px solid black; padding: 2px;">1</div> <div style="border: 1px solid black; padding: 2px;">0</div> <div style="border: 1px solid black; padding: 2px;">0</div> </div> <p>INDUCTANCE VALUE</p> | <div style="border: 1px solid black; padding: 2px;">K</div> <p>INDUCTANCE TOLERANCE</p> |
|---|--|--|---|



Disclaimer

ALL PRODUCT, PRODUCT SPECIFICATIONS AND DATA ARE SUBJECT TO CHANGE WITHOUT NOTICE TO IMPROVE RELIABILITY, FUNCTION OR DESIGN OR OTHERWISE.

Vishay Intertechnology, Inc., its affiliates, agents, and employees, and all persons acting on its or their behalf (collectively, "Vishay"), disclaim any and all liability for any errors, inaccuracies or incompleteness contained in any datasheet or in any other disclosure relating to any product.

Vishay makes no warranty, representation or guarantee regarding the suitability of the products for any particular purpose or the continuing production of any product. To the maximum extent permitted by applicable law, Vishay disclaims (i) any and all liability arising out of the application or use of any product, (ii) any and all liability, including without limitation special, consequential or incidental damages, and (iii) any and all implied warranties, including warranties of fitness for particular purpose, non-infringement and merchantability.

Statements regarding the suitability of products for certain types of applications are based on Vishay's knowledge of typical requirements that are often placed on Vishay products in generic applications. Such statements are not binding statements about the suitability of products for a particular application. It is the customer's responsibility to validate that a particular product with the properties described in the product specification is suitable for use in a particular application. Parameters provided in datasheets and / or specifications may vary in different applications and performance may vary over time. All operating parameters, including typical parameters, must be validated for each customer application by the customer's technical experts. Product specifications do not expand or otherwise modify Vishay's terms and conditions of purchase, including but not limited to the warranty expressed therein.

Hyperlinks included in this datasheet may direct users to third-party websites. These links are provided as a convenience and for informational purposes only. Inclusion of these hyperlinks does not constitute an endorsement or an approval by Vishay of any of the products, services or opinions of the corporation, organization or individual associated with the third-party website. Vishay disclaims any and all liability and bears no responsibility for the accuracy, legality or content of the third-party website or for that of subsequent links.

Vishay products are not designed for use in life-saving or life-sustaining applications or any application in which the failure of the Vishay product could result in personal injury or death unless specifically qualified in writing by Vishay. Customers using or selling Vishay products not expressly indicated for use in such applications do so at their own risk. Please contact authorized Vishay personnel to obtain written terms and conditions regarding products designed for such applications.

No license, express or implied, by estoppel or otherwise, to any intellectual property rights is granted by this document or by any conduct of Vishay. Product names and markings noted herein may be trademarks of their respective owners.

OUR CERTIFICATE

DiGi provide top-quality products and perfect service for customer worldwide through standardization, technological innovation and continuous improvement. DiGi through third-party certification, we stricly control the quality of products and services. Welcome your RFQ to

Email: Info@DiGi-Electronics.com



Tel: +00 852-30501935

RFQ Email: Info@DiGi-Electronics.com

DiGi is a global authorized distributor of electronic components.