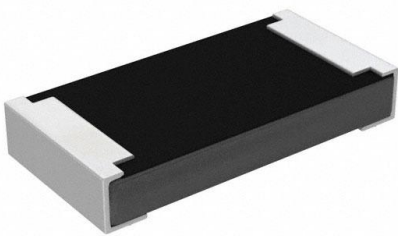


RCP1206B910RJED Datasheet

www.digi-electronics.com



<https://www.DiGi-Electronics.com>

DiGi Electronics Part Number	RCP1206B910RJED-DG
Manufacturer	Vishay Dale
Manufacturer Product Number	RCP1206B910RJED
Description	RES SMD 910 OHM 5% 2.4W 1206
Detailed Description	910 Ohms \pm 5% 2.4W Chip Resistor 1206 (3216 Metric) Moisture Resistant Thick Film

This model RCP1206B910RJED is available at DiGi Electronics.

DiGi Electronics offers a global database of semiconductor and electronic component datasheets.

We welcome your inquiries regarding pricing, lead time, or other product-related questions.

 [Request a Quote](#)

 [Datasheet Search](#)



Tel: +00 852-30501935

RFQ Email: Info@DiGi-Electronics.com

DiGi is a global authorized distributor of electronic components.

Purchase and inquiry

Manufacturer Product Number:

RCP1206B910RJED

Series:

RCP

Resistance:

910 Ohms

Power (Watts):

2.4W

Features:

Moisture Resistant

Operating Temperature:

-65°C ~ 155°C

Supplier Device Package:

1206

Height - Seated (Max):

0.025" (0.64mm)

Failure Rate:

-

Manufacturer:

Vishay Dale

Product Status:

Active

Tolerance:

±5%

Composition:

Thick Film

Temperature Coefficient:

±150ppm/°C

Package / Case:

1206 (3216 Metric)

Size / Dimension:

0.122" L x 0.060" W (3.10mm x 1.52mm)

Number of Terminations:

2

Environmental & Export classification

RoHS Status:

ROHS3 Compliant

ECCN:

EAR99

Moisture Sensitivity Level (MSL):

1 (Unlimited)

HTSUS:

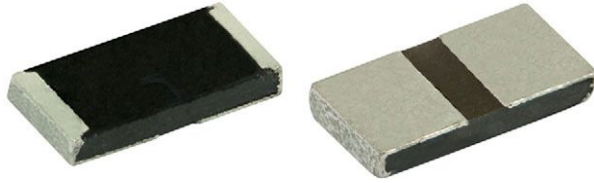
8533.21.0030


www.vishay.com

RCP

Vishay Dale

Thick Film Chip Resistors, Industrial, High Power, Aluminum Nitride Substrate



Aluminum nitride
over 3 x more power - same size

LINKS TO ADDITIONAL RESOURCES



FEATURES

- Thick film resistive element on an aluminum nitride (AlN) substrates
- Very high thermal conductivity in a small package size
- Termination: tin / lead wraparound termination over nickel barrier. Also available with lead (Pb)-free wraparound terminations
- Capability to develop specific reliability programs designed to customer requirements
- Operating temperature range: -65 °C to +155 °C
- High frequency performance to 6 GHz
- Material categorization: for definitions of compliance please see www.vishay.com/doc?99912



RoHS*
Available
HALOGEN
FREE

Note

* This datasheet provides information about parts that are RoHS-compliant and / or parts that are non RoHS-compliant. For example, parts with lead (Pb) terminations are not RoHS-compliant. Please see the information / tables in this datasheet for details

MATERIAL SPECIFICATIONS

Resistive element	Ruthenium oxide
Encapsulation	Epoxy
Substrate	Aluminum nitride
Termination	Solder-coated nickel barrier
Solder finish	Pure tin or tin / lead solder alloy

STANDARD ELECTRICAL SPECIFICATIONS

GLOBAL MODEL	CASE SIZE	POWER RATING ⁽¹⁾ (Standard Board Mount) $P_{25^{\circ}\text{C}}$ W	POWER RATING ⁽¹⁾ (Active Temperature Control) W	MAXIMUM WORKING VOLTAGE V	RESISTANCE RANGE Ω	TOLERANCE \pm %	TEMPERATURE COEFFICIENT \pm ppm/°C
RCP0505	0505	1.4	5.0	$\sqrt{P \times R}$	10 to 2K	1, 2, 5	150
RCP0603	0603	1.5	3.9	$\sqrt{P \times R}$	10 to 2K	1, 2, 5	150
RCP1206	1206	2.4	11	$\sqrt{P \times R}$	10 to 2K	1, 2, 5	150
RCP2512	2512	3.5	22	$\sqrt{P \times R}$	10 to 2K	1, 2, 5	150

Notes

- Consult factory for availability of additional case sizes
- (1) The power rating depends on the maximum temperature of the resistive element. The temperature of the resistive element and adjacent materials will rise due to the power dissipation of the resistor. The majority of this heat/energy is dissipated by conduction through the substrate, terminations, solder joints, and printed circuit board. The maximum power rating in a particular application only applies if the temperature of the resistive element is maintained at or below 155 °C

GLOBAL PART NUMBER INFORMATION

New Global Part Numbering: RCP1206W100RGWB (preferred part numbering format)

R C P 1 2 0 6 W 1 0 0 R G W B

GLOBAL MODEL	BOTTOM TERM.	RESISTANCE VALUE	TOLERANCE CODE	PACKAGING CODE	SPECIAL
RCP0505 RCP0603 RCP1206 RCP2512	W = wide B = traditional	R = Ω K = k Ω 10R0 = 10 Ω 1K30 = 1.3 k Ω	F = \pm 1 % G = \pm 2 % J = \pm 5 %	TP = tin / lead, T/R (full reel) S3 = tin / lead, T/R (1000 pieces) WB = tin / lead, tray S2 = tin / lead, T/R (500 pieces) S6 = tin / lead, T/R (300 pieces) EA = lead (Pb)-free, T/R (full reel) EB = lead (Pb)-free, T/R (1000 pieces) ET = lead (Pb)-free, tray EC = lead (Pb)-free, T/R (500 pieces) ED = lead (Pb)-free, T/R (300 pieces)	Blank = standard (dash number) (up to 3 digits) from 1 to 999 as applicable

Note

- For additional information on packaging, refer to the Surface Mount Resistor Packaging document (www.vishay.com/doc?31543)



PERFORMANCE		
TEST	CONDITIONS OF TEST	TEST RESULTS (TYPICAL TEST LOTS)
Resistance to soldering heat	2 cycles; > 183 °C for 90 s to 120 s	≤ ± 0.20 %
Resistance temperature characteristic	-55 °C to +125 °C	≤ ± 120 ppm
Low temperature operation	-65 °C at rated voltage	≤ ± 0.02 %
Short time overload	RCP0505	3.1 W applied for 5 s
	RCP0603	4.4 W applied for 5 s
	RCP1206	4.7 W applied for 5 s
	RCP2512	7.7 W applied for 5 s
High temperature exposure	+150 °C for 100 h	≤ ± 0.10 %
Moisture resistance	240 h at ≥ 80 % RH	≤ ± 0.15 %
Life	1000 h at +70 °C	≤ ± 0.10 %
Solderability	J-STD-202, test B	95 % coverage
Solder mounting integrity	Per MIL-PRF-55342:	
	RCP0505	1 kg force applied
	RCP0603	2 kg force applied
	RCP1206	2 kg force applied
	RCP2512	3 kg force applied
		No evidence of mechanical damage

DIMENSIONS in inches (millimeters)					
		WIDE BOTTOM TERMINAL (W)		TRADITIONAL TERMINAL (B)	
GLOBAL MODEL	A (LENGTH)	B (WIDTH)	C (HEIGHT)	D (TOP TERM)	E (BOTTOM TERM)
RCP0505W	0.055 ± 0.005 (1.40 ± 0.13)	0.050 ± 0.005 (1.27 ± 0.13)	0.020 ± 0.005 (0.51 ± 0.13)	0.010 ± 0.005 (0.25 ± 0.13)	0.020 ± 0.005 (0.51 ± 0.13)
RCP0505B	0.055 ± 0.005 (1.40 ± 0.13)	0.050 ± 0.005 (1.27 ± 0.13)	0.020 ± 0.005 (0.51 ± 0.13)	0.010 ± 0.005 (0.25 ± 0.13)	0.015 ± 0.005 (0.38 ± 0.13)
RCP0603W	0.063 ± 0.005 (1.60 ± 0.13)	0.032 ± 0.005 (0.81 ± 0.13)	0.018 ± 0.005 (0.46 ± 0.13)	0.012 ± 0.005 (0.30 ± 0.13)	0.023 ± 0.005 (0.58 ± 0.13)
RCP0603B	0.063 ± 0.005 (1.60 ± 0.13)	0.032 ± 0.005 (0.81 ± 0.13)	0.018 ± 0.005 (0.46 ± 0.13)	0.012 ± 0.005 (0.30 ± 0.13)	0.015 ± 0.005 (0.38 ± 0.13)
RCP1206W	0.122 ± 0.005 (3.10 ± 0.13)	0.060 ± 0.005 (1.52 ± 0.13)	0.020 ± 0.005 (0.51 ± 0.13)	0.015 ± 0.005 (0.38 ± 0.13)	0.048 ± 0.005 (1.22 ± 0.13)
RCP1206B	0.122 ± 0.005 (3.10 ± 0.13)	0.060 ± 0.005 (1.52 ± 0.13)	0.020 ± 0.005 (0.51 ± 0.13)	0.015 ± 0.005 (0.38 ± 0.13)	0.015 ± 0.005 (0.38 ± 0.13)
RCP2512W	0.250 ± 0.005 (6.35 ± 0.13)	0.124 ± 0.005 (3.15 ± 0.13)	0.020 ± 0.005 (0.51 ± 0.13)	0.020 ± 0.005 (0.51 ± 0.13)	0.113 ± 0.005 (2.87 ± 0.13)
RCP2512B	0.250 ± 0.005 (6.35 ± 0.13)	0.124 ± 0.005 (3.15 ± 0.13)	0.020 ± 0.005 (0.51 ± 0.13)	0.020 ± 0.005 (0.51 ± 0.13)	0.020 ± 0.005 (0.51 ± 0.13)

**RECOMMENDED SOLDER PAD DIMENSIONS** in inches (millimeters)

WIDE BOTTOM TERMINAL (W)

TRADITIONAL TERMINAL (B)

GLOBAL MODEL	a (LENGTH)	b (WIDTH)	l (SPACING)
RCP0505W	0.040 (1.02)	0.055 (1.40)	0.015 (0.38)
RCP0505B	0.035 (0.89)	0.055 (1.40)	0.025 (0.64)
RCP0603W	0.043 (1.09)	0.037 (0.94)	0.018 (0.46)
RCP0603B	0.035 (0.89)	0.037 (0.94)	0.033 (0.84)
RCP1206W	0.068 (1.73)	0.066 (1.68)	0.018 (0.46)
RCP1206B	0.037 (0.94)	0.066 (1.68)	0.081 (2.06)
RCP2512W	0.133 (3.38)	0.129 (3.28)	0.024 (0.61)
RCP2512B	0.040 (1.02)	0.129 (3.28)	0.210 (5.33)



Disclaimer

ALL PRODUCT, PRODUCT SPECIFICATIONS AND DATA ARE SUBJECT TO CHANGE WITHOUT NOTICE TO IMPROVE RELIABILITY, FUNCTION OR DESIGN OR OTHERWISE.

Vishay Intertechnology, Inc., its affiliates, agents, and employees, and all persons acting on its or their behalf (collectively, "Vishay"), disclaim any and all liability for any errors, inaccuracies or incompleteness contained in any datasheet or in any other disclosure relating to any product.

Vishay makes no warranty, representation or guarantee regarding the suitability of the products for any particular purpose or the continuing production of any product. To the maximum extent permitted by applicable law, Vishay disclaims (i) any and all liability arising out of the application or use of any product, (ii) any and all liability, including without limitation special, consequential or incidental damages, and (iii) any and all implied warranties, including warranties of fitness for particular purpose, non-infringement and merchantability.

Statements regarding the suitability of products for certain types of applications are based on Vishay's knowledge of typical requirements that are often placed on Vishay products in generic applications. Such statements are not binding statements about the suitability of products for a particular application. It is the customer's responsibility to validate that a particular product with the properties described in the product specification is suitable for use in a particular application. Parameters provided in datasheets and / or specifications may vary in different applications and performance may vary over time. All operating parameters, including typical parameters, must be validated for each customer application by the customer's technical experts. Product specifications do not expand or otherwise modify Vishay's terms and conditions of purchase, including but not limited to the warranty expressed therein.

Hyperlinks included in this datasheet may direct users to third-party websites. These links are provided as a convenience and for informational purposes only. Inclusion of these hyperlinks does not constitute an endorsement or an approval by Vishay of any of the products, services or opinions of the corporation, organization or individual associated with the third-party website. Vishay disclaims any and all liability and bears no responsibility for the accuracy, legality or content of the third-party website or for that of subsequent links.

Vishay products are not designed for use in life-saving or life-sustaining applications or any application in which the failure of the Vishay product could result in personal injury or death unless specifically qualified in writing by Vishay. Customers using or selling Vishay products not expressly indicated for use in such applications do so at their own risk. Please contact authorized Vishay personnel to obtain written terms and conditions regarding products designed for such applications.

No license, express or implied, by estoppel or otherwise, to any intellectual property rights is granted by this document or by any conduct of Vishay. Product names and markings noted herein may be trademarks of their respective owners.

OUR CERTIFICATE

DiGi provide top-quality products and perfect service for customer worldwide through standardization, technological innovation and continuous improvement. DiGi through third-party certification, we stricly control the quality of products and services. Welcome your RFQ to

Email: Info@DiGi-Electronics.com



Tel: +00 852-30501935

RFQ Email: Info@DiGi-Electronics.com

DiGi is a global authorized distributor of electronic components.