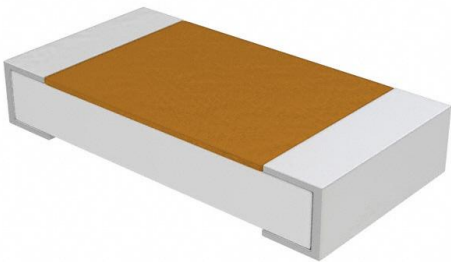


# RCWE1206R360FKEA Datasheet

[www.digi-electronics.com](http://www.digi-electronics.com)



<https://www.DiGi-Electronics.com>

DiGi Electronics Part Number	RCWE1206R360FKEA-DG
Manufacturer	<a href="#">Vishay Dale</a>
Manufacturer Product Number	RCWE1206R360FKEA
Description	RES 0.36 OHM 1% 1/2W 1206
Detailed Description	360 mOhms ±1% 0.5W, 1/2W Chip Resistor 1206 (32 16 Metric) Automotive AEC-Q200, Current Sense, Moisture Resistant Thick Film

This model RCWE1206R360FKEA is available at DiGi Electronics.

DiGi Electronics offers a global database of semiconductor and electronic component datasheets.

We welcome your inquiries regarding pricing, lead time, or other product-related questions.

 [Request a Quote](#)

 [Datasheet Search](#)



Tel: +00 852-30501935

RFQ Email: [Info@DiGi-Electronics.com](mailto:Info@DiGi-Electronics.com)

DiGi is a global authorized distributor of electronic components.

## Purchase and inquiry

Manufacturer Product Number:

RCWE1206R360FKEA

Series:

RCWE

Resistance:

360 mOhms

Power (Watts):

0.5W, 1/2W

Features:

Automotive AEC-Q200, Current Sense, Moisture Resistant

Operating Temperature:

-55°C ~ 155°C

Supplier Device Package:

1206

Size / Dimension:

0.122" L x 0.063" W (3.10mm x 1.60mm)

Number of Terminations:

2

Manufacturer:

Vishay Dale

Product Status:

Active

Tolerance:

±1%

Composition:

Thick Film

Temperature Coefficient:

±100ppm/°C

Package / Case:

1206 (3216 Metric)

Ratings:

AEC-Q200

Height - Seated (Max):

0.028" (0.70mm)

Failure Rate:

-

## Environmental & Export classification

RoHS Status:

ROHS3 Compliant

REACH Status:

REACH Unaffected

HTSUS:

8533.21.0030

Moisture Sensitivity Level (MSL):

1 (Unlimited)

ECCN:

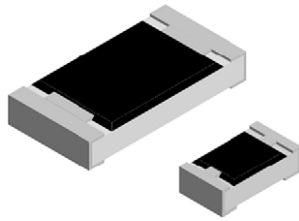
EAR99


[www.vishay.com](http://www.vishay.com)

RCWE

Vishay Dale

## Thick Film Surface Mount Chip Resistors, Wraparound, Extremely Low Value (0.01 $\Omega$ to 0.976 $\Omega$ )



### LINKS TO ADDITIONAL RESOURCES



3D Models

### FEATURES

- Extremely low resistance values (0.01  $\Omega$  to 0.976  $\Omega$ )
- Sulfur resistant (per ASTM B809-95 humid vapor test)
- Enhanced power rating due to long side terminal construction (0612, 1020 types)
- Suitable for current sensing and shunts
- Metal glaze on high quality ceramic
- Protective overglaze
- Lead (Pb)-free solder contacts on Ni barrier layer
- AEC-Q200 qualified
- Material categorization: for definitions of compliance please see [www.vishay.com/doc?99912](http://www.vishay.com/doc?99912)


**RoHS**  
COMPLIANT  
HALOGEN  
**FREE**

STANDARD ELECTRICAL SPECIFICATIONS						
GLOBAL MODEL	CASE SIZE	POWER RATING $P_{70\text{ }^\circ\text{C}}$ W	TEMPERATURE COEFFICIENT + ppm/ $^\circ\text{C}$	RESISTANCE RANGE $\Omega$	TOLERANCE $\pm$ %	E-SERIES <sup>(2)</sup>
RCWE0402 <sup>(3)(4)</sup>	0402	0.125	400	0.033 to 0.05	5.0	24
			200	0.051 to 0.196	1.0, 5.0	24; 96
			100	0.2 to 0.976	0.5 <sup>(1)</sup> , 1.0, 5.0	
RCWE0603 <sup>(4)</sup>	0603	0.2	700	0.010 to 0.018	5.0	24
			400	0.02 to 0.0324	1.0, 5.0	24; 96
			200	0.033 to 0.105	1.0, 5.0	
RCWE0805 <sup>(4)</sup>	0805	0.25	100	0.11 to 0.976	0.5 <sup>(1)</sup> , 1.0, 5.0	24; 96
			400	0.010 to 0.018	5.0	
			300	0.02 to 0.0324	1.0, 5.0	
RCWE0612 <sup>(4)</sup>	0612	1.0	200	0.033 to 0.105	1.0, 5.0	24; 96
			100	0.11 to 0.976	0.5 <sup>(1)</sup> , 1.0, 5.0	
			300	0.010 to 0.016	2.0, 5.0	
RCWE1206 <sup>(4)</sup>	1206	0.5	600	0.010 to 0.018	5.0	24
			300	0.02 to 0.0324	1.0, 5.0	24; 96
			200	0.033 to 0.05	1.0, 5.0	
RCWE1210 <sup>(4)</sup>	1210	1.0	100	0.051 to 0.976	0.5 <sup>(1)</sup> , 1.0, 5.0	24; 96
			500	0.010 to 0.018	5.0	
			300	0.02 to 0.0324	1.0, 5.0	
RCWE1020 <sup>(4)</sup>	1020	2.0	200	0.010 to 0.016	2.0, 5.0	24
			100	0.0162 to 0.976	1.0, 5.0	24; 96
			600	0.010 to 0.018	5.0	
RCWE2010 <sup>(4)</sup>	2010	1.0	300	0.02 to 0.0324	1.0, 5.0	24; 96
			200	0.033 to 0.05	1.0, 5.0	
			100	0.051 to 0.976	0.5 <sup>(1)</sup> , 1.0, 5.0	
RCWE2512 <sup>(4)</sup>	2512	2.0	600	0.010 to 0.018	5.0	24
			300	0.02 to 0.0324	1.0, 5.0	24; 96
			200	0.033 to 0.05	1.0, 5.0	
			100	0.051 to 0.976	0.5 <sup>(1)</sup> , 1.0, 5.0	

### Notes

- Power rating depends on the max. temperature at the solder point, the component placement density and the substrate material
- Part marking: Reference "Surface Mount Resistor Marking" ([www.vishay.com/doc?20020](http://www.vishay.com/doc?20020))
- Temperature range of TCR rating is 0  $^\circ\text{C}$  to 150  $^\circ\text{C}$ . TCR values are (+) range only with no (-) range values; 1/2 of previous tolerance range
- (1) Tight tolerance of 0.5 % is available for resistance values above 0.300  $\Omega$  (0402 size) and above 0.200  $\Omega$  (0603 to 2512 sizes)
- (2) Use E24 decades only for 5.0 % tolerance. E24 or E96 decades are available for 0.5 % and 1.0 % tolerance. Refer to standard decade table ([www.vishay.com/doc?31001](http://www.vishay.com/doc?31001))
- (3) Terminal strength tested per AEC-Q200-006 with the exception of 0.75 kg force is used
- (4) Qualified to AEC-Q200 rev. D



## GLOBAL PART NUMBER INFORMATION

Global Part Numbering Example: RCWE060351L0FNEA (visit [www.vishay.net](http://www.vishay.net) Vishay Dale parts numbering manual for all options)

R C W E 0 6 0 3 5 1 L 0 F N E A

GLOBAL MODEL  
(8 digits)

RCWE0402  
RCWE0603  
RCWE0805  
RCWE0612  
RCWE1206  
RCWE1210  
RCWE1020  
RCWE2010  
RCWE2512

VALUE  
(4 digits)

L = mΩ \*  
R = decimal  
10L0 = 0.01 Ω  
R470 = 0.47 Ω

Note:  
\* Use "L" for resistance  
values < 0.1 Ω

TOLERANCE  
(1 digit)

D = ± 0.5 %  
F = ± 1.0 %  
G = ± 2.0 %  
J = ± 5.0 %

TCR  
(1 digit)

K = +100 ppm/°C  
N = +200 ppm/°C  
M = +300 ppm/°C  
Q = +400 ppm/°C  
P = +500 ppm/°C  
T = +600 ppm/°C  
G = +700 ppm/°C

PACKAGING  
(2 digits)

EA = lead (Pb)-free,  
tape/reel

SPECIAL  
(up to 2 digits)

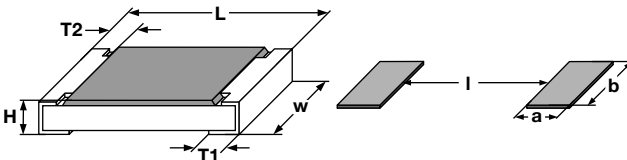
(dash number)  
from 1 to 99 as  
applicable

## TECHNICAL SPECIFICATIONS

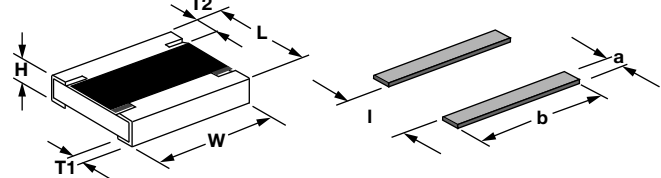
PARAMETER	UNIT	0402	0603	0805	0612	1206	1210	1020	2010	2512
Operating temperature range	°C	-55 to +155								
Maximum operating voltage	V	$(P \times R)^{1/2}$								
Insulation voltage $U_{ins}$ (1 min)	V	> 75	> 100	> 200	> 100	> 300	> 300	> 300	> 300	> 300
Insulation resistance	Ω	> 10 <sup>9</sup>								
Weight/1000 pieces (typical)	g	0.7	3	5.5	11.5	10.5	17.5	27.5	26	40.5

## DIMENSIONS

RCWE0402 to RCWE2512



RCWE0612, RCWE1020



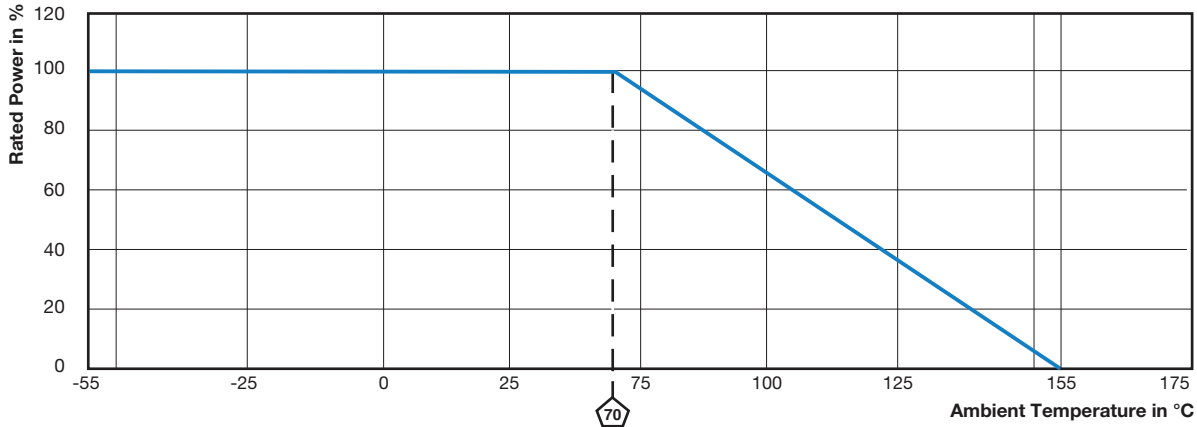
SIZE	DIMENSIONS in millimeters						SOLDER PAD DIMENSIONS in millimeters						
	RESISTANCE RANGE Ω	L	W	H	T1	T2	a	b	l				
0402	0.033 to 0.976	1.05 ± 0.05	0.55 ± 0.05	0.35 ± 0.1	0.3 ± 0.15	0.25 ± 0.1	0.7	0.7	0.3				
0603	0.01 to 0.03	1.6 ± 0.1	0.85 ± 0.1	0.5 ± 0.1	0.5 ± 0.2	0.3 ± 0.2	0.9	1.0	0.4				
	0.033 to 0.976				0.3 ± 0.2					0.7	1.0	0.8	
0805	0.01 to 0.03	2.0 ± 0.15	1.3 ± 0.1	0.55 ± 0.1	0.6 ± 0.2	0.35 ± 0.2	1.0	1.4	0.6				
	0.033 to 0.976				0.4 ± 0.2					0.8	1.4	1.0	
0612	0.01 to 0.976	1.6 ± 0.2	3.2 ± 0.2	0.6 ± 0.1	0.4 ± 0.15	0.25 ± 0.15	0.9	3.5	0.8				
	0.01 to 0.03									0.9 ± 0.2	1.3	1.8	1.0
	0.033 to 0.05									0.8 ± 0.2			
0.051 to 0.976	0.45 ± 0.2	1.0	1.8	1.6									
1206	0.01 to 0.03	3.1 ± 0.15	1.6 ± 0.15	0.6 ± 0.1	0.9 ± 0.2	0.45 ± 0.2	1.2	1.8	1.2				
	0.033 to 0.05									1.0	1.8	1.6	
	0.051 to 0.976									1.0	1.8	1.6	
1210	0.01 to 0.03	3.1 ± 0.2	2.5 ± 0.2	0.6 ± 0.1	0.8 ± 0.2	0.4 ± 0.2	1.3	2.6	1.1				
	0.033 to 0.976				0.4 ± 0.2					0.9	2.6	2.0	
1020	0.01 to 0.976	2.5 ± 0.2	5.0 ± 0.2	0.6 ± 0.1	0.55 ± 0.15	0.30 ± 0.15	1.2	5.5	1.4				
2010	0.01 to 0.03	5.0 ± 0.2	2.5 ± 0.15	0.6 ± 0.1	1.6 ± 0.3	0.6 ± 0.2	2.3	3.0	1.4				
	0.033 to 0.05				0.7 ± 0.3					1.4	3.0	3.2	
	0.051 to 0.976				0.7 ± 0.3					1.4	3.0	3.2	
2512	0.01 to 0.03	6.3 ± 0.2	3.15 ± 0.15	0.6 ± 0.1	2.0 ± 0.3	0.6 ± 0.2	2.8	3.6	1.4				
	0.033 to 0.05				0.8 ± 0.3					1.6	3.6	3.8	
	0.051 to 0.976				0.8 ± 0.3					1.6	3.6	3.8	

### Notes

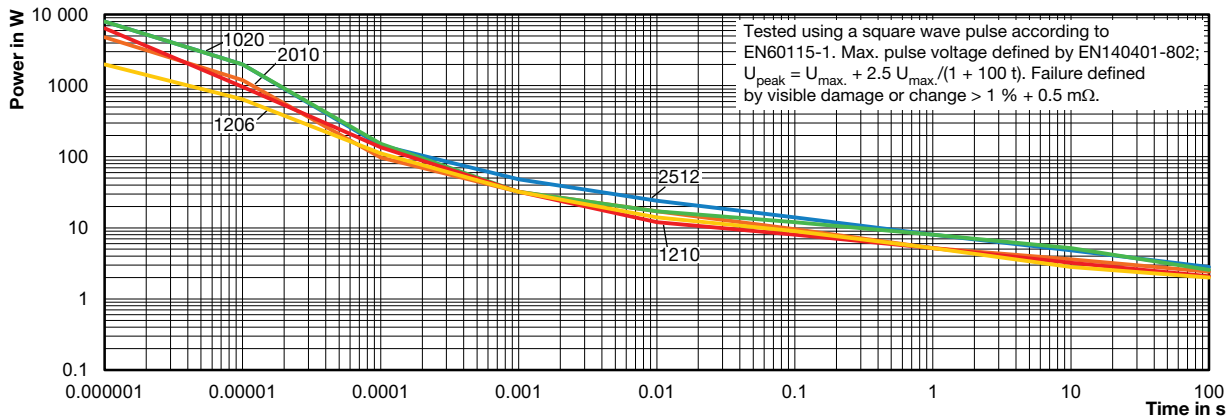
- 3D models available: [www.vishay.com/doc?31106](http://www.vishay.com/doc?31106)
- Surface mount solder profile recommendations: [www.vishay.com/doc?31052](http://www.vishay.com/doc?31052)



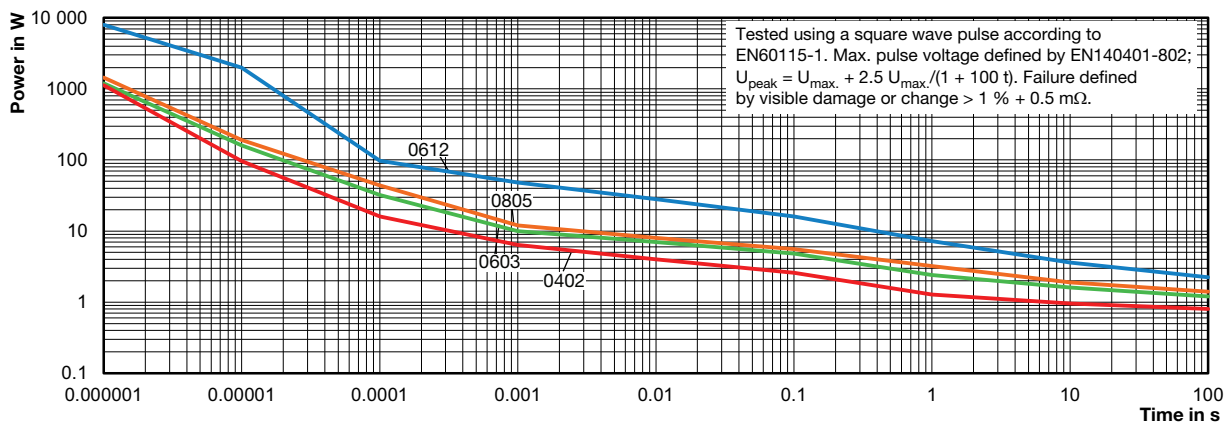
**DERATING**



**SINGLE PULSE**



**SINGLE PULSE**





PERFORMANCE		
TEST	CONDITIONS OF TEST	TEST LIMITS
Thermal shock	MIL-STD-202, method 107, -55 °C to +125 °C, 300 cycles at each extreme	± 1.0 % + 0.0005 Ω
Short time overload	2 x rated power; size and duration - 0402: 0.5 s, 0603 and 0805: 1 s, 1206 and larger: 2 s	± 0.5 % + 0.0005 Ω
High temperature exposure	MIL-STD-202, method 108, 1000 h at T = 125 °C, 0 % power	± 2.0 % + 0.0005 Ω
Temperature cycling	JESD 22, method JA-104, 1000 cycles (-55 °C to +125 °C)	± 2.0 % + 0.0005 Ω
Biased humidity	MIL-STD-202, method 103, 1000 h 85 °C / 85 % RH, 10 % x (P x R) <sup>1/2</sup>	± 2.0 % + 0.0005 Ω
Mechanical shock	MIL-STD-202, method 213, condition C, 10 g's, 6 ms (half sine), 3 directions	± 1.0 % + 0.0005 Ω
Vibration	MIL-STD-202, method 204, 5 g's, 20 min, 12 cycles, 3 directions, 10 Hz to 2000 Hz	± 1.0 % + 0.0005 Ω
Operational life	MIL-STD-202, method 108, 1000 h at T = 125 °C at rated power	± 2.0 % + 0.0005 Ω
Resistance to solder heat	MIL-STD-202, method 210, +260 °C solder, 10 s to 12 s dwell, 25 mm/s emergence	± 1.0 % + 0.0005 Ω
Moisture resistance	MIL-STD-202, method 106, 0 % power, 7a and 7b not required	± 2.0 % + 0.0005 Ω

**Note**

- Contact [ww2bresistors@vishay.com](mailto:ww2bresistors@vishay.com) for application specific performance requirements or qualification data. Typical performance is better than stated test limits

PACKAGING					
MODEL	REEL				
	TAPE WIDTH	DIAMETER	PITCH	PIECES/REEL	CODE
RCWE0402	8 mm / punched paper	180 mm / 7"	2 mm	10 000	EA
RCWE0603	8 mm / punched paper	180 mm / 7"	4 mm	5000	EA
RCWE0805	8 mm / punched paper	180 mm / 7"	4 mm	5000	EA
RCWE0612	8 mm / punched paper	180 mm / 7"	4 mm	5000	EA
RCWE1206	8 mm / punched paper	180 mm / 7"	4 mm	5000	EA
RCWE1210	8 mm / punched paper	180 mm / 7"	4 mm	5000	EA
RCWE1020	12 mm / embossed plastic	180 mm / 7"	4 mm	4000	EA
RCWE2010	12 mm / embossed plastic	180 mm / 7"	4 mm	4000	EA
RCWE2512	12 mm / embossed plastic	180 mm / 7"	8 mm	2000	EA

**Notes**

- Embossed carrier tape per EIA-481-1A
- Additional packaging details at: [www.vishay.com/doc?31543](http://www.vishay.com/doc?31543)

LINKS TO RELATED DOCUMENTS	
<b>SELECTOR GUIDE</b>	
Overview of Automotive Grade Products	<a href="http://www.vishay.com/doc?49924">www.vishay.com/doc?49924</a>
<b>TECHNICAL NOTES</b>	
SMD Current Sense: AEC-Q200 vs. Vishay Qualification	<a href="http://www.vishay.com/doc?30416">www.vishay.com/doc?30416</a>
MIL-PRF vs. AEC-Q200: Do You Know What You Are Getting?	<a href="http://www.vishay.com/doc?11000">www.vishay.com/doc?11000</a>
<b>WHITE PAPER</b>	
Thermal Management for Surface-Mount Devices	<a href="http://www.vishay.com/doc?30380">www.vishay.com/doc?30380</a>
Temperature Coefficient of Resistance for Current Sensing	<a href="http://www.vishay.com/doc?30405">www.vishay.com/doc?30405</a>



## Disclaimer

ALL PRODUCT, PRODUCT SPECIFICATIONS AND DATA ARE SUBJECT TO CHANGE WITHOUT NOTICE TO IMPROVE RELIABILITY, FUNCTION OR DESIGN OR OTHERWISE.

Vishay Intertechnology, Inc., its affiliates, agents, and employees, and all persons acting on its or their behalf (collectively, "Vishay"), disclaim any and all liability for any errors, inaccuracies or incompleteness contained in any datasheet or in any other disclosure relating to any product.

Vishay makes no warranty, representation or guarantee regarding the suitability of the products for any particular purpose or the continuing production of any product. To the maximum extent permitted by applicable law, Vishay disclaims (i) any and all liability arising out of the application or use of any product, (ii) any and all liability, including without limitation special, consequential or incidental damages, and (iii) any and all implied warranties, including warranties of fitness for particular purpose, non-infringement and merchantability.

Statements regarding the suitability of products for certain types of applications are based on Vishay's knowledge of typical requirements that are often placed on Vishay products in generic applications. Such statements are not binding statements about the suitability of products for a particular application. It is the customer's responsibility to validate that a particular product with the properties described in the product specification is suitable for use in a particular application. Parameters provided in datasheets and / or specifications may vary in different applications and performance may vary over time. All operating parameters, including typical parameters, must be validated for each customer application by the customer's technical experts. Product specifications do not expand or otherwise modify Vishay's terms and conditions of purchase, including but not limited to the warranty expressed therein.

Hyperlinks included in this datasheet may direct users to third-party websites. These links are provided as a convenience and for informational purposes only. Inclusion of these hyperlinks does not constitute an endorsement or an approval by Vishay of any of the products, services or opinions of the corporation, organization or individual associated with the third-party website. Vishay disclaims any and all liability and bears no responsibility for the accuracy, legality or content of the third-party website or for that of subsequent links.

Vishay products are not designed for use in life-saving or life-sustaining applications or any application in which the failure of the Vishay product could result in personal injury or death unless specifically qualified in writing by Vishay. Customers using or selling Vishay products not expressly indicated for use in such applications do so at their own risk. Please contact authorized Vishay personnel to obtain written terms and conditions regarding products designed for such applications.

No license, express or implied, by estoppel or otherwise, to any intellectual property rights is granted by this document or by any conduct of Vishay. Product names and markings noted herein may be trademarks of their respective owners.

## OUR CERTIFICATE

DiGi provide top-quality products and perfect service for customer worldwide through standardization, technological innovation and continuous improvement. DiGi through third-party certification, we stricly control the quality of products and services. Welcome your RFQ to

Email: [Info@DiGi-Electronics.com](mailto:Info@DiGi-Electronics.com)



Tel: +00 852-30501935

RFQ Email: [Info@DiGi-Electronics.com](mailto:Info@DiGi-Electronics.com)

DiGi is a global authorized distributor of electronic components.