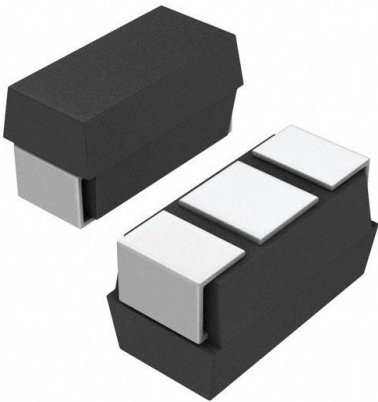


TR3W107K025C0100 Datasheet

www.digi-electronics.com



https://www.DiGi-Electronics.com

DiGi Electronics Part Number	TR3W107K025C0100-DG
Manufacturer	Vishay Sprague
Manufacturer Product Number	TR3W107K025C0100
Description	CAP TANT 100UF 10% 25V 2924
Detailed Description	100 μ F Molded Tantalum Capacitors 25 V 2924 (736 1 Metric) 100mOhm

This model TR3W107K025C0100 is available at DiGi Electronics.

DiGi Electronics offers a global database of semiconductor and electronic component datasheets.

We welcome your inquiries regarding pricing, lead time, or other product-related questions.

 [Request a Quote](#)

 [Datasheet Search](#)



Tel: +00 852-30501935

RFQ Email: Info@DiGi-Electronics.com

DiGi is a global authorized distributor of electronic components.

Purchase and inquiry

Manufacturer Product Number:

TR3W107K025C0100

Series:

TANTAMOUNT™, TR3

Capacitance:

100 µF

Voltage - Rated:

25 V

ESR (Equivalent Series Resistance):

100mOhm

Lifetime @ Temp.:

-

Package / Case:

2924 (7361 Metric)

Height - Seated (Max):

0.150" (3.80mm)

Manufacturer Size Code:

W

Failure Rate:

-

Manufacturer:

Vishay Sprague

Product Status:

Active

Tolerance:

±10%

Type:

Molded

Operating Temperature:

-55°C ~ 125°C

Mounting Type:

Surface Mount

Size / Dimension:

0.287" L x 0.236" W (7.30mm x 6.00mm)

Lead Spacing:

-

Features:

General Purpose

Environmental & Export classification

RoHS Status:

ROHS3 Compliant

REACH Status:

REACH Unaffected

HTSUS:

8532.21.0050

Moisture Sensitivity Level (MSL):

1 (Unlimited)

ECCN:

EAR99



Solid Tantalum Surface Mount Chip Capacitors TANTAMOUNT™, Molded Case, Low ESR



FEATURES

- Low ESR
- Surge current tested:
cases A and B - selected ratings
cases C, D, E, and W - all ratings
- Qualified to EIA-717
- Molded case available in seven case codes
- High ripple current carrying capability
- Terminations: 100 % matte tin standard, tin / lead available
- Compatible with “high volume” automatic pick and place equipment
- Compliant terminations
- Moisture sensitivity level 1
- Material categorization: for definitions of compliance please see www.vishay.com/doc?99912



RoHS*
Available

HALOGEN
FREE
GREEN
(5-2008)
Available

LINKS TO ADDITIONAL RESOURCES



PERFORMANCE / ELECTRICAL CHARACTERISTICS

www.vishay.com/doc?40192

Operating Temperature: -55 °C to +125 °C
 (above 85 °C, voltage derating is required)

Capacitance Range: 0.47 µF to 1000 µF

Capacitance Tolerance: ± 10 %, ± 20 %

Voltage Rating: 4 V_{DC} to 75 V_{DC}

Note

- For recommended voltage derating guidelines see “Typical Performance Characteristics”

Note

* This datasheet provides information about parts that are RoHS-compliant and / or parts that are non RoHS-compliant. For example, parts with lead (Pb) terminations are not RoHS-compliant. Please see the information / tables in this datasheet for details

APPLICATIONS

- Industrial
- Telecom infrastructure
- Consumer
- Computer
- General purpose

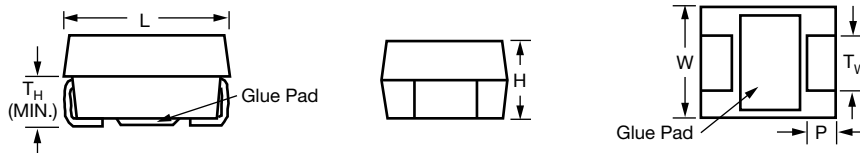
ORDERING INFORMATION						
TR3	D	107	K	010	C	0100
TYPE	CASE CODE	CAPACITANCE	CAPACITANCE TOLERANCE	DC VOLTAGE RATING AT +85 °C	TERMINATION AND PACKAGING	ESR
	See Ratings and Case Codes table	This is expressed in picofarads. The first two digits are the significant figures. The third is the number of zeros to follow.	K = ± 10 % M = ± 20 %	This is expressed in V. To complete the three-digit block, zeros precede the voltage rating. A decimal point is indicated by an “R” (6R3 = 6.3 V).	<p>Matte tin</p> <p>C = 7" (178 mm) reel D = 13" (330 mm) reel V = 7" (178 mm) reel, dry pack U = 13" (330 mm) reel, dry pack</p> <p>Tin / lead</p> <p>E = 7" (178 mm) reel F = 13" (330 mm) reel T = 7" (178 mm) reel, dry pack W = 13" (330 mm) reel, dry pack</p>	Maximum 100 kHz ESR in mΩ. See note below.

Notes

- We reserve the right to supply higher voltage ratings and tighter capacitance tolerance capacitors in the same case size. Voltage substitutions will be marked with the higher voltage rating. Low ESR solid tantalum chip capacitors allow delta ESR of 1.25 times the datasheet limit after mounting
- Dry pack as specified in J-STD-033



DIMENSIONS in inches [millimeters]



CASE CODE	EIA SIZE	L	W	H	P	Tw	Th (MIN.)
A	3216-18	0.126 ± 0.008 [3.2 ± 0.20]	0.063 ± 0.008 [1.6 ± 0.20]	0.063 ± 0.008 [1.6 ± 0.20]	0.031 ± 0.012 [0.80 ± 0.30]	0.047 ± 0.004 [1.2 ± 0.10]	0.028 [0.70]
B	3528-21	0.138 ± 0.008 [3.5 ± 0.20]	0.110 ± 0.008 [2.8 ± 0.20]	0.075 ± 0.008 [1.9 ± 0.20]	0.031 ± 0.012 [0.80 ± 0.30]	0.087 ± 0.004 [2.2 ± 0.10]	0.028 [0.70]
C	6032-28	0.236 ± 0.012 [6.0 ± 0.30]	0.126 ± 0.012 [3.2 ± 0.30]	0.098 ± 0.012 [2.5 ± 0.30]	0.051 ± 0.012 [1.3 ± 0.30]	0.087 ± 0.004 [2.2 ± 0.10]	0.039 [1.0]
D	7343-31	0.287 ± 0.012 [7.3 ± 0.30]	0.170 ± 0.012 [4.3 ± 0.30]	0.110 ± 0.012 [2.8 ± 0.30]	0.051 ± 0.012 [1.3 ± 0.30]	0.094 ± 0.004 [2.4 ± 0.10]	0.039 [1.0]
E	7343-43	0.287 ± 0.012 [7.3 ± 0.30]	0.169 ± 0.012 [4.3 ± 0.30]	0.157 ± 0.012 [4.0 ± 0.30]	0.051 ± 0.012 [1.3 ± 0.30]	0.094 ± 0.004 [2.4 ± 0.10]	0.039 [1.0]
W	7361-38	0.287 ± 0.012 [7.3 ± 0.30]	0.236 ± 0.012 [6.0 ± 0.30]	0.138 ± 0.012 [3.5 ± 0.30]	0.047 ± 0.008 [1.2 ± 0.20]	0.122 ± 0.004 [3.1 ± 0.10]	0.069 [1.75]

Note

- Glue pad (non-conductive, part of molded case) is dedicated for glue attachment (as user option)

RATINGS AND CASE CODES

µF	4 V	6.3 V	10 V	16 V	20 V	25 V	35 V	50 V	63 V	75 V
0.15								A (10.0)		
0.22							A (6.00)	A (10.0)		
0.33							A (6.00)	A (7.00)		
0.47						A (7.00)	A (4.00), B (4.00)	B (6.00), C (2.30)		
0.68						A (6.00)	A (6.00, 4.00)			
1.0				A (6.20)	A (5.50, 3.00)	A (4.00)	A (6.00, 4.00, 3.00), B (2.00)	B (4.00, 2.00), C (1.60)		D (3.00, 1.50)
1.5					A (3.00)	A (4.00, 3.00), B (1.80)	B (3.00, 2.00), C (2.50, 0.90)	B (2.00), C (1.50)		B (2.00), C (2.00), D (2.00, 1.00)
2.2			A (6.80, 6.00, 1.80)	A (4.00, 3.50, 1.80)	A (4.00, 3.00)	A (4.00), B (1.70, 1.50, 1.20, 0.90)	B (2.50, 2.00, 1.50), C (1.50, 0.90)	B (2.00), C (1.50), D (0.80)		D (1.50)
3.3		A (2.10)		A (4.00, 3.50), B (2.50)	A (4.00), B (1.30)	A (3.50, 3.00), B (2.00, 1.50, 0.75)	B (1.50, 1.00), C (0.80, 0.70, 0.60)	C (1.50), D (0.80)	D (1.00, 0.80)	D (1.20, 1.00, 0.80)
4.7			A (3.00, 1.50, 1.40, 1.00), B (1.40)	A (3.00, 2.50, 2.00, 1.50), B (1.50, 0.80)	A (3.50, 1.80), B (1.00, 0.75)	A (3.50, 3.00), B (1.50, 1.00, 0.90, 0.70), C (0.60, 0.525)	B (1.50, 1.00, 0.70), C (0.70, 0.60, 0.50), D (0.70)	C (1.00, 0.70, 0.50), D (0.70, 0.60, 0.50, 0.30), E (0.60, 0.30)	D (0.70, 0.50)	E (1.50)
6.8		A (1.80)	A (3.00, 1.80), B (1.30)	A (3.00, 1.50), B (1.20, 0.60)	A (3.20, 3.00, 2.60), B (1.00, 0.60)	B (2.00, 1.50, 1.20, 0.70, 0.50, 0.40), C (0.60, 0.50)	C (0.90, 0.475), D (0.50, 0.40, 0.30), E (0.30)	D (0.70, 0.60, 0.50, 0.30), E (0.55, 0.50)		

Note

- ESR limits in Ω are shown in parenthesis



RATINGS AND CASE CODES										
μF	4 V	6.3 V	10 V	16 V	20 V	25 V	35 V	50 V	63 V	75 V
10		A (2.00, 1.50), B (1.50)	A (2.00, 1.80, 1.00, 0.90), B (1.00, 0.80, 0.75)	A (1.70), B (0.80, 0.50), C (0.60, 0.50, 0.45)	B (1.00, 0.50), C (0.70, 0.50, 0.475, 0.45, 0.40)	B (1.30, 1.10, 0.90, 0.45), C (0.60, 0.50, 0.45, 0.30), D (0.40, 0.30)	C (1.20, 0.45), D (0.40, 0.30, 0.26, 0.25, 0.20, 0.135, 0.125), E (0.25, 0.20)	D (0.70, 0.55, 0.45), E (0.70, 0.55, 0.50, 0.40, 0.30)	E (0.60)	
15	A (1.50)	A (2.00, 1.00)	A (2.00, 1.00), B (0.60, 0.45, 0.70), C (0.70)	B (0.80, 0.50), C (0.40)	B (1.00, 0.50), C (0.40)	B (1.00, 0.80, 0.60), C (0.90, 0.425), D (0.35, 0.275, 0.25, 0.20)	C (0.60, 0.40), D (0.35, 0.30, 0.26, 0.225, 0.20, 0.150), E (0.30, 0.225, 0.20, 0.150)	E (0.40, 0.30, 0.25, 0.20)		
22	A (1.50)	A (3.00, 2.00, 1.00, 0.90), B (0.60), C (0.50)	A (1.50, 1.00, 0.90, 0.80), B (1.00, 0.70, 0.50, 0.40), C (0.40, 0.345, 0.30)	B (1.00, 0.70, 0.60, 0.40), C (0.375, 0.350), D (0.25)	B (0.80, 0.70, 0.60, 0.40), C (0.40, 0.375), D (0.30, 0.225, 0.20)	C (1.00, 0.90, 0.425, 0.40, 0.30, 0.275, 0.250), D (0.30, 0.20), E (0.30, 0.20)	D (0.40, 0.30, 0.275, 0.250, 0.20), E (0.30, 0.275, 0.260, 0.20)			
33	A (1.50), B (0.50)	A (2.00, 0.80, 0.60), B (0.45, 0.35, 0.60, 0.50)	B (0.140, 0.65, 0.60, 0.50, 0.425, 0.30), C (0.375, 0.30)	B (0.70, 0.50, 0.35), C (0.30, 0.225), D (0.25, 0.225, 0.15)	C (0.35, 0.30, 0.20), D (0.40, 0.25, 0.20)	D (0.40, 0.30, 0.225, 0.20), E (0.30, 0.20, 0.175)	D (0.40, 0.25), E (0.40, 0.25)			
47	A (0.80, 0.50), B (0.50)	A (0.80), B (0.55, 0.50, 0.35, 0.25), C (0.30, 0.25)	B (0.65, 0.60, 0.50, 0.35), C (0.35, 0.30, 0.20), D (0.22, 0.20, 0.14, 0.135, 0.10)	C (0.50, 0.35, 0.30), D (0.20, 0.15, 0.12, 0.10, 0.080, 0.070)	D (0.20, 0.175, 0.15, 0.10), E (0.15, 0.125)	D (0.35, 0.25, 0.20, 0.15, 0.125, 0.10), E (0.30, 0.20, 0.15, 0.125, 0.10)	E (0.40, 0.20) ⁽¹⁾			
68	B (0.50), C (0.275)	B (0.65, 0.55, 0.50, 0.35, 0.25), C (0.275, 0.25, 0.20), D (0.20, 0.175)	B (1.50, 0.90, 0.75, 0.60), C (0.30, 0.275, 0.225, 0.20), D (0.20, 0.15, 0.10, 0.07), E (0.15)	D (0.15, 0.10, 0.070)	D (0.20, 0.175, 0.15, 0.115), E (0.20, 0.15, 0.125, 0.12)	E (0.25, 0.125)				
100	A (1.00), B (0.45), C (0.225)	B (1.50, 0.50, 0.40, 0.25), C (0.30, 0.25, 0.15, 0.125, 0.10), D (0.15, 0.14)	B (1.40), C (0.20, 0.15, 0.10), D (0.15, 0.10, 0.08, 0.07, 0.065, 0.05), E (0.125, 0.15, 0.10)	D (0.15, 0.10, 0.125, 0.10, 0.075), E (0.15, 0.125, 0.10)	D (0.20, 0.15, 0.10, 0.085, 0.08), E (0.20, 0.15, 0.10), W (0.20, 0.10, 0.08, 0.06)	E (0.30, 0.25), W (0.20, 0.15, 0.10)				
150	B (0.90, 0.50, 0.40), C (0.25), D (0.15)	C (0.30, 0.20), D (0.15, 0.125, 0.075, 0.07, 0.05), E (0.10)	C (0.50), D (0.15, 0.10, 0.075, 0.07, 0.05), E (0.10, 0.08)	D (0.40, 0.15, 0.125, 0.10, 0.085, 0.075, 0.060), E (0.40, 0.15, 0.10, 0.075, 0.060), W (0.075, 0.060)	W (0.20, 0.15, 0.10, 0.08)					
220	B (1.10, 0.70, 0.50, 0.45), C (0.20), D (0.05, 0.15, 0.10)	C (0.30, 0.25, 0.225), D (0.15, 0.10, 0.05), E (0.15, 0.10)	D (0.15, 0.125, 0.10, 0.05), E (0.15, 0.10, 0.070, 0.060, 0.050)	E (0.15, 0.125, 0.10)						

Notes

- ESR limits in Ω are shown in parenthesis
- (1) 125 °C life test post test limits per AEC-Q200



RATINGS AND CASE CODES										
μF	4 V	6.3 V	10 V	16 V	20 V	25 V	35 V	50 V	63 V	75 V
330	D (0.10, 0.45, 0.035, 0.15)	D (0.15, 0.125, 0.10, 0.06, 0.05, 0.45, 0.35), E (0.15, 0.10, 0.05), W (0.10, 0.06, 0.04)	D (0.15, 0.125, 0.10), E (0.10, 0.06), W (0.10, 0.06, 0.04)							
470	D (0.125, 0.10, 0.06, 0.045, 0.035) E (0.10, 0.045, 0.035)	D (0.20, 0.15, 0.125, 0.10), E (0.10, 0.065, 0.06, 0.05), W (0.10, 0.06, 0.05)	E (0.20, 0.15, 0.10, 0.075), W (0.10, 0.06, 0.05)							
680	D (0.10, 0.06), E (0.10, 0.04)	E (0.10)								
1000	E (0.10)	E (0.20, 0.15, 0.10), W (0.05)								

Note

- ESR limits in Ω are shown in parenthesis

MARKING																								
<p>A Case</p>	<table border="1"> <thead> <tr> <th colspan="2">"A" CASE VOLTAGE CODE</th> </tr> <tr> <th>VOLTS</th> <th>CODE</th> </tr> </thead> <tbody> <tr><td>4.0</td><td>G</td></tr> <tr><td>6.3</td><td>J</td></tr> <tr><td>10</td><td>A</td></tr> <tr><td>16</td><td>C</td></tr> <tr><td>20</td><td>D</td></tr> <tr><td>25</td><td>E</td></tr> <tr><td>35</td><td>V</td></tr> <tr><td>50</td><td>T</td></tr> <tr><td>75</td><td>S</td></tr> </tbody> </table>	"A" CASE VOLTAGE CODE		VOLTS	CODE	4.0	G	6.3	J	10	A	16	C	20	D	25	E	35	V	50	T	75	S	<p>B, C, D, E, W Cases</p>
"A" CASE VOLTAGE CODE																								
VOLTS	CODE																							
4.0	G																							
6.3	J																							
10	A																							
16	C																							
20	D																							
25	E																							
35	V																							
50	T																							
75	S																							

Marking

Capacitor marking includes an anode (+) polarity band, capacitance in microfarads and the voltage rating. "A" case capacitors use a letter code for the voltage and EIA capacitance code.

The Vishay identification marking is included if space permits. Vishay marking ("circled 2") may show additives in the form of short lines, depicting actual manufacturing facility. For A case capacitors discontinuation in polarity bar maybe used as actual manufacturing facility designation. Capacitors rated at 6.3 V are marked 6 V.

A manufacturing date code is marked on all capacitors, for details see FAQ: www.vishay.com/doc?40110.

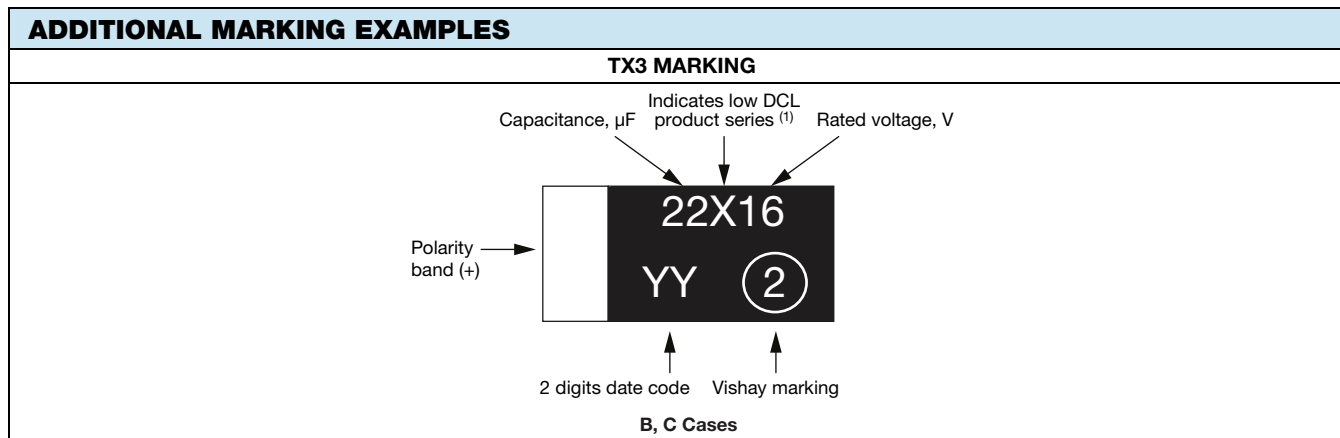
Capacitors may bear different marking scheme if parts are substituted with high performance Vishay Automotive Grade TP3 family or low DCL TX3 family products. Marking examples are shown below.

Call the factory for further explanation.

ADDITIONAL MARKING EXAMPLES	
TP3 MARKING	
<p>A Case</p>	<p>B, C, D, E Cases</p>

Note

- (1) Capital letter indicates lead (Pb)-free



Note

(1) Capital letter indicates lead (Pb)-free

STANDARD RATINGS						
CAPACITANCE (µF)	CASE CODE	PART NUMBER	MAX. DCL AT +25 °C (µA)	MAX. DF AT +25 °C 120 Hz (%)	MAX. ESR AT +25 °C 100 kHz (Ω)	MAX. RIPPLE 100 kHz I _{RMS} (A)
4 V_{DC} AT +85 °C; 2.7 V_{DC} AT +125 °C						
15	A	TR3A156(1)004(2)1500	0.6	6	1.500	0.22
22	A	TR3A226(1)004(2)1500	0.9	6	1.500	0.22
33	A	TR3A336(1)004(2)1500	1.3	6	1.500	0.22
33	B	TR3B336(1)004(2)0500	1.3	6	0.500	0.41
47	A	TR3A476(1)004(2)0800	1.9	14	0.800	0.31
47	A	TR3A476(1)004(2)0500	1.9	14	0.500	0.39
47	B	TR3B476(1)004(2)0500	1.9	6	0.500	0.41
68	B	TR3B686(1)004(2)0500	2.7	6	0.500	0.41
68	C	TR3C686(1)004(2)0275	2.7	6	0.275	0.63
100	A	TR3A107M004(2)1000	10.0	30	1.000	0.27
100	B	TR3B107(1)004(2)0450	4.0	8	0.450	0.43
100	C	TR3C107(1)004(2)0225	4.0	6	0.225	0.70
150	B	TR3B157(1)004(2)0900	6.0	14	0.900	0.31
150	B	TR3B157(1)004(2)0500	6.0	14	0.500	0.41
150	B	TR3B157(1)004(2)0400	6.0	14	0.400	0.46
150	C	TR3C157(1)004(2)0250	6.0	12	0.250	0.66
150	D	TR3D157(1)004(2)0150	6.0	8	0.150	1.00
220	B	TR3B227M004(2)1100	8.8	18	1.100	0.28
220	B	TR3B227M004(2)0700	8.8	18	0.700	0.35
220	B	TR3B227M004(2)0500	8.8	18	0.500	0.41
220	B	TR3B227M004(2)0450	8.8	18	0.450	0.43
220	C	TR3C227(1)004(2)0200	8.8	8	0.200	0.74
220	D	TR3D227(1)004(3)0050	8.8	8	0.050	1.73
220	D	TR3D227(1)004(2)0150	8.8	8	0.150	1.00
220	D	TR3D227(1)004(2)0100	8.8	8	0.100	1.22
330	D	TR3D337(1)004(2)0100	13.2	8	0.100	1.22
330	D	TR3D337(1)004(3)0045	13.2	8	0.045	1.83
330	D	TR3D337(1)004(3)0035	13.2	8	0.035	2.07
330	D	TR3D337(1)004(2)0150	13.2	8	0.150	1.00

Note

- Part number definitions:
 - Capacitance tolerance codes: K, M
 - Terminations and packaging codes: C, D, E, F, V, U, T, W
 - Lead (Pb)-free terminations and packaging codes: C, D, V, U. Except: for case W, 7" reel is available only, codes C and V (dry pack option is recommended)



STANDARD RATINGS						
CAPACITANCE (μ F)	CASE CODE	PART NUMBER	MAX. DCL AT +25 °C (μ A)	MAX. DF AT +25 °C 120 Hz (%)	MAX. ESR AT +25 °C 100 kHz (Ω)	MAX. RIPPLE 100 kHz I_{RMS} (A)
4 V_{DC} AT +85 °C; 2.7 V_{DC} AT +125 °C						
470	D	TR3D477(1)004(2)0125	18.8	10	0.125	1.10
470	D	TR3D477(1)004(2)0100	18.8	10	0.100	1.22
470	D	TR3D477(1)004(2)0060	18.8	10	0.060	1.58
470	D	TR3D477(1)004(3)0045	18.8	10	0.045	1.83
470	D	TR3D477(1)004(3)0035	18.8	10	0.035	2.07
470	E	TR3E477(1)004(2)0100	18.8	10	0.100	1.28
470	E	TR3E477(1)004(3)0045	18.8	10	0.045	1.91
470	E	TR3E477(1)004(3)0035	18.8	10	0.035	2.17
680	D	TR3D687M004(2)0100	27.2	25	0.100	1.22
680	D	TR3D687M004(3)0060	27.2	25	0.060	1.58
680	E	TR3E687(1)004(2)0100	27.2	12	0.100	1.28
680	E	TR3E687(1)004(3)0040	27.2	12	0.040	1.37
1000	E	TR3E108M004(2)0100	40.0	20	0.100	1.28
6.3 V_{DC} AT +85 °C; 4 V_{DC} AT +125 °C						
3.3	A	TR3A335(1)6R3(2)2100	0.5	6	2.100	0.19
6.8	A	TR3A685(1)6R3(2)1800	0.5	6	1.800	0.20
10	A	TR3A106(1)6R3(2)2000	0.6	6	2.000	0.19
10	A	TR3A106(1)6R3(2)1500	0.6	6	1.500	0.22
10	B	TR3B106(1)6R3(2)1500	0.6	6	1.500	0.24
15	A	TR3A156(1)6R3(2)2000	0.9	6	2.000	0.19
15	A	TR3A156(1)6R3(2)1000	0.9	6	1.000	0.27
22	A	TR3A226(1)6R3(2)3000	1.4	6	3.000	0.16
22	A	TR3A226(1)6R3(2)2000	1.4	6	2.000	0.19
22	A	TR3A226(1)6R3(2)1000	1.4	6	1.000	0.27
22	A	TR3A226(1)6R3(2)0900	1.4	6	0.900	0.29
22	B	TR3B226(1)6R3(2)0600	1.4	6	0.600	0.38
22	C	TR3C226(1)6R3(2)0500	1.3	6	0.500	0.47
33	A	TR3A336(1)6R3(2)2000	2.0	14	2.000	0.19
33	A	TR3A336(1)6R3(2)0800	2.0	14	0.800	0.31
33	A	TR3A336(1)6R3(2)0600	2.0	14	0.600	0.35
33	B	TR3B336(1)6R3(2)0450	2.0	6	0.450	0.43
33	B	TR3B336(1)6R3(2)0350	2.0	6	0.350	0.49
33	B	TR3B336(1)6R3(2)0600	2.0	6	0.600	0.38
33	B	TR3B336(1)6R3(2)0500	2.0	6	0.500	0.41
47	A	TR3A476(1)6R3(2)0800	3.0	12	0.800	0.31
47	B	TR3B476(1)6R3(2)0550	3.0	6	0.550	0.39
47	B	TR3B476(1)6R3(2)0500	3.0	6	0.500	0.41
47	B	TR3B476(1)6R3(2)0350	3.0	6	0.350	0.49
47	B	TR3B476(1)6R3(2)0250	3.0	6	0.250	0.58
47	C	TR3C476(1)6R3(2)0300	3.0	6	0.300	0.61
47	C	TR3C476(1)6R3(2)0250	3.0	6	0.250	0.66
68	B	TR3B686(1)6R3(2)0650	4.3	6	0.650	0.36
68	B	TR3B686(1)6R3(2)0550	4.3	6	0.550	0.39
68	B	TR3B686(1)6R3(2)0500	4.3	6	0.500	0.41

Note

- Part number definitions:
 - Capacitance tolerance codes: K, M
 - Terminations and packaging codes: C, D, E, F, V, U, T, W
 - Lead (Pb)-free terminations and packaging codes: C, D, V, U. Except: for case W, 7" reel is available only, codes C and V (dry pack option is recommended)



STANDARD RATINGS						
CAPACITANCE (μ F)	CASE CODE	PART NUMBER	MAX. DCL AT +25 °C (μ A)	MAX. DF AT +25 °C 120 Hz (%)	MAX. ESR AT +25 °C 100 kHz (Ω)	MAX. RIPPLE 100 kHz I_{RMS} (A)
6.3 V_{DC} AT +85 °C; 4 V_{DC} AT +125 °C						
68	B	TR3B686(1)6R3(2)0350	4.3	6	0.350	0.49
68	B	TR3B686(1)6R3(2)0250	4.3	6	0.250	0.58
68	C	TR3C686(1)6R3(2)0275	4.3	6	0.275	0.63
68	C	TR3C686(1)6R3(2)0250	4.3	6	0.250	0.66
68	C	TR3C686(1)6R3(2)0200	4.3	6	0.200	0.74
68	D	TR3D686(1)6R3(2)0200	4.3	6	0.200	0.87
68	D	TR3D686(1)6R3(2)0175	4.3	4	0.175	0.93
100	B	TR3B107(1)6R3(2)1500	6.3	15	1.500	0.24
100	B	TR3B107(1)6R3(2)0500	6.3	15	0.500	0.41
100	B	TR3B107(1)6R3(2)0400	6.3	15	0.400	0.46
100	B	TR3B107(1)6R3(2)0250	6.3	15	0.250	0.58
100	C	TR3C107(1)6R3(2)0300	6.3	6	0.300	0.61
100	C	TR3C107(1)6R3(2)0250	6.3	6	0.250	0.66
100	C	TR3C107(1)6R3(2)0150	6.3	6	0.150	0.86
100	C	TR3C107(1)6R3(2)0125	6.3	6	0.125	0.94
100	C	TR3C107(1)6R3(2)0100	6.3	6	0.100	1.05
100	D	TR3D107(1)6R3(2)0150	6.3	6	0.150	1.00
100	D	TR3D107(1)6R3(2)0140	6.3	6	0.140	1.04
150	C	TR3C157(1)6R3(2)0300	9.4	8	0.300	0.61
150	C	TR3C157(1)6R3(2)0200	9.4	8	0.200	0.74
150	D	TR3D157(1)6R3(2)0150	9.4	8	0.150	1.00
150	D	TR3D157(1)6R3(2)0125	9.4	8	0.125	1.10
150	D	TR3D157(1)6R3(2)0075	9.4	8	0.075	1.41
150	D	TR3D157(1)6R3(2)0070	9.4	8	0.070	1.46
150	D	TR3D157(1)6R3(3)0050	9.4	8	0.050	1.73
150	E	TR3E157(1)6R3(2)0100	9.4	8	0.100	1.28
220	C	TR3C227(1)6R3(2)0300	13.9	14	0.300	0.61
220	C	TR3C227(1)6R3(2)0250	13.9	14	0.250	0.66
220	C	TR3C227(1)6R3(2)0225	13.9	14	0.225	0.70
220	D	TR3D227(1)6R3(2)0150	13.9	8	0.150	1.00
220	D	TR3D227(1)6R3(2)0100	13.9	8	0.100	1.22
220	D	TR3D227(1)6R3(3)0050	13.9	8	0.050	1.73
220	E	TR3E227(1)6R3(2)0150	13.9	8	0.150	1.05
220	E	TR3E227(1)6R3(2)0100	13.9	8	0.100	1.28
330	D	TR3D337(1)6R3(2)0150	20.8	8	0.150	1.00
330	D	TR3D337(1)6R3(2)0125	20.8	8	0.125	1.10
330	D	TR3D337(1)6R3(2)0100	20.8	8	0.100	1.22
330	D	TR3D337(1)6R3(2)0060	20.8	8	0.060	1.58
330	D	TR3D337(1)6R3(3)0050	20.8	8	0.050	1.73
330	D	TR3D337(1)6R3(3)0045	20.8	8	0.045	1.83
330	D	TR3D337(1)6R3(3)0035	20.8	8	0.035	2.07
330	E	TR3E337(1)6R3(3)0150	20.8	8	0.150	1.05
330	E	TR3E337(1)6R3(2)0100	20.8	8	0.100	1.28
330	E	TR3E337(1)6R3(2)0050	20.8	8	0.050	1.82
330	W	TR3W337(1)6R3(3)0100	20.8	8	0.100	1.58
330	W	TR3W337(1)6R3(3)0060	20.8	8	0.060	2.04
330	W	TR3W337(1)6R3(3)0040	20.8	8	0.040	2.50
470	D	TR3D477(1)6R3(2)0200	29.6	14	0.200	0.87
470	D	TR3D477(1)6R3(2)0150	29.6	14	0.150	1.00

Note

- Part number definitions:
 - Capacitance tolerance codes: K, M
 - Terminations and packaging codes: C, D, E, F, V, U, T, W
 - Lead (Pb)-free terminations and packaging codes: C, D, V, U. Except: for case W, 7" reel is available only, codes C and V (dry pack option is recommended)



STANDARD RATINGS						
CAPACITANCE (μ F)	CASE CODE	PART NUMBER	MAX. DCL AT +25 °C (μ A)	MAX. DF AT +25 °C 120 Hz (%)	MAX. ESR AT +25 °C 100 kHz (Ω)	MAX. RIPPLE 100 kHz I_{RMS} (A)
6.3 V_{DC} AT +85 °C; 4 V_{DC} AT +125 °C						
470	D	TR3D477(1)6R3(2)0125	29.6	14	0.125	1.10
470	D	TR3D477(1)6R3(3)0100	29.6	14	0.100	1.22
470	E	TR3E477(1)6R3(2)0100	29.6	10	0.100	1.28
470	E	TR3E477(1)6R3(3)0065	29.6	10	0.065	1.59
470	E	TR3E477(1)6R3(3)0060	29.6	10	0.060	1.66
470	E	TR3E477(1)6R3(3)0050	29.6	10	0.050	1.82
470	W	TR3W477(1)6R3(3)0100	29.6	20	0.100	1.58
470	W	TR3W477(1)6R3(3)0060	29.6	20	0.060	2.04
470	W	TR3W477(1)6R3(3)0050	29.6	20	0.050	2.24
680	E	TR3E687(1)6R3(2)0100	42.8	20	0.100	1.28
1000	E	TR3E108M6R3(2)0200	63.0	30	0.200	0.91
1000	E	TR3E108M6R3(2)0150	63.0	30	0.150	1.05
1000	E	TR3E108M6R3(3)0100	63.0	30	0.100	1.28
1000	W	TR3W108(1)6R3(3)0050	60.0	16	0.050	2.24
10 V_{DC} AT +85 °C; 7 V_{DC} AT +125 °C						
2.2	A	TR3A225(1)010(2)6800	0.5	6	6.800	0.11
2.2	A	TR3A225(1)010(2)6000	0.5	6	6.000	0.11
2.2	A	TR3A225(1)010(2)1800	0.5	6	1.800	0.20
4.7	A	TR3A475(1)010(2)3000	0.5	6	3.000	0.16
4.7	A	TR3A475(1)010(2)1500	0.5	6	1.500	0.22
4.7	A	TR3A475(1)010(2)1400	0.5	6	1.400	0.23
4.7	A	TR3A475(1)010(2)1000	0.5	6	1.000	0.27
4.7	B	TR3B475(1)010(2)1400	0.5	6	1.400	0.25
6.8	A	TR3A685(1)010(2)3000	0.7	6	3.000	0.16
6.8	A	TR3A685(1)010(2)1800	0.7	6	1.800	0.20
6.8	B	TR3B685(1)010(2)1300	0.7	6	1.300	0.26
10	A	TR3A106(1)010(2)2000	1.0	6	2.000	0.19
10	A	TR3A106(1)010(2)1800	1.0	6	1.800	0.20
10	A	TR3A106(1)010(2)1000	1.0	6	1.000	0.27
10	A	TR3A106(1)010(2)0900	1.0	6	0.900	0.29
10	B	TR3B106(1)010(2)1000	1.0	6	1.000	0.29
10	B	TR3B106(1)010(2)0800	1.0	6	0.800	0.33
10	B	TR3B106(1)010(2)0750	1.0	6	0.750	0.34
15	A	TR3A156(1)010(2)2000	1.5	6	2.000	0.19
15	A	TR3A156(1)010(2)1000	1.5	6	1.000	0.27
15	B	TR3B156(1)010(2)0600	1.5	6	0.600	0.38
15	B	TR3B156(1)010(2)0450	1.5	6	0.450	0.43
15	B	TR3B156(1)010(2)0700	1.5	6	0.700	0.35
15	C	TR3C156(1)010(2)0700	1.5	6	0.700	0.40
22	A	TR3A226(1)010(2)1500	2.2	8	1.500	0.22
22	A	TR3A226(1)010(2)1000	2.2	8	1.000	0.27
22	A	TR3A226(1)010(2)0900	2.2	8	0.900	0.29
22	A	TR3A226(1)010(2)0800	2.2	8	0.800	0.31
22	B	TR3B226(1)010(2)1000	2.2	6	1.000	0.29
22	B	TR3B226(1)010(2)0700	2.2	6	0.700	0.35
22	B	TR3B226(1)010(2)0500	2.2	6	0.500	0.41
22	B	TR3B226(1)010(2)0400	2.2	6	0.400	0.46

Note

- Part number definitions:
 - Capacitance tolerance codes: K, M
 - Terminations and packaging codes: C, D, E, F, V, U, T, W
 - Lead (Pb)-free terminations and packaging codes: C, D, V, U. Except: for case W, 7" reel is available only, codes C and V (dry pack option is recommended)



STANDARD RATINGS						
CAPACITANCE (μ F)	CASE CODE	PART NUMBER	MAX. DCL AT +25 °C (μ A)	MAX. DF AT +25 °C 120 Hz (%)	MAX. ESR AT +25 °C 100 kHz (Ω)	MAX. RIPPLE 100 kHz I_{RMS} (A)
10 V_{DC} AT +85 °C; 7 V_{DC} AT +125 °C						
22	C	TR3C226(1)010(2)0400	2.2	6	0.400	0.52
22	C	TR3C226(1)010(2)0345	2.2	6	0.345	0.56
22	C	TR3C226(1)010(2)0300	2.2	6	0.300	0.61
33	B	TR3B336(1)010(2)1400	3.3	6	1.400	0.25
33	B	TR3B336(1)010(2)0650	3.3	6	0.650	0.36
33	B	TR3B336(1)010(2)0600	3.3	6	0.600	0.38
33	B	TR3B336(1)010(2)0500	3.3	6	0.500	0.41
33	B	TR3B336(1)010(2)0425	3.3	6	0.425	0.45
33	B	TR3B336(1)010(2)0300	3.3	6	0.300	0.53
33	C	TR3C336(1)010(2)0375	3.3	6	0.375	0.54
33	C	TR3C336(1)010(2)0300	3.3	6	0.300	0.61
47	B	TR3B476(1)010(2)0650	4.7	6	0.650	0.36
47	B	TR3B476(1)010(2)0600	4.7	6	0.600	0.38
47	B	TR3B476(1)010(2)0500	4.7	6	0.500	0.41
47	B	TR3B476(1)010(2)0350	4.7	6	0.350	0.49
47	C	TR3C476(1)010(2)0350	4.7	6	0.350	0.56
47	C	TR3C476(1)010(2)0300	4.7	6	0.300	0.61
47	C	TR3C476(1)010(2)0200	4.7	6	0.200	0.74
47	D	TR3D476(1)010(2)0220	4.7	6	0.220	0.83
47	D	TR3D476(1)010(2)0200	4.7	6	0.200	0.87
47	D	TR3D476(1)010(2)0140	4.7	6	0.140	1.04
47	D	TR3D476(1)010(2)0135	4.7	6	0.135	1.05
47	D	TR3D476(1)010(2)0100	4.7	6	0.100	1.22
68	B	TR3B686(1)010(2)1500	6.8	14	1.500	0.24
68	B	TR3B686(1)010(2)0900	6.8	14	0.900	0.31
68	B	TR3B686(1)010(2)0750	6.8	14	0.750	0.34
68	B	TR3B686(1)010(2)0600	6.8	14	0.600	0.38
68	C	TR3C686(1)010(2)0300	6.8	6	0.300	0.61
68	C	TR3C686(1)010(2)0275	6.8	6	0.275	0.63
68	C	TR3C686(1)010(2)0225	6.8	6	0.225	0.70
68	C	TR3C686(1)010(2)0200	6.8	6	0.200	0.74
68	D	TR3D686(1)010(2)0200	6.8	6	0.200	0.87
68	D	TR3D686(1)010(2)0150	6.8	6	0.150	1.00
68	D	TR3D686(1)010(2)0100	6.8	6	0.100	1.22
68	D	TR3D686(1)010(3)0070	6.8	6	0.070	1.46
68	E	TR3E686(1)010(2)0150	6.8	4	0.150	1.05
100	B	TR3B107M010(2)1400	10.0	25	1.400	0.25
100	C	TR3C107(1)010(2)0200	10.0	8	0.200	0.74
100	C	TR3C107(1)010(2)0150	10.0	8	0.150	0.86
100	C	TR3C107(1)010(2)0100	10.0	8	0.100	1.05
100	D	TR3D107(1)010(2)0150	10.0	6	0.150	1.00
100	D	TR3D107(1)010(2)0100	10.0	6	0.100	1.22
100	D	TR3D107(1)010(2)0080	10.0	6	0.080	1.37

Note

- Part number definitions:
 - Capacitance tolerance codes: K, M
 - Terminations and packaging codes: C, D, E, F, V, U, T, W
 - Lead (Pb)-free terminations and packaging codes: C, D, V, U. Except: for case W, 7" reel is available only, codes C and V (dry pack option is recommended)



STANDARD RATINGS						
CAPACITANCE (µF)	CASE CODE	PART NUMBER	MAX. DCL AT +25 °C (µA)	MAX. DF AT +25 °C 120 Hz (%)	MAX. ESR AT +25 °C 100 kHz (Ω)	MAX. RIPPLE 100 kHz I _{RMS} (A)
10 V_{DC} AT +85 °C; 7 V_{DC} AT +125 °C						
100	D	TR3D107(1)010(3)0070	10.0	6	0.070	1.52
100	D	TR3D107(1)010(3)0065	10.0	6	0.065	1.46
100	D	TR3D107(1)010(3)0050	10.0	6	0.050	1.73
100	E	TR3E107(1)010(2)0125	10.0	6	0.125	1.15
100	E	TR3E107(1)010(2)0150	10.0	6	0.150	1.05
100	E	TR3E107(1)010(2)0100	10.0	6	0.100	1.28
150	C	TR3C157(1)010(2)0500	15.0	20	0.500	0.47
150	D	TR3D157(1)010(2)0150	15.0	8	0.150	1.00
150	D	TR3D157(1)010(2)0100	15.0	8	0.100	1.22
150	D	TR3D157(1)010(2)0075	15.0	8	0.075	1.41
150	D	TR3D157(1)010(3)0070	15.0	8	0.070	1.46
150	D	TR3D157(1)010(3)0050	15.0	8	0.050	1.73
150	E	TR3E157(1)010(2)0100	15.0	8	0.100	1.28
150	E	TR3E157(1)010(2)0080	15.0	8	0.080	1.44
220	D	TR3D227(1)010(2)0150	22.0	8	0.150	1.00
220	D	TR3D227(1)010(2)0125	22.0	8	0.125	1.10
220	D	TR3D227(1)010(2)0100	22.0	8	0.100	1.22
220	D	TR3D227(1)010(3)0050	22.0	8	0.050	1.73
220	E	TR3E227(1)010(2)0150	22.0	8	0.150	1.05
220	E	TR3E227(1)010(2)0100	22.0	8	0.100	1.28
220	E	TR3E227(1)010(3)0070	22.0	8	0.070	1.54
220	E	TR3E227(1)010(3)0060	22.0	8	0.060	1.66
220	E	TR3E227(1)010(3)0050	22.0	8	0.050	1.82
330	D	TR3D337(1)010(2)0150	33.0	15	0.150	1.00
330	D	TR3D337(1)010(2)0125	33.0	15	0.125	1.10
330	D	TR3D337(1)010(2)0100	33.0	15	0.100	1.22
330	E	TR3E337(1)010(2)0100	33.0	10	0.100	1.28
330	E	TR3E337(1)010(3)0060	33.0	10	0.060	1.66
330	W	TR3W337(1)010(3)0100	33.0	10	0.100	1.58
330	W	TR3W337(1)010(3)0060	33.0	10	0.060	2.04
330	W	TR3W337(1)010(3)0040	33.0	10	0.040	2.50
470	E	TR3E477(1)010(2)0200	47.0	15	0.200	0.91
470	E	TR3E477(1)010(2)0150	47.0	15	0.150	1.05
470	E	TR3E477(1)010(2)0100	47.0	15	0.100	1.28
470	E	TR3E477(1)010(3)0075	47.0	15	0.075	1.48
470	W	TR3W477(1)010(3)0100	47.0	20	0.100	1.58
470	W	TR3W477(1)010(3)0060	47.0	20	0.060	2.04
470	W	TR3W477(1)010(3)0050	47.0	20	0.050	2.24

Note

- Part number definitions:
 - Capacitance tolerance codes: K, M
 - Terminations and packaging codes: C, D, E, F, V, U, T, W
 - Lead (Pb)-free terminations and packaging codes: C, D, V, U. Except: for case W, 7" reel is available only, codes C and V (dry pack option is recommended)



STANDARD RATINGS						
CAPACITANCE (μ F)	CASE CODE	PART NUMBER	MAX. DCL AT +25 °C (μ A)	MAX. DF AT +25 °C 120 Hz (%)	MAX. ESR AT +25 °C 100 kHz (Ω)	MAX. RIPPLE 100 kHz I_{RMS} (A)
16 V_{DC} AT +85 °C; 10 V_{DC} AT +125 °C						
1.0	A	TR3A105(1)016(2)6200	0.5	4	6.200	0.11
2.2	A	TR3A225(1)016(2)4000	0.5	6	4.000	0.14
2.2	A	TR3A225(1)016(2)3500	0.5	6	3.500	0.15
2.2	A	TR3A225(1)016(2)1800	0.5	6	1.800	0.20
3.3	A	TR3A335(1)016(2)4000	0.5	6	4.000	0.14
3.3	A	TR3A335(1)016(2)3500	0.5	6	3.500	0.15
3.3	B	TR3B335(1)016(2)2500	0.5	6	2.500	0.18
4.7	A	TR3A475(1)016(2)3000	0.8	6	3.000	0.16
4.7	A	TR3A475(1)016(2)2500	0.8	6	2.500	0.17
4.7	A	TR3A475(1)016(2)2000	0.8	6	2.000	0.19
4.7	A	TR3A475(1)016(2)1500	0.8	6	1.500	0.22
4.7	B	TR3B475(1)016(2)1500	0.8	6	1.500	0.24
4.7	B	TR3B475(1)016(2)0800	0.8	6	0.800	0.33
6.8	A	TR3A685(1)016(2)3000	1.1	6	3.000	0.16
6.8	A	TR3A685(1)016(2)1500	1.1	6	1.500	0.22
6.8	B	TR3B685(1)016(2)1200	1.1	6	1.200	0.27
6.8	B	TR3B685(1)016(2)0600	1.1	6	0.600	0.38
10	A	TR3A106(1)016(2)1700	1.6	6	1.700	0.21
10	B	TR3B106(1)016(2)0800	1.6	6	0.800	0.33
10	B	TR3B106(1)016(2)0500	1.6	6	0.500	0.41
10	C	TR3C106(1)016(2)0600	1.6	6	0.600	0.43
10	C	TR3C106(1)016(2)0500	1.6	6	0.500	0.47
10	C	TR3C106(1)016(2)0450	1.6	6	0.450	0.49
15	B	TR3B156(1)016(2)0800	2.4	6	0.800	0.33
15	B	TR3B156(1)016(2)0500	2.4	6	0.500	0.41
15	C	TR3C156(1)016(2)0400	2.4	6	0.400	0.52
22	B	TR3B226(1)016(2)1000	3.5	6	1.000	0.29
22	B	TR3B226(1)016(2)0700	3.5	6	0.700	0.35
22	B	TR3B226(1)016(2)0600	3.5	6	0.600	0.38
22	B	TR3B226(1)016(2)0400	3.5	6	0.400	0.46
22	C	TR3C226(1)016(2)0375	3.5	6	0.375	0.54
22	C	TR3C226(1)016(2)0350	3.5	6	0.350	0.56
22	D	TR3D226(1)016(2)0250	3.5	6	0.250	0.77
33	B	TR3B336(1)016(2)0700	5.3	6	0.700	0.35
33	B	TR3B336(1)016(2)0500	5.3	6	0.500	0.41
33	B	TR3B336(1)016(2)0350	5.3	6	0.350	0.49
33	C	TR3C336(1)016(2)0300	5.3	6	0.300	0.61
33	C	TR3C336(1)016(2)0225	5.3	6	0.225	0.70
33	D	TR3D336(1)016(2)0250	5.3	6	0.250	0.77
33	D	TR3D336(1)016(2)0225	5.3	4	0.225	0.82
33	D	TR3D336(1)016(2)0150	5.3	6	0.150	1.00
47	C	TR3C476(1)016(2)0500	7.5	6	0.500	0.47
47	C	TR3C476(1)016(2)0350	7.5	6	0.350	0.56
47	C	TR3C476(1)016(2)0300	7.5	6	0.300	0.61
47	D	TR3D476(1)016(2)0200	7.5	6	0.200	0.87
47	D	TR3D476(1)016(2)0150	7.5	6	0.150	1.00
47	D	TR3D476(1)016(2)0120	7.5	6	0.120	1.12
47	D	TR3D476(1)016(2)0100	7.5	6	0.100	1.22
47	D	TR3D476(1)016(3)0080	7.5	6	0.080	1.37
47	D	TR3D476(1)016(3)0070	7.5	6	0.070	1.46

Note

- Part number definitions:
 - (1) Capacitance tolerance codes: K, M
 - (2) Terminations and packaging codes: C, D, E, F, V, U, T, W
 - (3) Lead (Pb)-free terminations and packaging codes: C, D, V, U. Except: for case W, 7" reel is available only, codes C and V (dry pack option is recommended)



STANDARD RATINGS						
CAPACITANCE (μ F)	CASE CODE	PART NUMBER	MAX. DCL AT +25 °C (μ A)	MAX. DF AT +25 °C 120 Hz (%)	MAX. ESR AT +25 °C 100 kHz (Ω)	MAX. RIPPLE 100 kHz I_{RMS} (A)
16 V_{DC} AT +85 °C; 10 V_{DC} AT +125 °C						
68	D	TR3D686(1)016(2)0150	10.9	6	0.150	1.00
68	D	TR3D686(1)016(2)0100	10.9	6	0.100	1.22
68	D	TR3D686(1)016(3)0070	10.9	6	0.070	1.46
100	D	TR3D107(1)016(2)0150	16.0	8	0.150	1.00
100	D	TR3D107(1)016(2)0125	16.0	8	0.125	1.10
100	D	TR3D107(1)016(2)0100	16.0	8	0.100	1.22
100	D	TR3D107(1)016(3)0075	16.0	8	0.075	1.41
100	E	TR3E107(1)016(2)0150	16.0	8	0.150	1.05
100	E	TR3E107(1)016(2)0125	16.0	8	0.125	1.15
100	E	TR3E107(1)016(2)0100	16.0	8	0.100	1.28
150	D	TR3D157(1)016(2)0400	24.0	8	0.400	0.61
150	D	TR3D157(1)016(2)0150	24.0	8	0.150	1.00
150	D	TR3D157(1)016(2)0125	24.0	8	0.125	1.10
150	D	TR3D157(1)016(2)0100	24.0	8	0.100	1.22
150	D	TR3D157(1)016(2)0085	24.0	8	0.085	1.33
150	D	TR3D157(1)016(3)0075	24.0	8	0.075	1.41
150	D	TR3D157(1)016(3)0060	24.0	8	0.060	1.58
150	E	TR3E157(1)016(2)0400	24.0	8	0.400	0.64
150	E	TR3E157(1)016(2)0150	24.0	8	0.150	1.05
150	E	TR3E157(1)016(2)0100	24.0	8	0.100	1.28
150	E	TR3E157(1)016(3)0075	24.0	8	0.075	1.48
150	E	TR3E157(1)016(3)0060	24.0	8	0.060	1.66
150	W	TR3W157(1)016(3)0075	24.0	10	0.075	1.83
150	W	TR3W157(1)016(3)0060	24.0	10	0.060	2.04
220	E	TR3E227(1)016(2)0150	35.2	14	0.150	1.05
220	E	TR3E227(1)016(2)0125	35.2	14	0.125	1.15
220	E	TR3E227(1)016(2)0100	35.2	14	0.100	1.28
20 V_{DC} AT +85 °C; 13 V_{DC} AT +125 °C						
1.0	A	TR3A105(1)020(2)5500	0.5	4	5.500	0.12
1.0	A	TR3A105(1)020(2)3000	0.5	4	3.000	0.16
1.5	A	TR3A155(1)020(2)3000	0.5	6	3.000	0.16
2.2	A	TR3A225(1)020(2)4000	0.5	6	4.000	0.14
2.2	A	TR3A225(1)020(2)3000	0.5	6	3.000	0.16
3.3	A	TR3A335(1)020(2)4000	0.7	6	4.000	0.14
3.3	B	TR3B335(1)020(2)1300	0.7	6	1.300	0.26
4.7	A	TR3A475(1)020(2)3500	0.9	6	3.500	0.15
4.7	A	TR3A475(1)020(2)1800	0.9	6	1.800	0.20
4.7	B	TR3B475(1)020(2)1000	0.9	6	1.000	0.29
4.7	B	TR3B475(1)020(2)0750	0.9	6	0.750	0.34
6.8	A	TR3A685(1)020(2)3200	1.4	6	3.200	0.15
6.8	A	TR3A685(1)020(2)3000	1.4	6	3.000	0.16
6.8	A	TR3A685(1)020(2)2600	1.4	6	2.600	0.17
6.8	B	TR3B685(1)020(2)1000	1.4	6	1.000	0.29
6.8	B	TR3B685(1)020(2)0600	1.4	6	0.600	0.38
10	B	TR3B106(1)020(2)1000	2.0	6	1.000	0.29
10	B	TR3B106(1)020(2)0500	2.0	6	0.500	0.41
10	C	TR3C106(1)020(2)0700	2.0	6	0.700	0.40
10	C	TR3C106(1)020(2)0500	2.0	6	0.500	0.47
10	C	TR3C106(1)020(2)0475	2.0	6	0.475	0.48
10	C	TR3C106(1)020(2)0450	2.0	6	0.450	0.49
10	C	TR3C106(1)020(2)0400	2.0	6	0.400	0.52

Note

- Part number definitions:
 - (1) Capacitance tolerance codes: K, M
 - (2) Terminations and packaging codes: C, D, E, F, V, U, T, W
 - (3) Lead (Pb)-free terminations and packaging codes: C, D, V, U. Except: for case W, 7" reel is available only, codes C and V (dry pack option is recommended)



STANDARD RATINGS						
CAPACITANCE (μ F)	CASE CODE	PART NUMBER	MAX. DCL AT +25 °C (μ A)	MAX. DF AT +25 °C 120 Hz (%)	MAX. ESR AT +25 °C 100 kHz (Ω)	MAX. RIPPLE 100 kHz I_{RMS} (A)
20 V_{DC} AT +85 °C; 13 V_{DC} AT +125 °C						
15	B	TR3B156(1)020(2)1000	3.0	6	1.000	0.29
15	B	TR3B156(1)020(2)0500	3.0	6	0.500	0.41
15	C	TR3C156(1)020(2)0400	3.0	6	0.400	0.52
22	B	TR3B226(1)020(2)0800	4.4	6	0.800	0.33
22	B	TR3B226(1)020(2)0700	4.4	6	0.700	0.35
22	B	TR3B226(1)020(2)0600	4.4	6	0.600	0.38
22	B	TR3B226(1)020(2)0400	4.4	6	0.400	0.46
22	C	TR3C226(1)020(2)0400	4.4	6	0.400	0.52
22	C	TR3C226(1)020(2)0375	4.4	6	0.375	0.54
22	D	TR3D226(1)020(2)0300	4.4	6	0.300	0.71
22	D	TR3D226(1)020(2)0225	3.5	4	0.225	0.82
22	D	TR3D226(1)020(2)0200	4.4	6	0.200	0.87
33	C	TR3C336(1)020(2)0350	6.6	6	0.350	0.56
33	C	TR3C336(1)020(2)0300	6.6	6	0.300	0.61
33	C	TR3C336(1)020(2)0200	6.6	6	0.200	0.74
33	D	TR3D336(1)020(2)0400	6.6	6	0.400	0.61
33	D	TR3D336(1)020(2)0250	6.6	6	0.250	0.77
33	D	TR3D336(1)020(2)0200	6.6	6	0.200	0.87
47	D	TR3D476(1)020(2)0200	9.4	6	0.200	0.87
47	D	TR3D476(1)020(2)0175	9.4	6	0.175	0.93
47	D	TR3D476(1)020(2)0150	9.4	6	0.150	1.00
47	D	TR3D476(1)020(3)0100	9.4	6	0.100	1.22
47	E	TR3E476(1)020(2)0150	9.4	6	0.150	1.05
47	E	TR3E476(1)020(3)0125	9.4	6	0.125	1.15
68	D	TR3D686(1)020(2)0200	13.6	6	0.200	0.87
68	D	TR3D686(1)020(2)0175	13.6	6	0.175	0.93
68	D	TR3D686(1)020(2)0150	13.6	6	0.150	1.00
68	D	TR3D686(1)020(2)0115	13.6	6	0.115	1.14
68	E	TR3E686(1)020(2)0200	13.6	6	0.200	0.91
68	E	TR3E686(1)020(2)0150	13.6	6	0.150	1.05
68	E	TR3E686(1)020(2)0125	13.6	6	0.125	1.15
68	E	TR3E686(1)020(2)0120	13.6	6	0.120	1.17
100	D	TR3D107(1)020(2)0200	20.0	8	0.200	0.87
100	D	TR3D107(1)020(2)0150	20.0	8	0.150	1.00
100	D	TR3D107(1)020(2)0100	20.0	8	0.100	1.22
100	D	TR3D107(1)020(3)0085	20.0	8	0.085	1.33
100	D	TR3D107(1)020(3)0080	20.0	8	0.080	1.37
100	E	TR3E107(1)020(2)0200	20.0	8	0.200	0.91
100	E	TR3E107(1)020(2)0150	20.0	8	0.150	1.05
100	E	TR3E107(1)020(2)0100	20.0	8	0.100	1.28
100	W	TR3W107(1)020(3)0200	20.0	8	0.200	1.12
100	W	TR3W107(1)020(3)0100	20.0	8	0.100	1.58
100	W	TR3W107(1)020(3)0080	20.0	8	0.080	1.77
100	W	TR3W107(1)020(3)0060	20.0	8	0.060	2.04
150	W	TR3W157(1)020(3)0200	30.0	10	0.200	1.12
150	W	TR3W157(1)020(3)0150	30.0	10	0.150	1.29
150	W	TR3W157(1)020(3)0100	30.0	10	0.100	1.58
150	W	TR3W157(1)020(3)0080	30.0	10	0.080	1.77

Note

- Part number definitions:
 - Capacitance tolerance codes: K, M
 - Terminations and packaging codes: C, D, E, F, V, U, T, W
 - Lead (Pb)-free terminations and packaging codes: C, D, V, U. Except: for case W, 7" reel is available only, codes C and V (dry pack option is recommended)



STANDARD RATINGS						
CAPACITANCE (μ F)	CASE CODE	PART NUMBER	MAX. DCL AT +25 °C (μ A)	MAX. DF AT +25 °C 120 Hz (%)	MAX. ESR AT +25 °C 100 kHz (Ω)	MAX. RIPPLE 100 kHz I_{RMS} (A)
25 V_{DC} AT +85 °C; 17 V_{DC} AT +125 °C						
0.47	A	TR3A474(1)025(2)7000	0.5	4	7.000	0.10
0.68	A	TR3A684(1)025(2)6000	0.5	4	6.000	0.11
1.0	A	TR3A105(1)025(2)4000	0.5	4	4.000	0.14
1.5	A	TR3A155(1)025(2)4000	0.5	6	4.000	0.14
1.5	A	TR3A155(1)025(2)3000	0.5	6	3.000	0.16
1.5	B	TR3B155(1)025(2)1800	0.5	6	1.800	0.22
2.2	A	TR3A225(1)025(2)4000	0.6	6	4.000	0.14
2.2	B	TR3B225(1)025(2)1700	0.6	8	1.700	0.22
2.2	B	TR3B225(1)025(2)1500	0.6	6	1.500	0.24
2.2	B	TR3B225(1)025(2)1200	0.6	6	1.200	0.27
2.2	B	TR3B225(1)025(2)0900	0.6	6	0.900	0.31
3.3	A	TR3A335(1)025(2)3500	0.8	6	3.500	0.15
3.3	A	TR3A335(1)025(2)3000	0.8	6	3.000	0.16
3.3	B	TR3B335(1)025(2)2000	0.8	6	2.000	0.21
3.3	B	TR3B335(1)025(2)1500	0.8	6	1.500	0.24
3.3	B	TR3B335(1)025(2)0750	0.8	6	0.750	0.34
4.7	A	TR3A475(1)025(2)3500	1.2	6	3.500	0.15
4.7	A	TR3A475(1)025(2)3000	1.2	6	3.000	0.16
4.7	B	TR3B475(1)025(2)1500	1.2	6	1.500	0.24
4.7	B	TR3B475(1)025(2)1000	1.2	6	1.000	0.29
4.7	B	TR3B475(1)025(2)0900	1.2	6	9.000	0.10
4.7	B	TR3B475(1)025(2)0700	1.2	6	0.700	0.35
4.7	C	TR3C475(1)025(2)0600	1.2	6	0.600	0.43
4.7	C	TR3C475(1)025(2)0525	1.2	6	0.525	0.46
6.8	B	TR3B685(1)025(2)2000	1.7	6	2.000	0.21
6.8	B	TR3B685(1)025(2)1500	1.7	6	1.500	0.24
6.8	B	TR3B685(1)025(2)1200	1.7	6	1.200	0.27
6.8	B	TR3B685(1)025(2)0700	1.7	6	0.700	0.35
6.8	B	TR3B685(1)025(3)0500	1.7	6	0.500	0.41
6.8	B	TR3B685(1)025(3)0400	1.7	6	0.400	0.46
6.8	C	TR3C685(1)025(2)0600	1.7	6	0.600	0.43
6.8	C	TR3C685(1)025(2)0500	1.7	6	0.500	0.47
10	B	TR3B106(1)025(2)1300	2.5	6	1.300	0.26
10	B	TR3B106(1)025(2)1100	2.5	6	1.100	0.28
10	B	TR3B106(1)025(2)0900	2.5	6	0.900	0.31
10	B	TR3B106(1)025(2)0450	2.5	6	0.450	0.43
10	C	TR3C106(1)025(2)0600	2.5	6	0.600	0.43
10	C	TR3C106(1)025(2)0500	2.5	6	0.500	0.47
10	C	TR3C106(1)025(2)0450	2.5	6	0.450	0.49
10	C	TR3C106(1)025(2)0300	2.5	6	0.300	0.61
10	D	TR3D106(1)025(2)0400	2.5	6	0.400	0.61
10	D	TR3D106(1)025(2)0300	2.5	6	0.300	0.71
15	B	TR3B156(1)025(2)1000	3.8	6	1.000	0.29
15	B	TR3B156(1)025(2)0800	3.8	6	0.800	0.33
15	B	TR3B156(1)025(2)0600	3.8	6	0.600	0.38
15	C	TR3C156(1)025(2)0900	3.8	6	0.900	0.35
15	C	TR3C156(1)025(2)0425	3.8	6	0.425	0.51

Note

- Part number definitions:
 - (1) Capacitance tolerance codes: K, M
 - (2) Terminations and packaging codes: C, D, E, F, V, U, T, W
 - (3) Lead (Pb)-free terminations and packaging codes: C, D, V, U. Except: for case W, 7" reel is available only, codes C and V (dry pack option is recommended)



STANDARD RATINGS						
CAPACITANCE (μ F)	CASE CODE	PART NUMBER	MAX. DCL AT +25 °C (μ A)	MAX. DF AT +25 °C 120 Hz (%)	MAX. ESR AT +25 °C 100 kHz (Ω)	MAX. RIPPLE 100 kHz I_{RMS} (A)
25 V_{DC} AT +85 °C; 17 V_{DC} AT +125 °C						
15	D	TR3D156(1)025(2)0350	3.8	6	0.350	0.65
15	D	TR3D156(1)025(2)0275	3.8	6	0.275	0.74
15	D	TR3D156(1)025(2)0250	3.8	6	0.250	0.77
15	D	TR3D156(1)025(2)0200	3.8	6	0.200	0.87
22	C	TR3C226(1)025(2)1000	5.5	6	1.000	0.33
22	C	TR3C226(1)025(2)0900	5.5	6	0.900	0.35
22	C	TR3C226(1)025(2)0425	5.5	6	0.425	0.51
22	C	TR3C226(1)025(2)0400	5.5	6	0.400	0.52
22	C	TR3C226(1)025(2)0300	5.5	6	0.300	0.61
22	C	TR3C226(1)025(2)0275	5.5	6	0.275	0.63
22	C	TR3C226(1)025(2)0250	5.5	6	0.250	0.66
22	D	TR3D226(1)025(2)0300	5.5	6	0.300	0.71
22	D	TR3D226(1)025(2)0200	5.5	6	0.200	0.87
22	E	TR3E226(1)025(2)0300	5.5	6	0.300	0.74
22	E	TR3E226(1)025(2)0200	5.5	6	0.200	0.91
33	D	TR3D336(1)025(2)0400	8.3	6	0.400	0.61
33	D	TR3D336(1)025(2)0300	8.3	6	0.300	0.71
33	D	TR3D336(1)025(2)0225	8.3	6	0.225	0.82
33	D	TR3D336(1)025(2)0200	8.3	6	0.200	0.87
33	E	TR3E336(1)025(2)0300	8.3	6	0.300	0.74
33	E	TR3E336(1)025(2)0200	8.3	6	0.200	0.91
33	E	TR3E336(1)025(2)0175	6.6	4	0.175	0.97
47	D	TR3D476(1)025(2)0350	11.8	8	0.350	0.65
47	D	TR3D476(1)025(2)0250	11.8	8	0.250	0.77
47	D	TR3D476(1)025(2)0200	11.8	8	0.200	0.87
47	D	TR3D476(1)025(2)0150	11.8	8	0.150	1.00
47	D	TR3D476(1)025(3)0125	11.8	8	0.125	1.10
47	D	TR3D476(1)025(3)0100	11.8	8	0.100	1.22
47	E	TR3E476(1)025(2)0300	11.8	6	0.300	0.74
47	E	TR3E476(1)025(2)0200	11.8	6	0.200	0.91
47	E	TR3E476(1)025(2)0150	11.8	8	0.150	1.05
47	E	TR3E476(1)025(3)0125	11.8	8	0.125	1.15
47	E	TR3E476(1)025(3)0100	11.8	8	0.100	1.28
68	E	TR3E686(1)025(2)0250	17.0	8	0.250	0.81
68	E	TR3E686(1)025(3)0125	17.0	8	0.125	1.15
100	E	TR3E107(1)025(2)0300	35.0	10	0.300	0.74
100	E	TR3E107(1)025(2)0250	35.0	10	0.250	0.81
100	W	TR3W107(1)025(3)0200	25.0	15	0.200	1.12
100	W	TR3W107(1)025(3)0150	25.0	15	0.150	1.29
100	W	TR3W107(1)025(3)0100	25.0	15	0.100	1.58

Note

- Part number definitions:
 - (1) Capacitance tolerance codes: K, M
 - (2) Terminations and packaging codes: C, D, E, F, V, U, T, W
 - (3) Lead (Pb)-free terminations and packaging codes: C, D, V, U. Except: for case W, 7" reel is available only, codes C and V (dry pack option is recommended)



STANDARD RATINGS						
CAPACITANCE (μ F)	CASE CODE	PART NUMBER	MAX. DCL AT +25 °C (μ A)	MAX. DF AT +25 °C 120 Hz (%)	MAX. ESR AT +25 °C 100 kHz (Ω)	MAX. RIPPLE 100 kHz I_{RMS} (A)
35 V_{DC} AT +85 °C; 23 V_{DC} AT +125 °C						
0.22	A	TR3A224(1)035(2)6000	0.5	4	6.000	0.11
0.33	A	TR3A334(1)035(2)6000	0.5	4	6.000	0.11
0.47	A	TR3A474(1)035(2)4000	0.5	4	4.000	0.14
0.47	B	TR3B474(1)035(2)4000	0.5	6	4.000	0.15
0.68	A	TR3A684(1)035(2)6000	0.5	4	6.000	0.11
0.68	A	TR3A684(1)035(2)4000	0.5	4	4.000	0.14
1.0	A	TR3A105(1)035(2)6000	0.5	4	6.000	0.11
1.0	A	TR3A105(1)035(2)4000	0.5	4	4.000	0.14
1.0	A	TR3A105(1)035(2)3000	0.5	4	3.000	0.16
1.0	B	TR3B105(1)035(2)2000	0.5	4	2.000	0.21
1.5	B	TR3B155(1)035(2)3000	0.5	6	3.000	0.17
1.5	B	TR3B155(1)035(2)2000	0.5	6	2.000	0.21
1.5	C	TR3C155(1)035(2)2500	0.5	6	2.500	0.21
1.5	C	TR3C155(1)035(2)0900	0.5	6	0.900	0.35
2.2	B	TR3B225(1)035(2)2500	0.8	6	2.500	0.18
2.2	B	TR3B225(1)035(2)2000	0.8	6	2.000	0.21
2.2	B	TR3B225(1)035(2)1500	0.8	6	1.500	0.24
2.2	C	TR3C225(1)035(2)1500	0.8	6	1.500	0.27
2.2	C	TR3C225(1)035(2)0900	0.8	6	0.900	0.35
3.3	B	TR3B335(1)035(2)1500	1.2	6	1.500	0.24
3.3	B	TR3B335(1)035(2)1000	1.2	6	1.000	0.29
3.3	C	TR3C335(1)035(2)0800	1.2	6	0.800	0.37
3.3	C	TR3C335(1)035(2)0700	1.2	6	0.700	0.40
3.3	C	TR3C335(1)035(2)0600	1.2	6	0.600	0.43
4.7	B	TR3B475(1)035(2)1500	1.6	6	1.500	0.24
4.7	B	TR3B475(1)035(2)1000	1.6	6	1.000	0.29
4.7	B	TR3B475(1)035(2)0700	1.6	6	0.700	0.35
4.7	C	TR3C475(1)035(2)0700	1.6	6	0.700	0.40
4.7	C	TR3C475(1)035(2)0600	1.6	6	0.600	0.43
4.7	C	TR3C475(1)035(2)0500	1.6	6	0.500	0.47
4.7	D	TR3D475(1)035(2)0700	1.6	6	0.700	0.46
6.8	C	TR3C685(1)035(2)0900	2.4	6	0.900	0.35
6.8	C	TR3C685(1)035(2)0475	2.4	6	0.475	0.48
6.8	D	TR3D685(1)035(2)0500	2.4	6	0.500	0.55
6.8	D	TR3D685(1)035(2)0400	2.4	6	0.400	0.61
6.8	D	TR3D685(1)035(2)0300	2.4	6	0.300	0.71
6.8	E	TR3E685(1)035(2)0300	2.4	4	0.300	0.74
10	C	TR3C106(1)035(2)1200	3.5	6	1.200	0.30
10	C	TR3C106(1)035(2)0450	3.5	6	0.450	0.49
10	D	TR3D106(1)035(2)0400	3.5	6	0.400	0.61
10	D	TR3D106(1)035(2)0300	3.5	6	0.300	0.71
10	D	TR3D106(1)035(2)0260	3.5	6	0.260	0.76
10	D	TR3D106(1)035(2)0250	3.5	6	0.250	0.77
10	D	TR3D106(1)035(2)0200	3.5	6	0.200	0.87
10	D	TR3D106(1)035(3)0135	3.5	6	0.135	1.05
10	D	TR3D106(1)035(3)0125	3.5	6	0.125	1.10
10	E	TR3E106(1)035(2)0250	3.5	6	0.250	0.81
10	E	TR3E106(1)035(2)0200	3.5	6	0.200	0.91
15	C	TR3C156(1)035(2)0600	5.3	6	0.600	0.43

Note

- Part number definitions:
 - Capacitance tolerance codes: K, M
 - Terminations and packaging codes: C, D, E, F, V, U, T, W
 - Lead (Pb)-free terminations and packaging codes: C, D, V, U. Except: for case W, 7" reel is available only, codes C and V (dry pack option is recommended)



STANDARD RATINGS						
CAPACITANCE (μ F)	CASE CODE	PART NUMBER	MAX. DCL AT +25 °C (μ A)	MAX. DF AT +25 °C 120 Hz (%)	MAX. ESR AT +25 °C 100 kHz (Ω)	MAX. RIPPLE 100 kHz I_{RMS} (A)
35 V_{DC} AT +85 °C; 23 V_{DC} AT +125 °C						
15	C	TR3C156(1)035(2)0400	5.3	6	0.400	0.52
15	D	TR3D156(1)035(2)0350	5.3	6	0.350	0.65
15	D	TR3D156(1)035(2)0300	5.3	6	0.300	0.71
15	D	TR3D156(1)035(2)0260	5.3	6	0.260	0.76
15	D	TR3D156(1)035(2)0225	5.3	6	0.225	0.82
15	D	TR3D156(1)035(2)0200	5.3	6	0.200	0.87
15	D	TR3D156(1)035(2)0150	5.3	6	0.150	1.00
15	E	TR3E156(1)035(2)0300	5.3	6	0.300	0.74
15	E	TR3E156(1)035(2)0225	5.3	6	0.225	0.86
15	E	TR3E156(1)035(2)0200	5.3	6	0.200	0.91
15	E	TR3E156(1)035(2)0150	5.3	6	0.150	1.05
22	D	TR3D226(1)035(2)0400	7.7	6	0.400	0.61
22	D	TR3D226(1)035(2)0300	7.7	6	0.300	0.71
22	D	TR3D226(1)035(2)0275	7.7	6	0.275	0.74
22	D	TR3D226(1)035(2)0250	7.7	6	0.250	0.77
22	D	TR3D226(1)035(2)0200	7.7	6	0.200	0.87
22	E	TR3E226(1)035(2)0300	7.7	6	0.300	0.74
22	E	TR3E226(1)035(2)0275	7.7	6	0.275	0.77
22	E	TR3E226(1)035(2)0260	7.7	6	0.260	0.80
22	E	TR3E226(1)035(2)0200	7.7	6	0.200	0.91
33	D	TR3D336(1)035(2)0400	11.6	6	0.400	0.61
33	D	TR3D336(1)035(3)0250	11.6	6	0.250	0.77
33	E	TR3E336(1)035(2)0400	11.6	6	0.400	0.64
33	E	TR3E336(1)035(3)0250	11.6	6	0.250	0.81
47	E	TR3E476(1)035(2)0400	20.0	10	0.400	0.64
47	E	TR3E476(1)035(3)0200	20.0	10	0.200	0.91
50 V_{DC} AT +85 °C; 33 V_{DC} AT +125 °C						
0.15	A	TR3A154(1)050(2)10R0	0.5	4	10.000	0.09
0.22	A	TR3A224(1)050(2)10R0	0.5	4	10.000	0.09
0.33	A	TR3A334(1)050(2)7000	0.5	4	7.000	0.10
0.47	B	TR3B474(1)050(2)6000	0.5	4	6.000	0.12
0.47	C	TR3C474(1)050(2)2300	0.5	4	2.300	0.22
1.0	B	TR3B105(1)050(2)4000	0.5	4	4.000	0.15
1.0	B	TR3B105(1)050(2)2000	0.5	4	2.000	0.21
1.0	C	TR3C105(1)050(2)1600	0.5	4	1.600	0.26
1.5	B	TR3B155(1)050(2)2000	0.8	6	2.000	0.21
1.5	C	TR3C155(1)050(2)1500	0.8	6	1.500	0.27
2.2	B	TR3B225(1)050(2)2000	1.1	6	2.000	0.21
2.2	C	TR3C225(1)050(2)1500	1.1	6	1.500	0.27
2.2	D	TR3D225(1)050(2)0800	1.1	6	0.800	0.43
3.3	C	TR3C335(1)050(2)1500	1.7	6	1.500	0.27
3.3	D	TR3D335(1)050(2)0800	1.7	6	0.800	0.43
4.7	C	TR3C475(1)050(2)1000	2.4	6	1.000	0.33
4.7	C	TR3C475(1)050(2)0700	2.4	6	0.700	0.40
4.7	C	TR3C475(1)050(2)0500	2.4	6	0.500	0.47
4.7	D	TR3D475(1)050(2)0700	2.4	6	0.700	0.46
4.7	D	TR3D475(1)050(2)0600	2.4	6	0.600	0.50
4.7	D	TR3D475(1)050(2)0500	2.4	6	0.500	0.55
4.7	D	TR3D475(1)050(2)0300	2.4	6	0.300	0.71
4.7	E	TR3E475(1)050(2)0600	2.4	4	0.600	0.52
4.7	E	TR3E475(1)050(2)0300	2.4	4	0.300	0.74

Note

- Part number definitions:
 - (1) Capacitance tolerance codes: K, M
 - (2) Terminations and packaging codes: C, D, E, F, V, U, T, W
 - (3) Lead (Pb)-free terminations and packaging codes: C, D, V, U. Except: for case W, 7" reel is available only, codes C and V (dry pack option is recommended)



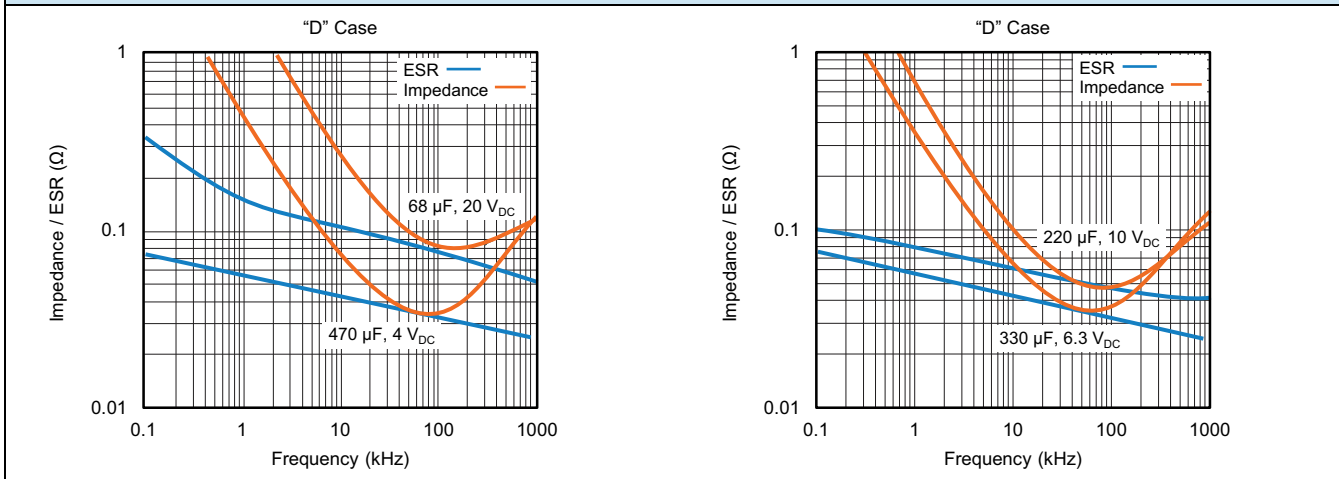
STANDARD RATINGS						
CAPACITANCE (μ F)	CASE CODE	PART NUMBER	MAX. DCL AT +25 °C (μ A)	MAX. DF AT +25 °C 120 Hz (%)	MAX. ESR AT +25 °C 100 kHz (Ω)	MAX. RIPPLE 100 kHz I_{RMS} (A)
50 V_{DC} AT +85 °C; 33 V_{DC} AT +125 °C						
6.8	D	TR3D685(1)050(2)0700	3.4	6	0.700	0.46
6.8	D	TR3D685(1)050(2)0600	3.4	6	0.600	0.50
6.8	D	TR3D685(1)050(2)0500	3.4	6	0.500	0.55
6.8	D	TR3D685(1)050(2)0300	3.4	6	0.300	0.71
6.8	E	TR3E685(1)050(2)0550	3.4	6	0.550	0.55
6.8	E	TR3E685(1)050(2)0500	3.4	6	0.500	0.57
10	D	TR3D106(1)050(2)0700	5.0	6	0.700	0.46
10	D	TR3D106(1)050(2)0550	5.0	6	0.550	0.52
10	D	TR3D106(1)050(2)0450	5.0	6	0.450	0.58
10	E	TR3E106(1)050(2)0700	5.0	6	0.700	0.49
10	E	TR3E106(1)050(2)0550	5.0	6	0.550	0.55
10	E	TR3E106(1)050(2)0500	5.0	6	0.500	0.57
10	E	TR3E106(1)050(2)0400	5.0	6	0.400	0.64
10	E	TR3E106(1)050(2)0300	5.0	6	0.300	0.74
15	E	TR3E156(1)050(2)0400	7.5	6	0.400	0.64
15	E	TR3E156(1)050(3)0300	7.5	6	0.300	0.74
15	E	TR3E156M050(2)0250	7.5	6	0.250	0.81
15	E	TR3E156M050(3)0200	7.5	6	0.200	0.91
63 V_{DC} AT +85 °C; 40 V_{DC} AT +125 °C						
3.3	D	TR3D335(1)063(2)1000	2.1	6	1.000	0.39
3.3	D	TR3D335(1)063(2)0800	2.1	6	0.800	0.43
4.7	D	TR3D475(1)063(2)0700	3.0	6	0.700	0.46
4.7	D	TR3D475(1)063(2)0500	3.0	6	0.500	0.55
10	E	TR3E106(1)063(2)0600	6.3	6	0.600	0.52
75 V_{DC} AT +85 °C; 50 V_{DC} AT +125 °C						
1.0	D	TR3D105(1)075(2)3000	0.8	6	3.000	0.22
1.0	D	TR3D105(1)075(2)1500	0.8	6	1.500	0.32
1.5	B	TR3B155(1)075(2)2000	1.1	6	2.000	0.21
1.5	C	TR3C155(1)075(2)2000	1.1	6	2.000	0.23
1.5	D	TR3D155(1)075(2)2000	1.1	6	2.000	0.27
1.5	D	TR3D155(1)075(2)1000	1.1	6	1.000	0.27
2.2	D	TR3D225(1)075(2)1500	1.7	6	1.500	0.32
3.3	D	TR3D335(1)075(2)1200	2.5	6	1.200	0.35
3.3	D	TR3D335(1)075(2)1000	2.5	6	1.000	0.39
3.3	D	TR3D335(1)075(2)0800	2.5	6	0.800	0.43
4.7	E	TR3E475(1)075(2)1500	3.5	10	1.500	0.26

Note

- Part number definitions:
 - Capacitance tolerance codes: K, M
 - Terminations and packaging codes: C, D, E, F, V, U, T, W
 - Lead (Pb)-free terminations and packaging codes: C, D, V, U. Except: for case W, 7" reel is available only, codes C and V (dry pack option is recommended)



TYPICAL CURVES AT +25 °C, IMPEDANCE AND ESR VS. FREQUENCY



POWER DISSIPATION

CASE CODE	MAXIMUM PERMISSIBLE POWER DISSIPATION AT +25 °C (W) IN FREE AIR
A	0.075
B	0.085
C	0.110
D	0.150
E	0.165
W	0.250

STANDARD PACKAGING QUANTITY

CASE CODE	UNITS PER REEL	
	7" REEL	13" REEL
A	2000	9000
B	2000	8000
C	500	3000
D	500	2500
E	400	1500
W	500	n/a

PRODUCT INFORMATION

Guide for Molded Tantalum Capacitors	www.vishay.com/doc?40074
Pad Dimensions	
Packaging Dimensions	
Moisture Sensitivity (MSL)	
SELECTOR GUIDES	
Solid Tantalum Selector Guide	www.vishay.com/doc?49053
Solid Tantalum Chip Capacitors	www.vishay.com/doc?40091
FAQ	
Frequently Asked Questions	www.vishay.com/doc?40110



Guide for Molded Tantalum Capacitors

INTRODUCTION

Tantalum electrolytic capacitors are the preferred choice in applications where volumetric efficiency, stable electrical parameters, high reliability, and long service life are primary considerations. The stability and resistance to elevated temperatures of the tantalum / tantalum oxide / manganese dioxide system make solid tantalum capacitors an appropriate choice for today's surface-mount assembly technology.

Vishay Sprague has been a pioneer and leader in this field, producing a large variety of tantalum capacitor types for consumer, industrial, automotive, military, and aerospace electronic applications.

Tantalum is not found in its pure state. Rather, it is commonly found in a number of oxide minerals, often in combination with Columbium ore. This combination is known as "tantalite" when its contents are more than one-half tantalum. Important sources of tantalite include Australia, Brazil, Canada, China, and several African countries. Synthetic tantalite concentrates produced from tin slags in Thailand, Malaysia, and Brazil are also a significant raw material for tantalum production.

Electronic applications, and particularly capacitors, consume the largest share of world tantalum production. Other important applications for tantalum include cutting tools (tantalum carbide), high temperature super alloys, chemical processing equipment, medical implants, and military ordnance.

Vishay Sprague is a major user of tantalum materials in the form of powder and wire for capacitor elements and rod and sheet for high temperature vacuum processing.

THE BASICS OF TANTALUM CAPACITORS

Most metals form crystalline oxides which are non-protecting, such as rust on iron or black oxide on copper. A few metals form dense, stable, tightly adhering, electrically insulating oxides. These are the so-called "valve" metals and include titanium, zirconium, niobium, tantalum, hafnium, and aluminum. Only a few of these permit the accurate control of oxide thickness by electrochemical means. Of these, the most valuable for the electronics industry are aluminum and tantalum.

Capacitors are basic to all kinds of electrical equipment, from radios and television sets to missile controls and automobile ignitions. Their function is to store an electrical charge for later use.

Capacitors consist of two conducting surfaces, usually metal plates, whose function is to conduct electricity. They are separated by an insulating material or dielectric. The dielectric used in all tantalum electrolytic capacitors is tantalum pentoxide.

Tantalum pentoxide compound possesses high-dielectric strength and a high-dielectric constant. As capacitors are being manufactured, a film of tantalum pentoxide is applied to their electrodes by means of an electrolytic process. The film is applied in various thicknesses and at various voltages and although transparent to begin with, it takes on different colors as light refracts through it. This coloring occurs on the tantalum electrodes of all types of tantalum capacitors.

Rating for rating, tantalum capacitors tend to have as much as three times better capacitance / volume efficiency than aluminum electrolytic capacitors. An approximation of the capacitance / volume efficiency of other types of capacitors may be inferred from the following table, which shows the dielectric constant ranges of the various materials used in each type. Note that tantalum pentoxide has a dielectric constant of 26, some three times greater than that of aluminum oxide. This, in addition to the fact that extremely thin films can be deposited during the electrolytic process mentioned earlier, makes the tantalum capacitor extremely efficient with respect to the number of microfarads available per unit volume. The capacitance of any capacitor is determined by the surface area of the two conducting plates, the distance between the plates, and the dielectric constant of the insulating material between the plates.

COMPARISON OF CAPACITOR DIELECTRIC CONSTANTS

DIELECTRIC	ϵ DIELECTRIC CONSTANT
Air or vacuum	1.0
Paper	2.0 to 6.0
Plastic	2.1 to 6.0
Mineral oil	2.2 to 2.3
Silicone oil	2.7 to 2.8
Quartz	3.8 to 4.4
Glass	4.8 to 8.0
Porcelain	5.1 to 5.9
Mica	5.4 to 8.7
Aluminum oxide	8.4
Tantalum pentoxide	26
Ceramic	12 to 400K

In the tantalum electrolytic capacitor, the distance between the plates is very small since it is only the thickness of the tantalum pentoxide film. As the dielectric constant of the tantalum pentoxide is high, the capacitance of a tantalum capacitor is high if the area of the plates is large:

$$C = \frac{\epsilon A}{t}$$

where

C = capacitance

ϵ = dielectric constant

A = surface area of the dielectric

t = thickness of the dielectric

Tantalum capacitors contain either liquid or solid electrolytes. In solid electrolyte capacitors, a dry material (manganese dioxide) forms the cathode plate. A tantalum lead is embedded in or welded to the pellet, which is in turn connected to a termination or lead wire. The drawings show the construction details of the surface-mount types of tantalum capacitors shown in this catalog.



SOLID ELECTROLYTE TANTALUM CAPACITORS

Solid electrolyte capacitors contain manganese dioxide, which is formed on the tantalum pentoxide dielectric layer by impregnating the pellet with a solution of manganous nitrate. The pellet is then heated in an oven, and the manganous nitrate is converted to manganese dioxide.

The pellet is next coated with graphite, followed by a layer of metallic silver, which provides a conductive surface between the pellet and the leadframe.

Molded Chip tantalum capacitor encases the element in plastic resins, such as epoxy materials. The molding compound has been selected to meet the requirements of UL 94 V-0 and outgassing requirements of ASTM E-595. After assembly, the capacitors are tested and inspected to assure long life and reliability. It offers excellent reliability and high stability for consumer and commercial electronics with the added feature of low cost

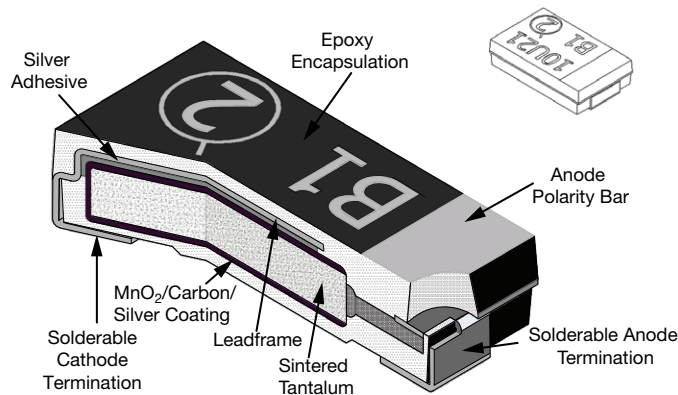
Surface-mount designs of “solid tantalum” capacitors use lead frames or lead frameless designs as shown in the accompanying drawings.

TANTALUM CAPACITORS FOR ALL DESIGN CONSIDERATIONS

Solid electrolyte designs are the least expensive for a given rating and are used in many applications where their very small size for a given unit of capacitance is of importance. They will typically withstand up to about 10 % of the rated DC working voltage in a reverse direction. Also important are their good low temperature performance characteristics and freedom from corrosive electrolytes.

Vishay Sprague patented the original solid electrolyte capacitors and was the first to market them in 1956. Vishay Sprague has the broadest line of tantalum capacitors and has continued its position of leadership in this field. Data sheets covering the various types and styles of Vishay Sprague capacitors for consumer and entertainment electronics, industry, and military applications are available where detailed performance characteristics must be specified.

MOLDED CHIP CAPACITOR





COMMERCIAL PRODUCTS

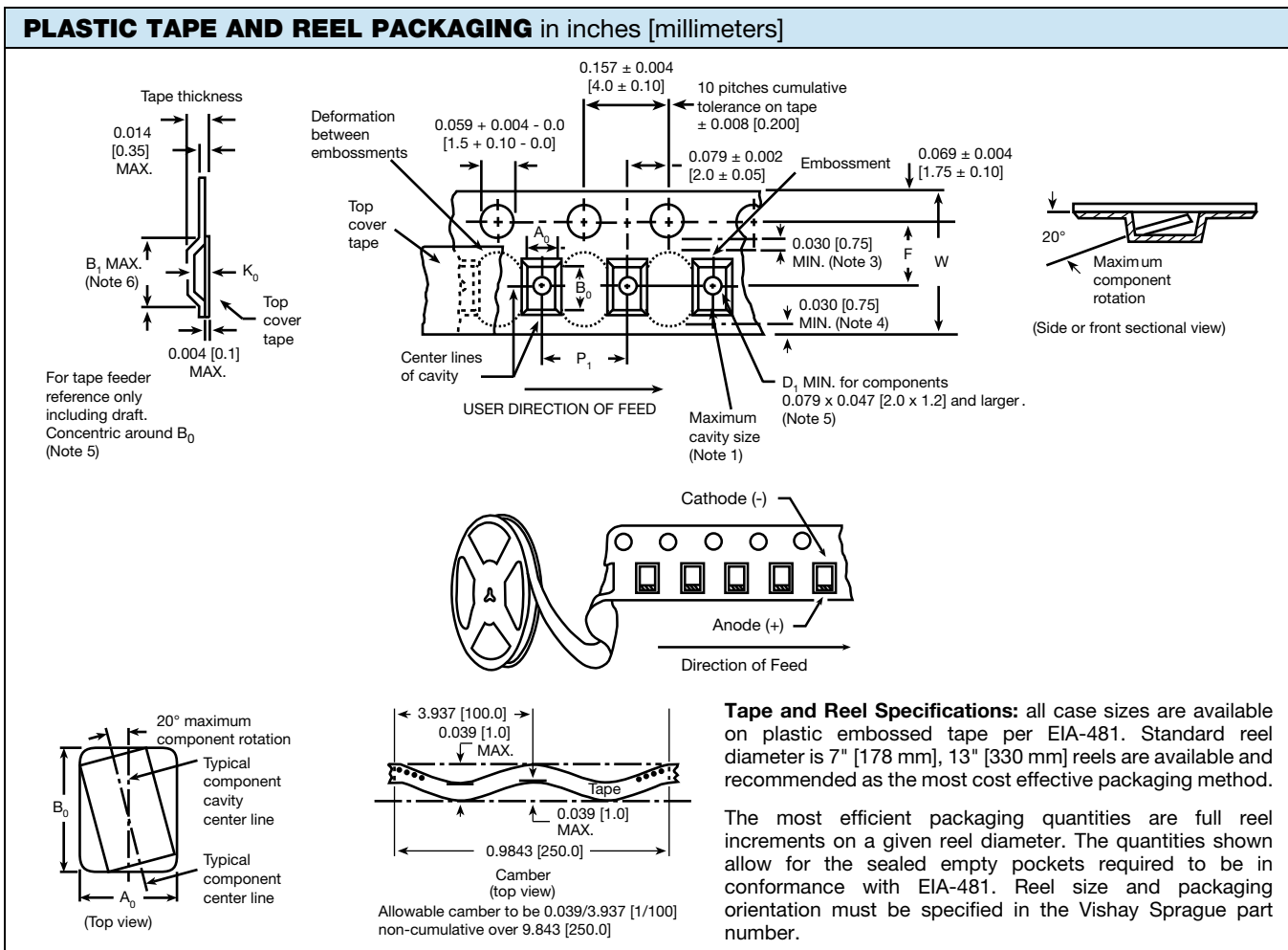
SOLID TANTALUM CAPACITORS - MOLDED CASE						
SERIES	293D	793DX-CTC3-CTC4	593D	TR3	TP3	TL3
PRODUCT IMAGE						
TYPE	Surface-mount TANTAMOUNT™, molded case					
FEATURES	Standard industrial grade	CECC approved	Low ESR	Low ESR	High performance, automotive grade	Very low DCL
TEMPERATURE RANGE	-55 °C to +125 °C					
CAPACITANCE RANGE	0.1 µF to 1000 µF	0.1 µF to 100 µF	1 µF to 470 µF	0.47 µF to 1000 µF	0.1 µF to 470 µF	0.1 µF to 470 µF
VOLTAGE RANGE	4 V to 75 V	4 V to 50 V	4 V to 50 V	4 V to 75 V	4 V to 50 V	4 V to 50 V
CAPACITANCE TOLERANCE	± 10 %, ± 20 %					
LEAKAGE CURRENT	0.01 CV or 0.5 µA, whichever is greater					0.005 CV or 0.25 µA, whichever is greater
DISSIPATION FACTOR	4 % to 30 %	4 % to 6 %	4 % to 15 %	4 % to 30 %	4 % to 15 %	4 % to 15 %
CASE CODES	A, B, C, D, E	A, B, C, D	A, B, C, D, E	A, B, C, D, E, W	A, B, C, D, E	A, B, C, D, E
TERMINATION	100 % matte tin standard, tin / lead available					

SOLID TANTALUM CAPACITORS - MOLDED CASE				
SERIES	TX3	TH3	TH4	TH5
PRODUCT IMAGE				
TYPE	Surface-mount TANTAMOUNT™, molded case			
FEATURES	E-detectors	High temperature +150 °C, automotive grade	High temperature +175 °C, automotive grade	Very high temperature +200 °C
TEMPERATURE RANGE	-55 °C to +125 °C	-55 °C to +150 °C	-55 °C to +175 °C	-55 °C to +200 °C
CAPACITANCE RANGE	10 µF to 100 µF	0.33 µF to 220 µF	10 µF to 100 µF	4.7 µF to 100 µF
VOLTAGE RANGE	16 V to 25 V	6.3 V to 50 V	6.3 V to 35 V	5 V to 24 V
CAPACITANCE TOLERANCE	± 10 %, ± 20 %			
LEAKAGE CURRENT	0.005 CV	0.01 CV or 0.5 µA, whichever is greater		
DISSIPATION FACTOR	6 % to 20 %	4 % to 8 %	4.5 % to 8 %	6 % to 10 %
CASE CODES	B, C	A, B, C, D, E	B, C, D, E	D, E
TERMINATION	100 % matte tin	100 % matte tin standard, tin / lead and gold plated available	100 % matte tin	Gold plated



HIGH RELIABILITY PRODUCTS

SOLID TANTALUM CAPACITORS - MOLDED CASE				
SERIES	TM3	T83	CWR11	95158
PRODUCT IMAGE				
TYPE	TANTAMOUNT™, molded case, hi-rel.	TANTAMOUNT™, molded case, hi-rel. COTS	TANTAMOUNT™, molded case, DLA approved	
FEATURES	High reliability, for medical Instruments	High reliability, standard and low ESR	MIL-PRF-55365/8 qualified	Low ESR
TEMPERATURE RANGE	-55 °C to +125 °C			
CAPACITANCE RANGE	1 µF to 220 µF	0.1 µF to 470 µF	0.1 µF to 100 µF	4.7 µF to 220 µF
VOLTAGE RANGE	4 V to 20 V	4 V to 63 V	4 V to 50 V	
CAPACITANCE TOLERANCE	± 10 %, ± 20 %		± 5 %, ± 10 %, ± 20 %	± 10 %, ± 20 %
LEAKAGE CURRENT	0.005 CV or 0.25 µA, whichever is greater	0.01 CV or 0.5 µA, whichever is greater		
DISSIPATION FACTOR	4 % to 8 %	4 % to 15 %	4 % to 6 %	4 % to 12 %
CASE CODES	A, B, C, D, E	A, B, C, D, E	A, B, C, D	C, D, E
TERMINATION	100 % matte tin; tin / lead	100 % matte tin; tin / lead; tin / lead solder fused	Tin / lead; tin / lead solder fused	Tin / lead solder plated; gold plated



Notes

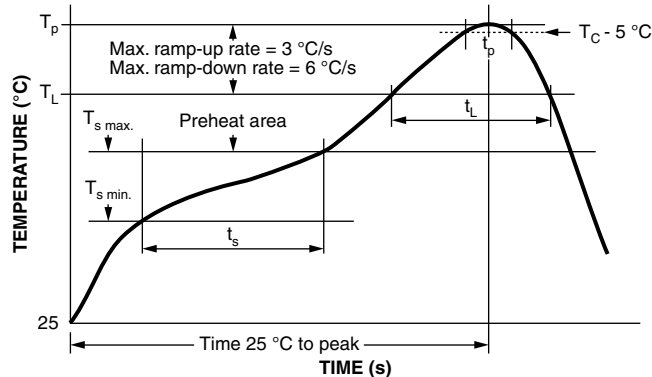
- Metric dimensions will govern. Dimensions in inches are rounded and for reference only
- A_0, B_0, K_0 are determined by the maximum dimensions to the ends of the terminals extending from the component body and / or the body dimensions of the component. The clearance between the ends of the terminals or body of the component to the sides and depth of the cavity (A_0, B_0, K_0) must be within 0.002" (0.05 mm) minimum and 0.020" (0.50 mm) maximum. The clearance allowed must also prevent rotation of the component within the cavity of not more than 20°
- Tape with components shall pass around radius "R" without damage. The minimum trailer length may require additional length to provide "R" minimum for 12 mm embossed tape for reels with hub diameters approaching N minimum
- This dimension is the flat area from the edge of the sprocket hole to either outward deformation of the carrier tape between the embossed cavities or to the edge of the cavity whichever is less
- This dimension is the flat area from the edge of the carrier tape opposite the sprocket holes to either the outward deformation of the carrier tape between the embossed cavity or to the edge of the cavity whichever is less
- The embossed hole location shall be measured from the sprocket hole controlling the location of the embossment. Dimensions of embossment location shall be applied independent of each other
- B_1 dimension is a reference dimension tape feeder clearance only

CASE CODE	TAPE SIZE	B_1 (MAX.)	D_1 (MIN.)	F	K_0 (MAX.)	P_1	W
MOLDED CHIP CAPACITORS; ALL TYPES							
A	8 mm	0.165	0.039	0.138 ± 0.002	0.094	0.157 ± 0.004	0.315 ± 0.012
B		[4.2]	[1.0]	[3.5 ± 0.05]	[2.4]	[4.0 ± 1.0]	[8.0 ± 0.30]
C							
D	12 mm	0.32	0.059	0.217 ± 0.00	0.177	0.315 ± 0.004	0.472 ± 0.012
E		[8.2]	[1.5]	[5.5 ± 0.05]	[4.5]	[8.0 ± 1.0]	[12.0 ± 0.30]
W							



RECOMMENDED REFLOW PROFILES

Capacitors should withstand reflow profile as per J-STD-020 standard, three cycles.

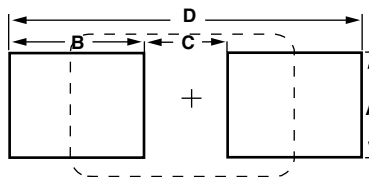


PROFILE FEATURE	SnPb EUTECTIC ASSEMBLY	LEAD (Pb)-FREE ASSEMBLY
Preheat / soak		
Temperature min. ($T_{s \text{ min.}}$)	100 °C	150 °C
Temperature max. ($T_{s \text{ max.}}$)	150 °C	200 °C
Time (t_s) from ($T_{s \text{ min.}}$ to $T_{s \text{ max.}}$)	60 s to 120 s	60 s to 120 s
Ramp-up		
Ramp-up rate (T_L to T_p)	3 °C/s max.	3 °C/s max.
Liquidus temperature (T_L)	183 °C	217 °C
Time (t_L) maintained above T_L	60 s to 150 s	60 s to 150 s
Peak package body temperature (T_p)	Depends on case size - see table below	
Time (t_p) within 5 °C of the specified classification temperature (T_C)	20 s	30 s
Time 25 °C to peak temperature	6 min max.	8 min max.
Ramp-down		
Ramp-down rate (T_p to T_L)	6 °C/s max.	6 °C/s max.

PEAK PACKAGE BODY TEMPERATURE (T_p)

CASE CODE	PEAK PACKAGE BODY TEMPERATURE (T_p)	
	SnPb EUTECTIC PROCESS	LEAD (Pb)-FREE PROCESS
A, B, C	235 °C	260 °C
D, E, W	220 °C	250 °C

PAD DIMENSIONS in inches [millimeters]



CASE CODE	A (MIN.)	B (NOM.)	C (NOM.)	D (NOM.)
MOLDED CHIP CAPACITORS, ALL TYPES				
A	0.071 [1.80]	0.067 [1.70]	0.053 [1.35]	0.187 [4.75]
B	0.118 [3.00]	0.071 [1.80]	0.065 [1.65]	0.207 [5.25]
C	0.118 [3.00]	0.094 [2.40]	0.118 [3.00]	0.307 [7.80]
D	0.157 [4.00]	0.098 [2.50]	0.150 [3.80]	0.346 [8.80]
E	0.157 [4.00]	0.098 [2.50]	0.150 [3.80]	0.346 [8.80]
W	0.185 [4.70]	0.098 [2.50]	0.150 [3.80]	0.346 [8.80]



GUIDE TO APPLICATION

1. **AC Ripple Current:** the maximum allowable ripple current shall be determined from the formula:

$$I_{RMS} = \sqrt{\frac{P}{R_{ESR}}}$$

where,

P = power dissipation in W at +25 °C as given in the tables in the product datasheets (Power Dissipation).

R_{ESR} = the capacitor equivalent series resistance at the specified frequency

2. **AC Ripple Voltage:** the maximum allowable ripple voltage shall be determined from the formula:

$$V_{RMS} = I_{RMS} \times Z$$

or, from the formula:

$$V_{RMS} = Z \sqrt{\frac{P}{R_{ESR}}}$$

where,

P = power dissipation in W at +25 °C as given in the tables in the product datasheets (Power Dissipation).

R_{ESR} = the capacitor equivalent series resistance at the specified frequency

Z = the capacitor impedance at the specified frequency

- 2.1 The sum of the peak AC voltage plus the applied DC voltage shall not exceed the DC voltage rating of the capacitor.
- 2.2 The sum of the negative peak AC voltage plus the applied DC voltage shall not allow a voltage reversal exceeding 10 % of the DC working voltage at +25 °C.
3. **Reverse Voltage:** solid tantalum capacitors are not intended for use with reverse voltage applied. However, they have been shown to be capable of withstanding momentary reverse voltage peaks of up to 10 % of the DC rating at 25 °C and 5 % of the DC rating at +85 °C.
4. **Temperature Derating:** if these capacitors are to be operated at temperatures above +25 °C, the permissible RMS ripple current shall be calculated using the derating factors as shown:

TEMPERATURE (°C)	DERATING FACTOR
+25	1.0
+85	0.9
+125	0.4
+150 ⁽¹⁾	0.3
+175 ⁽¹⁾	0.2
+200 ⁽¹⁾	0.1

Note

⁽¹⁾ Applicable for dedicated high temperature product series

5. **Power Dissipation:** power dissipation will be affected by the heat sinking capability of the mounting surface. Non-sinusoidal ripple current may produce heating effects which differ from those shown. It is important that the equivalent I_{RMS} value

be established when calculating permissible operating levels. (Power dissipation calculated using +25 °C temperature rise).

6. **Printed Circuit Board Materials:** molded capacitors are compatible with commonly used printed circuit board materials (alumina substrates, FR4, FR5, G10, PTFE-fluorocarbon and porcelainized steel).
7. **Attachment:**
- 7.1 **Solder Paste:** the recommended thickness of the solder paste after application is 0.007" ± 0.001" [0.178 mm ± 0.025 mm]. Care should be exercised in selecting the solder paste. The metal purity should be as high as practical. The flux (in the paste) must be active enough to remove the oxides formed on the metallization prior to the exposure to soldering heat. In practice this can be aided by extending the solder preheat time at temperatures below the liquidous state of the solder.
- 7.2 **Soldering:** capacitors can be attached by conventional soldering techniques; vapor phase, convection reflow, infrared reflow, wave soldering, and hot plate methods. The soldering profile charts show recommended time / temperature conditions for soldering. Preheating is recommended. The recommended maximum ramp rate is 3 °C per second. Attachment with a soldering iron is not recommended due to the difficulty of controlling temperature and time at temperature. The soldering iron must never come in contact with the capacitor. For details see www.vishay.com/doc?40214.
- 7.2.1 **Backward and Forward Compatibility:** capacitors with SnPb or 100 % tin termination finishes can be soldered using SnPb or lead (Pb)-free soldering processes.
8. **Cleaning (Flux Removal) After Soldering:** molded capacitors are compatible with all commonly used solvents such as TES, TMS, Prelete, Chloroethane, Terpene and aqueous cleaning media. However, CFC / ODS products are not used in the production of these devices and are not recommended. Solvents containing methylene chloride or other epoxy solvents should be avoided since these will attack the epoxy encapsulation material.
- 8.1 When using ultrasonic cleaning, the board may resonate if the output power is too high. This vibration can cause cracking or a decrease in the adherence of the termination. DO NOT EXCEED 9W/l at 40 kHz for 2 min.
9. **Recommended Mounting Pad Geometries:** proper mounting pad geometries are essential for successful solder connections. These dimensions are highly process sensitive and should be designed to minimize component rework due to unacceptable solder joints. The dimensional configurations shown are the recommended pad geometries for both wave and reflow soldering techniques. These dimensions are intended to be a starting point for circuit board designers and may be fine tuned if necessary based upon the peculiarities of the soldering process and / or circuit board design.



Molded Chip Tantalum Capacitors

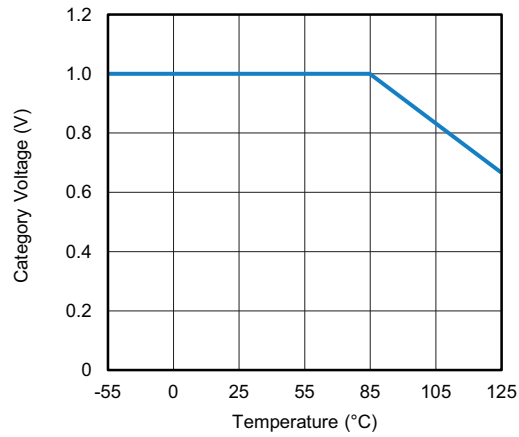
CAPACITOR ELECTRICAL PERFORMANCE CHARACTERISTICS				
ITEM	PERFORMANCE CHARACTERISTICS			
Category temperature range	-55 °C to +85 °C (to +125 °C with voltage derating)			
Capacitance tolerance	± 20 %, ± 10 %. Tested via bridge method, at +25 °C, 120 Hz			
Dissipation factor	Limit per Standard Ratings table. Tested via bridge method, at 25 °C, 120 Hz			
ESR	Limit per Standard Ratings table. Tested via bridge method, at 25 °C, 100 kHz			
Leakage current	After application of rated voltage applied to capacitors for 5 min using a steady source of power with 1 kΩ resistor in series with the capacitor under test, leakage current at 25 °C is not more than 0.01 CV or 0.5 μA, whichever is greater. <i>Note that the leakage current varies with temperature and applied voltage. See graph below for the appropriate adjustment factor.</i>			
Capacitance change by temperature	+20 % max. (at +125 °C) +10 % max. (at +85 °C) -10 % max. (at -55 °C)			
Reverse voltage	Capacitors are capable of withstanding peak voltages in the reverse direction equal to: 10 % of the DC rating at +25 °C 5 % of the DC rating at +85 °C Vishay does not recommend intentional or repetitive application of reverse voltage			
Ripple current	For maximum ripple current values (at 25 °C) refer to relevant datasheet. If capacitors are to be used at temperatures above +25 °C, the permissible RMS ripple current (or voltage) shall be calculated using the derating factors: 1.0 at +25 °C; 0.9 at +85 °C; 0.4 at +125 °C			
Maximum operating and surge voltages vs. temperature	+85 °C		+125 °C	
	RATED VOLTAGE (V)	SURGE VOLTAGE (V)	CATEGORY VOLTAGE (V)	SURGE VOLTAGE (V)
	4	5.2	2.7	3.4
	6.3	8	4	5
	10	13	7	8
	16	20	10	12
	20	26	13	16
	25 ⁽¹⁾	32	17	20
	25 ⁽²⁾	27	17	20
	35 ⁽³⁾	46	23	28
	35 ⁽⁴⁾	42	23	28
	50	65	33	40
50 ⁽⁵⁾	60	33	40	
63	75	42	50	
75 ⁽⁶⁾	75	50	50	
Recommended voltage derating guidelines (below 85 °C) ⁽⁷⁾	VOLTAGE RAIL (V)		CAPACITOR VOLTAGE RATING (V)	
	≤ 3.3		6.3	
	5		10	
	10		20	
	12		25	
	15		35	
	24		50 or series configuration	
	28		63 or series configuration	
≥ 32		75 or series configuration		

Notes

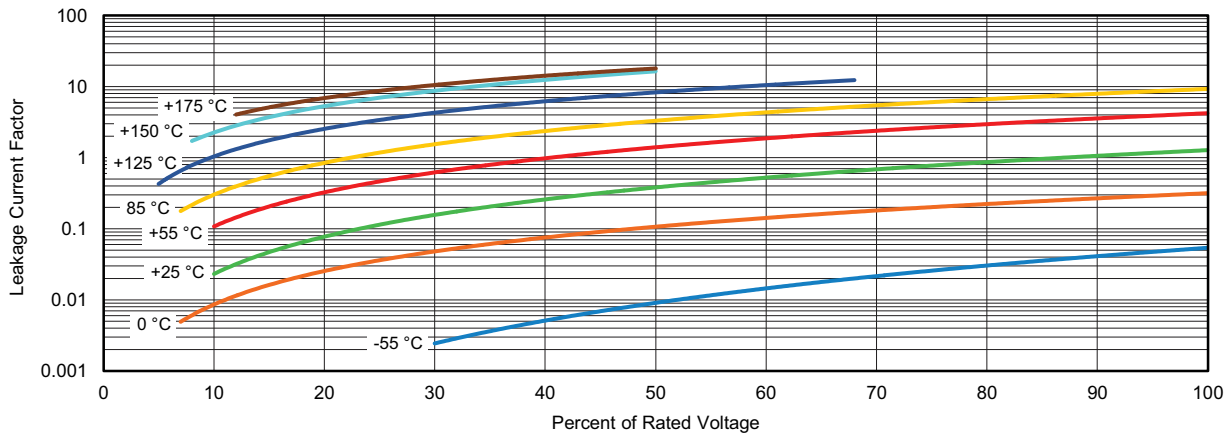
- All information presented in this document reflects typical performance characteristics
 - For more information about recommended voltage derating see: www.vishay.com/doc?40246
- (1) Capacitance values lower than 100 μF
(2) Capacitance values 100 μF and higher
(3) Capacitance values lower than 33 μF
(4) Capacitance values 33 μF and higher
(5) Capacitance values 15 μF and higher
(6) For 293D and TR3 only
(7) For temperatures above +85 °C the same voltage derating ratio is recommended, but with respect to category voltage: up to +85 °C: category voltage = rated voltage; at +125 °C: category voltage = 2/3 of rated voltage, between these temperatures it decreases linearly - see graph below



CATEGORY VOLTAGE VS. TEMPERATURE



TYPICAL LEAKAGE CURRENT TEMPERATURE FACTOR



Note

- At +25 °C, the leakage current shall not exceed the value listed in the Standard Ratings table.
- At +85 °C, the leakage current shall not exceed 10 times the value listed in the Standard Ratings table.
- At +125 °C, the leakage current shall not exceed 12 times the value listed in the Standard Ratings table.
- At +150 °C, the leakage current shall not exceed 15 times the value listed in the Standard Ratings table.
- At +175 °C, the leakage current shall not exceed 18 times the value listed in the Standard Ratings table.



Typical Performance Characteristics

Vishay Sprague

ENVIRONMENTAL PERFORMANCE CHARACTERISTICS			
ITEM	CONDITION	POST TEST PERFORMANCE	
Surge voltage	Post application of surge voltage (as specified in the table above) in series with a 33 Ω resistor at the rate of 30 s ON, 30 s OFF, for 1000 successive test cycles at 85 °C.	Capacitance change Dissipation factor Leakage current	Within ± 10 % of initial value Initial specified limit Initial specified limit
Life test at +85 °C	1000 h application of rated voltage at 85 °C. MIL-STD-202, method 108	Capacitance change Dissipation factor Leakage current	Within -20 % / +10 % of initial value Initial specified limit Shall not exceed 125 % of initial limit
Life test at +125 °C	1000 h application 2/3 of rated voltage at 125 °C. MIL-STD-202, method 108	Capacitance change Dissipation factor Leakage current	Within -20 % / +10 % of initial value Initial specified limit Shall not exceed 125 % of initial limit
Humidity tests	At 60 °C / 90 % RH 1000 h, biased	Capacitance change Dissipation factor Leakage current	Within -10 % / +20 % of initial value Not to exceed 150 % of initial limit Shall not exceed 200 % of initial limit
Thermal shock	MIL-STD-202, method 107, test condition A (-55 °C / +85 °C, for 1000 cycles)	Capacitance change Dissipation factor Leakage current	Within ± 10 % of initial value Initial specified limit Initial specified limit

MECHANICAL PERFORMANCE CHARACTERISTICS			
TEST CONDITION	CONDITION	POST TEST PERFORMANCE	
Terminal strength / shear force test	Apply a pressure load of 17.7 N for 60 s horizontally to the center of capacitor side body.	Capacitance change Dissipation factor Leakage current	Within ± 10 % of initial value Initial specified limit Initial specified limit
		There shall be no mechanical or visual damage to capacitors post-conditioning.	
Vibration	MIL-STD-202, method 204, condition D, 10 Hz to 2000 Hz, 20 g peak, 8 h, at rated voltage	Electrical measurements are not applicable, since the same parts are used for shock (specified pulse) test. There shall be no mechanical or visual damage to capacitors post-conditioning.	
Shock (specified pulse)	MIL-STD-202, method 213, condition I, 100 g peak	Capacitance change Dissipation factor Leakage current	Within ± 10 % of initial value Initial specified limit Initial specified limit
		There shall be no mechanical or visual damage to capacitors post-conditioning.	
Resistance to soldering heat	Recommended reflow profiles temperatures and durations are located within the Capacitor Series Guides MIL-STD-202, method 210, condition B	Capacitance change Dissipation factor Leakage current	Within ± 10 % of initial value Initial specified limit Initial specified limit
		There shall be no mechanical or visual damage to capacitors post-conditioning.	
Solderability and dissolution of metallization	MIL-STD-202, method 208, ANSI/J-STD-002, test B (SnPb) and B1 (lead (Pb)-free). Dissolution of metallization: method D. Does not apply to gold terminations.	There shall be no mechanical or visual damage to capacitors post-conditioning.	
Flammability	Encapsulation materials meet UL 94 V-0 with an oxygen index of 32 %.		



Disclaimer

ALL PRODUCT, PRODUCT SPECIFICATIONS AND DATA ARE SUBJECT TO CHANGE WITHOUT NOTICE TO IMPROVE RELIABILITY, FUNCTION OR DESIGN OR OTHERWISE.

Vishay Intertechnology, Inc., its affiliates, agents, and employees, and all persons acting on its or their behalf (collectively, "Vishay"), disclaim any and all liability for any errors, inaccuracies or incompleteness contained in any datasheet or in any other disclosure relating to any product.

Vishay makes no warranty, representation or guarantee regarding the suitability of the products for any particular purpose or the continuing production of any product. To the maximum extent permitted by applicable law, Vishay disclaims (i) any and all liability arising out of the application or use of any product, (ii) any and all liability, including without limitation special, consequential or incidental damages, and (iii) any and all implied warranties, including warranties of fitness for particular purpose, non-infringement and merchantability.

Statements regarding the suitability of products for certain types of applications are based on Vishay's knowledge of typical requirements that are often placed on Vishay products in generic applications. Such statements are not binding statements about the suitability of products for a particular application. It is the customer's responsibility to validate that a particular product with the properties described in the product specification is suitable for use in a particular application. Parameters provided in datasheets and / or specifications may vary in different applications and performance may vary over time. All operating parameters, including typical parameters, must be validated for each customer application by the customer's technical experts. Product specifications do not expand or otherwise modify Vishay's terms and conditions of purchase, including but not limited to the warranty expressed therein.

Hyperlinks included in this datasheet may direct users to third-party websites. These links are provided as a convenience and for informational purposes only. Inclusion of these hyperlinks does not constitute an endorsement or an approval by Vishay of any of the products, services or opinions of the corporation, organization or individual associated with the third-party website. Vishay disclaims any and all liability and bears no responsibility for the accuracy, legality or content of the third-party website or for that of subsequent links.

Vishay products are not designed for use in life-saving or life-sustaining applications or any application in which the failure of the Vishay product could result in personal injury or death unless specifically qualified in writing by Vishay. Customers using or selling Vishay products not expressly indicated for use in such applications do so at their own risk. Please contact authorized Vishay personnel to obtain written terms and conditions regarding products designed for such applications.

No license, express or implied, by estoppel or otherwise, to any intellectual property rights is granted by this document or by any conduct of Vishay. Product names and markings noted herein may be trademarks of their respective owners.

OUR CERTIFICATE

DiGi provide top-quality products and perfect service for customer worldwide through standardization, technological innovation and continuous improvement. DiGi through third-party certification, we strictly control the quality of products and services. Welcome your RFQ to

Email: Info@DiGi-Electronics.com



Tel: +00 852-30501935

RFQ Email: Info@DiGi-Electronics.com

DiGi is a global authorized distributor of electronic components.