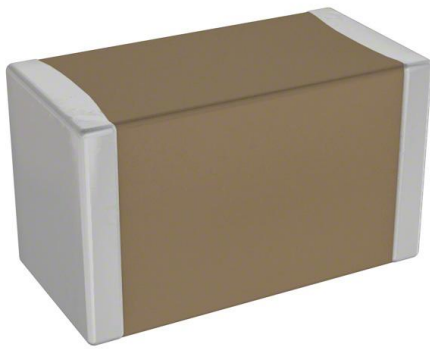


VJ0603Q8R2CFBAI Datasheet

www.digi-electronics.com



<https://www.DiGi-Electronics.com>

DiGi Electronics Part Number	VJ0603Q8R2CFBAI-DG
Manufacturer	Vishay Vitramon
Manufacturer Product Number	VJ0603Q8R2CFBAI
Description	CAP CER 8.2PF 100V 0603 EPOXY
Detailed Description	8.2 pF ±0.25pF 100V Ceramic Capacitor COG, NP0 0603 (1608 Metric)

This model VJ0603Q8R2CFBAI is available at DiGi Electronics.

DiGi Electronics offers a global database of semiconductor and electronic component datasheets.

We welcome your inquiries regarding pricing, lead time, or other product-related questions.

 [Request a Quote](#)

 [Datasheet Search](#)



Tel: +00 852-30501935

RFQ Email: Info@DiGi-Electronics.com

DiGi is a global authorized distributor of electronic components.

Purchase and inquiry

Manufacturer Product Number:

VJ0603Q8R2CFBAI

Series:

VJ High Q

Capacitance:

8.2 pF

Voltage - Rated:

100V

Operating Temperature:

-55°C ~ 150°C

Ratings:

-

Failure Rate:

-

Package / Case:

0603 (1608 Metric)

Height - Seated (Max):

-

Lead Spacing:

-

Manufacturer:

Vishay Vitramon

Product Status:

Obsolete

Tolerance:

±0.25pF

Temperature Coefficient:

COG, NP0

Features:

High Q, Low Loss, Epoxy Mountable

Applications:

RF, Microwave, High Frequency

Mounting Type:

Surface Mount, MLCC, Epoxy

Size / Dimension:

0.063" L x 0.031" W (1.60mm x 0.80mm)

Thickness (Max):

0.036" (0.92mm)

Lead Style:

-

Environmental & Export classification

RoHS Status:

ROHS3 Compliant

ECCN:

EAR99

Moisture Sensitivity Level (MSL):

1 (Unlimited)

HTSUS:

8532.24.0020

OUR CERTIFICATE

DiGi provide top-quality products and perfect service for customer worldwide through standardization, technological innovation and continuous improvement. DiGi through third-party certification, we stricly control the quality of products and services. Welcome your RFQ to

Email: Info@DiGi-Electronics.com



Tel: +00 852-30501935

RFQ Email: Info@DiGi-Electronics.com

DiGi is a global authorized distributor of electronic components.