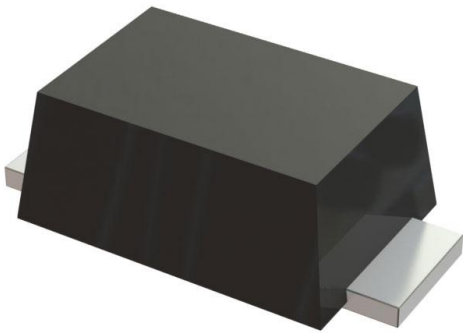


# BZD27C12P-HE3-08 Datasheet

www.digi-electronics.com



<https://www.DiGi-Electronics.com>

DiGi Electronics Part Number	BZD27C12P-HE3-08-DG
Manufacturer	<a href="#">Vishay General Semiconductor - Diodes Division</a>
Manufacturer Product Number	BZD27C12P-HE3-08
Description	DIODE ZENER 12V 800MW DO219AB
Detailed Description	Zener Diode 12 V 800 mW Surface Mount DO-219A B (SMF)

This model BZD27C12P-HE3-08 is available at DiGi Electronics.

DiGi Electronics offers a global database of semiconductor and electronic component datasheets.

We welcome your inquiries regarding pricing, lead time, or other product-related questions.

 [Request a Quote](#)

 [Datasheet Search](#)



Tel: +00 852-30501935

RFQ Email: [Info@DiGi-Electronics.com](mailto:Info@DiGi-Electronics.com)

DiGi is a global authorized distributor of electronic components.

## Purchase and inquiry

Manufacturer Product Number:

BZD27C12P-HE3-08

Series:

BZD27C

Voltage - Zener (Nom) (Vz):

12 V

Power - Max:

800 mW

Current - Reverse Leakage @ Vr:

3  $\mu$ A @ 9.1 V

Operating Temperature:

-65°C ~ 175°C

Qualification:

AEC-Q101

Package / Case:

DO-219AB

Base Product Number:

BZD27

Manufacturer:

Vishay General Semiconductor - Diodes Division

Product Status:

Active

Tolerance:

-

Impedance (Max) (Zzt):

7 Ohms

Voltage - Forward (Vf) (Max) @ If:

1.2 V @ 200 mA

Grade:

Automotive

Mounting Type:

Surface Mount

Supplier Device Package:

DO-219AB (SMF)

## Environmental & Export classification

RoHS Status:

ROHS3 Compliant

REACH Status:

REACH Unaffected

HTSUS:

8541.10.0050

Moisture Sensitivity Level (MSL):

1 (Unlimited)

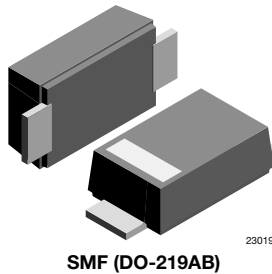
ECCN:

EAR99

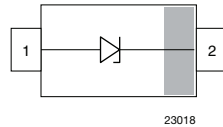


## Zener Diodes with Surge Current Specification

### eSMP® Series



SMF (DO-219AB)



23018

### FEATURES

- Silicon planar Zener diodes
- Low profile surface-mount package
- Zener and surge current specification
- Low leakage current
- Excellent stability
- Meets MSL level 1, per J-STD-020, LF maximum peak of 260 °C
- Meets JESD 201 class 2 whisker test
- ESD capability according to AEC-Q101:  
human body model: > 8 kV  
machine model: > 800 V
- Wave and reflow solderable
- AEC-Q101 qualified available
- Base P/N-E3 - RoHS-compliant, and commercial grade
- Base P/N-HE3 - RoHS-compliant, and AEC-Q101 qualified
- Compatible to SOD-123W package case outline or SOD-123F and SOD-123FL
- Material categorization: for definitions of compliance please see [www.vishay.com/doc?99912](http://www.vishay.com/doc?99912)

RoHS  
COMPLIANT

### LINKS TO ADDITIONAL RESOURCES



PRIMARY CHARACTERISTICS		
PARAMETER	VALUE	UNIT
V <sub>Z</sub> range nom.	3.6 to 200	V
Test current I <sub>ZT</sub>	5 to 100	mA
V <sub>BR</sub>	7 to 188	V
V <sub>WM</sub>	6.2 to 160	V
P <sub>PPM</sub>	150	W
T <sub>J</sub> max.	175	°C
V <sub>Z</sub> specification	Pulse current	
Circuit configuration	Single	
Polarity	Unidirectional	

ORDERING INFORMATION			
DEVICE NAME	ORDERING CODE	TAPED UNITS PER REEL	MINIMUM ORDER QUANTITY
BZD27C Series	BZD27C3V6P-E3-08 to BZD27C200P-E3-08	3000 per 7" reel (8 mm tape)	MOQ = 30K
	BZD27C3V6P-HE3_A08 to BZD27C200P-HE3_A08		
	BZD27C3V6P-E3-18 to BZD27C200P-E3-18	10 000 per 13" reel (8 mm tape)	MOQ = 50K
	BZD27C3V6P-HE3_A18 to BZD27C200P-HE3_A18		

PACKAGE					
PACKAGE NAME	WEIGHT	MOLDING COMPOUND FLAMMABILITY RATING	MOISTURE SENSITIVITY LEVEL	WHISKER TEST ACC. JESD 201	SOLDERING CONDITIONS
SMF (DO-219AB)	15 mg	UL 94 V-0	MSL level 1 (according J-STD-020)	class 2	Peak temperature max. 260 °C

ABSOLUTE MAXIMUM RATINGS (T <sub>amb</sub> = 25 °C, unless otherwise specified)				
PARAMETER	TEST CONDITION	SYMBOL	VALUE	UNIT
Power dissipation	T <sub>L</sub> = 105 °C	P <sub>tot</sub>	2300	mW
	T <sub>A</sub> = 30 °C <sup>(1)</sup>	P <sub>tot</sub>	800	mW
Non repetitive peak surge power dissipation <sup>(2)</sup>	100 μs square pulse	P <sub>ZSM</sub>	300	W
	10/1000 μs waveform	P <sub>RSM</sub>	150	W
Junction to lead		R <sub>thJL</sub>	30	K/W
Junction to ambient air	Mounted on epoxy-glass PCB with 3 mm x 3 mm Cu pads (≥ 40 μm thick)	R <sub>thJA</sub>	180	K/W
Junction temperature		T <sub>j</sub>	175	°C
Storage temperature range		T <sub>stg</sub>	-65 to +175	°C
Operating temperature range		T <sub>op</sub>	-65 to +175	°C

### Notes

- (1) Mounted on epoxy-glass PCB with 3 mm x 3 mm Cu pads (≥ 40 μm thick)  
 (2) T<sub>j</sub> = 25 °C prior to surge



ELECTRICAL CHARACTERISTICS (T <sub>amb</sub> = 25 °C, unless otherwise specified)											
PART NUMBER	MARKING CODE	ZENER VOLTAGE RANGE <sup>(1)</sup>			TEST CURRENT	REVERSE CURRENT		DYNAMIC RESISTANCE		TEMPERATURE COEFFICIENT	
		V <sub>Z</sub> at I <sub>ZT1</sub>			I <sub>ZT1</sub>	I <sub>R</sub> at V <sub>R</sub>		Z <sub>Z</sub> at I <sub>ZT1</sub>		α <sub>VZ</sub> at I <sub>ZT1</sub>	
		V			mA	μA	V	Ω		% / °C	
		MIN.	NOM.	MAX.		MAX.		TYP.	MAX.	MIN.	MAX.
BZD27C3V6P	D0	3.4	3.6	3.8	100	100	1	4	8	-0.14	-0.04
BZD27C3V9P	D1	3.7	3.9	4.1	100	50	1	4	8	-0.14	-0.04
BZD27C4V3P	D2	4	4.3	4.6	100	25	1	4	7	-0.12	-0.02
BZD27C4V7P	D3	4.4	4.7	5	100	10	1	3	7	-0.1	0
BZD27C5V1P	D4	4.8	5.1	5.4	100	5	1	3	6	-0.08	0.02
BZD27C5V6P	D5	5.2	5.6	6	100	10	2	2	4	-0.04	0.04
BZD27C6V2P	D6	5.8	6.2	6.6	100	5	2	2	3	-0.01	0.06
BZD27C6V8P	D7	6.4	6.8	7.2	100	10	3	1	3	0	0.07
BZD27C7V5P	D8	7	7.5	7.9	100	50	3	1	2	0	0.07
BZD27C8V2P	D9	7.7	8.2	8.7	100	10	3	1	2	0.03	0.08
BZD27C9V1P	E0	8.5	9.1	9.6	50	10	5	2	4	0.03	0.08
BZD27C10P	E1	9.4	10	10.6	50	7	7.5	2	4	0.05	0.09
BZD27C11P	E2	10.4	11	11.6	50	4	8.2	4	7	0.05	0.1
BZD27C12P	E3	11.4	12	12.7	50	3	9.1	4	7	0.05	0.1
BZD27C13P	E4	12.4	13	14.1	50	2	10	5	10	0.05	0.1
BZD27C15P	E5	13.8	15	15.6	50	1	11	5	10	0.05	0.1
BZD27C16P	E6	15.3	16	17.1	25	1	12	6	15	0.06	0.11
BZD27C18P	E7	16.8	18	19.1	25	1	13	6	15	0.06	0.11
BZD27C20P	E8	18.8	20	21.2	25	1	15	6	15	0.06	0.11
BZD27C22P	E9	20.8	22	23.3	25	1	16	6	15	0.06	0.11
BZD27C24P	F0	22.8	24	25.6	25	1	18	7	15	0.06	0.11
BZD27C27P	F1	25.1	27	28.9	25	1	20	7	15	0.06	0.11
BZD27C30P	F2	28	30	32	25	1	22	8	15	0.06	0.11
BZD27C33P	F3	31	33	35	25	1	24	8	15	0.06	0.11
BZD27C36P	F4	34	36	38	10	1	27	21	40	0.06	0.11
BZD27C39P	F5	37	39	41	10	1	30	21	40	0.06	0.11
BZD27C43P	F6	40	43	46	10	1	33	24	45	0.07	0.12
BZD27C47P	F7	44	47	50	10	1	36	24	45	0.07	0.12
BZD27C51P	F8	48	51	54	10	1	39	25	60	0.07	0.12
BZD27C56P	F9	52	56	60	10	1	43	25	60	0.07	0.12
BZD27C62P	G0	58	62	66	10	1	47	25	80	0.08	0.13
BZD27C68P	G1	64	68	72	10	1	51	25	80	0.08	0.13
BZD27C75P	G2	70	75	79	10	1	56	30	100	0.08	0.13
BZD27C82P	G3	77	82	87	10	1	62	30	100	0.08	0.13
BZD27C91P	G4	85	91	96	5	1	68	60	200	0.08	0.13
BZD27C100P	G5	94	100	106	5	1	75	60	200	0.09	0.13
BZD27C110P	G6	104	110	116	5	1	82	80	250	0.09	0.13
BZD27C120P	G7	114	120	127	5	1	91	80	250	0.09	0.13
BZD27C130P	G8	124	130	141	5	1	100	110	300	0.09	0.13
BZD27C150P	G9	138	150	156	5	1	110	130	300	0.09	0.13
BZD27C160P	H0	153	160	171	5	1	120	150	350	0.09	0.13
BZD27C180P	H1	168	180	191	5	1	130	180	400	0.09	0.13
BZD27C200P	H2	188	200	212	5	1	150	200	500	0.09	0.13

**Notes**

- Maximum V<sub>F</sub> = 1.2 V, at I<sub>F</sub> = 0.2 A
- Electrical characteristics when used as voltage regulator diodes

<sup>(1)</sup> Pulse test: t<sub>p</sub> ≤ 5 ms



ELECTRICAL CHARACTERISTICS ( $T_{amb} = 25\text{ }^{\circ}\text{C}$ , unless otherwise specified)											
PART NUMBER	MARKING CODE	ZENER VOLTAGE RANGE			TEST CURRENT	REVERSE CURRENT		CLAMPING VOLTAGE		TEMPERATURE COEFFICIENT	
		$V_Z$ at $I_{ZT1}$			$I_{ZT1}$	$I_R$ at $V_R$		$V_C$ at $I_{RSM}^{(1)}$		$\alpha_{VZ}$ at $I_{ZT1}$	
		V			mA	$\mu\text{A}$	V	V	A	%/ $^{\circ}\text{C}$	
		MIN.	NOM.	MAX.		MAX.		MAX.		MIN.	MAX.
BZD27C7V5P	D8	7	7.5	7.9	100	1500	6.2	11.3	13.3	0	0.07
BZD27C8V2P	D9	7.7	8.2	8.7	100	1200	6.8	12.3	12.2	0.03	0.08
BZD27C9V1P	E0	8.5	9.1	9.6	50	100	7.5	13.3	11.3	0.03	0.08
BZD27C10P	E1	9.4	10	10.6	50	20	8.2	14.8	10.1	0.05	0.09
BZD27C11P	E2	10.4	11	11.6	50	5	9.1	15.7	9.6	0.05	0.1
BZD27C12P	E3	11.4	12	12.7	50	5	10	17	8.8	0.05	0.1
BZD27C13P	E4	12.4	13	14.1	50	5	11	18.9	7.9	0.05	0.1
BZD27C15P	E5	13.8	15	15.6	50	5	12	20.9	7.2	0.05	0.1
BZD27C16P	E6	15.3	16	17.1	25	5	13	22.9	6.6	0.06	0.11
BZD27C18P	E7	16.8	18	19.1	25	5	15	25.6	5.9	0.06	0.11
BZD27C20P	E8	18.8	20	21.2	25	5	16	28.4	5.3	0.06	0.11
BZD27C22P	E9	20.8	22	23.3	25	5	18	31	4.8	0.06	0.11
BZD27C24P	F0	22.8	24	25.6	25	5	20	33.8	4.4	0.06	0.11
BZD27C27P	F1	25.1	27	28.9	25	5	22	38.1	3.9	0.06	0.11
BZD27C30P	F2	28	30	32	25	5	24	42.2	3.6	0.06	0.11
BZD27C33P	F3	31	33	35	25	5	27	46.2	3.2	0.06	0.11
BZD27C36P	F4	34	36	38	10	5	30	50.1	3	0.06	0.11
BZD27C39P	F5	37	39	41	10	5	33	54.1	2.8	0.06	0.11
BZD27C43P	F6	40	43	46	10	5	36	60.7	2.5	0.07	0.12
BZD27C47P	F7	44	47	50	10	5	39	65.5	2.3	0.07	0.12
BZD27C51P	F8	48	51	54	10	5	43	70.8	2.1	0.07	0.12
BZD27C56P	F9	52	56	60	10	5	47	78.6	1.9	0.07	0.12
BZD27C62P	G0	58	62	66	10	5	51	86.5	1.7	0.08	0.13
BZD27C68P	G1	64	68	72	10	5	56	94.4	1.6	0.08	0.13
BZD27C75P	G2	70	75	79	10	5	62	103.5	1.5	0.08	0.13
BZD27C82P	G3	77	82	87	10	5	68	114	1.3	0.08	0.13
BZD27C91P	G4	85	91	96	5	5	75	126	1.2	0.09	0.13
BZD27C100P	G5	94	100	106	5	5	82	139	1.1	0.09	0.13
BZD27C110P	G6	104	110	116	5	5	91	150	1	0.09	0.13
BZD27C120P	G7	114	120	127	5	5	100	167	0.9	0.09	0.13
BZD27C130P	G8	124	130	141	5	5	110	185	0.81	0.09	0.13
BZD27C150P	G9	138	150	156	5	5	120	205	0.73	0.09	0.13
BZD27C160P	H0	153	160	171	5	5	130	224	0.67	0.09	0.13
BZD27C180P	H1	168	180	191	5	5	150	252	0.6	0.09	0.13
BZD27C200P	H2	188	200	212	5	5	160	278	0.54	0.09	0.13

**Notes**

- Maximum  $V_F = 1.2\text{ V}$ , at  $I_F = 0.2\text{ A}$
  - Electrical characteristics when used as protection diodes
- (1) Non-repetitive peak reverse current in accordance with "IEC 60-1, section 8" (10/1000  $\mu\text{s}$  pulse); see fig. 4



**TYPICAL CHARACTERISTICS** ( $T_{amb} = 25\text{ }^{\circ}\text{C}$ , unless otherwise specified)

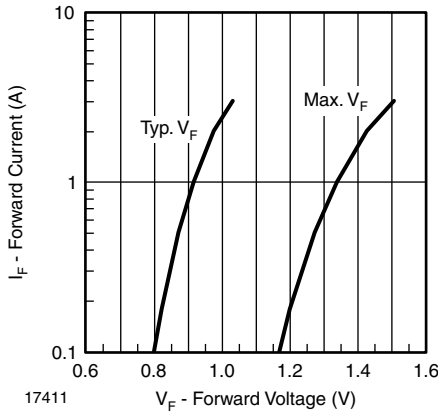


Fig. 1 - Forward Current vs. Forward Voltage

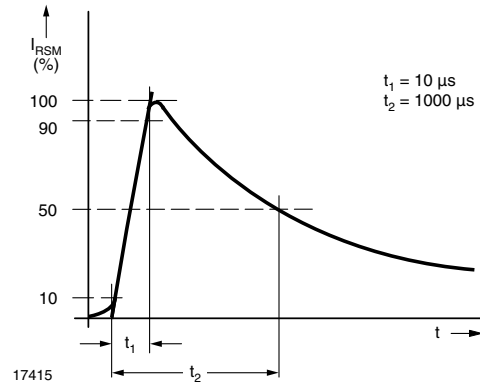


Fig. 4 - Non-Repetitive Peak Reverse Current Pulse Definition

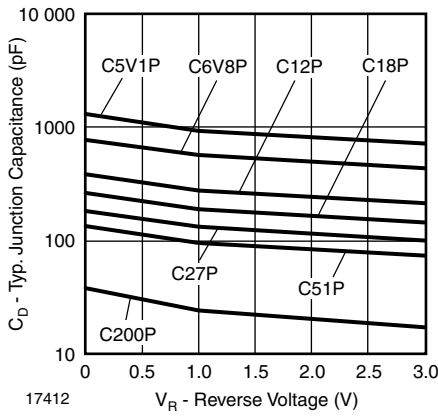


Fig. 2 - Typical Diode Capacitance vs. Reverse Voltage

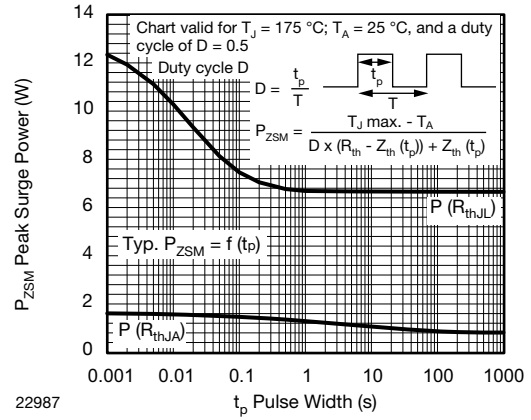


Fig. 5 - Typical Repetitive Peak Surge Power

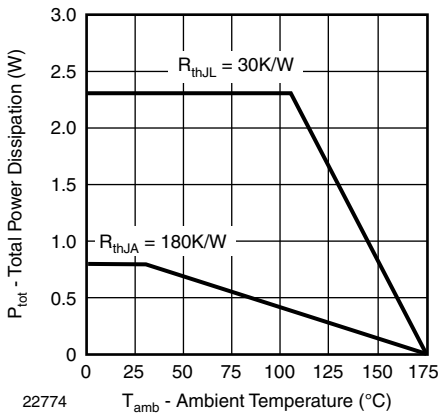


Fig. 3 - Power Dissipation vs. Ambient Temperature

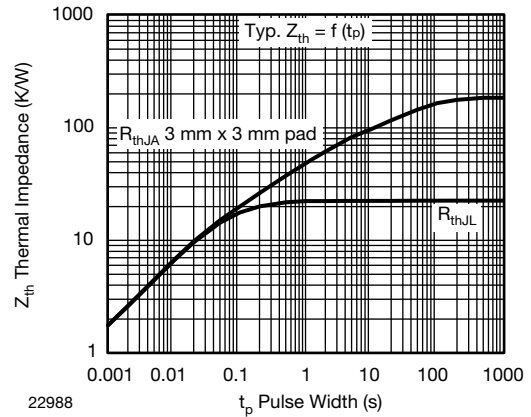
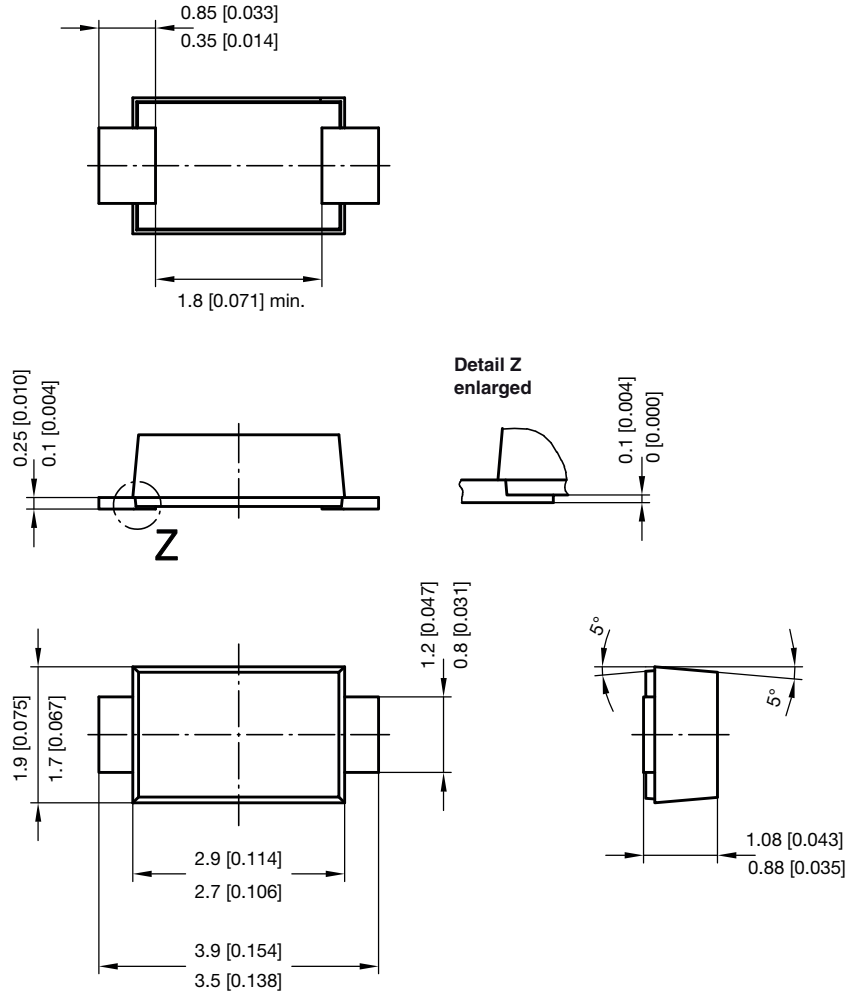


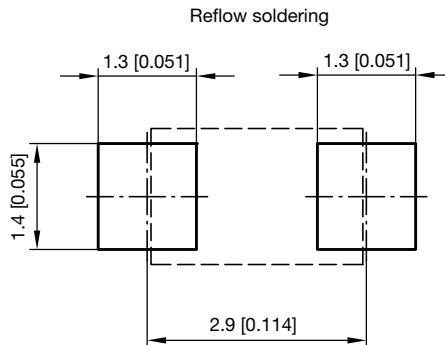
Fig. 6 - Typical Thermal Impedance vs. Time



**PACKAGE DIMENSIONS** in millimeters (inches): **SMF (DO-219AB)**



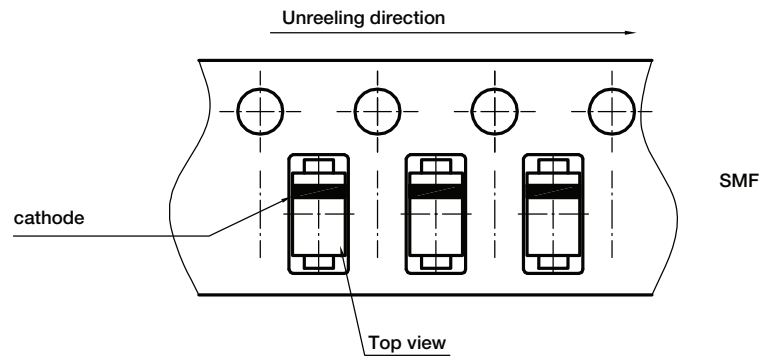
foot print recommendation:



Created - Date: 15. February 2005  
 Rev. 6 - Date: 24.Feb.2021  
 Document no.: S8-V-3915.01-001 (4)  
 22989



## ORIENTATION IN CARRIER TAPE - SMF (DO-219AB)



Document no.: S8-V-3717.02-003 (4)

Created - Date: 09. Feb. 2010

22670



## Disclaimer

ALL PRODUCT, PRODUCT SPECIFICATIONS AND DATA ARE SUBJECT TO CHANGE WITHOUT NOTICE TO IMPROVE RELIABILITY, FUNCTION OR DESIGN OR OTHERWISE.

Vishay Intertechnology, Inc., its affiliates, agents, and employees, and all persons acting on its or their behalf (collectively, "Vishay"), disclaim any and all liability for any errors, inaccuracies or incompleteness contained in any datasheet or in any other disclosure relating to any product.

Vishay makes no warranty, representation or guarantee regarding the suitability of the products for any particular purpose or the continuing production of any product. To the maximum extent permitted by applicable law, Vishay disclaims (i) any and all liability arising out of the application or use of any product, (ii) any and all liability, including without limitation special, consequential or incidental damages, and (iii) any and all implied warranties, including warranties of fitness for particular purpose, non-infringement and merchantability.

Statements regarding the suitability of products for certain types of applications are based on Vishay's knowledge of typical requirements that are often placed on Vishay products in generic applications. Such statements are not binding statements about the suitability of products for a particular application. It is the customer's responsibility to validate that a particular product with the properties described in the product specification is suitable for use in a particular application. Parameters provided in datasheets and / or specifications may vary in different applications and performance may vary over time. All operating parameters, including typical parameters, must be validated for each customer application by the customer's technical experts. Product specifications do not expand or otherwise modify Vishay's terms and conditions of purchase, including but not limited to the warranty expressed therein.

Hyperlinks included in this datasheet may direct users to third-party websites. These links are provided as a convenience and for informational purposes only. Inclusion of these hyperlinks does not constitute an endorsement or an approval by Vishay of any of the products, services or opinions of the corporation, organization or individual associated with the third-party website. Vishay disclaims any and all liability and bears no responsibility for the accuracy, legality or content of the third-party website or for that of subsequent links.

Vishay products are not designed for use in life-saving or life-sustaining applications or any application in which the failure of the Vishay product could result in personal injury or death unless specifically qualified in writing by Vishay. Customers using or selling Vishay products not expressly indicated for use in such applications do so at their own risk. Please contact authorized Vishay personnel to obtain written terms and conditions regarding products designed for such applications.

No license, express or implied, by estoppel or otherwise, to any intellectual property rights is granted by this document or by any conduct of Vishay. Product names and markings noted herein may be trademarks of their respective owners.

## OUR CERTIFICATE

DiGi provide top-quality products and perfect service for customer worldwide through standardization, technological innovation and continuous improvement. DiGi through third-party certification, we strictly control the quality of products and services. Welcome your RFQ to

Email: [Info@DiGi-Electronics.com](mailto:Info@DiGi-Electronics.com)



Tel: +00 852-30501935

RFQ Email: [Info@DiGi-Electronics.com](mailto:Info@DiGi-Electronics.com)

DiGi is a global authorized distributor of electronic components.