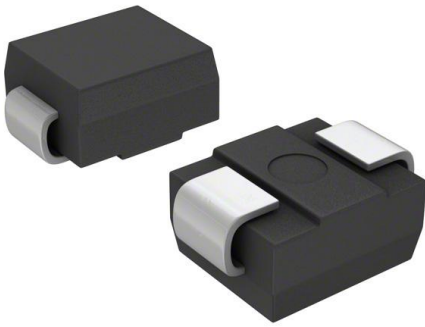


# SS22HE3/52T Datasheet

[www.digi-electronics.com](http://www.digi-electronics.com)



<https://www.DiGi-Electronics.com>

|                              |  |
|------------------------------|--|
| DiGi Electronics Part Number | SS22HE3/52T-DG   |
| Manufacturer                 | <a href="#">Vishay General Semiconductor - Diodes Division</a> |
| Manufacturer Product Number  | SS22HE3/52T  |
| Description                  | DIODE SCHOTTKY 20V 2A DO214AA                                  |
| Detailed Description         | Diode 20 V 2A Surface Mount DO-214AA (SMB)                     |

This model SS22HE3/52T is available at DiGi Electronics.

DiGi Electronics offers a global database of semiconductor and electronic component datasheets.

We welcome your inquiries regarding pricing, lead time, or other product-related questions.

 [Request a Quote](#)

 [Datasheet Search](#)



Tel: +00 852-30501935

RFQ Email: [Info@DiGi-Electronics.com](mailto:Info@DiGi-Electronics.com)

DiGi is a global authorized distributor of electronic components.

## Purchase and inquiry

Manufacturer Product Number:

SS22HE3/52T

Series:

-

Technology:

Schottky

Current - Average Rectified (Io):

2A

Speed:

Fast Recovery =< 500ns, > 200mA (Io)

Capacitance @ Vr, F:

-

Package / Case:

DO-214AA, SMB

Operating Temperature - Junction:

-65°C ~ 125°C

Manufacturer:

Vishay General Semiconductor - Diodes Division

Product Status:

Discontinued at Digi-Key

Voltage - DC Reverse (Vr) (Max):

20 V

Voltage - Forward (Vf) (Max) @ If:

500 mV @ 2 A

Current - Reverse Leakage @ Vr:

400 µA @ 20 V

Mounting Type:

Surface Mount

Supplier Device Package:

DO-214AA (SMB)

Base Product Number:

SS22

## Environmental & Export classification

RoHS Status:

ROHS3 Compliant

REACH Status:

REACH Unaffected

HTSUS:

8541.10.0080

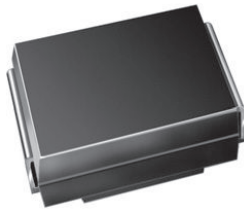
Moisture Sensitivity Level (MSL):

1 (Unlimited)

ECCN:

EAR99

## Surface-Mount Schottky Barrier Rectifier


**SMB (DO-214AA)**

Cathode Anode

### LINKS TO ADDITIONAL RESOURCES


[3D Models](#)

| PRIMARY CHARACTERISTICS |                              |
|-------------------------|------------------------------|
| $I_{F(AV)}$             | 2.0 A                        |
| $V_{RRM}$               | 20 V, 30 V, 40 V, 50 V, 60 V |
| $I_{FSM}$               | 75 A                         |
| $V_F$                   | 0.50 V, 0.70 V               |
| $T_J$ max.              | 150 °C                       |
| Package                 | SMB (DO-214AA)               |
| Circuit configuration   | Single                       |

### FEATURES

- Low profile package
- Ideal for automated placement
- Guardring for overvoltage protection
- Low power losses, high efficiency
- Low forward voltage drop
- High surge capability
- Meets MSL level 1, per J-STD-020, LF maximum peak of 260 °C
- AEC-Q101 qualified available
  - Automotive ordering code: base P/NHE3 or P/NHM3
- Material categorization: for definitions of compliance please see [www.vishay.com/doc?99912](http://www.vishay.com/doc?99912)



### TYPICAL APPLICATIONS

For use in low voltage high frequency inverters, freewheeling, DC/DC converters, and polarity protection applications.

### MECHANICAL DATA

**Case:** SMB (DO-214AA)

Molding compound meets UL 94 V-0 flammability rating  
 Base P/N-E3 - RoHS-compliant, commercial grade  
 Base P/N-M3 - halogen-free, RoHS-compliant, commercial grade

Base P/NHE3\_X - RoHS-compliant and AEC-Q101 qualified  
 Base P/NHM3\_X - halogen-free, RoHS-compliant, and AEC-Q101 qualified  
 (“\_X” denotes revision code e.g. A, B, .....) )

**Terminals:** matte tin plated leads, solderable per J-STD-002 and JESD 22-B102  
 E3, M3, HE3, and HM3 suffix meets JESD 201 class 2 whisker test

**Polarity:** color band denotes cathode end

| MAXIMUM RATINGS ( $T_A = 25\text{ °C}$ unless otherwise noted)  |             |             |      |      |      |      |      |            |
|---|-------------|-------------|------|------|------|------|------|------------|
| PARAMETER   | SYMBOL      | SS22        | SS23 | SS24 | SS25 | SS26 | UNIT |            |
| Device marking code   |             | S2          | S3   | S4   | S5   | S6   |      |            |
| Maximum repetitive peak reverse voltage   | $V_{RRM}$   | 20          | 30   | 40   | 50   | 60   | V    |            |
| Maximum RMS voltage   | $V_{RMS}$   | 14          | 21   | 28   | 35   | 42   | V    |            |
| Maximum DC blocking voltage   | $V_{DC}$    | 20          | 30   | 40   | 50   | 60   | V    |            |
| Max. average forward rectified current at $T_L$ (fig. 1)  | $I_{F(AV)}$ | 2.0         |      |      |      |      |      | A          |
| Peak forward surge current 8.3 ms single half sine-wave superimposed on rated load                            | $I_{FSM}$   | 75          |      |      |      |      |      | A          |
| Non-repetitive avalanche energy at $T_A = 25\text{ °C}$ , $I_{AS} = 2.0\text{ A}$ , $L = 10\text{ mH}$        | $E_{AS}$    | 20          |      |      |      |      |      | mJ         |
| Electrostatic discharge capacitor voltage<br>Human body model: $C = 100\text{ pF}$ , $R = 1.5\text{ k}\Omega$ | $V_C$       | 8.0         |      |      |      |      |      | kV         |
| Voltage rate of change (rated $V_R$ )   | $dV/dt$     | 10 000      |      |      |      |      |      | V/ $\mu$ s |
| Operating junction temperature range  | $T_J$       | -65 to +150 |      |      |      |      |      | °C         |
| Storage temperature range   | $T_{STG}$   | -65 to +150 |      |      |      |      |      | °C         |



| ELECTRICAL CHARACTERISTICS (T <sub>A</sub> = 25 °C unless otherwise noted) |                         |                |      |      |      |      |      |      |
|--|-------------------------|----------------|------|------|------|------|------|------|
| PARAMETER  | TEST CONDITIONS         | SYMBOL         | SS22 | SS23 | SS24 | SS25 | SS26 | UNIT |
| Maximum instantaneous forward voltage <sup>(1)</sup>                       | 2.0 A                   | V <sub>F</sub> | 0.5  |      |      | 0.7  |      | V    |
| Maximum DC reverse current at rated DC blocking voltage <sup>(1)</sup>     | T <sub>A</sub> = 25 °C  | I <sub>R</sub> | 0.4  |      |      |      |      | mA   |
|  | T <sub>A</sub> = 100 °C |                | 10   |      |      |      |      |      |

Note

<sup>(1)</sup> Pulse test: 300 µs pulse width, 1 % duty cycle

| THERMAL CHARACTERISTICS (T <sub>A</sub> = 25 °C unless otherwise noted) |                  |      |      |      |      |      |      |      |
|---|------------------|------|------|------|------|------|------|------|
| PARAMETER   | SYMBOL           | SS22 | SS23 | SS24 | SS25 | SS26 | UNIT |      |
| Typical thermal resistance <sup>(1)</sup>                               | R <sub>θJA</sub> | 75   |      |      |      |      |      | °C/W |
|   | R <sub>θJL</sub> | 17   |      |      |      |      |      |      |

Note

<sup>(1)</sup> PCB mounted with 0.55" x 0.55" (14 mm x 14 mm) copper pad areas

| ORDERING INFORMATION (Example) |                 |                        |               |                                    |
|--------------------------------|-----------------|------------------------|---------------|------------------------------------|
| PREFERRED P/N                  | UNIT WEIGHT (g) | PREFERRED PACKAGE CODE | BASE QUANTITY | DELIVERY MODE                      |
| SS26-E3/52T                    | 0.096           | 52T                    | 750           | 7" diameter plastic tape and reel  |
| SS26-E3/5BT                    | 0.096           | 5BT                    | 3200          | 13" diameter plastic tape and reel |
| SS26HE3_A/H <sup>(1)</sup>     | 0.096           | H                      | 750           | 7" diameter plastic tape and reel  |
| SS26HE3_A/I <sup>(1)</sup>     | 0.096           | I                      | 3200          | 13" diameter plastic tape and reel |
| SS26-M3/52T                    | 0.096           | 52T                    | 750           | 7" diameter plastic tape and reel  |
| SS26-M3/5BT                    | 0.096           | 5BT                    | 3200          | 13" diameter plastic tape and reel |
| SS26HM3_A/H <sup>(1)</sup>     | 0.096           | H                      | 750           | 7" diameter plastic tape and reel  |
| SS26HM3_A/I <sup>(1)</sup>     | 0.096           | I                      | 3200          | 13" diameter plastic tape and reel |

Note

<sup>(1)</sup> AEC-Q101 qualified

**RATINGS AND CHARACTERISTICS CURVES** ( $T_A = 25\text{ }^\circ\text{C}$  unless otherwise noted)

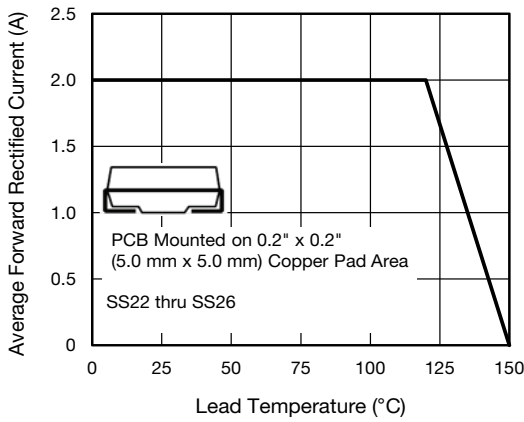


Fig. 1 - Forward Current Derating Curve

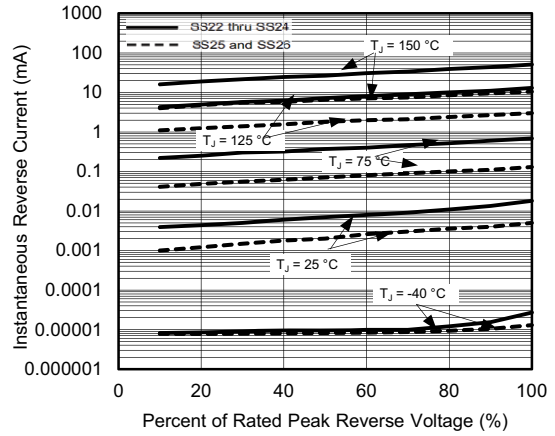


Fig. 4 - Typical Reverse Current Characteristics

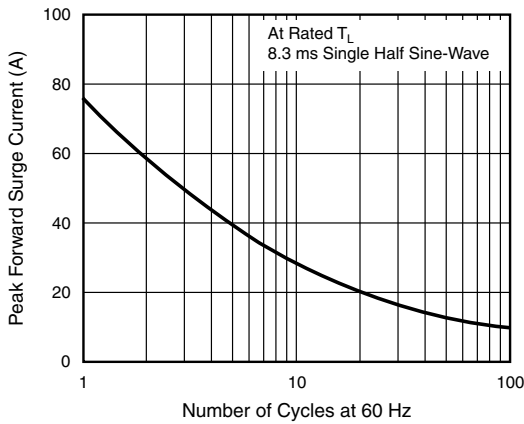


Fig. 2 - Maximum Non-Repetitive Surge Current

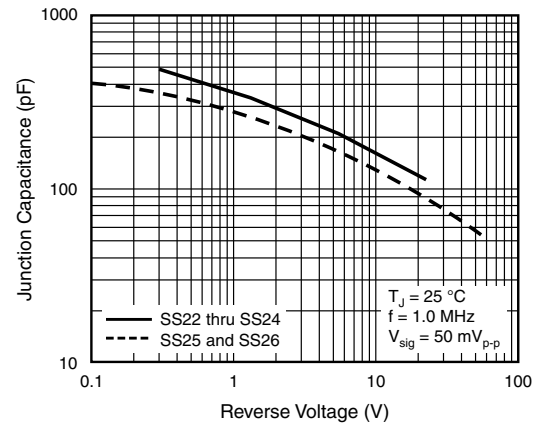


Fig. 5 - Typical Junction Capacitance

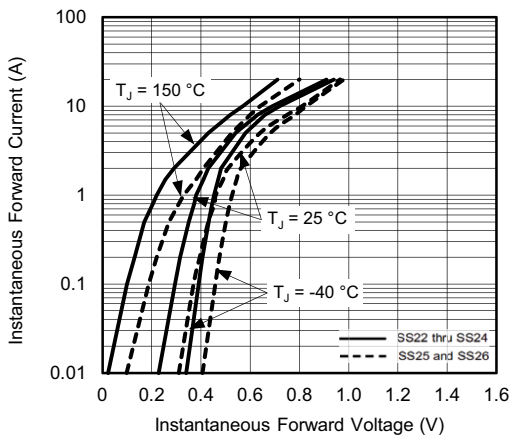
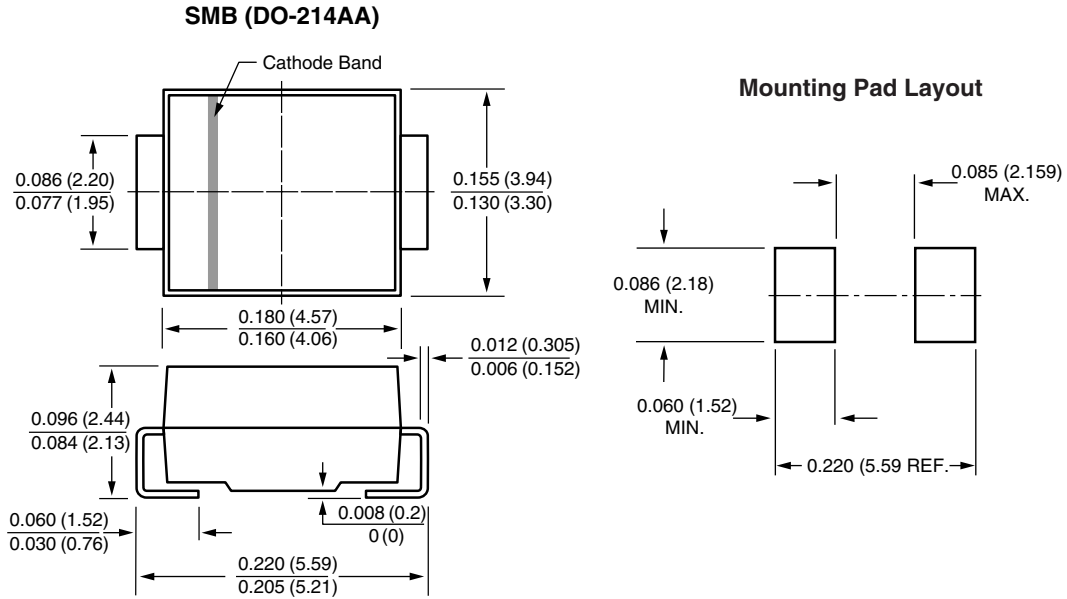


Fig. 3 - Typical Instantaneous Forward Characteristics



PACKAGE OUTLINE DIMENSIONS in inches (millimeters)





## Disclaimer

ALL PRODUCT, PRODUCT SPECIFICATIONS AND DATA ARE SUBJECT TO CHANGE WITHOUT NOTICE TO IMPROVE RELIABILITY, FUNCTION OR DESIGN OR OTHERWISE.

Vishay Intertechnology, Inc., its affiliates, agents, and employees, and all persons acting on its or their behalf (collectively, "Vishay"), disclaim any and all liability for any errors, inaccuracies or incompleteness contained in any datasheet or in any other disclosure relating to any product.

Vishay makes no warranty, representation or guarantee regarding the suitability of the products for any particular purpose or the continuing production of any product. To the maximum extent permitted by applicable law, Vishay disclaims (i) any and all liability arising out of the application or use of any product, (ii) any and all liability, including without limitation special, consequential or incidental damages, and (iii) any and all implied warranties, including warranties of fitness for particular purpose, non-infringement and merchantability.

Statements regarding the suitability of products for certain types of applications are based on Vishay's knowledge of typical requirements that are often placed on Vishay products in generic applications. Such statements are not binding statements about the suitability of products for a particular application. It is the customer's responsibility to validate that a particular product with the properties described in the product specification is suitable for use in a particular application. Parameters provided in datasheets and / or specifications may vary in different applications and performance may vary over time. All operating parameters, including typical parameters, must be validated for each customer application by the customer's technical experts. Product specifications do not expand or otherwise modify Vishay's terms and conditions of purchase, including but not limited to the warranty expressed therein.

Hyperlinks included in this datasheet may direct users to third-party websites. These links are provided as a convenience and for informational purposes only. Inclusion of these hyperlinks does not constitute an endorsement or an approval by Vishay of any of the products, services or opinions of the corporation, organization or individual associated with the third-party website. Vishay disclaims any and all liability and bears no responsibility for the accuracy, legality or content of the third-party website or for that of subsequent links.

Vishay products are not designed for use in life-saving or life-sustaining applications or any application in which the failure of the Vishay product could result in personal injury or death unless specifically qualified in writing by Vishay. Customers using or selling Vishay products not expressly indicated for use in such applications do so at their own risk. Please contact authorized Vishay personnel to obtain written terms and conditions regarding products designed for such applications.

No license, express or implied, by estoppel or otherwise, to any intellectual property rights is granted by this document or by any conduct of Vishay. Product names and markings noted herein may be trademarks of their respective owners.

## OUR CERTIFICATE

DiGi provide top-quality products and perfect service for customer worldwide through standardization, technological innovation and continuous improvement. DiGi through third-party certification, we stricly control the quality of products and services. Welcome your RFQ to

Email: [Info@DiGi-Electronics.com](mailto:Info@DiGi-Electronics.com)



Tel: +00 852-30501935

RFQ Email: [Info@DiGi-Electronics.com](mailto:Info@DiGi-Electronics.com)

DiGi is a global authorized distributor of electronic components.