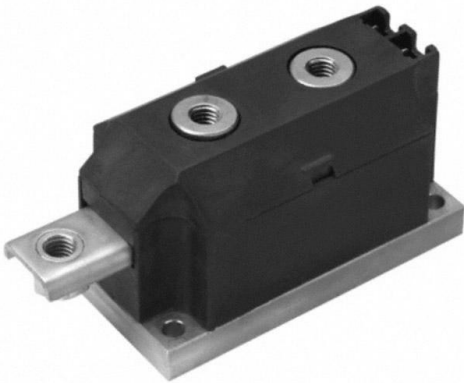


VSKT170-12 Datasheet

www.digi-electronics.com



VSKT170-12

<https://www.DiGi-Electronics.com>

DiGi Electronics Part Number	VSKT170-12-DG
Manufacturer	Vishay General Semiconductor - Diodes Division
Manufacturer Product Number	VSKT170-12
Description	SCR DBL HISCR 1200V 170A MAGNPAK
Detailed Description	SCR Module 1.2 kV 377 A Series Connection - All SC Rs Chassis Mount 3-MAGN-A-PAK™



Tel: +00 852-30501935

RFQ Email: Info@DiGi-Electronics.com

DiGi is a global authorized distributor of electronic components.

Purchase and inquiry

Manufacturer Product Number:

VSKT170-12

Series:

-

Structure:

Series Connection - All SCRs

Voltage - Off State:

1.2 kV

Current - On State (It (RMS)) (Max):

377 A

Current - Gate Trigger (Igt) (Max):

200 mA

Current - Hold (Ih) (Max):

500 mA

Mounting Type:

Chassis Mount

Base Product Number:

VSKT170

Manufacturer:

Vishay General Semiconductor - Diodes Division

Product Status:

Obsolete

Number of SCRs, Diodes:

2 SCRs

Current - On State (It (AV)) (Max):

170 A

Voltage - Gate Trigger (Vgt) (Max):

3 V

Current - Non Rep. Surge 50, 60Hz (I_{tsm}):

5100A, 5350A

Operating Temperature:

-

Package / Case:

3-MAGN-A-PAK™

Environmental & Export classification

RoHS Status:

RoHS non-compliant

REACH Status:

REACH Unaffected

HTSUS:

8541.30.0080

Moisture Sensitivity Level (MSL):

1 (Unlimited)

ECCN:

EAR99



The purpose of this document is to explain the terminology used in the selection filters on the Digi-Key website for the [“SCRs - Arrays, Modules”](#) family. The filterable parameter that these types represent is named “Structure”. This was created to be a quick reference visual aid that will hopefully help with the selection process.

<i>Independent - SCR/Diode</i>	<i>Independent - All SCRs</i>	<i>Series Connection - SCR/Diode</i>	<i>Series Connection - All SCRs</i>
<i>Common Anode - SCR/Diode</i>	<i>Common Anode - All SCRs</i>	<i>Common Cathode - SCR/Diode</i>	<i>Common Cathode - All SCRs</i>
<i>1-Phase Controller - SCR/Diode</i>	<i>1-Phase Controller - All SCRs</i>	<i>2-Phase Controller - All SCRs</i>	<i>3-Phase Controller - SCRs/Diodes</i>
<i>3-Phase Controller - All SCRs</i>	<i>Bridge, Single Phase - SCRs/Diodes</i>		<i>Bridge, Single Phase - All SCRs</i>
	<i>Layout 1</i> 	<i>Layout 2</i> 	<i>Layout 3</i>
<i>Bridge, 3-Phase - SCRs/Diodes</i>	<i>Bridge, 3-Phase - All SCRs</i>	SCR Module Structure Definition	

Disclaimer

This document is for informational use only and is subject to change without prior notice. Digi-Key makes no commitment to update or keep current the information contained herein. Digi-Key does not guarantee or warrant that any information provided is accurate, complete, or correct and disclaims any and all liability associated with the use of the information contained herein. The use of this information and Digi-Key's liability is subject to Digi-Key's standard Terms & Conditions which can be found at www.digi-key.com by clicking on the Terms & Conditions link at the bottom of the web page.

No license, whether express, implied, arising by estoppel or otherwise is granted under any intellectual property or other rights of Digi-Key or others.

Trademarks

DIGI-KEY® is a registered trademark of Digi-Key Corporation. All other trademarks, service marks and product names contained herein are the sole property of their respective owner and their use is for informational purposes only and does not imply any endorsement, recommendation, sponsorship or approval by the trademark owner of the contents.

Copyright

Use of this document is limited to customer's internal business use for the evaluation and purchase of products. No permission is granted to the user to copy, print, store, distribute, transmit, display in public or modify the content of this document in any way for any other purpose.

© Copyright 2009 Digi-Key Corporation. All rights reserved

OUR CERTIFICATE

DiGi provide top-quality products and perfect service for customer worldwide through standardization, technological innovation and continuous improvement. DiGi through third-party certification, we strictly control the quality of products and services. Welcome your RFQ to

Email: Info@DiGi-Electronics.com



Tel: +00 852-30501935

RFQ Email: Info@DiGi-Electronics.com

DiGi is a global authorized distributor of electronic components.