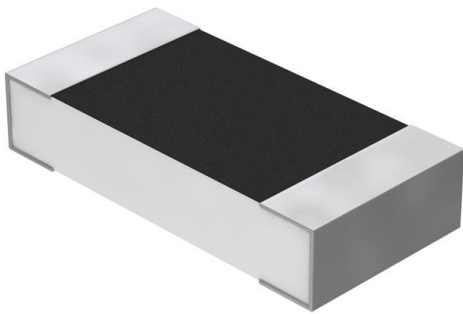


Y1625100R000Q9R Datasheet

www.digi-electronics.com



<https://www.DiGi-Electronics.com>

DiGi Electronics Part Number	Y1625100R000Q9R-DG
Manufacturer	VPG Foil Resistors
Manufacturer Product Number	Y1625100R000Q9R
Description	RES SMD 100 OHM 0.02% 0.3W 1206
Detailed Description	100 Ohms \pm 0.02% 0.3W Chip Resistor 1206 (3216 Metric) Moisture Resistant, Non-Inductive Metal Foil

This model Y1625100R000Q9R is available at DiGi Electronics.

DiGi Electronics offers a global database of semiconductor and electronic component datasheets.

We welcome your inquiries regarding pricing, lead time, or other product-related questions.

 [Request a Quote](#)

 [Datasheet Search](#)



Tel: +00 852-30501935

RFQ Email: Info@DiGi-Electronics.com

DiGi is a global authorized distributor of electronic components.

Purchase and inquiry

Manufacturer Product Number:

Y1625100R000Q9R

Series:

VSMP

Resistance:

100 Ohms

Power (Watts):

0.3W

Features:

Moisture Resistant, Non-Inductive

Operating Temperature:

-55°C ~ 150°C

Supplier Device Package:

1206

Height - Seated (Max):

0.025" (0.64mm)

Failure Rate:

-

Manufacturer:

VPG Foil Resistors

Product Status:

Active

Tolerance:

±0.02%

Composition:

Metal Foil

Temperature Coefficient:

±0.2ppm/°C

Package / Case:

1206 (3216 Metric)

Size / Dimension:

0.126" L x 0.062" W (3.20mm x 1.57mm)

Number of Terminations:

2

Environmental & Export classification

RoHS Status:

ROHS3 Compliant

REACH Status:

Vendor Undefined

HTSUS:

8533.21.0030

Moisture Sensitivity Level (MSL):

1 (Unlimited)

ECCN:

EAR99

OUR CERTIFICATE

DiGi provide top-quality products and perfect service for customer worldwide through standardization, technological innovation and continuous improvement. DiGi through third-party certification, we stricly control the quality of products and services. Welcome your RFQ to

Email: Info@DiGi-Electronics.com



Tel: +00 852-30501935

RFQ Email: Info@DiGi-Electronics.com

DiGi is a global authorized distributor of electronic components.