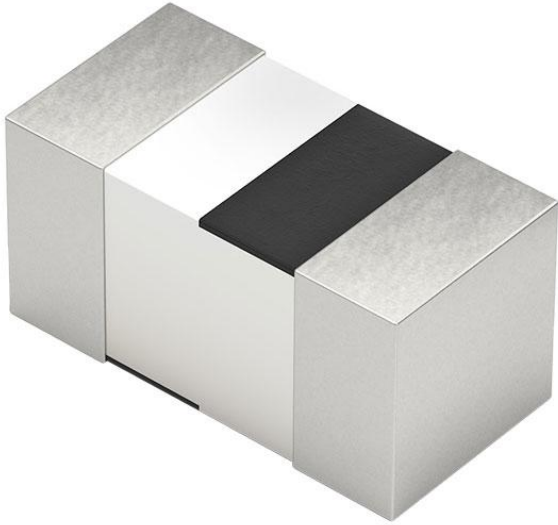


www.digi-electronics.com



<https://www.DiGi-Electronics.com>

840127 Datasheet

DiGi Electronics Part Number	7447840127-DG
Manufacturer	Würth Elektronik
Manufacturer Product Number	7447840127
Description	FIXED IND 27NH 300MA 670MOHM SMD
Detailed Description	27 nH Unshielded Multilayer Inductor 300 mA 670m Ohm Max 0402 (1005 Metric)

Tel: +00  0501935

RFQ Email: Info@DiGi-Electronics.com

DiGi is a global authorized distributor of electronic components.

Purchase and inquiry

Manufacturer Product Number:

7447840127

Series:

WE-MK

Type:

Multilayer

Inductance:

27 nH

Current Rating (Amps):

300 mA

Shielding:

Unshielded

Q @ Freq:

8 @ 100MHz

Ratings:

-

Inductance Frequency - Test:

100 MHz

Mounting Type:

Manufacturer:

Würth Elektronik

Product Status:

Active

Material - Core:

Ceramic

Tolerance:

±5%

Current - Saturation (Isat):

-

DC Resistance (DCR):

670mOhm Max

Frequency - Self Resonant:

1.6GHz

Operating Temperature:

-55°C ~ 125°C

Features:

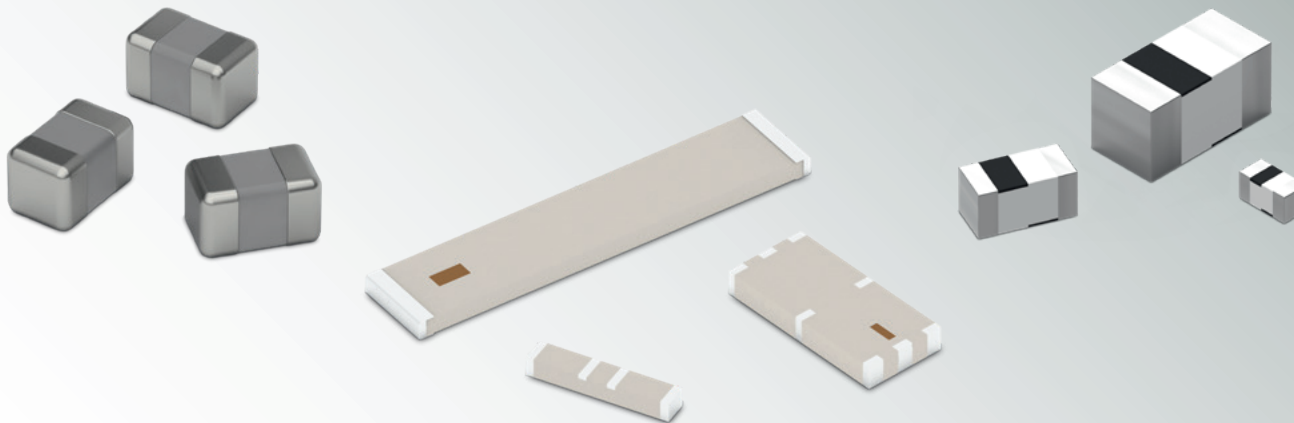
-

Package / Case:



DESIGN KIT

Antenna Matching – One stop solution for impedance matching



LEARN MORE!

TECHNICAL DATA:

Antenna Frequency Range:	850 – 6000 MHz
Inductance:	1 – 100 nH
Capacitance:	0.3 – 27 pF

WE-MCA Multilayer Chip Antennas
WE-MK 0402 Multilayer RF Inductors
WCAP-CSRF MLCCs High Frequency 0402
WR-CXASY High frequency Coaxial Cable

Order Code 748 001

Version 1.0

DESIGN KIT

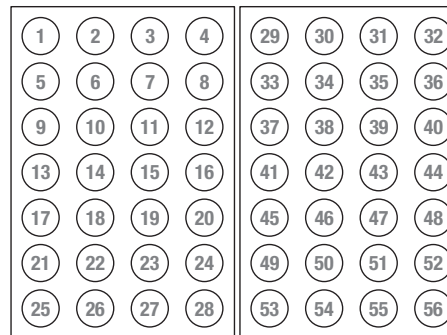
Antenna Matching



LEARN MORE:
www.we-online.com/antennamatching

WE-MK			
No.	Order Code	Type	Value Unit (@ 100 MHz)
1	744 784 001 0	0402	1.0 nH
2	744 784 001 2		1.2 nH
3	744 784 001 5		1.5 nH
4	744 784 001 8		1.8 nH
5	744 784 002 0		2.0 nH
6	744 784 002 2		2.2 nH
7	744 784 002 7		2.7 nH
8	744 784 003 0		3.0 nH
9	744 784 003 3		3.3 nH
10	744 784 003 9		3.9 nH
11	744 784 004 7		4.7 nH
12	744 784 005 6		5.6 nH
13	744 784 006 8		6.8 nH
14	744 784 007 5		7.5 nH
15	744 784 008 2		8.2 nH
16	744 784 011 0		10.0 nH
17	744 784 011 2		12.0 nH
18	744 784 011 5		15.0 nH
19	744 784 011 8		18.0 nH
20	744 784 012 2		22.0 nH
21	744 784 012 7		27.0 nH
22	744 784 013 3		33.0 nH
23	744 784 013 9		39.0 nH
24	744 784 014 7		47.0 nH
25	744 784 015 6		56.0 nH
26	744 784 016 8		68.0 nH
27	744 784 018 2		82.0 nH
28	744 784 021 0		100.0 nH

WCAP-CSRF		
No.	Order Code	Capacitance (@ 1 MHz)
29	885 392 005 001	0.3 pF ± 0.1 pF
30	885 392 005 004	0.5 pF ± 0.05 pF
31	885 392 005 019	0.7 pF ± 0.1 pF
32	885 392 005 022	0.9 pF ± 0.1 pF
33	885 392 005 005	1 pF ± 0.05 pF
34	885 392 005 024	1.2 pF ± 0.1 pF
35	885 392 005 007	1.5 pF ± 0.1 pF
36	885 392 005 008	1.8 pF ± 0.1 pF
37	885 392 005 030	2 pF ± 0.1 pF
38	885 392 005 032	2.2 pF ± 0.1 pF
39	885 392 005 034	2.4 pF ± 0.1 pF
40	885 392 005 037	2.7 pF ± 0.1 pF
41	885 392 005 010	3 pF ± 0.1 pF
42	885 392 005 011	3.3 pF ± 0.1 pF
43	885 392 005 044	3.6 pF ± 0.1 pF
44	885 392 005 047	3.9 pF ± 0.1 pF
45	885 392 005 051	4.3 pF ± 0.1 pF
46	885 392 005 012	4.7 pF ± 0.1 pF
47	885 392 005 013	5.6 pF ± 0.1 pF
48	885 392 005 074	6.8 pF ± 0.1 pF
49	885 392 005 081	7.5 pF ± 0.1 pF
50	885 392 005 088	8.2 pF ± 0.1 pF
56	885 392 005 097	9.1 pF ± 0.1 pF
52	885 392 005 106	10 pF ± 5%
53	885 392 005 127	12 pF ± 2%
54	885 392 005 110	15 pF ± 5%
55	885 392 005 114	22 pF ± 5%
56	885 392 005 116	27 pF ± 5%



Technical Data of WCAP-CSRF

Size:	0402
Height:	0.5 mm
Rated Voltage:	50V _{DC}
Dielectric:	NPO
Capacitance Characteristics*:	30 ppm/°C
Operating Temperature:	-55 °C to +125 °C
Termination:	Cu / Ni / Sn

* within operating temperature range

WR-CXASY	655 035 035 153 08	Frequency Range:	DC – 18 GHz
WR-CXASY	655 035 035 153 05	Frequency Range:	DC – 6 GHz

WE-MCA
748 891 009 2
Frequency Range: 868 – 960 MHz

WE-MCA
748 891 024 5
Frequency Range: 2400 – 2500 MHz

WE-MCA
748 893 024 5
Frequency Range: 2400 – 2500 MHz

WE-MCA
748 891 245 5
Frequency Range: 2.4 – 2.5 & 4.9 – 5.8 GHz

WE-MCA
748 896 024 5
Frequency Range: 2400 – 2500 MHz

WE-MCA
748 892 015 7
Frequency Range: 1550 – 1600 MHz

WE-MCA
748 891 572 4
Frequency Range: 1.57 – 1.58 & 2.4 – 2.5 GHz

WE-MCA
748 892 245 5
Frequency Range: 2.4 – 2.5 & 5.0 – 6.0 GHz

PASSIVE COMPONENTS | OPTOELECTRONIC COMPONENTS | POWER MODULES | ELECTROMECHANICAL COMPONENTS | WIRELESS CONNECTIVITY & SENSORS | AUTOMOTIVE | CUSTOM MAGNETICS | CUSTOM CONNECTOR

Important information: Würth Elektronik's design kits contain reference components. These components correspond with the current product development status on the day of supply. Exchange of the reference components to components with up-to-date product development status is not carried out automatically. No liability is taken for the use of these reference components. Therefore, please request new samples prior to releases for series production and product release.

Please check datasheets on www.we-online.com for specifications. Würth Elektronik eiSos GmbH & Co. KG, EMC & Inductive Solutions. © 2020

OUR CERTIFICATE

DiGi provide top-quality products and perfect service for customer worldwide through standardization, technological innovation and continuous improvement. DiGi through third-party certification, we striciv control the quality of products and services. Welcome your RFQ to

Email: Info@DiGi-Electronics.com



Tel: +00  0501935

RFQ Email: Info@DiGi-Electronics.com

DiGi is a global authorized distributor of electronic components.