

# XA2C384-11TQG144Q Datasheet

[www.digi-electronics.com](http://www.digi-electronics.com)



XA2C384-11TQG144Q

<https://www.DiGi-Electronics.com>

DiGi Electronics Part Number	XA2C384-11TQG144Q-DG
Manufacturer	<a href="#">AMD</a>
Manufacturer Product Number	XA2C384-11TQG144Q
Description	IC CPLD 384MC 9.2NS 144TQFP
Detailed Description	Embedded, Integrated Circuits (ICs)



Tel: +00 852-30501935

RFQ Email: [Info@DiGi-Electronics.com](mailto:Info@DiGi-Electronics.com)

DiGi is a global authorized distributor of electronic components.

## Purchase and inquiry

Manufacturer Product Number:

XA2C384-11TQG144Q

Series:

CoolRunner II

DiGi-Electronics Programmable:

Not Verified

Delay Time tpd(1) Max:

9.2 ns

Number of Logic Elements/Blocks:

24

Number of Gates:

9000

Operating Temperature:

-40°C ~ 105°C (TA)

Package / Case:

144-LQFP

Base Product Number:

XA2C384

Manufacturer:

AMD

Product Status:

Last Time Buy

Programmable Type:

In System Programmable

Voltage Supply - Internal:

1.7V ~ 1.9V

Number of Macrocells:

384

Number of I/O:

118

Mounting Type:

Surface Mount

Supplier Device Package:

144-TQFP (20x20)

## Environmental & Export classification

RoHS Status:

ROHS3 Compliant

REACH Status:

REACH Unaffected

HTSUS:

8542.39.0001

Moisture Sensitivity Level (MSL):

3 (168 Hours)

ECCN:

EAR99



## XA2C384 CoolRunner-II Automotive CPLD

DS556 (v1.1) May 5, 2007

### Product Specification

### Features

- AEC-Q100 device qualification and full PPAP support available in both I-grade and extended temperature Q-grade
- Guaranteed to meet full electrical specifications over  $T_A = -40^\circ\text{C}$  to  $+105^\circ\text{C}$  with  $T_J$  Maximum =  $+125^\circ\text{C}$  (Q-grade)
- Optimized for 1.8V systems
- Industry's best 0.18 micron CMOS CPLD
  - Optimized architecture for effective logic synthesis
  - Multi-voltage I/O operation — 1.5V to 3.3V
- Available in the following package option
  - 144-pin TQFP with 118 user I/O
  - Pb-free only for this package
- Advanced system features
  - Fastest in system programming
    - 1.8V ISP using IEEE 1532 (JTAG) interface
  - IEEE1149.1 JTAG Boundary Scan Test
  - Optional Schmitt-trigger input (per pin)
  - Unsurpassed low power management
    - DataGATE enable (DGE) signal control
  - Four separate I/O banks
  - RealDigital 100% CMOS product term generation
  - Flexible clocking modes
    - Optional DualEDGE triggered registers
    - Clock divider (divide by 2,4,6,8,10,12,14,16)
    - CoolCLOCK
  - Global signal options with macrocell control
    - Multiple global clocks with phase selection per macrocell
    - Multiple global output enables
    - Global set/reset
  - Advanced design security
  - PLA architecture
    - Superior pinout retention
    - 100% product term routability across function block
  - Open-drain output option for Wired-OR and LED drive
  - Optional bus-hold, 3-state or weak pullup on selected I/O pins
  - Optional configurable grounds on unused I/Os
  - Mixed I/O voltages compatible with 1.5V, 1.8V, 2.5V, and 3.3V logic levels
  - Hot pluggable

Refer to the CoolRunner™-II Automotive CPLD family data sheet for architecture description.

WARNING: Programming temperature range of  $T_A = 0^\circ\text{C}$  to  $+70^\circ\text{C}$ .

### Description

The CoolRunner-II Automotive 384-macrocell device is designed for both high performance and low power applications. This lends power savings to high-end communication equipment and high speed to battery operated devices. Due to the low power stand-by and dynamic operation, overall system reliability is improved

This device consists of twenty four Function Blocks inter-connected by a low power Advanced Interconnect Matrix (AIM). The AIM feeds 40 true and complement inputs to each Function Block. The Function Blocks consist of a 40 by 56 P-term PLA and 16 macrocells which contain numerous configuration bits that allow for combinational or registered modes of operation.

Additionally, these registers can be globally reset or preset and configured as a D or T flip-flop or as a D latch. There are also multiple clock signals, both global and local product term types, configured on a per macrocell basis. Output pin configurations include slew rate limit, bus hold, pull-up, open drain and programmable grounds. A Schmitt-trigger input is available on a per input pin basis. In addition to storing macrocell output states, the macrocell registers may be configured as direct input registers to store signals directly from input pins.

Clocking is available on a global or Function Block basis. Three global clocks are available for all Function Blocks as a synchronous clock source. Macrocell registers can be individually configured to power up to the zero or one state. A global set/reset control line is also available to asynchronously set or reset selected registers during operation. Additional local clock, synchronous clock-enable, asynchronous set/reset and output enable signals can be formed using product terms on a per-macrocell or per-Function Block basis.

A DualEDGE flip-flop feature is also available on a per macrocell basis. This feature allows high performance synchronous operation based on lower frequency clocking to help reduce the total power consumption of the device.

Circuitry has also been included to divide one externally supplied global clock (GCK2) by eight different selections. This yields divide by even and odd clock frequencies.

The use of the clock divide (division by 2) and DualEDGE flip-flop gives the resultant CoolCLOCK feature.

DataGATE is a method to selectively disable inputs of the CPLD that are not of interest during certain points in time. By mapping a signal to the DataGATE function, lower power can be achieved due to reduction in signal switching.

Another feature that eases voltage translation is I/O banking. Four I/O banks are available on the CoolRunner-II Automotive 384 macrocell device that permit easy interfacing to 3.3V, 2.5V, 1.8V, and 1.5V devices.

The CoolRunner-II Automotive 384-macrocell CPLD is I/O compatible with various I/O standards (see [Table 1](#)). This device is also 1.5V I/O compatible with the use of Schmitt-trigger inputs.

## RealDigital Design Technology

Xilinx CoolRunner-II Automotive CPLDs are fabricated on a 0.18 micron process technology which is derived from leading edge FPGA product development. CoolRunner-II Automotive CPLDs employ RealDigital a design technique that makes use of CMOS technology in both the fabrication and design methodology. RealDigital design technology employs a cascade of CMOS gates to implement sum of products instead of traditional sense amplifier methodology. Due to this technology, Xilinx CoolRunner-II Automotive

CPLDs achieve both high-performance and low power operation.

## Supported I/O Standards

The CoolRunner-II Automotive 384-macrocell device features LVCMOS and LVTTTL I/O implementations. See [Table 1](#) for I/O standard voltages. The LVTTTL I/O standard is a general purpose EIA/JEDEC standard for 3.3V applications that use an LVTTTL input buffer and Push-Pull output buffer. The LVCMOS standard is used in 3.3V, 2.5V, 1.8V applications. CoolRunner-II Automotive CPLDs are also 1.5V I/O compatible with the use of Schmitt-trigger inputs.

Table 1: I/O Standards for XA2C384

IOSTANDARD Attribute	Output V <sub>CCIO</sub>	Input V <sub>CCIO</sub>
LVTTTL	3.3	3.3
LVCMOS33	3.3	3.3
LVCMOS25	2.5	2.5
LVCMOS18	1.8	1.8
LVCMOS15 <sup>(1)</sup>	1.5	1.5

(1) LVCMOS15 requires Schmitt-trigger inputs.

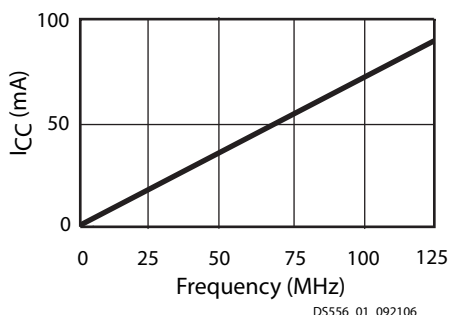


Figure 1: I<sub>CC</sub> vs Frequency

Table 2: I<sub>CC</sub> vs Frequency (LVCMOS 1.8V T<sub>A</sub> = 25°C)<sup>(1)</sup>

	Frequency (MHz)					
	0	25	50	75	100	125
Typical I <sub>CC</sub> (mA)	0.023	17.5	35.03	52.53	70.03	87.53

### Notes:

- 16-bit up/down, Resettable binary counter (one counter per function block).

## Absolute Maximum Ratings (1)

Symbol	Description	Value	Units
$V_{CC}$	Supply voltage relative to ground	-0.5 to 2.0	V
$V_{CCIO}$	Supply voltage for output drivers	-0.5 to 4.0	V
$V_{JTAG}^{(2)}$	JTAG input voltage limits	-0.5 to 4.0	V
$V_{CCAUX}$	JTAG input supply voltage	-0.5 to 4.0	V
$V_{IN}^{(1)}$	Input voltage relative to ground	-0.5 to 4.0	V
$V_{TS}^{(1)}$	Voltage applied to 3-state output	-0.5 to 4.0	V
$T_{STG}^{(3)}$	Storage Temperature (ambient)	-65 to +150	°C
$T_J$	Junction Temperature	+125	°C

**Notes:**

- Maximum DC undershoot below GND must be limited to either 0.5V or 10 mA, whichever is easiest to achieve. During transitions, the device pins may undershoot to -2.0v or overshoot to +4.5V, provided this over or undershoot lasts less than 10 ns and with the forcing current being limited to 200 mA.
- Valid over commercial temperature range.
- For soldering guidelines and thermal considerations, see the [Device Packaging](#) information on the Xilinx website. For Pb-free packages, see [XAPP427](#).

## Recommended Operating Conditions

Symbol	Parameter	Min	Max	Units	
$V_{CC}$	Supply voltage for internal logic and input buffers	Industrial $T_A = -40^{\circ}\text{C}$ to $+85^{\circ}\text{C}$	1.7	1.9	V
		Q-Grade $T_A = -40^{\circ}\text{C}$ to $+105^{\circ}\text{C}$ $T_J$ Maximum = $+125^{\circ}\text{C}$	1.7	1.9	V
$V_{CCIO}$	Supply voltage for output drivers @ 3.3V operation	3.0	3.6	V	
	Supply voltage for output drivers @ 2.5V operation	2.3	2.7	V	
	Supply voltage for output drivers @ 1.8V operation	1.7	1.9	V	
	Supply voltage for output drivers @ 1.5V operation	1.4	1.6	V	
$V_{CCAUX}$	Supply voltage for JTAG programming	1.7	3.6	V	

## DC Electrical Characteristics (Over Recommended Operating Conditions)

Symbol	Parameter	Test Conditions	Typical	Max.	Units
$I_{CCSB}$	Standby current Industrial	$V_{CC} = 1.9\text{V}$ , $V_{CCIO} = 3.6\text{V}$	79	350	$\mu\text{A}$
$I_{CCSB}$	Standby current Q-grade	$V_{CC} = 1.9\text{V}$ , $V_{CCIO} = 3.6\text{V}$	79	4.0	mA
$I_{CC}^{(1)}$	Dynamic current	$f = 1\text{ MHz}$		6.0	mA
		$f = 50\text{ MHz}$		50	mA
$C_{JTAG}$	JTAG input capacitance	$f = 1\text{ MHz}$	-	10	pF
$C_{CLK}$	Global clock input capacitance	$f = 1\text{ MHz}$	-	12	pF
$C_{IO}$	I/O capacitance	$f = 1\text{ MHz}$	-	10	pF
$I_{IL}^{(2)}$	Input leakage current	$V_{IN} = 0\text{V}$ or $V_{CCIO}$ to 3.9V	-	+/-10	$\mu\text{A}$
$I_{IH}^{(2)}$	I/O High-Z leakage	$V_{IN} = 0\text{V}$ or $V_{CCIO}$ to 3.9V	-	+/-10	$\mu\text{A}$

**Notes:**

- 16-bit up/down, Resettable binary counter (one counter per function block).

## LVC MOS and LV TTL 3.3V DC Voltage Specifications

Symbol	Parameter	Test Conditions	Min.	Max.	Units
$V_{CCIO}$	Input source voltage		3.0	3.6	V
$V_{IH}$	High level input voltage		2	3.9	V
$V_{IL}$	Low level input voltage		-0.3	0.8	V
$V_{OH}$	High level output voltage, Industrial grade	$I_{OH} = -8 \text{ mA}, V_{CCIO} = 3\text{V}$	$V_{CCIO} - 0.4\text{V}$	-	V
		$I_{OH} = -0.1 \text{ mA}, V_{CCIO} = 3\text{V}$	$V_{CCIO} - 0.2\text{V}$	-	V
	High level output voltage, Q-grade	$I_{OH} = -4 \text{ mA}, V_{CCIO} = 3\text{V}$	$V_{CCIO} - 0.4\text{V}$	-	V
		$I_{OH} = -0.1 \text{ mA}, V_{CCIO} = 3\text{V}$	$V_{CCIO} - 0.2\text{V}$	-	V
$V_{OL}$	High level output voltage, Industrial grade	$I_{OL} = 8 \text{ mA}, V_{CCIO} = 3\text{V}$	-	0.4	V
		$I_{OL} = 0.1 \text{ mA}, V_{CCIO} = 3\text{V}$	-	0.2	V
	High level output voltage, Q-grade	$I_{OL} = 4 \text{ mA}, V_{CCIO} = 3\text{V}$	-	0.4	V
		$I_{OL} = 0.1 \text{ mA}, V_{CCIO} = 3\text{V}$	-	0.2	V

## LVC MOS 2.5V DC Voltage Specifications

Symbol	Parameter	Test Conditions	Min.	Max.	Units
$V_{CCIO}$	Input source voltage		2.3	2.7	V
$V_{IH}$	High level input voltage		1.7	$V_{CCIO} + 0.3^{(1)}$	V
$V_{IL}$	Low level input voltage		-0.3	0.7	V
$V_{OH}$	High level output voltage, Industrial grade	$I_{OH} = -8 \text{ mA}, V_{CCIO} = 2.3\text{V}$	$V_{CCIO} - 0.4\text{V}$	-	V
		$I_{OH} = -0.1 \text{ mA}, V_{CCIO} = 2.3\text{V}$	$V_{CCIO} - 0.2\text{V}$	-	V
	High level output voltage, Q-grade	$I_{OH} = -4 \text{ mA}, V_{CCIO} = 2.3\text{V}$	$V_{CCIO} - 0.4\text{V}$	-	V
		$I_{OH} = -0.1 \text{ mA}, V_{CCIO} = 2.3\text{V}$	$V_{CCIO} - 0.2\text{V}$	-	V
$V_{OL}$	High level output voltage, Industrial grade	$I_{OL} = 8 \text{ mA}, V_{CCIO} = 2.3\text{V}$	-	0.4	V
		$I_{OL} = 0.1 \text{ mA}, V_{CCIO} = 2.3\text{V}$	-	0.2	V
	High level output voltage, Q-grade	$I_{OL} = 4 \text{ mA}, V_{CCIO} = 2.3\text{V}$	-	0.4	V
		$I_{OL} = 0.1 \text{ mA}, V_{CCIO} = 2.3\text{V}$	-	0.2	V

1. The  $V_{IH}$  Max value represents the JEDEC specification for LVC MOS25. The CoolRunner-II input buffer can tolerate up to 3.9V without physical damage.

## LVC MOS 1.8V DC Voltage Specifications

Symbol	Parameter	Test Conditions	Min.	Max.	Units
$V_{CCIO}$	Input source voltage		1.7	1.9	V
$V_{IH}$	High level input voltage		$0.65 \times V_{CCIO}$	$V_{CCIO} + 0.3^{(1)}$	V
$V_{IL}$	Low level input voltage		-0.3	$0.35 \times V_{CCIO}$	V
$V_{OH}$	High level output voltage, Industrial grade	$I_{OH} = -8 \text{ mA}, V_{CCIO} = 1.7\text{V}$	$V_{CCIO} - 0.45$	-	V
		$I_{OH} = -0.1 \text{ mA}, V_{CCIO} = 1.7\text{V}$	$V_{CCIO} - 0.2$	-	V
	High level output voltage, Q-grade	$I_{OH} = -4 \text{ mA}, V_{CCIO} = 1.7\text{V}$	$V_{CCIO} - 0.45$	-	V
		$I_{OH} = -0.1 \text{ mA}, V_{CCIO} = 1.7\text{V}$	$V_{CCIO} - 0.2$	-	V
$V_{OL}$	High level output voltage, Industrial grade	$I_{OL} = 8 \text{ mA}, V_{CCIO} = 1.7\text{V}$	-	0.45	V
		$I_{OL} = 0.1 \text{ mA}, V_{CCIO} = 1.7\text{V}$	-	0.2	V
	High level output voltage, Q-grade	$I_{OL} = 4 \text{ mA}, V_{CCIO} = 1.7\text{V}$	-	0.45	V
		$I_{OL} = 0.1 \text{ mA}, V_{CCIO} = 1.7\text{V}$	-	0.2	V

1. The  $V_{IH}$  Max value represents the JEDEC specification for LVC MOS18. The CoolRunner-II input buffer can tolerate up to 3.9V without physical damage.

## LVC MOS 1.5V DC Voltage Specifications<sup>(1)</sup>

Symbol	Parameter	Test Conditions	Min.	Max.	Units
$V_{CCIO}$	Input source voltage		1.4	1.6	V
$V_{T+}$	Input hysteresis threshold voltage		$0.5 \times V_{CCIO}$	$0.8 \times V_{CCIO}$	V
$V_{T-}$			$0.2 \times V_{CCIO}$	$0.5 \times V_{CCIO}$	V
$V_{OH}$	High level output voltage, Industrial grade	$I_{OH} = -8 \text{ mA}, V_{CCIO} = 1.4\text{V}$	$V_{CCIO} - 0.45$	-	V
		$I_{OH} = -0.1 \text{ mA}, V_{CCIO} = 1.4\text{V}$	$V_{CCIO} - 0.2$	-	V
	High level output voltage, Q-grade	$I_{OH} = -4 \text{ mA}, V_{CCIO} = 1.4\text{V}$	$V_{CCIO} - 0.45$	-	V
		$I_{OH} = -0.1 \text{ mA}, V_{CCIO} = 1.4\text{V}$	$V_{CCIO} - 0.2$	-	V
$V_{OL}$	High level output voltage, Industrial grade	$I_{OL} = 8 \text{ mA}, V_{CCIO} = 1.4\text{V}$	-	0.4	V
		$I_{OL} = 0.1 \text{ mA}, V_{CCIO} = 1.4\text{V}$	-	0.2	V
	High level output voltage, Q-grade	$I_{OL} = 4 \text{ mA}, V_{CCIO} = 1.4\text{V}$	-	0.4	V
		$I_{OL} = 0.1 \text{ mA}, V_{CCIO} = 1.4\text{V}$	-	0.2	V

**Notes:**

1. Hysteresis used on 1.5V inputs.

## Schmitt Trigger Input DC Voltage Specifications

Symbol	Parameter	Test Conditions	Min.	Max.	Units
$V_{CCIO}$	Input source voltage		1.4	3.9	V
$V_{T+}$	Input hysteresis threshold voltage		$0.5 \times V_{CCIO}$	$0.8 \times V_{CCIO}$	V
$V_{T-}$			$0.2 \times V_{CCIO}$	$0.5 \times V_{CCIO}$	V

## AC Electrical Characteristics Over Recommended Operating Conditions

Symbol	Parameter	-10		-11		Units
		Min.	Max.	Min.	Max.	
T <sub>PD1</sub>	Propagation delay single p-term	-	9.2	-	9.2	ns
T <sub>PD2</sub>	Propagation delay OR array	-	10.0	-	10.0	ns
T <sub>SUD</sub>	Direct input register set-up time	4.2	-	4.5	-	ns
T <sub>SU1</sub>	Setup time fast (single p-term)	3.3	-	3.8	-	ns
T <sub>SU2</sub>	Setup time (OR array)	4.1	-	4.6	-	ns
T <sub>HD</sub>	Direct input register hold time	0.0	-	0.0	-	ns
T <sub>H</sub>	Hold time (OR array or p-term)	0.0	-	0.3	-	ns
T <sub>CO</sub>	Clock to output	-	7.9	-	7.9	ns
F <sub>TOGGLE</sub> <sup>(1)</sup>	Internal toggle rate	-	166	-	166	MHz
F <sub>SYSTEM1</sub> <sup>(2)</sup>	Maximum system frequency	-	125	-	118	MHz
F <sub>SYSTEM2</sub> <sup>(2)</sup>	Maximum system frequency	-	114	-	108	MHz
F <sub>EXT1</sub> <sup>(3)</sup>	Maximum external frequency	-	89	-	85	MHz
F <sub>EXT2</sub> <sup>(3)</sup>	Maximum external frequency	-	83	-	80	MHz
T <sub>PSUD</sub>	Direct input register p-term clock setup time	2.5	-	2.7	-	ns
T <sub>PSU1</sub>	P-term clock setup time (single p-term)	1.9	-	2.1	-	ns
T <sub>PSU2</sub>	P-term clock setup time (OR array)	2.7	-	2.9	-	ns
T <sub>PHD</sub>	Direct input register p-term clock hold time	0.4	-	1.2	-	ns
T <sub>PH</sub>	P-term clock hold	1.3	-	1.7	-	ns
T <sub>PCO</sub>	P-term clock to output	-	9.3	-	9.3	ns
T <sub>OE</sub> /T <sub>OD</sub>	Global OE to output enable/disable	-	9.2	-	9.2	ns
T <sub>POE</sub> /T <sub>POD</sub>	P-term OE to output enable/disable	-	10.2	-	10.4	ns
T <sub>MOE</sub> /T <sub>MOD</sub>	Macrocell driven OE to output enable/disable	-	12.5	-	12.5	ns
T <sub>PAO</sub>	P-term set/reset to output valid	-	11.6	-	11.6	ns
T <sub>AO</sub>	Global set/reset to output valid	-	11.5	-	11.5	ns
T <sub>SUEC</sub>	Register clock enable setup time	3.4	-	4.0	-	ns
T <sub>HEC</sub>	Register clock enable hold time	0.0	-	0.3	-	ns
T <sub>CW</sub>	Global clock pulse width High or Low	3.0	-	3.0	-	ns
T <sub>PCW</sub>	P-term pulse width High or Low	10.0	-	10.0	-	ns
T <sub>APRPW</sub>	Asynchronous preset/reset pulse width (High or Low)	10.0	-	10.0	-	ns
T <sub>DGSU</sub>	Set-up before DataGATE latch assertion	0.0	-	0.0	-	ns
T <sub>DGH</sub>	Hold to DataGATE latch assertion	6.0	-	6.0	-	ns
T <sub>DGR</sub>	DataGATE recovery to new data		11.0		11.0	ns
T <sub>DGW</sub>	DataGATE low pulse width	5.0	-	5.0	-	ns
T <sub>CDRSU</sub>	CDRST setup time before falling edge GCLK2	2.5	-	2.5	-	ns
T <sub>CDRH</sub>	CDRST hold time before falling edge GCLK2	0.0	-	0.2	-	ns
T <sub>CONFIG</sub>	Configuration time	-	200	-	200	μs

### Notes:

1. F<sub>TOGGLE</sub> is the maximum frequency of a T flip-flop can reliably toggle (see CoolRunner-II Automotive CPLD family data sheet).
2. F<sub>SYSTEM1</sub> (1/T<sub>CYCLE</sub>) is the internal operating frequency for a device with 16-bit Resettable binary counter through one p-term per macrocell while F<sub>SYSTEM2</sub> is through the OR array (one counter per function block)
3. F<sub>EXT1</sub>(1/T<sub>SU1</sub>+T<sub>CO</sub>) is the maximum external frequency using one p-term while F<sub>EXT2</sub> is through the OR array
4. Typical configuration current during T<sub>CONFIG</sub> is 25 mA.

## Internal Timing Parameters

Symbol	Parameter <sup>(1)</sup>	-10		-11		Units
		Min.	Max.	Min.	Max.	
<b>Buffer Delays</b>						
T <sub>IN</sub>	Input buffer delay	-	3.8	-	3.8	ns
T <sub>DIN</sub>	Direct data register input delay	-	5.5	-	5.3	ns
T <sub>GCK</sub>	Global Clock buffer delay	-	3.3	-	3.3	ns
T <sub>GSR</sub>	Global set/reset buffer delay	-	4.6	-	4.6	ns
T <sub>GTS</sub>	Global 3-state buffer delay	-	3.7	-	3.5	ns
T <sub>OUT</sub>	Output buffer delay	-	3.9	-	3.9	ns
T <sub>EN</sub>	Output buffer enable/disable delay	-	5.5	-	5.7	ns
<b>P-term Delays</b>						
T <sub>CT</sub>	Control term delay	-	0.9	-	0.9	ns
T <sub>LOGI1</sub>	Single P-term delay adder	-	0.8	-	0.8	ns
T <sub>LOGI2</sub>	Multiple P-term delay adder	-	0.8	-	0.8	ns
<b>Macrocell Delay</b>						
T <sub>PDI</sub>	Input to output valid	-	0.7	-	0.7	ns
T <sub>LDI</sub>	Setup before clock (transparent latch)	-	2.5	-	2.5	ns
T <sub>SUI</sub>	Setup before clock	2.0	-	2.5	-	ns
T <sub>HI</sub>	Hold after clock	0.0	-	0.0	-	ns
T <sub>ECSU</sub>	Enable clock setup time	2.0	-	2.6	-	ns
T <sub>ECHO</sub>	Enable clock hold time	0.0	-	1.7	-	ns
T <sub>COI</sub>	Clock to output valid	-	0.7	-	0.7	ns
T <sub>AOI</sub>	Set/reset to output valid	-	3.0	-	3.0	ns
<b>Feedback Delays</b>						
T <sub>F</sub>	Feedback delay	-	4.5	-	4.5	ns
T <sub>OEM</sub>	Macrocell to global OE delay	-	3.0	-	2.8	ns
<b>I/O Standard Time Adder Delays 1.5V CMOS</b>						
T <sub>HYS15</sub>	Hysteresis input adder	-	4.0	-	4.0	ns
T <sub>OUT15</sub>	Output adder	-	1.0	-	1.0	ns
T <sub>SLEW15</sub>	Output slew rate adder	-	4.0	-	4.0	ns
<b>I/O Standard Time Adder Delays 1.8V CMOS</b>						
T <sub>HYS18</sub>	Hysteresis input adder	-	4.0	-	4.0	ns
T <sub>OUT18</sub>	Output adder	-	0.0	-	0.0	ns
T <sub>SLEW</sub>	Output slew rate adder	-	4.0	-	4.0	ns
<b>I/O Standard Time Adder Delays 2.5V CMOS</b>						
T <sub>IN25</sub>	Standard input adder	-	1.0	-	1.0	ns
T <sub>HYS25</sub>	Hysteresis input adder	-	3.0	-	3.0	ns
T <sub>OUT25</sub>	Output adder	-	3.0	-	3.0	ns
T <sub>SLEW25</sub>	Output slew rate adder	-	4.0	-	5.6	ns

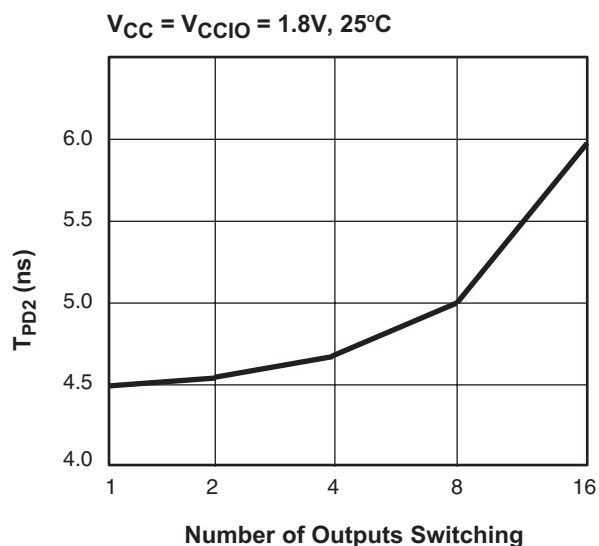
## Internal Timing Parameters (Continued)

Symbol	Parameter <sup>(1)</sup>	-10		-11		Units
		Min.	Max.	Min.	Max.	
<b>I/O Standard Time Adder Delays 3.3V CMOS/TTL</b>						
$T_{IN33}$	Standard input adder	-	2.0	-	2.0	ns
$T_{HYS33}$	Hysteresis input adder	-	3.0	-	3.0	ns
$T_{OUT33}$	Output adder	-	3.0	-	3.0	ns
$T_{SLEW33}$	Output slew rate adder	-	4.0	-	4.0	ns

### Notes:

- 1.5 ns input pin signal rise/fall.

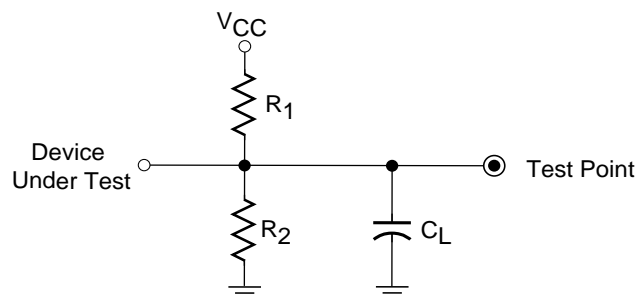
## Switching Characteristics



DS095\_02\_053103

Figure 2: Derating Curve for  $T_{PD}$

## Switching Test Conditions



Output Type	$R_1$	$R_2$	$C_L$
LVTTL33	268 $\Omega$	235 $\Omega$	35 pF
LVC MOS33	275 $\Omega$	275 $\Omega$	35 pF
LVC MOS25	188 $\Omega$	188 $\Omega$	35 pF
LVC MOS18	112.5 $\Omega$	112.5 $\Omega$	35 pF
LVC MOS15	150 $\Omega$	150 $\Omega$	35 pF

### Notes:

- $C_L$  includes test fixtures and probe capacitance.
- 1.5 nsec maximum rise/fall times on inputs.

DS092\_03\_092302

Figure 3: AC Load Circuit

Typical I/V Output Curves

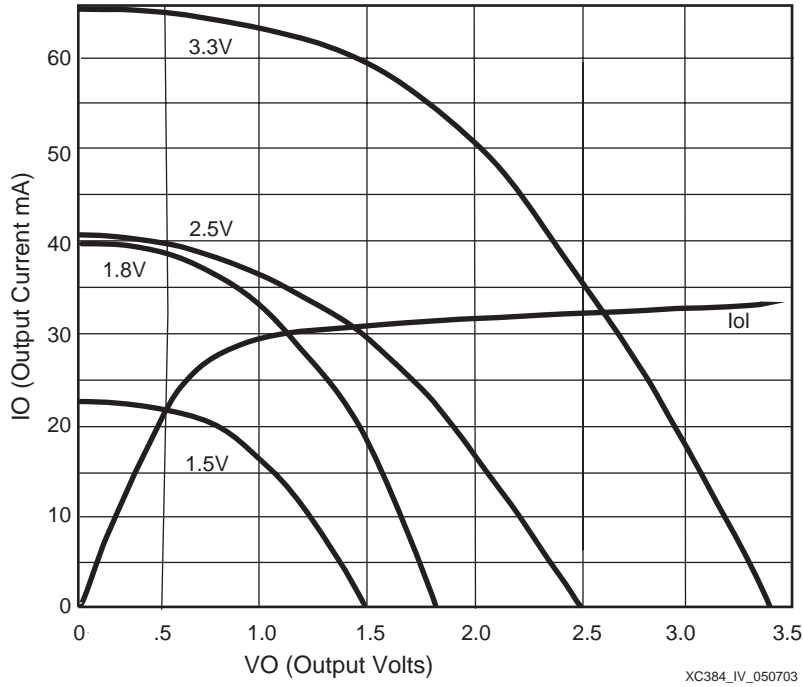


Figure 4: Typical I/V Curves for XA2C384

Pin Descriptions

Function Block	Macrocell	TQG144	I/O Bank
1	1	-	2
1	2	-	2
1(GSR)	3	143	2
1	4	142	2
1	5	-	2
1	6	-	-
1	7	-	-
1	8	-	-
1	9	-	-
1	10	-	-
1	11	-	-
1	12	140	2
1	13	139	2
1	14	-	2
1	15	-	2
1	16	-	2

Pin Descriptions (Continued)

Function Block	Macrocell	TQG144	I/O Bank
2(GTS2)	1	2	2
2	2	-	2
2(GTS3)	3	3	2
2	4	4	2
2(GTS0)	5	5	2
2	6	-	-
2	7	-	-
2	8	-	-
2	9	-	-
2	10	-	-
2	11	-	-
2	12	-	2
2	13	-	2
2	14	-	2
2(GTS1)	15	6	2
2	16	7	2

### Pin Descriptions (Continued)

Function Block	Macrocell	TQG144	I/O Bank
3	1	-	2
3	2	-	2
3	3	138	2
3	4	137	2
3	5	136	2
3	6	-	-
3	7	-	-
3	8	-	-
3	9	-	-
3	10	-	-
3	11	-	-
3	12	135	2
3	13	-	2
3	14	-	2
3	15	-	2
3	16	134	2
4	1	9	2
4	2	10	2
4	3	11	2
4	4	12	2
4	5	-	2
4	6	-	-
4	7	-	-
4	8	-	-
4	9	-	-
4	10	-	-
4	11	-	-
4	12	-	2
4	13	-	2
4	14	-	2
4	15	-	2
4	16	-	2

### Pin Descriptions (Continued)

Function Block	Macrocell	TQG144	I/O Bank
5	1	-	2
5	2	133	2
5	3	132	2
5	4	-	2
5	5	-	2
5	6	-	-
5	7	-	-
5	8	-	-
5	9	-	-
5	10	-	-
5	11	-	-
5	12	-	2
5	13	131	2
5	14	-	2
5	15	130	2
5	16	129	2
6	1	-	2
6	2	13	2
6	3	14	2
6	4	15	2
6	5	-	2
6	6	-	-
6	7	-	-
6	8	-	-
6	9	-	-
6	10	-	-
6	11	-	-
6	12	-	2
6	13	16	2
6	14	17	2
6	15	-	2
6	16	18	2

**Pin Descriptions (Continued)**

Function Block	Macrocell	TQG144	I/O Bank
7(CDRST)	1	35	1
7	2	-	1
7	3	-	1
7	4	34	1
7	5	33	1
7	6	-	-
7	7	-	-
7	8	-	-
7	9	-	-
7	10	-	-
7	11	-	-
7(GCK1)	12	32	1
7	13	-	1
7	14	31	1
7(GCK0)	15	30	1
7	16	-	1
8	1	-	1
8(GCK2)	2	38	1
8	3	-	1
8	4	-	1
8(DGE)	5	39	1
8	6	-	-
8	7	-	-
8	8	-	-
8	9	-	-
8	10	-	-
8	11	-	-
8	12	-	1
8	13	40	1
8	14	41	1
8	15	42	1
8	16	43	1

**Pin Descriptions (Continued)**

Function Block	Macrocell	TQG144	I/O Bank
9	1	-	1
9	2	28	1
9	3	-	1
9	4	-	1
9	5	-	1
9	6	-	-
9	7	-	-
9	8	-	-
9	9	-	-
9	10	-	-
9	11	--	-
9	12	-	1
9	13	-	1
9	14	-	1
9	15	26	1
9	16	25	1
10	1	44	1
10	2	45	1
10	3	-	1
10	4	46	1
10	5	-	1
10	6	-	-
10	7	-	-
10	8	-	-
10	9	-	-
10	10	-	-
10	11	-	-
10	12	-	1
10	13	-	1
10	14	48	1
10	15	49	1
10	16	50	1

### Pin Descriptions (Continued)

Function Block	Macrocell	TQG144	I/O Bank
11	1	24	1
11	2	23	1
11	3	22	1
11	4	21	1
11	5	20	1
11	6	-	-
11	7	-	-
11	8	-	-
11	9	-	-
11	10	-	-
11	11	-	-
11	12	19	1
11	13	-	1
11	14	-	1
11	15	-	1
11	16	-	1
12	1	51	1
12	2	52	1
12	3	53	1
12	4	-	1
12	5	54	1
12	6	-	-
12	7	-	-
12	8	-	-
12	9	-	-
12	10	-	-
12	11	-	-
12	12	-	1
12	13	-	1
12	14	-	1
12	15	-	1
12	16	-	1

### Pin Descriptions (Continued)

Function Block	Macrocell	TQG144	I/O Bank
13	1	-	4
13	2	-	4
13	3	112	4
13	4	113	4
13	5	-	4
13	6	-	-
13	7	-	-
13	8	-	-
13	9	-	-
13	10	-	-
13	11	-	-
13	12	114	4
13	13	115	4
13	14	-	4
13	15	-	4
13	16	-	4
14	1	111	4
14	2	110	4
14	3	107	4
14	4	106	4
14	5	105	4
14	6	-	-
14	7	-	-
14	8	-	-
14	9	-	-
14	10	-	-
14	11	-	-
14	12	-	4
14	13	104	4
14	14	-	4
14	15	-	4
14	16	-	4

**Pin Descriptions (Continued)**

Function Block	Macrocell	TQG144	I/O Bank
15	1	-	4
15	2	116	4
15	3	-	4
15	4	-	4
15	5	117	4
15	6	-	-
15	7	-	-
15	8	-	-
15	9	-	-
15	10	-	-
15	11	-	-
15	12	-	4
15	13	118	4
15	14	-	4
15	15	119	4
15	16	120	4
16	1	103	4
16	2	-	4
16	3	102	4
16	4	-	4
16	5	-	4
16	6	-	-
16	7	-	-
16	8	-	-
16	9	-	-
16	10	-	-
16	11	-	-
16	12	-	4
16	13	-	4
16	14	101	4
16	15	-	4
16	16	100	4

**Pin Descriptions (Continued)**

Function Block	Macrocell	TQG144	I/O Bank
17	1	-	4
17	2	121	4
17	3	-	4
17	4	-	4
17	5	-	4
17	6	-	-
17	7	-	-
17	8	-	-
17	9	-	-
17	10	-	-
17	11	-	-
17	12	124	4
17	13	125	4
17	14	126	4
17	15	-	4
17	16	128	4
18	1	-	4
18	2	-	4
18	3	98	4
18	4	97	4
18	5	96	4
18	6	-	-
18	7	-	-
18	8	-	-
18	9	-	-
18	10	-	-
18	11	-	-
18	12	95	4
18	13	94	4
18	14	-	4
18	15	-	4
18	16	-	4

### Pin Descriptions (Continued)

Function Block	Macrocell	TQG144	I/O Bank
19	1	-	3
19	2	-	3
19	3	74	3
19	4	75	3
19	5	76	3
19	6	-	-
19	7	-	-
19	8	-	-
19	9	-	-
19	10	-	-
19	11	-	-
19	12	77	3
19	13	78	3
19	14	79	3
19	15	-	3
19	16	-	3
20	1	71	3
20	2	70	3
20	3	69	3
20	4	68	3
20	5	66	3
20	6	-	-
20	7	-	-
20	8	-	-
20	9	-	-
20	10	-	-
20	11	-	-
20	12	-	3
20	13	64	3
20	14	-	3
20	15	-	3
20	16	-	3

### Pin Descriptions (Continued)

Function Block	Macrocell	TQG144	I/O Bank
21	1	80	3
21	2	-	3
21	3	81	3
21	4	-	3
21	5	-	3
21	6	-	-
21	7	-	-
21	8	-	-
21	9	-	-
21	10	-	-
21	11	-	-
21	12	82	3
21	13	-	3
21	14	-	3
21	15	83	3
21	16	-	3
22	1	-	3
22	2	61	3
22	3	-	3
22	4	-	3
22	5	-	3
22	6	-	-
22	7	-	-
22	8	-	-
22	9	-	-
22	10	-	-
22	11	-	-
22	12	60	3
22	13	-	3
22	14	59	3
22	15	-	3
22	16	-	3

**Pin Descriptions (Continued)**

Function Block	Macrocell	TQG144	I/O Bank
23	1	-	3
23	2	-	3
23	3	85	3
23	4	86	3
23	5	87	3
23	6	-	-
23	7	-	-
23	8	-	-
23	9	-	-
23	10	-	-
23	11	-	-
23	12	88	3
23	13	91	3
23	14	92	3
23	15	-	3
23	16	-	3

**Pin Descriptions (Continued)**

Function Block	Macrocell	TQG144	I/O Bank
24	1	-	3
24	2	58	3
24	3	-	3
24	4	-	3
24	5	-	3
24	6	-	-
24	7	-	-
24	8	-	-
24	9	-	-
24	10	-	-
24	11	-	-
24	12	57	3
24	13	-	3
24	14	56	3
24	15	-	3
24	16	-	3

**Notes:**

1. GTS = global output enable, GSR = global reset/set, GCK = global clock, CDRST = clock divide reset, DGE = DataGATE enable.
2. GCK, GSR, and GTS pins can also be used for general purpose I/O.

**XA2C384 JTAG, Power/Ground, No Connect Pins and Total User I/O**

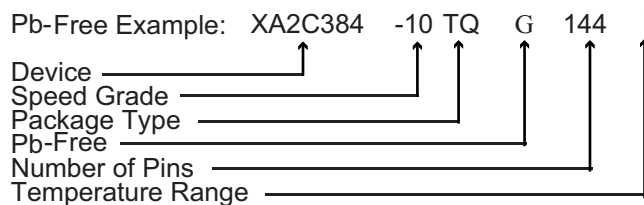
Pin Type	TQG144
TCK	67
TDI	63
TDO	122
TMS	65
V <sub>CCAUX</sub> (JTAG supply voltage)	8
Power internal (V <sub>CC</sub> )	1, 37, 84
Power Bank 1 I/O (V <sub>CCIO1</sub> )	27, 55
Power Bank 2 I/O (V <sub>CCIO2</sub> )	141
Power Bank 3 I/O (V <sub>CCIO3</sub> )	73, 93
Power Bank 4 I/O (V <sub>CCIO4</sub> )	109, 127
Ground	29, 36, 47, 62, 72, 89, 90, 99, 108, 123, 144
No connects	-
Total user I/O (includes dual function pins)	118

## Ordering Information

Part Number	Pin/Ball Spacing	$\theta_{JA}$ (C/Watt)	$\theta_{JC}$ (C/Watt)	Package Type	Package Body Dimensions	I/O	Ind. (I) <sup>(1)</sup> Hi-T (Q)
XA2C384-10TQG144I	0.5mm	34.1	6.5	Plastic Quad Flat Pack; Pb-free	20mm x 20mm	118	I
XA2C384-11TQG144Q	0.5mm	34.1	6.5	Plastic Quad Flat Pack; Pb-free	20mm x 20mm	118	Q

### Notes:

- I = Industrial ( $T_A = -40^\circ\text{C}$  to  $+85^\circ\text{C}$ ); Q = Automotive ( $T_A = -40^\circ\text{C}$  to  $+105^\circ\text{C}$  with  $T_J$  Maximum =  $+125^\circ\text{C}$ ).



## Device Part Marking

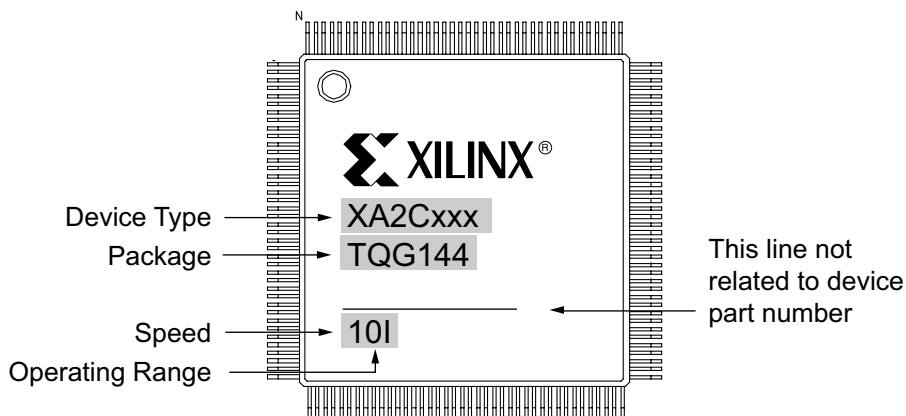


Figure 5: Sample Package with Part Marking



through a resistor externally to  $V_{CC}$ . Consequently, this will give the brightest solution.

5. Avoid pull-down resistors. Always use external pull-up resistors if external termination is required. This is because the CoolRunner-II Automotive CPLD, which includes some I/O driving circuits beyond the input and output buffers, may have contention with external pull-down resistors, and, consequently, the I/O will not switch as expected.
6. Do not drive I/Os pins above the  $V_{CCIO}$  assigned to its I/O bank.
  - a. The current flow can go into  $V_{CCIO}$  and affect a user voltage regulator.
  - b. It can also increase undesired leakage current associated with the device.
  - c. If done for too long, it can reduce the life of the device.
7. Do not rely on the I/O states before the CPLD configures. During power up, the CPLD I/Os may be affected by internal or external signals.
8. Use a voltage regulator which can provide sufficient current during device power up. As a rule of thumb, the regulator needs to provide at least three times the peak current while powering up a CPLD in order to guarantee the CPLD can configure successfully.
9. Ensure external JTAG terminations for TMS, TCK, TDI, TDO should comply with the IEEE 1149.1. All Xilinx CPLDs have internal weak pull-ups on TDI, TMS, and TCK.
10. Attach all CPLD  $V_{CC}$  and GND pins in order to have necessary power and ground supplies around the CPLD.
11. Decouple all  $V_{CC}$  and  $V_{CCIO}$  pins with capacitors of 0.01  $\mu\text{F}$  and 0.1  $\mu\text{F}$  closest to the pins for each  $V_{CC}/V_{CCIO}$ -GND pair.
12. Configure I/Os properly. CoolRunner-II Automotive CPLDs have I/O banks; therefore, signals must be assigned to appropriate banks (LVCMOS33, LVCMOS18 ...)

## Recommendations

The following recommendations are for all automotive applications.

1. Use strict synchronous design (only one clocking event) if possible. A synchronous system is more robust than an asynchronous one.
2. Include JTAG stakes on the PCB. JTAG stakes can be used to test the part on the PCB. They add benefit in reprogramming part on the PCB, inspecting chip internals with INTEST, identifying stuck pins, and inspecting programming patterns (if not secured).
3. CoolRunner-II Automotive CPLDs work with any power sequence, but it is preferable to power the  $V_{CCI}$  (internal  $V_{CC}$ ) before the  $V_{CCIO}$  for the applications in which any glitches from device I/Os are unwanted.
4. Do not disregard report file warnings. Software identifies potential problems when compiling, so the report file is worth inspecting to see exactly how your design is mapped onto the logic.
5. Understand the Timing Report. This report file provides a speed summary along with warnings. Read the timing file (\*.tim) carefully. Analyze key signal chains to determine limits to given clock(s) based on logic analysis.
6. Review Fitter Report equations. Equations can be shown in ABEL-like format, or can also be displayed in Verilog or VHDL formats. The Fitter Report also includes switch settings that are very informative of other device behaviors.
7. Let design software define pinouts if possible. Xilinx CPLD software works best when it selects the I/O pins and manages resources for users. It can spread signals around and improve pin-locking. If users must define pins, plan resources in advance.
8. Perform a post-fit simulation for all speeds to identify any possible problems (such as race conditions) that might occur when fast-speed silicon is used instead of slow-speed silicon.
9. Distribute SSOs (Simultaneously Switching Outputs) evenly around the CPLD to reduce switching noise.
10. Terminate high speed outputs to eliminate noise caused by very fast rising/falling edges.

---



---

## Automotive Warranty Disclaimer

THIS WARRANTY DOES NOT EXTEND TO ANY IMPLEMENTATION IN AN APPLICATION OR ENVIRONMENT THAT IS NOT CONTAINED WITHIN XILINX SPECIFICATIONS. PRODUCTS ARE NOT DESIGNED TO BE FAIL-SAFE AND ARE NOT WARRANTED FOR USE IN THE DEPLOYMENT OF AIRBAGS. FURTHER, PRODUCTS ARE NOT WARRANTED FOR USE IN APPLICATIONS THAT AFFECT CONTROL OF THE VEHICLE UNLESS THERE IS A FAIL-SAFE OR REDUNDANCY FEATURE AND ALSO A WARNING SIGNAL TO THE OPERATOR OF THE VEHICLE UPON FAILURE.

USE OF PRODUCTS IN SUCH APPLICATIONS IS FULLY AT THE RISK OF CUSTOMER SUBJECT TO APPLICABLE LAWS AND REGULATIONS GOVERNING LIMITATIONS ON PRODUCT LIABILITY.

## Additional Information

Additional information is available for the following CoolRunner-II topics:

- XAPP784: Bulletproof CPLD Design Practices
- XAPP375: Timing Model
- XAPP376: Logic Engine
- XAPP378: Advanced Features
- XAPP382: I/O Characteristics
- XAPP389: Powering CoolRunner-II
- XAPP399: Assigning VREF Pins

To access these and all application notes with their associated reference designs, click the following link and scroll down the page until you find the document you want:

[CoolRunner-II Data Sheets and Application Notes Device Packages](#)

## Revision History

The following table shows the revision history for this document.

Date	Version	Revision
10/31/06	1.0	Initial Xilinx release
05/05/07	1.1	Change to $V_{IH}$ specification for 3.3V, 2.5V and 1.8V LVCMOS.

## OUR CERTIFICATE

DiGi provide top-quality products and perfect service for customer worldwide through standardization, technological innovation and continuous improvement. DiGi through third-party certification, we strictly control the quality of products and services. Welcome your RFQ to

Email: [Info@DiGi-Electronics.com](mailto:Info@DiGi-Electronics.com)



Tel: +00 852-30501935

RFQ Email: [Info@DiGi-Electronics.com](mailto:Info@DiGi-Electronics.com)

DiGi is a global authorized distributor of electronic components.