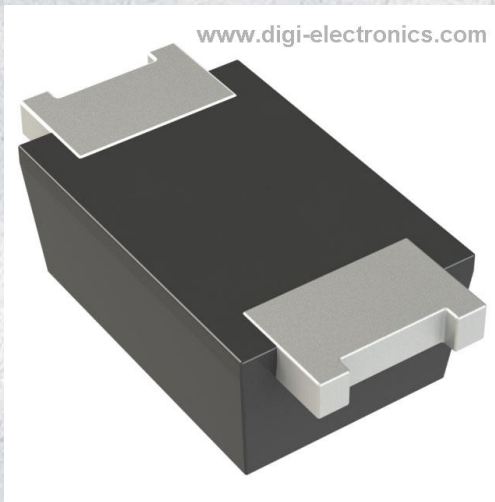


BZT52HC12WF-7 Datasheet



<https://www.DiGi-Electronics.com>

| | |
|------------------------------|--|
| DiGi Electronics Part Number | BZT52HC12WF-7-DG |
| Manufacturer | Diodes Incorporated |
| Manufacturer Product Number | BZT52HC12WF-7 |
| Description | DIODE ZENER 12V 375MW SOD123F |
| Detailed Description | Zener Diode 12 V 375 mW \pm 5.42% Surface Mount SOD-123F |

This model BZT52HC12WF-7 is available at DiGi Electronics.

DiGi Electronics offers a global database of semiconductor and electronic component datasheets.

We welcome your inquiries regarding pricing, lead time, or other product-related questions.

 [Request a Quote](#)

 [Datasheet Search](#)



Tel: +00 852-30501935

RFQ Email: Info@DiGi-Electronics.com

DiGi is a global authorized distributor of electronic components.

Purchase and inquiry

Manufacturer Product Number:

BZT52HC12WF-7

Series:

-

Voltage - Zener (Nom) (Vz):

12 V

Power - Max:

375 mW

Current - Reverse Leakage @ Vr:

100 nA @ 8 V

Operating Temperature:

-65°C ~ 150°C

Qualification:

AEC-Q101

Package / Case:

SOD-123F

Base Product Number:

BZT52

Manufacturer:

Diodes Incorporated

Product Status:

Active

Tolerance:

±5.42%

Impedance (Max) (Zzt):

10 Ohms

Voltage - Forward (Vf) (Max) @ If:

900 mV @ 10 mA

Grade:

Automotive

Mounting Type:

Surface Mount

Supplier Device Package:

SOD-123F

Environmental & Export classification

RoHS Status:

ROHS3 Compliant

REACH Status:

REACH Unaffected

HTSUS:

8541.10.0050

Moisture Sensitivity Level (MSL):

1 (Unlimited)

ECCN:

EAR99


BZT52HC2V4WF - BZT52HC47WF
SURFACE MOUNT ZENER DIODE
Features

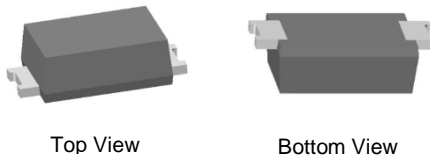
- Flat Lead Package Design for Low Profile and High Power Dissipation
- **Totally Lead-Free & Fully RoHS Compliant (Notes 1 & 2)**
- **Halogen and Antimony Free. "Green" Device (Note 3)**
- **Qualified to AEC-Q101 Standards for High Reliability**

Mechanical Data

- Case: SOD123F (Type B)
- Case Material: Molded Plastic, "Green" Molding Compound. UL Flammability Classification Rating 94V-0
- Moisture Sensitivity: Level 1 per J-STD-020
- Terminal Connections: Cathode Band
- Terminals: Finish - Matte Tin Annealed over Copper Alloy Leadframe. Solderable per MIL-STD-202, Method 208 **e3**
- Polarity: Cathode Band
- Weight: 0.015 grams (Approximate)

NEW PRODUCT

SOD123F (Type B)



Top View

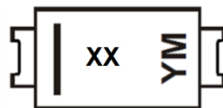
Bottom View

Ordering Information (Note 4)

| Part Number | Compliance | Case | Packaging |
|------------------|------------|------------------|-------------------|
| (Type Number)-7* | AEC-Q101 | SOD123F (Type B) | 3,000/Tape & Reel |

*Add "-7" to the appropriate type number in Electrical Characteristics Table, example: 6.2V Zener = BZT52HC6V2WF-7.

- Notes:
1. No purposely added lead. Fully EU Directive 2002/95/EC (RoHS) & 2011/65/EU (RoHS 2) compliant.
 2. See http://www.diodes.com/quality/lead_free.html for more information about Diodes Incorporated's definitions of Halogen- and Antimony-free, "Green" and Lead-free.
 3. Halogen- and Antimony-free "Green" products are defined as those which contain <900ppm bromine, <900ppm chlorine (<1500ppm total Br + Cl) and <1000ppm antimony compounds.
 4. For packaging details, go to our website at <http://www.diodes.com/products/packages.html>.

Marking Information


XX = Product Type Marking Code
(See Electrical Characteristics Table)
YM = Date Code Marking
Y = Year (ex: C = 2015)
M = Month (ex: 9 = September)

Date Code Key

| Year | 2015 | 2016 | 2017 | 2018 | 2019 | 2020 | 2021 |
|------|------|------|------|------|------|------|------|
| Code | C | D | E | F | G | H | I |

| Month | Jan | Feb | Mar | Apr | May | Jun | Jul | Aug | Sep | Oct | Nov | Dec |
|-------|-----|-----|-----|-----|-----|-----|-----|-----|-----|-----|-----|-----|
| Code | 1 | 2 | 3 | 4 | 5 | 6 | 7 | 8 | 9 | O | N | D |



| |
|-----------------------------------|
| BZT52HC2V4WF - BZT52HC47WF |
|-----------------------------------|

Maximum Ratings (@T_A = +25°C, unless otherwise specified.)

| Characteristic | Symbol | Value | Unit |
|--|----------------|-------|------|
| Forward Voltage (Note 5) @ I _F = 10mA | V _F | 0.9 | V |
| Forward Current | I _F | 250 | mA |

Thermal Characteristics

| Characteristic | Symbol | Value | Unit |
|--|-----------------------------------|-------------|------|
| Power Dissipation (Note 6) | P _D | 375 | mW |
| Power Dissipation (Note 7) | P _D | 830 | mW |
| Thermal Resistance, Junction to Ambient Air (Note 6) | R _{θJA} | 330 | °C/W |
| Thermal Resistance, Junction to Ambient Air (Note 7) | R _{θJA} | 150 | °C/W |
| Operating and Storage Temperature Range | T _J , T _{STG} | -65 to +150 | °C |

- Note:
5. Short duration pulse test used to minimize self-heating effect.
 6. Device mounted on FR-4 PCB with minimum recommended pad layout, as shown in Diodes Incorporated's Suggested Pad Layout document, which can be found on our website at <http://www.diodes.com/package-outlines.html>.
 7. Device mounted on FR-4 PCB with mounting pad for cathode 1cm².

NEW PRODUCT



BZT52HC2V4WF - BZT52HC47WF

Electrical Characteristics (@T_A = +25°C, unless otherwise specified.)

| Type Number | Marking Codes | Zener Voltage Range (Note 8) | | | Maximum Zener Impedance (Note 9) | | | Temperature Coefficient | | Total Capacitance | Maximum Reverse Current (Note 8) | |
|--------------|---------------|----------------------------------|---------|-----------------|-----------------------------------|-----------------------------------|-----------------|----------------------------------|-------------|--|----------------------------------|------------------|
| | | V _Z @ I _{ZT} | | I _{ZT} | Z _{ZT} @ I _{ZT} | Z _{ZK} @ I _{ZK} | I _{ZK} | T _C @ I _{ZT} | | C _T @ f = 1MHz, V _R = 0V | I _R | @ V _R |
| | | Min (V) | Max (V) | mA | Ω | | | mA | Min (mV/°C) | Max (mV/°C) | Max (pF) | μA |
| BZT52HC2V4WF | WX | 2.2 | 2.6 | 5 | 85 | 400 | 1 | -3.5 | 0.0 | 450 | 50 | 1 |
| BZT52HC2V7WF | W1 | 2.5 | 2.9 | 5 | 83 | 500 | 1 | -3.5 | 0.0 | 450 | 20 | 1 |
| BZT52HC3V0WF | W2 | 2.8 | 3.2 | 5 | 95 | 500 | 1 | -3.5 | 0.0 | 450 | 10 | 1 |
| BZT52HC3V3WF | W3 | 3.1 | 3.5 | 5 | 95 | 500 | 1 | -3.5 | 0.0 | 450 | 5 | 1 |
| BZT52HC3V6WF | W4 | 3.4 | 3.8 | 5 | 95 | 500 | 1 | -3.5 | 0.0 | 450 | 5 | 1 |
| BZT52HC3V9WF | W5 | 3.7 | 4.1 | 5 | 95 | 500 | 1 | -3.5 | 0.0 | 450 | 3 | 1 |
| BZT52HC4V3WF | W6 | 4.0 | 4.6 | 5 | 95 | 500 | 1 | -3.5 | 0.0 | 450 | 3 | 1 |
| BZT52HC4V7WF | W7 | 4.4 | 5.0 | 5 | 78 | 500 | 1 | -3.5 | 0.2 | 300 | 3 | 2 |
| BZT52HC5V1WF | W8 | 4.8 | 5.4 | 5 | 60 | 480 | 1 | -2.7 | 1.2 | 300 | 2 | 2 |
| BZT52HC5V6WF | W9 | 5.2 | 6.0 | 5 | 40 | 400 | 1 | -2.0 | 2.5 | 300 | 1 | 2 |
| BZT52HC6V2WF | WA | 5.8 | 6.6 | 5 | 10 | 150 | 1 | 0.4 | 3.7 | 200 | 3 | 4 |
| BZT52HC6V8WF | WB | 6.4 | 7.2 | 5 | 8 | 80 | 1 | 1.2 | 4.5 | 200 | 2 | 4 |
| BZT52HC7V5WF | WC | 7.0 | 7.9 | 5 | 10 | 80 | 1 | 2.5 | 5.3 | 150 | 1 | 5 |
| BZT52HC8V2WF | WD | 7.7 | 8.7 | 5 | 10 | 80 | 1 | 3.2 | 6.2 | 150 | 0.7 | 5 |
| BZT52HC9V1WF | WE | 8.5 | 9.6 | 5 | 10 | 100 | 1 | 3.8 | 7.0 | 150 | 0.5 | 6 |
| BZT52HC10WF | WF | 9.4 | 10.6 | 5 | 10 | 70 | 1 | 4.5 | 8.0 | 90 | 0.2 | 7 |
| BZT52HC11WF | WG | 10.4 | 11.6 | 5 | 10 | 70 | 1 | 5.4 | 9.0 | 85 | 0.1 | 8 |
| BZT52HC12WF | WH | 11.4 | 12.7 | 5 | 10 | 90 | 1 | 6.0 | 10.0 | 85 | 0.1 | 8 |
| BZT52HC13WF | WI | 12.4 | 14.1 | 5 | 10 | 110 | 1 | 7.0 | 11.0 | 80 | 0.1 | 8 |
| BZT52HC15WF | WJ | 13.8 | 15.6 | 5 | 15 | 110 | 1 | 9.2 | 13.0 | 75 | 0.05 | 10.5 |
| BZT52HC16WF | WK | 15.3 | 17.1 | 5 | 20 | 170 | 1 | 10.4 | 14.0 | 75 | 0.05 | 11.2 |
| BZT52HC18WF | WL | 16.8 | 19.1 | 5 | 20 | 170 | 1 | 12.4 | 16.0 | 70 | 0.05 | 12.6 |
| BZT52HC20WF | WM | 18.8 | 21.2 | 5 | 20 | 220 | 1 | 14.4 | 18.0 | 60 | 0.05 | 14.0 |
| BZT52HC22WF | WN | 20.8 | 23.3 | 5 | 25 | 220 | 1 | 16.4 | - | 60 | 0.05 | 15.4 |
| BZT52HC24WF | WO | 22.8 | 25.6 | 5 | 30 | 220 | 1 | 18.4 | - | 55 | 0.05 | 16.8 |
| BZT52HC27WF | WP | 25.1 | 28.9 | 2 | 40 | 250 | 1 | 21.4 | - | 50 | 0.05 | 18.9 |
| BZT52HC30WF | WQ | 28.0 | 32.0 | 2 | 40 | 250 | 1 | 24.4 | - | 50 | 0.05 | 21.0 |
| BZT52HC33WF | WR | 31.0 | 35.0 | 2 | 40 | 250 | 1 | 27.4 | - | 45 | 0.05 | 23.1 |
| BZT52HC36WF | WS | 34.0 | 38.0 | 2 | 60 | 250 | 1 | 30.4 | - | 45 | 0.05 | 25.2 |
| BZT52HC39WF | WT | 37.0 | 41.0 | 2 | 75 | 300 | 1 | 33.4 | - | 45 | 0.05 | 27.3 |
| BZT52HC43WF | WU | 40.0 | 46.0 | 2 | 80 | 325 | 1 | 37.6 | - | 40 | 0.05 | 30.1 |
| BZT52HC47WF | WV | 44.0 | 50.0 | 2 | 90 | 325 | 1 | 42.0 | - | 40 | 0.05 | 32.9 |

Notes: 8. Short duration pulse test used to minimize self-heating effect.
9. f = 1kHz.

NEW PRODUCT



BZT52HC2V4WF - BZT52HC47WF

NEW PRODUCT

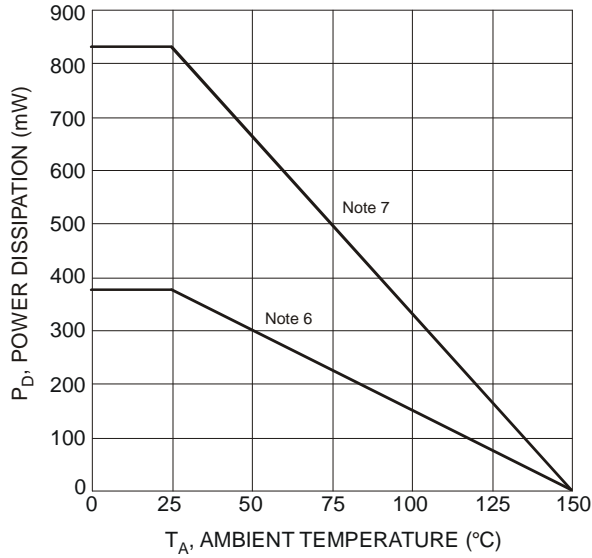


Figure 1 Power Derating Curve

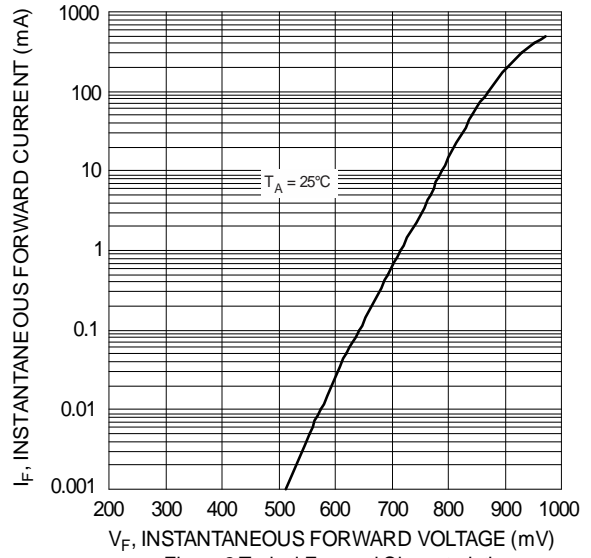


Figure 2 Typical Forward Characteristics

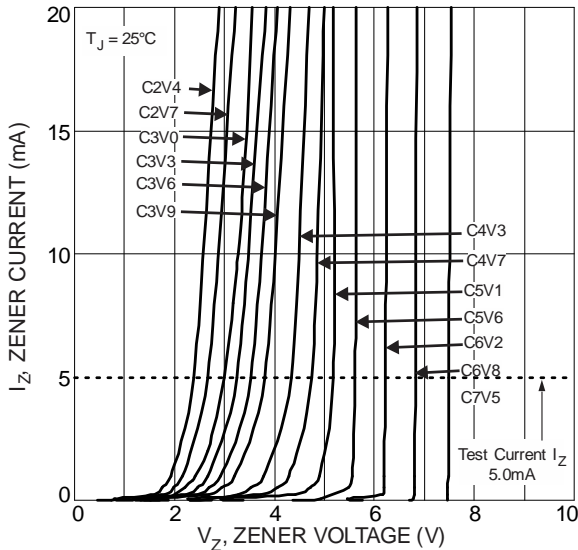


Figure 3 Typical Zener Breakdown Characteristics

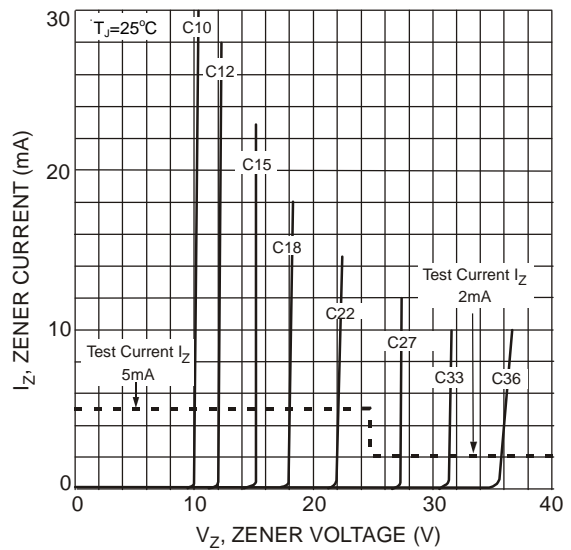
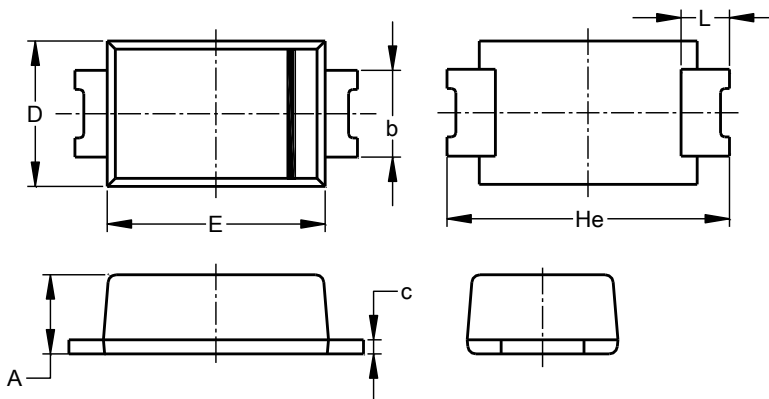


Figure 4 Typical Zener Breakdown Characteristics

Package Outline Dimensions

Please see <http://www.diodes.com/package-outlines.html> for the latest version.



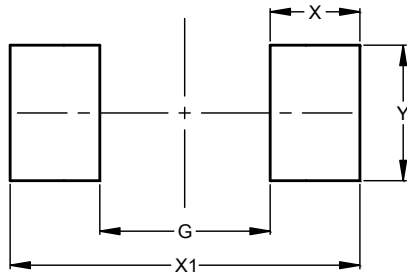
| SOD123F (Type B) | | | |
|----------------------|------|------|------|
| Dim | Min | Max | Typ |
| A | 0.81 | 1.15 | - |
| b | 0.80 | 1.35 | - |
| c | 0.05 | 0.30 | - |
| D | 1.70 | 1.90 | 1.80 |
| E | 2.60 | 2.80 | 2.70 |
| He | 3.30 | 3.70 | 3.50 |
| L | 0.35 | 0.85 | - |
| All Dimensions in mm | | | |



BZT52HC2V4WF - BZT52HC47WF

Suggested Pad Layout

Please see <http://www.diodes.com/package-outlines.html> for the latest version.



| Dimensions | Value (in mm) |
|------------|---------------|
| G | 1.90 |
| X | 1.00 |
| X1 | 3.90 |
| Y | 1.50 |

IMPORTANT NOTICE

DIODES INCORPORATED MAKES NO WARRANTY OF ANY KIND, EXPRESS OR IMPLIED, WITH REGARDS TO THIS DOCUMENT, INCLUDING, BUT NOT LIMITED TO, THE IMPLIED WARRANTIES OF MERCHANTABILITY AND FITNESS FOR A PARTICULAR PURPOSE (AND THEIR EQUIVALENTS UNDER THE LAWS OF ANY JURISDICTION).

Diodes Incorporated and its subsidiaries reserve the right to make modifications, enhancements, improvements, corrections or other changes without further notice to this document and any product described herein. Diodes Incorporated does not assume any liability arising out of the application or use of this document or any product described herein; neither does Diodes Incorporated convey any license under its patent or trademark rights, nor the rights of others. Any Customer or user of this document or products described herein in such applications shall assume all risks of such use and will agree to hold Diodes Incorporated and all the companies whose products are represented on Diodes Incorporated website, harmless against all damages.

Diodes Incorporated does not warrant or accept any liability whatsoever in respect of any products purchased through unauthorized sales channel. Should Customers purchase or use Diodes Incorporated products for any unintended or unauthorized application, Customers shall indemnify and hold Diodes Incorporated and its representatives harmless against all claims, damages, expenses, and attorney fees arising out of, directly or indirectly, any claim of personal injury or death associated with such unintended or unauthorized application.

Products described herein may be covered by one or more United States, international or foreign patents pending. Product names and markings noted herein may also be covered by one or more United States, international or foreign trademarks.

This document is written in English but may be translated into multiple languages for reference. Only the English version of this document is the final and determinative format released by Diodes Incorporated.

LIFE SUPPORT

Diodes Incorporated products are specifically not authorized for use as critical components in life support devices or systems without the express written approval of the Chief Executive Officer of Diodes Incorporated. As used herein:

A. Life support devices or systems are devices or systems which:

1. are intended to implant into the body, or
2. support or sustain life and whose failure to perform when properly used in accordance with instructions for use provided in the labeling can be reasonably expected to result in significant injury to the user.

B. A critical component is any component in a life support device or system whose failure to perform can be reasonably expected to cause the failure of the life support device or to affect its safety or effectiveness.

Customers represent that they have all necessary expertise in the safety and regulatory ramifications of their life support devices or systems, and acknowledge and agree that they are solely responsible for all legal, regulatory and safety-related requirements concerning their products and any use of Diodes Incorporated products in such safety-critical, life support devices or systems, notwithstanding any devices- or systems-related information or support that may be provided by Diodes Incorporated. Further, Customers must fully indemnify Diodes Incorporated and its representatives against any damages arising out of the use of Diodes Incorporated products in such safety-critical, life support devices or systems.

Copyright © 2016, Diodes Incorporated

www.diodes.com

NEW PRODUCT

OUR CERTIFICATE

DiGi provide top-quality products and perfect service for customer worldwide through standardization, technological innovation and continuous improvement. DiGi through third-party certification, we strictly control the quality of products and services. Welcome your RFQ to

Email: Info@DiGi-Electronics.com



Tel: +00 852-30501935

RFQ Email: Info@DiGi-Electronics.com

DiGi is a global authorized distributor of electronic components.