

# HD-1003 Datasheet

[www.digi-electronics.com](http://www.digi-electronics.com)



DiGi Electronics Part Number	HD-1003-DG
Manufacturer	<a href="#">CIT Relay and Switch</a>
Manufacturer Product Number	HD-1003
Description	RELAY SOCKET AUTO PCB SERIES
Detailed Description	Relay Socket Through Hole

<https://www.DiGi-Electronics.com>

This model HD-1003 is available at DiGi Electronics.

DiGi Electronics offers a global database of semiconductor and electronic component datasheets.

We welcome your inquiries regarding pricing, lead time, or other product-related questions.

 [Request a Quote](#)

 [Datasheet Search](#)



Tel: +00 852-30501935

RFQ Email: [Info@DiGi-Electronics.com](mailto:Info@DiGi-Electronics.com)

DiGi is a global authorized distributor of electronic components.

## Purchase and inquiry

Manufacturer Product Number:

HD-1003

Series:

-

Type:

Socket

Mounting Type:

Through Hole

For Use With/Related Products:

-

Manufacturer:

CIT Relay and Switch

Product Status:

Active

Number of Positions:

5

Termination Style:

PC Pin

Features:

-

## Environmental & Export classification

RoHS Status:

RoHS Compliant

REACH Status:

REACH Unaffected

HTSUS:

8536.69.8000

Moisture Sensitivity Level (MSL):

1 (Unlimited)

ECCN:

EAR99

## Ordering Information

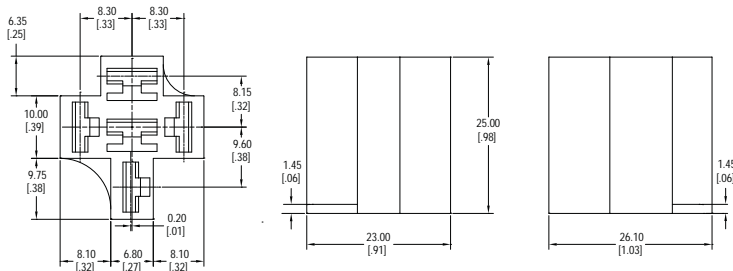
UL recognized sockets are shaded

	A2 / A9	J114FL / J114AF	J151 2C	J151 3C	J151 4C	J152 2C	J152 3C	J152 4C
<b>Panel Mount / Wire Assembly</b>	HD-1001 HD-1002 HD-1004		PT08			PY08	PY11	PY14
<b>PC Pin</b>	HD-1003	P2R05P P2R08P	PT08-0	PT11A		PY08-02	PY11-02	PY14-02
<b>DIN Rail Mountable</b>		P2F08S	PTF08A	PTF11A	PTF14A	PYF08A	PYF11A	PYF14A
<b>DIN Rail Mountable Finger Safe</b>		P2F08N	PTF08A-E			PYF08A-E	PYF11A-E	PYF14A-E

## Dimensions

Units = mm

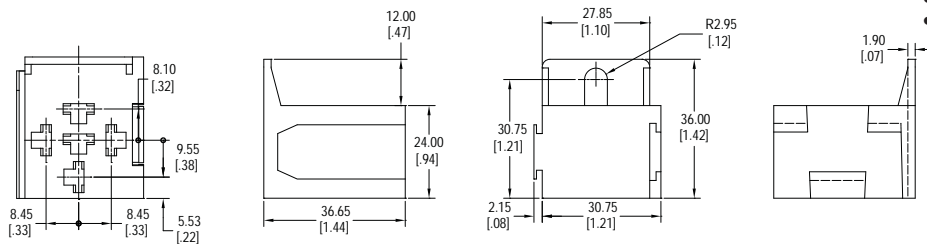
### HD-1001



\*\* The recommended female quick connects are AMP / Tyco :  
 • 60249-1 (12-16 AWG) or equivalent  
 • 42281-1 (14-18 AWG) or equivalent



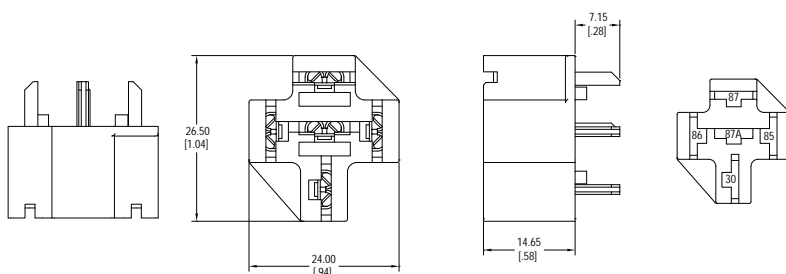
### HD-1002



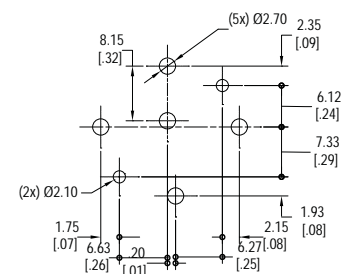
\*\* The recommended female quick connects are AMP / Tyco :  
 • 60249-1 (12-16 AWG) or equivalent  
 • 42281-1 (14-18 AWG) or equivalent



### HD-1003



### PCB Layout

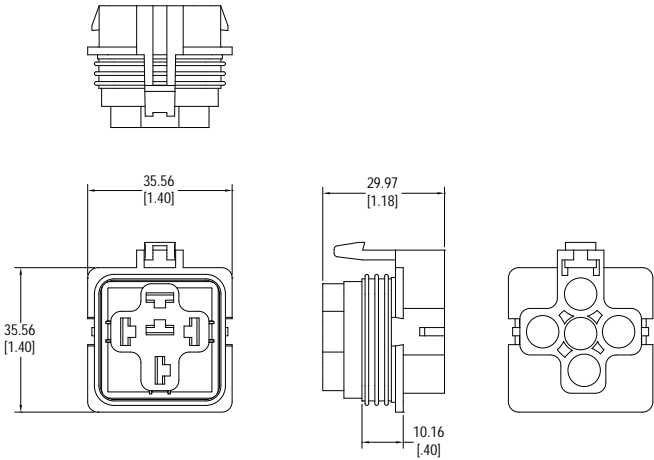


# Socket

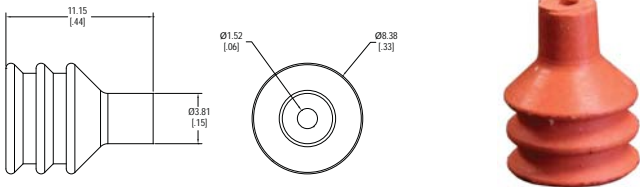
## Dimensions

Units = mm

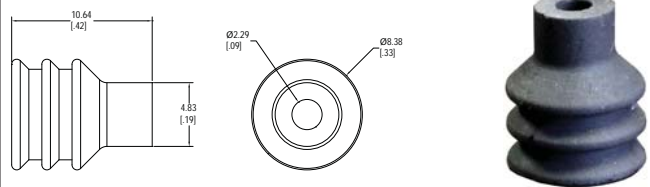
**HD-1004** Combination of five wire grommets required for HD-1004



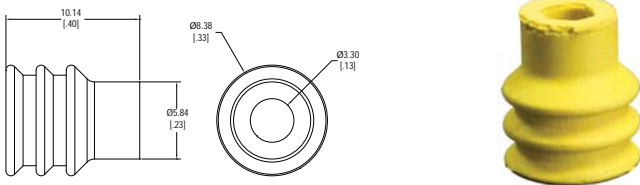
### HD-1004 Wire Grommet - HDWGA (18AWG)



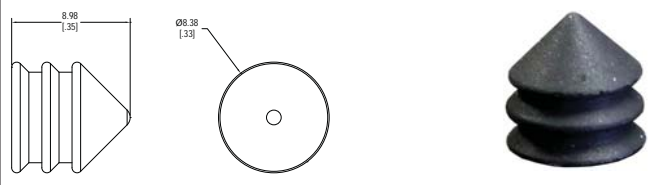
### HD-1004 Wire Grommet - HDWGB (14-16 AWG)



### HD-1004 Wire Grommet - HDWGC (12AWG)



### HD-1004 Wire Grommet - HDWGD (Plug)

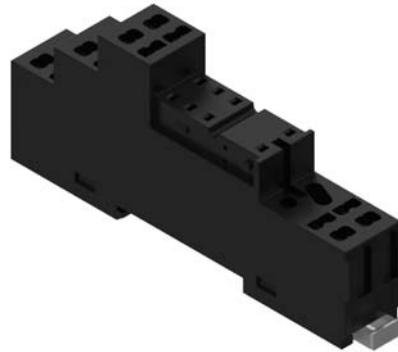
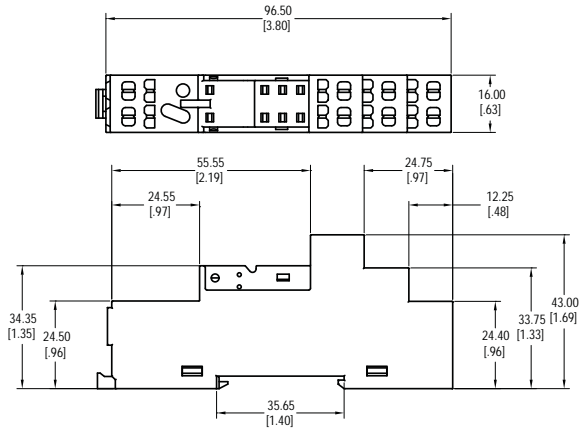


**\*Recommended female quick connect terminals**  
TE Connectivity 60253 (12-16AWG)  
TE Connectivity 42100 (14-18AWG)

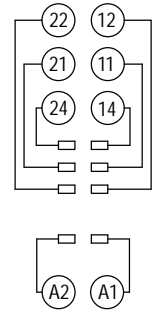
## Dimensions

Units = mm

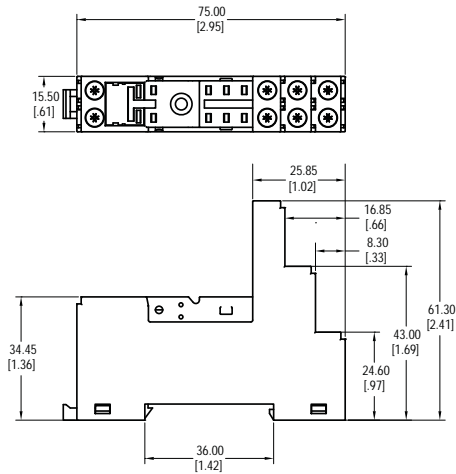
### P2F08N



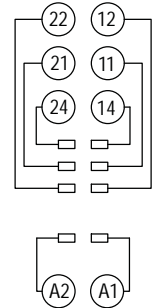
### Schematic



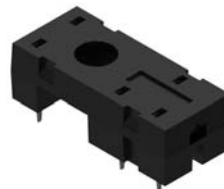
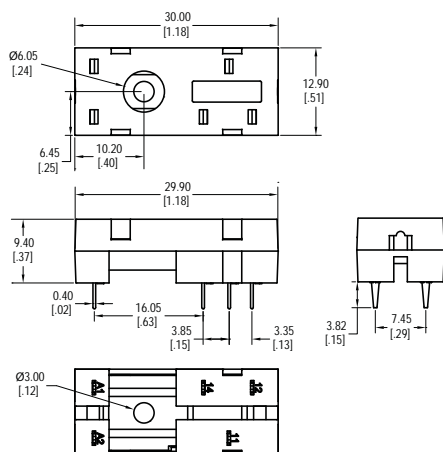
### P2F08S



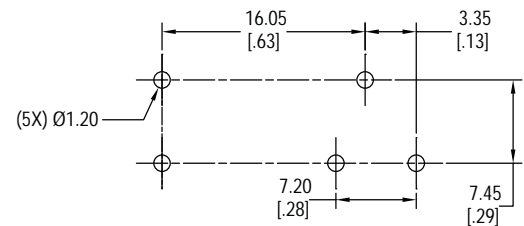
### Schematic



### P2R05P



### PCB Layout

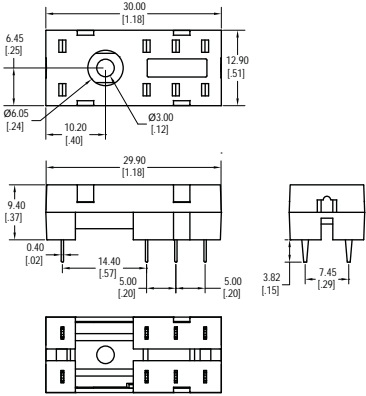


# Socket

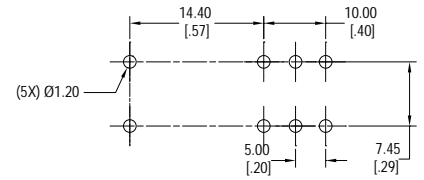
## Dimensions

Units = mm

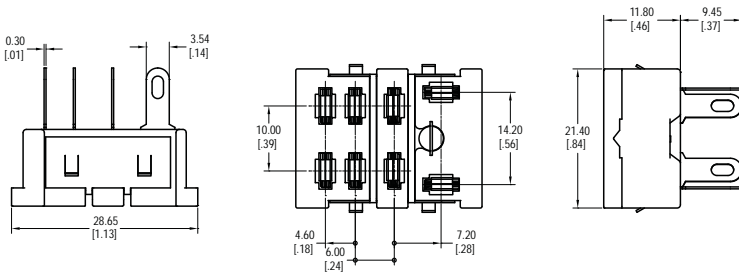
### P2R08P



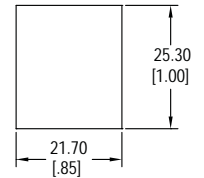
### PCB Layout



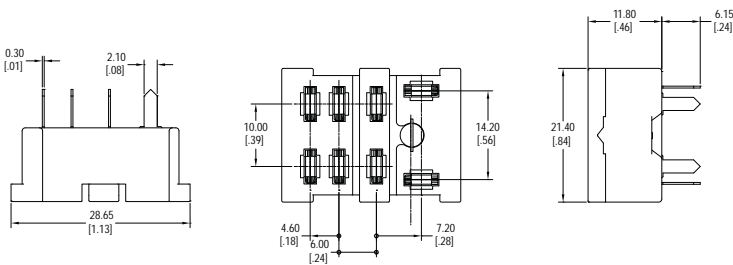
### PT08



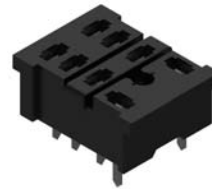
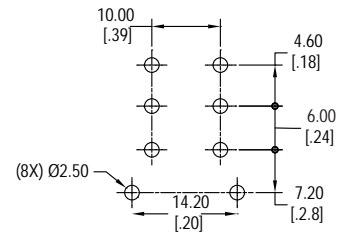
### Panel Cut-Out



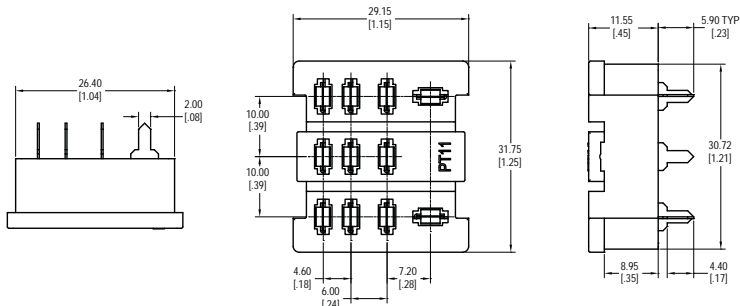
### PT08-0



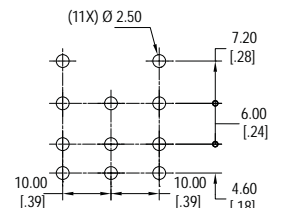
### PCB Layout



### PT11A



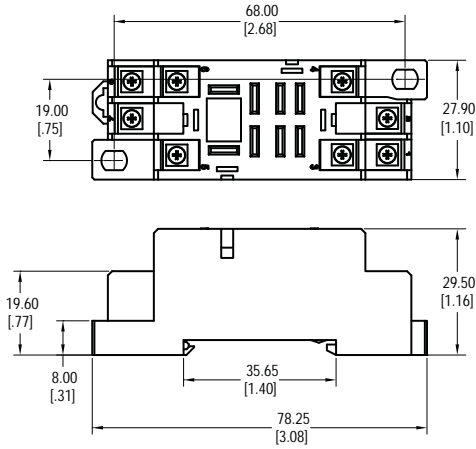
### PCB Layout



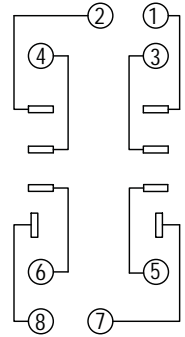
## Dimensions

Units = mm

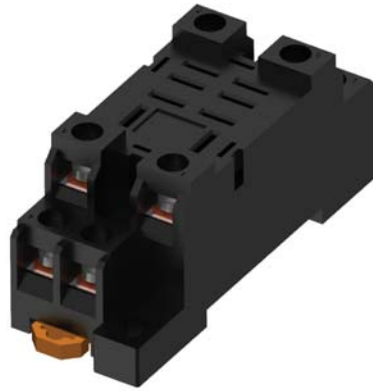
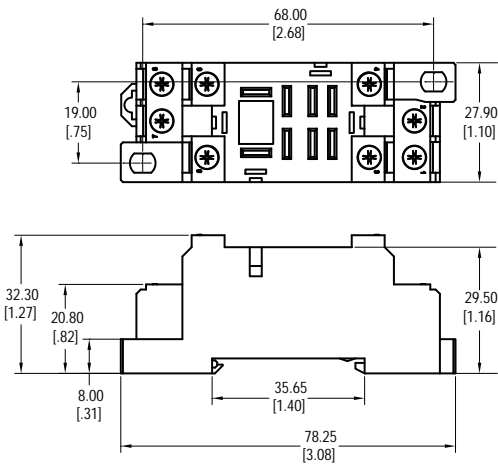
### PTF08A



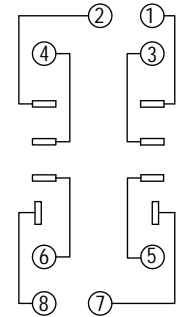
### Schematic



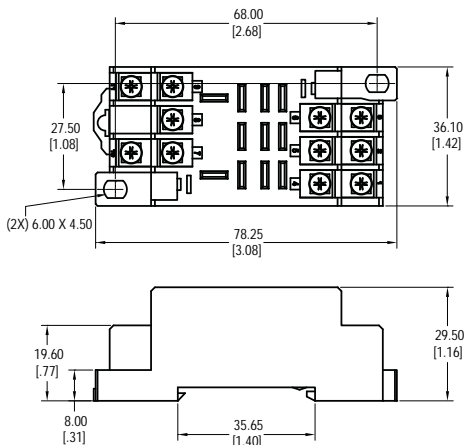
### PTF08A-E



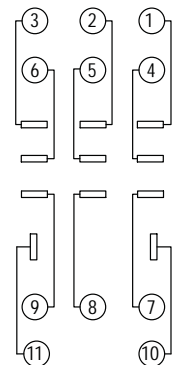
### Schematic



### PTF11A



### Schematic

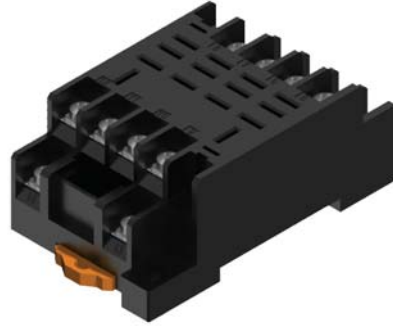
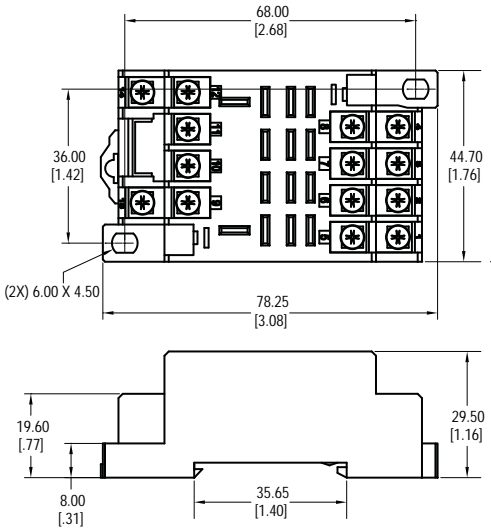


# Socket

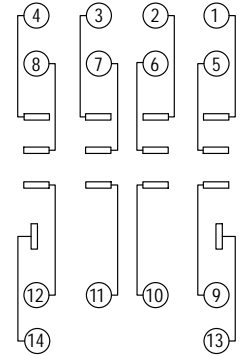
## Dimensions

Units = mm

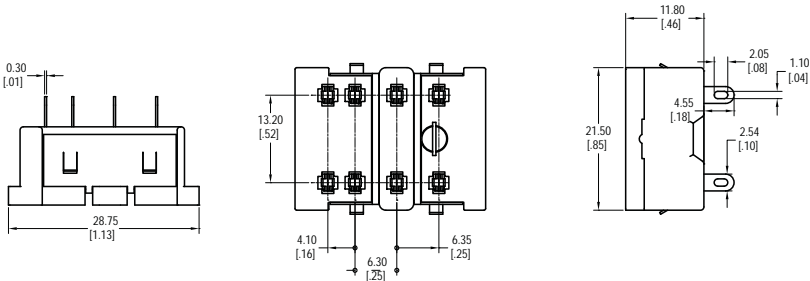
### PTF14A



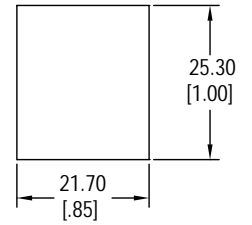
### Schematic



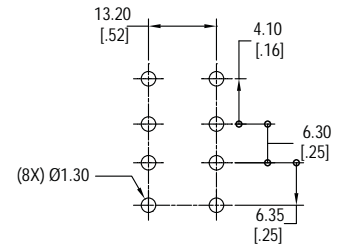
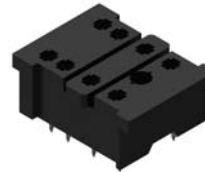
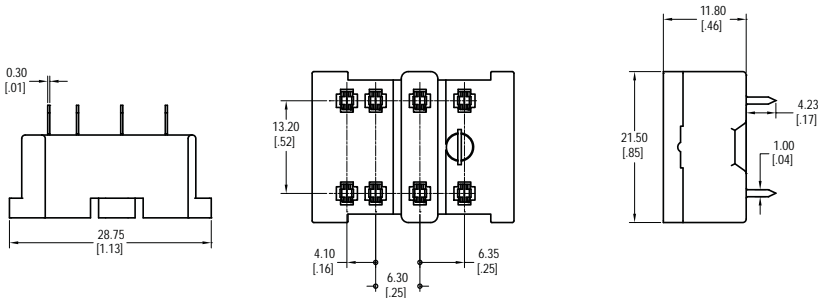
### PY08



### Panel Cut-Out



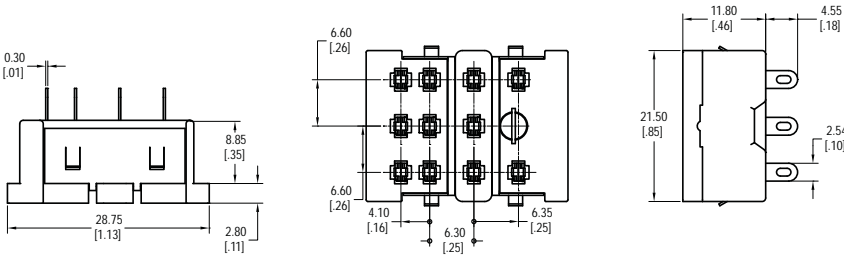
### PY08-02



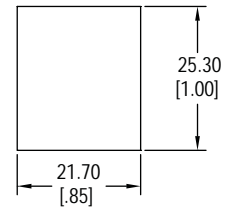
## Dimensions

Units = mm

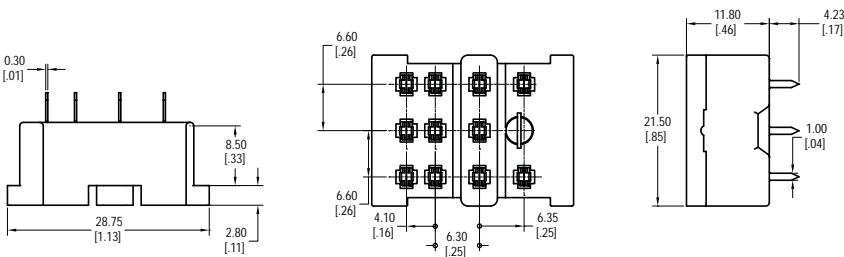
### PY11



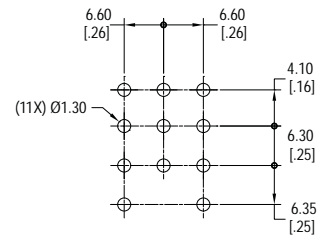
### Panel Cut-Out



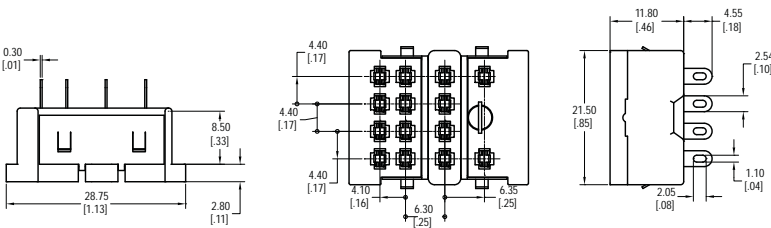
### PY11-02



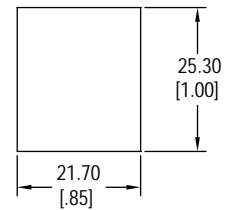
### PCB Layout



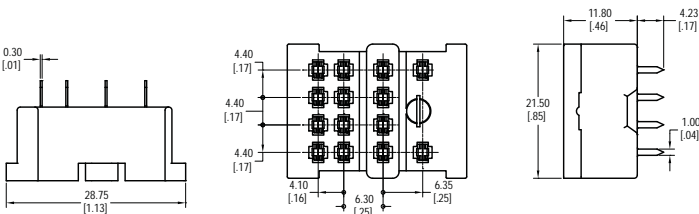
### PY14



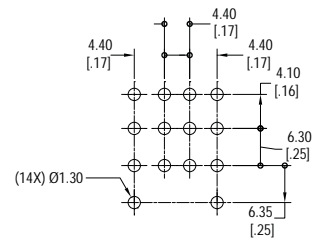
### Panel Cut-Out



### PY14-02



### PCB Layout

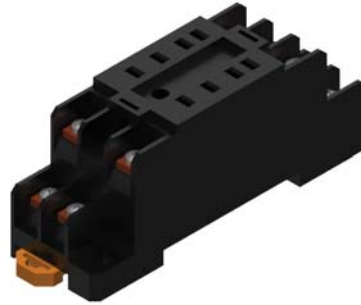
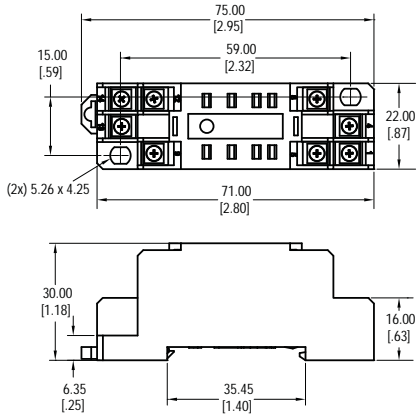


# Socket

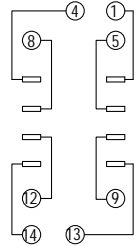
## Dimensions

Units = mm

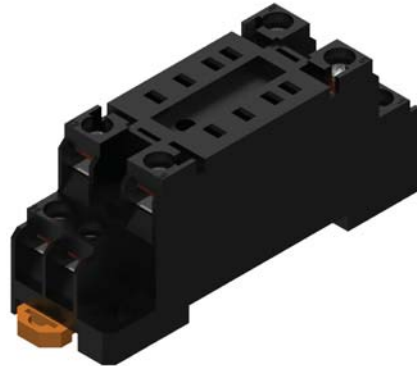
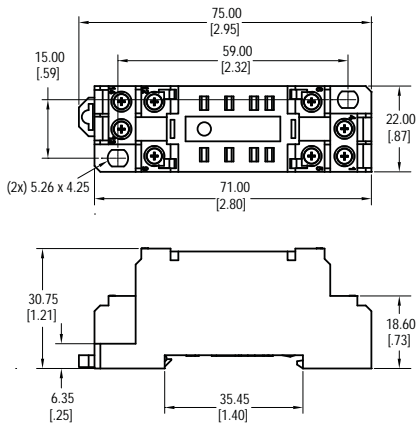
### PYF08A



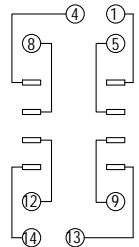
### Schematic



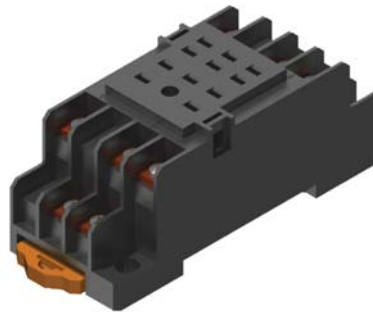
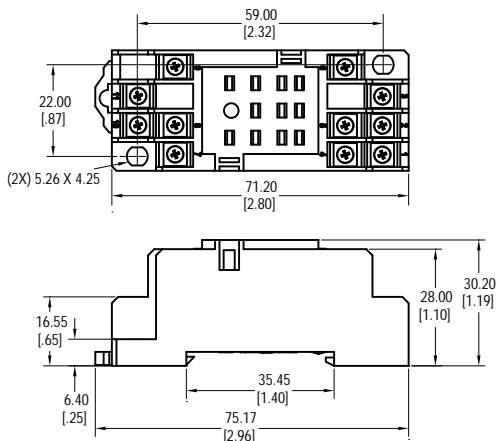
### PYF08A-E



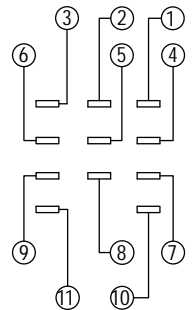
### Schematic



### PYF11A



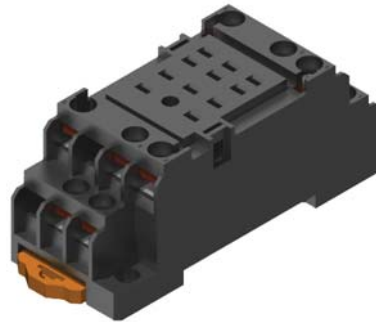
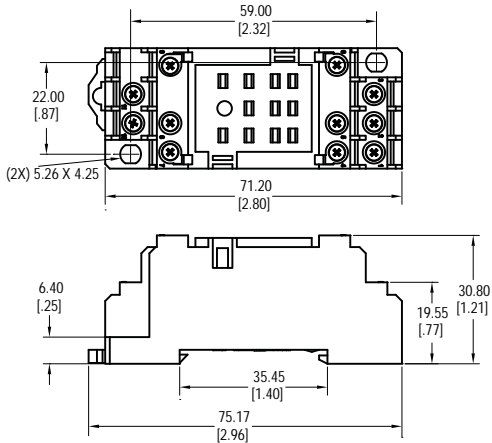
### Schematic



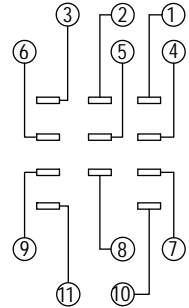
## Dimensions

Units = mm

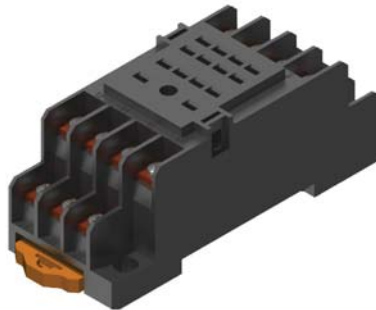
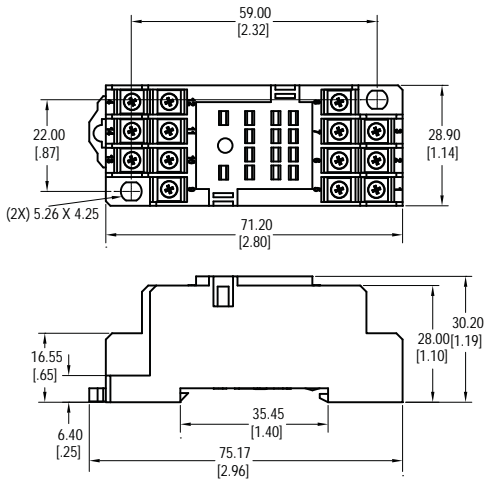
### PYF11A-E



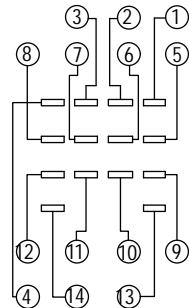
### Schematic



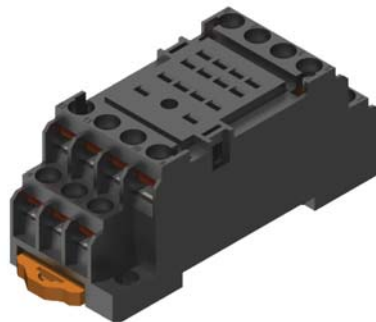
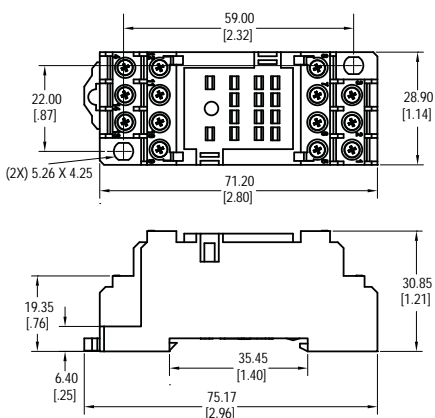
### PYF14A



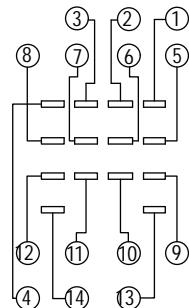
### Schematic



### PYF14A-E



### Schematic



## OUR CERTIFICATE

DiGi provide top-quality products and perfect service for customer worldwide through standardization, technological innovation and continuous improvement. DiGi through third-party certification, we stricly control the quality of products and services. Welcome your RFQ to

Email: [Info@DiGi-Electronics.com](mailto:Info@DiGi-Electronics.com)



Tel: +00 852-30501935

RFQ Email: [Info@DiGi-Electronics.com](mailto:Info@DiGi-Electronics.com)

DiGi is a global authorized distributor of electronic components.