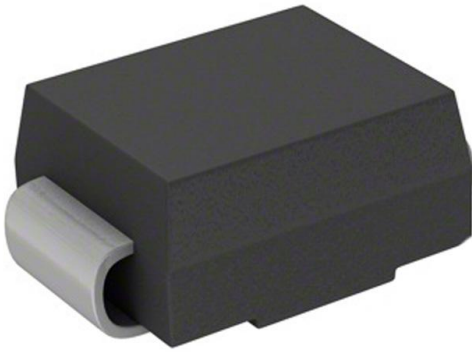


# CEFB204-G Datasheet

[www.digi-electronics.com](http://www.digi-electronics.com)



<https://www.DiGi-Electronics.com>

|                              |   |
|------------------------------|---|
| DiGi Electronics Part Number | CEFB204-G-DG                                |
| Manufacturer                 | <a href="#">Comchip Technology</a>          |
| Manufacturer Product Number  | CEFB204-G                                   |
| Description                  | DIODE GEN PURP 400V 2A DO214AA              |
| Detailed Description         | Diode 400 V 2A Surface Mount DO-214AA (SMB) |

This model CEFB204-G is available at DiGi Electronics.

DiGi Electronics offers a global database of semiconductor and electronic component datasheets.

We welcome your inquiries regarding pricing, lead time, or other product-related questions.

 [Request a Quote](#)

 [Datasheet Search](#)



Tel: +00 852-30501935

RFQ Email: [Info@DiGi-Electronics.com](mailto:Info@DiGi-Electronics.com)

DiGi is a global authorized distributor of electronic components.

## Purchase and inquiry

Manufacturer Product Number:

CEFB204-G

Series:

-

Technology:

Standard

Current - Average Rectified (Io):

2A

Speed:

Fast Recovery =< 500ns, > 200mA (Io)

Current - Reverse Leakage @ Vr:

5  $\mu$ A @ 400 V

Mounting Type:

Surface Mount

Supplier Device Package:

DO-214AA (SMB)

Base Product Number:

CEFB204

Manufacturer:

Comchip Technology

Product Status:

Obsolete

Voltage - DC Reverse (Vr) (Max):

400 V

Voltage - Forward (Vf) (Max) @ If:

1.1 V @ 2 A

Reverse Recovery Time (trr):

35 ns

Capacitance @ Vr, F:

-

Package / Case:

DO-214AA, SMB

Operating Temperature - Junction:

150°C (Max)

## Environmental & Export classification

Moisture Sensitivity Level (MSL):

1 (Unlimited)

ECCN:

EAR99

REACH Status:

REACH Unaffected

HTSUS:

8541.10.0080

## SMD Efficient Fast Recovery Rectifiers

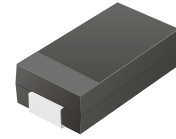


# CEFB201-G Thru. CEFB205-G

Reverse Voltage: 50 to 600 Volts

Forward Current: 2.0 Amp

RoHS Device

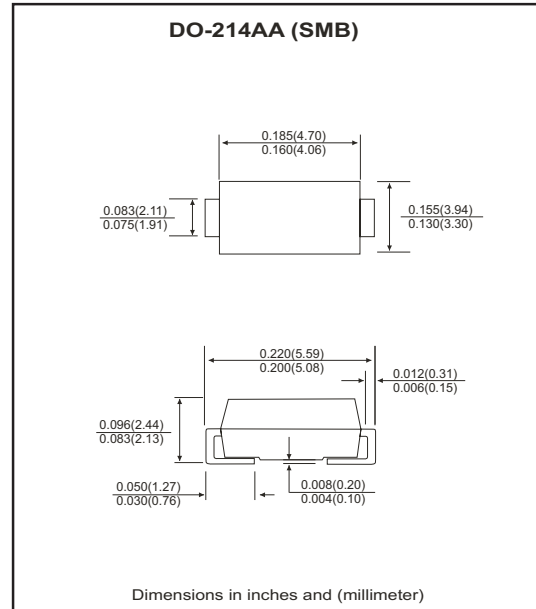


### Features

- Ideal for surface mount applications.
- Easy pick and place.
- Plastic package has Underwriters Lab. flammability classification 94V-0.
- Super fast recovery time for high efficient.
- Built-in strain relief.
- Low forward voltage drop.

### Mechanical data

- Case: JEDEC DO-214AA, molded plastic.
- Terminals: solderable per MIL-STD-750, method 2026.
- Polarity: Color band denotes cathode end.
- Approx. weight: 0.093 grams



### Maximum Ratings and Electrical Characteristics

| Parameter  | Symbol          | CEFB201-G   | CEFB202-G | CEFB203-G | CEFB204-G | CEFB205-G | Units          |
|--|-----------------|-------------|-----------|-----------|-----------|-----------|----------------|
| Max. repetitive peak reverse voltage   | $V_{RRM}$       | 50          | 100       | 200       | 400       | 600       | V              |
| Max. DC blocking voltage   | $V_{DC}$        | 50          | 100       | 200       | 400       | 600       | V              |
| Max. RMS voltage   | $V_{RMS}$       | 35          | 70        | 140       | 280       | 420       | V              |
| Peak surge forward current, 8.3ms single half sine-wave superimposed on rate load (JEDEC method) | $I_{FSM}$       | 35          |           |           | 45        |           | A              |
| Max. average forward current   | $I_o$           | 2.0         |           |           |           |           | A              |
| Max. instantaneous forward voltage at 2.0A   | $V_F$           | 0.875       |           |           | 1.1       | 1.25      | V              |
| Reverse recovery time  | $T_{rr}$        | 25          |           |           | 35        | 50        | nS             |
| Max. DC reverse current at<br>rated DC blocking voltage  | $I_R$           | 5.0<br>250  |           |           |           |           | $\mu$ A        |
| Max. thermal resistance (Note 1)   | $R_{\theta JL}$ | 15          |           |           |           |           | $^{\circ}$ C/W |
| Max. operating junction temperature  | $T_J$           | 150         |           |           |           |           | $^{\circ}$ C   |
| Storage temperature  | $T_{STG}$       | -55 to +150 |           |           |           |           | $^{\circ}$ C   |

Notes: 1. Thermal resistance from junction to lead mounted on P.C.B. with 8.0x8.0 mm copper<sup>2</sup> pad area.

# SMD Efficient Fast Recovery Rectifiers



## RATING AND CHARACTERISTIC CURVES (CEFB201-G thru CEFB205-G)

Fig.1 Reverse Characteristics

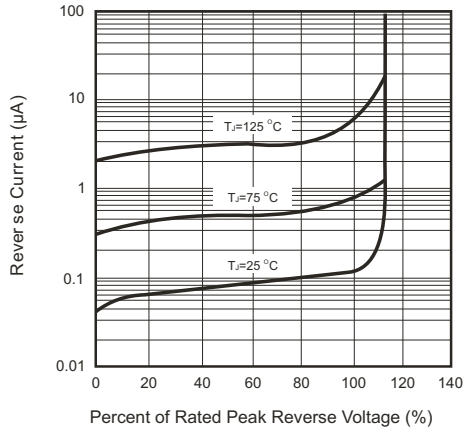


Fig.2 Forward Characteristics

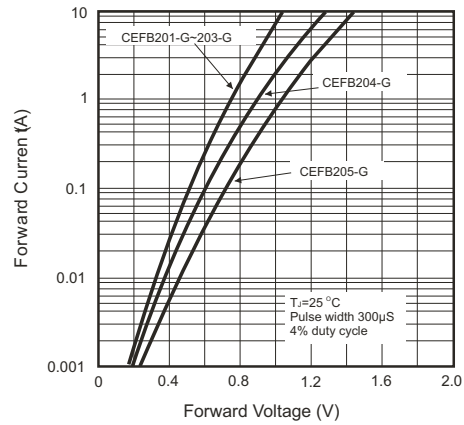


Fig.3 Junction Capacitance

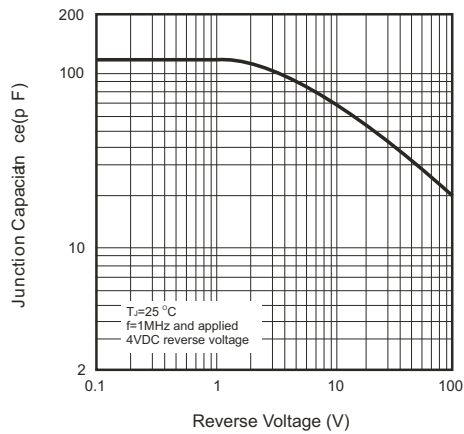


Fig.4 Non-repetitive Forward Surge Current

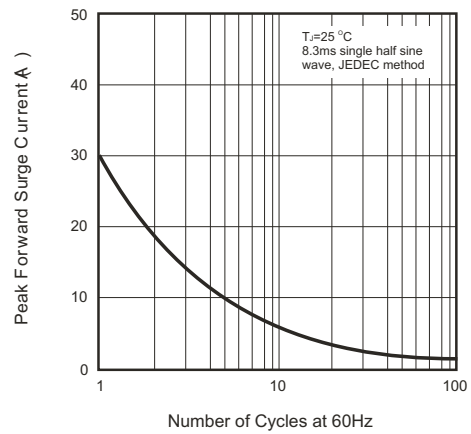


Fig.5 Test Circuit Diagram and Reverse Recovery Time Characteristics

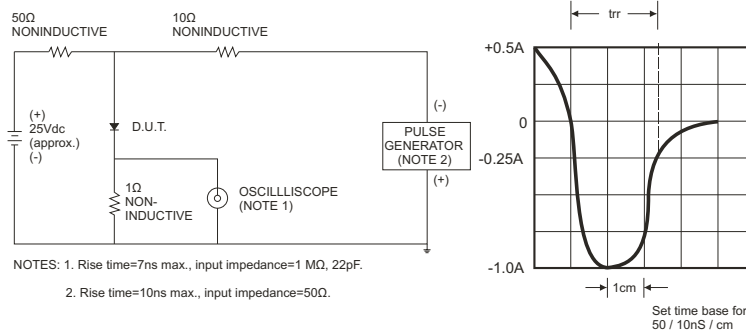
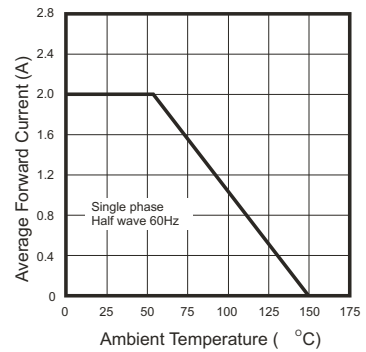


Fig.6 Current Derating Curve



## OUR CERTIFICATE

DiGi provide top-quality products and perfect service for customer worldwide through standardization, technological innovation and continuous improvement. DiGi through third-party certification, we stricly control the quality of products and services. Welcome your RFQ to

Email: [Info@DiGi-Electronics.com](mailto:Info@DiGi-Electronics.com)



Tel: +00 852-30501935

RFQ Email: [Info@DiGi-Electronics.com](mailto:Info@DiGi-Electronics.com)

DiGi is a global authorized distributor of electronic components.