



# AJ-MMCXP Datasheet

DiGi Electronics Part Number	APH-SMAJ-MMCXP-DG
Manufacturer	<a href="#">Amphenol RF</a>
Manufacturer Product Number	APH-SMAJ-MMCXP
Description	CONN ADAPT SMA JACK TO MMCX PLUG

<https://www.DiGi-Electronics.com>

**Detailed Description** Adapter Coaxial Connector SMA Jack, Female Socket To MMCX Plug, Male Pin 50 Ohms

DiGi Electronics offers a global database of semiconductor and electronic component datasheets.

We welcome your inquiries regarding pricing, lead time, or other product-related questions.

 [Request a Quote](#)

 [Datasheet Search](#)

RFQ Email: [Info@DiGi-Electronics.com](mailto:Info@DiGi-Electronics.com)

DiGi is a global authorized distributor of electronic components.

## Purchase and inquiry

Manufacturer Product Number:

APH-SMAJ-MMCXP

Series:

-

Adapter Type:

Plug to Jack

Adapter Series:

SMA to MMCX

Convert From (Adapter End):

SMA Jack, Female Socket

Impedance:

50 Ohms

Mounting Type:

Free Hanging (In-Line)

Fastening Type:

Snap-On, Threaded

Ingress Protection:

-

Features:

Manufacturer:

Amphenol RF

Product Status:

Obsolete

Conversion Type:

Between Series

Center Gender:

Female to Male

Convert To (Adapter End):

MMCX Plug, Male Pin

Style:

Straight

Mounting Feature:

-

Frequency - Max:

6 GHz

Center Contact Plating:

Gold

Includes:

# APH-SMAJ-MMCXP Amphenol RF CONN ADAPT SMA JACK TO MMCX PLUG

**NOTES:**

**1. MATERIALS AND FINISHES:**

BODY - BRASS (ASTM-B16 H02, C36000), GOLD PLATING  
 CONTACT PIN - BeCu, GOLD PLATING  
 INSULATOR - PTFE PER ASTM D 1710 OR EQUIV.  
 RETAINER RING - BeCu, GOLD PLATING

**2. ELECTRICAL:**

A. IMPEDANCE: 50 OHM  
 B. FREQUENCY RANGE: DC - 6 GHz

**3. MECHANICAL:**

A. TEMPERATURE RANGE: -65° C TO +165° C

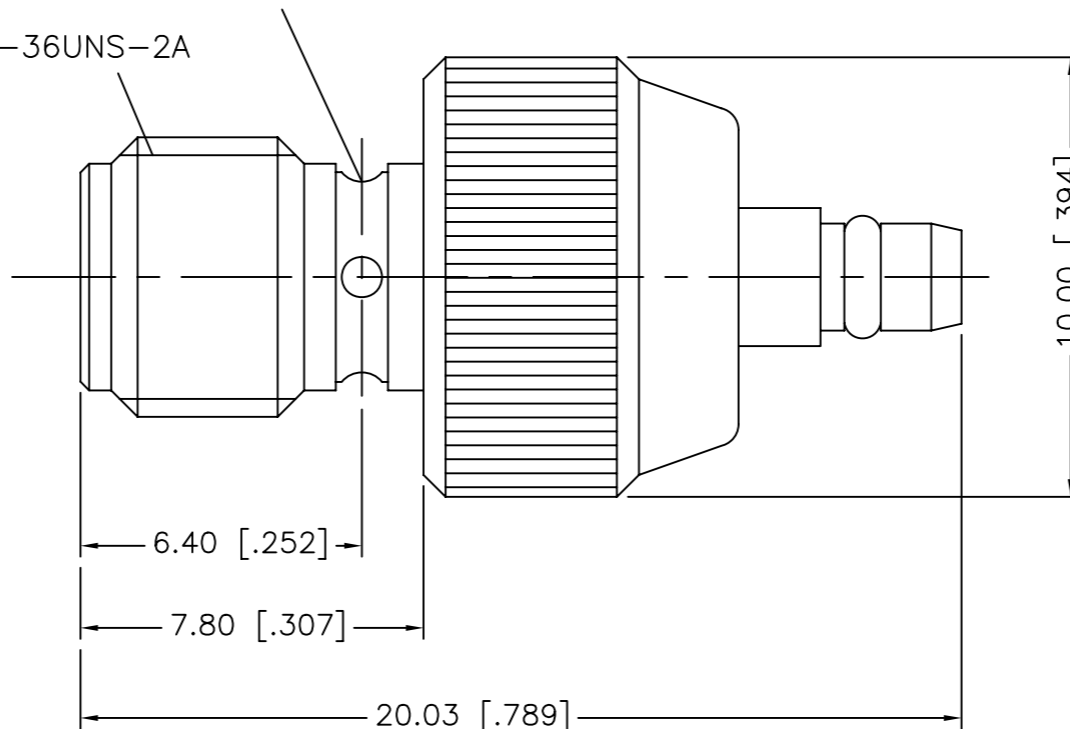
**4. PACKAGING:**

A. QUANTITY: SINGLE PACK  
 B. MARKING: BAG TO BE MARKED  
 "AMPHENOL, APH-SMAJ-MMCXP, AND DATE CODE

APH-SMAJ-MMCXP		REVISIONS			
DRAWING NO.	REV	DESCRIPTION	DATE	ECO	APPR
THIRD ANGLE PROJ.	A	RELEASE TO MFG.	9/12/06	46261	CPM/

STAKE IN 4 PLACES  
 EQUALLY SPACED 90° APART

1/4-36UNS-2A



UNLESS OTHERWISE SPECIFIED, DIMENSIONS ARE IN INCHES AND TOLERANCES ARE:  
 2 PLACE DECIMAL ±.015 (0,381 mm)    3 PLACE DECIMAL ±.005 (0,127 mm)    ANGLES ± 1°

NOTICE - These drawings, specifications, or other data (1) are, and remain the property of Amphenol Corp. (2) must be returned upon request; and (3) are confidential and not to be disclosed to any person other than those to whom they are given by Amphenol Corp. The furnishing of these drawings, specifications, or other data by Amphenol Corp., or to any other person to anyone for any purpose is not to be regarded by implication or otherwise in any manner licensing, granting rights or permitting such holder or any other person to manufacture, use or sell any product, process or design, patented or otherwise, that may in any way be related to or disclosed by said drawings, specifications, or other data.

MATERIAL	DRAWN	DATE
	C. McGRATH	4/27/05
REFERENCE	ENGINEER	DATE
	O. BARTHELMES	4/27/05
	APPROVED	DATE
	O. BARTHELMES	9/8/06
CAD FILE		H:\DEPT611\ASSY\APH\SMAJ-MMCXP

<h2 style="margin: 0;">SMA JACK TO MMCX PLUG ADAPTER</h2>	<p>Amphenol Amphenol Corporation RF/Microwave Operations Danbury, Conn. U.S.A. 06810</p>
CODE ID 74868	DWG SIZE B
DRAWING NO. APH-SMAJ-MMCXP	

SCALE: 2:1 SHEET OF
ISSUE A

